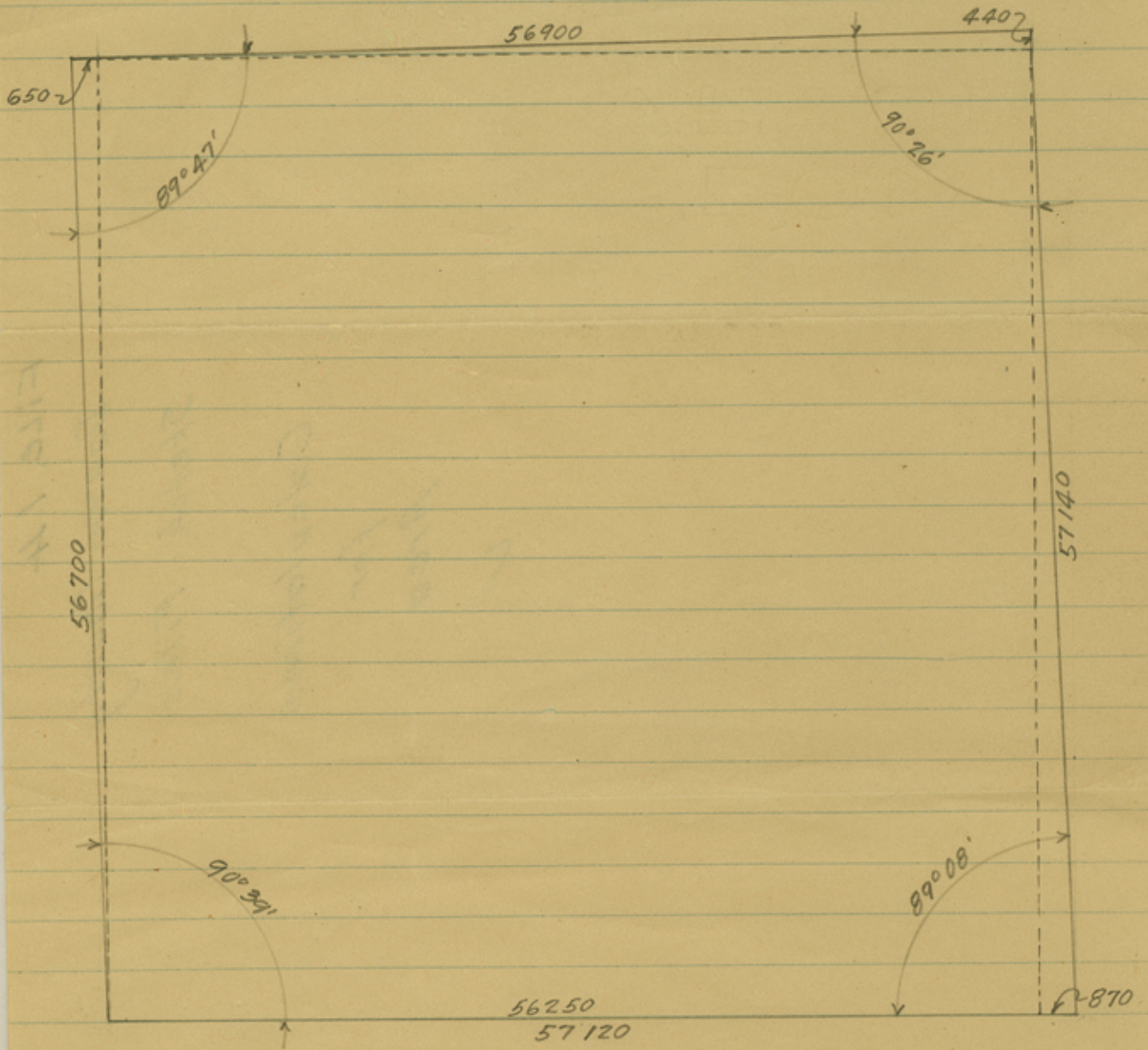


Dawson County



$$56250 \times 56700 = 3\,189\,375\,000$$

$$56700 \times 325 = 18\,427\,500$$

$$56900 \times 220 = 12\,518\,000$$

$$57140 \times 435 = 24\,855\,900$$

$$3,245,176,400 \text{ sq. ft.}$$

$$574,835.51 \text{ Acres}$$

$$898.18 \text{ sq. mi.}$$

File, 14

Dawson County

Sketch Files

Calculations

for
Area

✓