

I N. O. Twichell, having been appointed by the Surveyor of the Oldham Land District to survey certain portions of Deaf Smith County, do hereby certify that I found and identified on the ground, the N. E. Corner of section #27 Block #8 Beaty Seal & Porwood - the same being a circular trench -

That I found and identified the N. E. Corner of section #4 in Block #7 by virtue of Beaty, Seal & Porwood, the same being a circular trench 12 feet diameter

Also that I found and identified the N. E. corner section 12 in Block 3 Adams, Beaty & Moulton - all in Deaf Smith County -

That I have measured the line between these three monuments and find that a variation of $11^{\circ}53'$ East is necessary to retrace this line -

From the N. E. Corner of section #4 Block #7 to N. E. Corner of 27 Blk 8 the distance is excessive about 30 varas per mile -

That from N. E. corner section #4 Blk 7 to N. E. corner #12 Blk #3 the distance is excessive about 15 varas per mile

From these three corners above described I have established the W boundary of blocks #3 Adams, Beaty & Moulton - as well as the boundary of block #14 with a variation of $11^{\circ}53'$ E.

That Block #7 has only one established

Corner, which is the N.E. Corner of section
 135 said block - the same being a
 large circular trench easily identified
 From this corner I have established
 the boundary of said block M7 - by
 giving each section course and distance
 That a stone set in ground the North
 West corner section # 12 - in Block K14
 is 7604 Varas North and 600 East of the
 North East corner section no 44 Block
 M7 -

That I establish the East boundary
 line of block K3 on a variation
 of $11^{\circ} 20' E$

I N. S. Mabry do hereby certify
 that I have approved and
 adopted the work of W. K. Twichell
 in Deaf Smith County & have
 carefully examined the above
 certificate & hereby approve the
 same

Witness my hand at Pecos
 Jan'y 5th 1885 -

N. S. Mabry
 Surveyor, Deaf Smith County
 Texas

Deaf Smith Co.

Sketch file

No. 1.
 Filed June 9/88.

See sketch No 1 1/2 also one
 in Box on S. 21876.

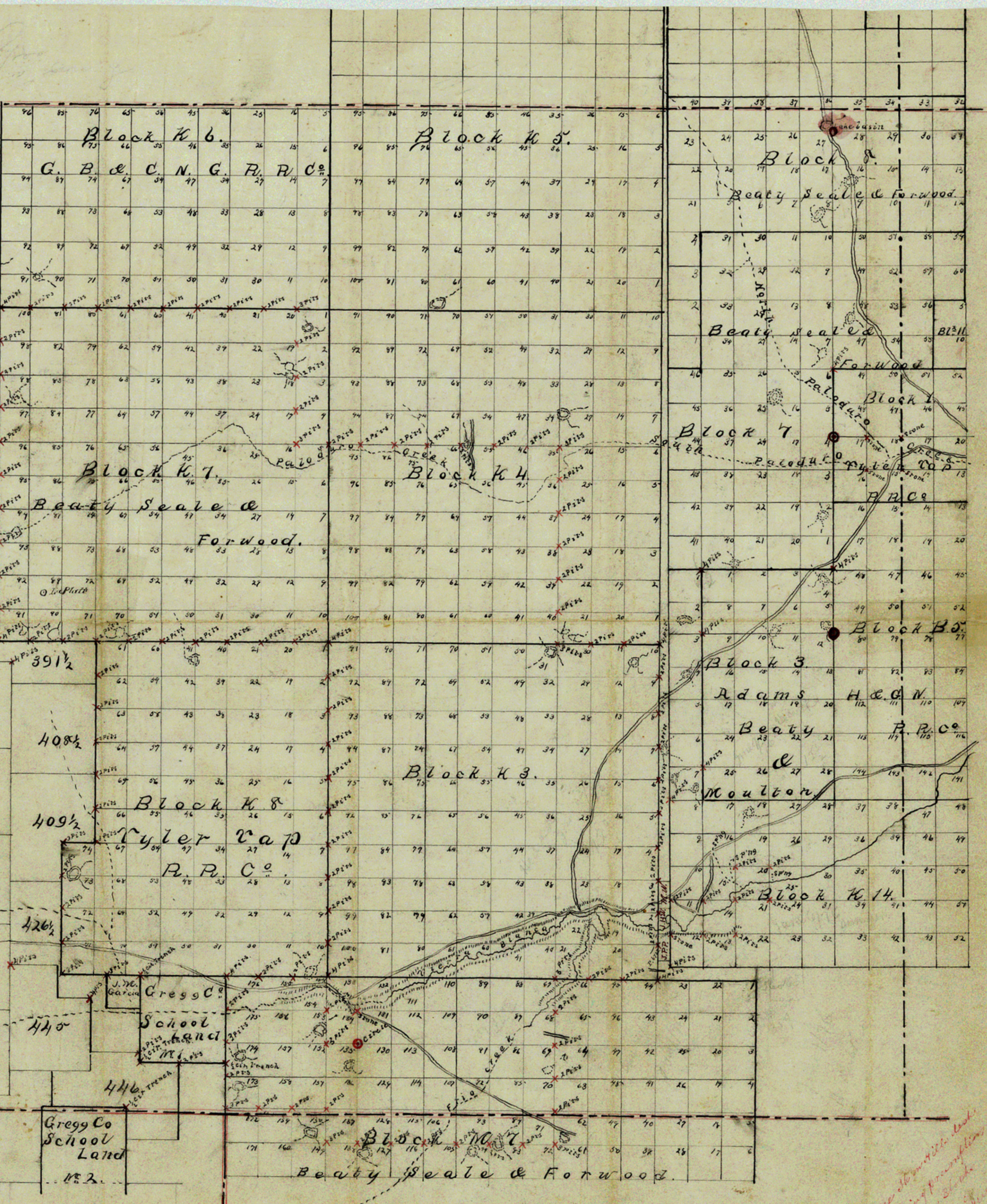
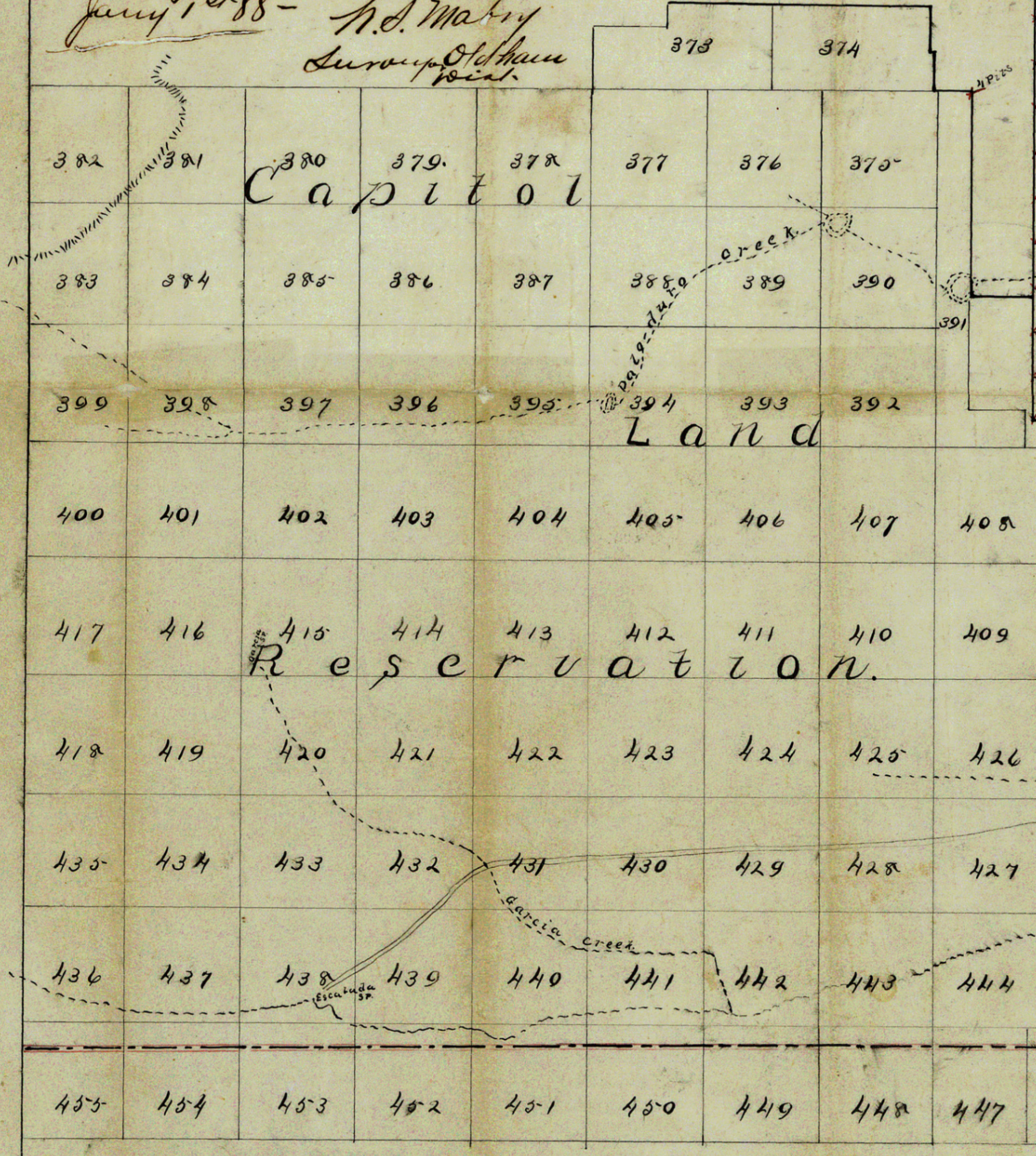
See Mabry letter
 dated June 1/1902
 marked file / A Sec 8 mile 60.
 E. S. Rosenberg

See carbon copy in
 S.F. 8429 & 8388
 P. J. King

See letter Book Vol 683
 p. 52
 " " " 688
 " " " p. 427
 " " " 702
 " " " p. 513
 " " " 703
 " " " p. 107
 " " " 1072
 " " " p. 486

DEAF SMITH.

Mr. J. Mabry Surveyor Adham Rural District
 do hereby certify that the foregoing map
 correctly shows the true position of the
 surveys in Deaf Smith County
 Jan'y 1st 88 - J. A. Mabry
 Surveyor Adham Rural District



See also map of this land
 showing its position
 in Deaf Smith County
 Jan'y 1st 88