

File Z.

Dated 3-2-03.

Filed. 3-10-03.

Twichell's SK & Report on  
BIK's K6 & K11.

WM. H. McDONALD

COMMISSIONER

GENERAL LAND OFFICE

AUSTIN, TEXAS



Counter 20651

785  
W. D. TWICHELL.  
SURVEYOR.

*Texas Land Boundaries a Specialty.*

AMARILLO, TEXAS, ~~Feby.~~ <sup>MARCH.</sup> 7" 1903.

Hon. John J. Terrell,  
Austin, Texas.

Dear Sir:-

Complying with your instructions dated Feby. 9" 1902, I have gone upon the ground and marked the positions of blocks K 11 and K 6 Deaf Smith and Oldham counties, and I herewith hand you "sketch Z" which fully represents the positions of the surveys as found upon the ground and which I have made as part of this report. The lines indicated with red were actually surveyed by me upon the ground. I have indicated with letters and figures ("H' 2", "E' 7" etc.) on sketch Z, the positions of the marks and corners, marked or identified by me and I herewith attach a list giving a full description of such marks and corners, as a part of this report.

For your convenience I have connected with the N.E. corner of Capitol League 375 and have indicated the measurement between capitol league corners from the N.E. of league 375 to the N.W. of league 357 as made by me in Sept. 1886, while locating fence lines. At that time I determined my courses with the magnetic needle and my measurement was done with too much haste, for great precision, yet it will be found practically correct. Magnetic courses are misleading in this vicinity, hence the conflict between leagues 357 and 357 1/2 will probably be 150 to 200 vrs. greater than is indicated.

Yours respectfully,

W. D. Twichell State Surveyor.

W. D. TWICHELL,

SURVEYOR.

Texas Land Boundaries a Specialty.

AMARILLO, TEXAS.

March 6<sup>th</sup> 1903.

Descriptions of marks and corners, upon the ground as determined by W.D. Twichell, State Surveyor, under instructions dated- 11-24-1902. and 2-9-1903. to determine the boundaries of Block K 6 and Block K 11 in Deaf Smith and Oldham Counties, as indicated on sketch Z.

C 9:-Stone 5"x6"x7" marked X and four pits, whence a lake basin bears N.W. abt 150 Vrs., and two pits ( recent) bears E. 3 vrs. and S. 19 vrs.

C 10:-Stone 5"x8"x12" marked X and four pits, whence four pits ( recent) bears S. 10° 45' W. 33.2 vrs., and W.M. William's wind mill brs. S. 43° 15' E., J.A. McIntosh's wind mill brs. S. 83° E., Baker's wind mill brs. N. 1° E.

C 11:-Sucker rod and four pits.

C 12:-Two pits and boisdarc post in fence.

E' :- Set stone 12"x12"x6" in <sup>old</sup> semicircular trench sodded, 2 1/2' wide and 12' long, post in mt. at angle of fence.

E' 1:-Set stone 12"x12"x3" in center of old pit <sup>mound</sup> 1'x1 1/2' rectangular and sodded.

E' 2:-Set stone " " " " in mound, pit similar to E'1,

D 9:-Brick marked X and two pits.

D 10:-Stone 12"x5"x4" and two pits.

E :- Brick and two pits.

E 1:- " " " "

E 2:- Stone 14"x12"x4" marked X ( stone is triangular)

E 3:- Brick and two pits.

E 4:- " " " "

E 5:- Stone 12"x8"x4" marked X

E 6:- Brick and two pits.

E 7:- Brick and stone 4"x7"x10" and two pits,

E 8:- Stone 8"x7"x2" and two pits.

E 9:- Four large pits

F' :- Stone 14"x12"x6" mkd. X.

F' 1:- Set stone 14"x8"x4" mkd. X, fence brs. S. 1.2 vrs., whence Weaver's wind mill brs. N. 76° 39' 50" E., East L S mill brs. N. 65° 20' 10" E., West LS mill brs. N. 39° 03' 00" E., Glasscock's mill brs. S. 84° 48' 10" W.

F' 2:- Stone 8"x8"x3" mkd. X.

F' 3:- Stone 8"x10"x12" whence a fence brs. W. abt. 225 vrs., L.S. mill brs. N. 79 13' 30" E., L.S. West mill brs. N. 75 00' 00" E., G

Texas Land Boundaries a Specialty.

AMARILLO, TEXAS,

F' 4 :- Stone 6"x6"x4" marked X and two pits.

F' 5 :- " 4"x8"x10" and two pits.

H' 2 :- Brick marked X and two pits.

H' 3 :- Brick marked X and two pits.

H' 4 :- " " X " " "

H' 5 :- " " X " " "

H' 6 :- " " X " " "

H' 7 :- " " X " " "

H' 8 :- " " X " " "

H' 9 :- " " X " " "

H' 10 :- " " X " " "

H' 11 :- " " X " " "

J' :- " " X " four "

J' 1 :- " " X " " " whence grapevine pt. brs. S. 79° 13' 50" W.,

Neely and Curtis' mill brs. S. 14° 40' 00" E., and gate posts brs. N. 84° 30' 00" and 84° 9' 30" E. at 600 vrs.

✓ J' 2 :- ~~small pits xxxxx peg, whence log in fence xxxxx vrs.~~ *a brick & 4 pits*  
A brick and four pits.

J' 3 :- Plain mound and semicircular trench 12' in diameter but slightly dis-  
figured with trails, trench 3' wide, set brick marked X in mound, *the orig NW 13K11*

J' 4 :- Peg and pile of dirt. brs. N. 13 1/2 vrs.

J' 5 :- " " " " " " N. 27 vrs.

J' 6 :- Set brick marked X in mound, two good pits under fence brs. N. 40.5 vrs

J' 8 :- Brick and two pits brs. N 67 1/2 vrs.

J' 9 :- Pile of stone in rincone, not marked, brs. N. 81 vrs.

J' 11 :- Old and very large rock monument marked X on solid rock bluff, the  
original N.W. corner of survey no. 103 block K 11, whence the E. edge of  
bluff brs. S. 15 vrs. and do. brs. E. 15 vrs.

K' :- Brick and four pits, whence four small pits brs. S.E. 27 vrs.

K' 1 :- Stone 12"x10"x2" marked X and a pile of stone bedded on sandy East slope  
to draw, draw brs. E. 30 vrs., and fork of draw brs. N.E.E. 100 vrs.

K' 2 :- Brick and three pits, whence a recent md. and four pits brs. N. 47 & E  
2 vrs.

K' 3 :- Brick and two pits, whence recent four pits brs. S. 18 and W. 7 vrs.

## AMARILLO, TEXAS.

- K' 4 :- Brick and two pits
- K' 5 :- Brick and three pits
- K' 6 :- " " two pits.
- K' 7 :- " " Three "
- K' 8 :- " " two "
- K' 9 :- " " three pits
- K' 10 :- " " two "
- K' 11 :- A 6' semicircular trench and bottle
- L' :- Brick and three pits.
- L' 1 :- Brick and two pits
- L' 2 :- An iron spindle and two pits.
- L' 3 :- 4 1/2 inch casing, whence the S.W. corner of survey no. 98 Bl'k K 6  
brs. S. 92 vrs.
- L' 4 :- Jug and three pits.
- L' 5 :- A cedar peg and a semicircle.
- L' 6 :- Iron spindle and two pits.
- L' <sup>8</sup> :- Stone in ground marked 26, the 26" mi. stone on County line.
- L' <sup>7</sup> :- X ~~XXXXX~~ An iron thimble and three pits.
- L' 9 :- Stone 12"x10"x3" mkd. X and two pits.
- L' 10 :- Stake and semicircle, whence the S.W. edge of large lake brs.S.W. 90 vrs
- L' 11 :- Cedar stake and two pits, whence the S.W. edge of lake brs. N. 100 vrs.
- L' 12 :- A galon can and three pits.
- L' 13 :- Stone marked X and <sup>two</sup> ~~three~~ pits
- L' 14 :- Stone in the N. end of 6' semicircular trench in dog hole.
- L' 15 :- Brick and two pits.
- M' :- " set in pit 4'x2', whence a pit brs. 3 vrs. W. and do. 3 vrs. E.
- M' 1 :- " and two pits whence West twin mills brs. ~~about~~ 103 vrs. S. and  
about 20<sup>0</sup> vrs. E.
- M' 2 :- Stone 8"x10"x3" not marked, whence the center of four pits bear ~~X.X.~~  
W. 3 1/2 vrs.

W. D. TWICHELL.

SURVEYOR.

Texas Land Boundaries a Specialty.

AMARILLO, TEXAS.

- M' 3: Brick and two pits, whence a pit brs. W 5 vrs.
- M' 4: A bottle and two pits, whence a post brs. W 50 and N. 10 vrs.
- M' 5: A peruna bottle and two pits.
- M' 6: Stone and two pits.
- M' 7: A 2inch casing and two pits.
- N' 1: Brick and two pits.
- N' 1: Brick and three pits.
- N' 2: Circle 4 vrs. in diameter, rock marked X in center
- N' 3: Brick and three pits.
- N' 4: Point, whence a mound and four pits bear N. 5 1/2 vrs. and a brick marked X bears N. 8 1/2 vrs.
- N' 5: Brick and three pits.
- N' 6: Brick and two pits.
- N' 7: " " " "
- N' 8: Two pits and a little brown jug.

W. D. Twichell State Surveyor.

*Handwritten notes:*  
 N' 1: Brick and three pits.  
 N' 2: Circle 4 vrs. in diameter, rock marked X in center  
 N' 3: Brick and three pits.  
 N' 4: Point, whence a mound and four pits bear N. 5 1/2 vrs. and a brick marked X bears N. 8 1/2 vrs.  
 N' 5: Brick and three pits.  
 N' 6: Brick and two pits.  
 N' 7: " " " "  
 N' 8: Two pits and a little brown jug.

W. D. TWICHELL

SURVEYOR

Extra Land Boundaries & Specifications

AMARILLO, TEXAS

- N. 1. A rick and two pits.
- N. 2. A rick and two pits.
- N. 3. A rick and two pits.
- N. 4. A bottle and two pits, whence a post prs. W 20 and N. 10 vrs.
- N. 5. A bottle and two pits.
- N. 6. Stone and two pits.
- N. 7. A rick and two pits.
- N. 8. A rick and two pits.
- N. 9. A rick and two pits.
- N. 10. A rick and two pits.
- N. 11. A rick and two pits.
- N. 12. A rick and two pits.
- N. 13. A rick and two pits.
- N. 14. A rick and two pits.
- N. 15. A rick and two pits.
- N. 16. A rick and two pits.
- N. 17. A rick and two pits.
- N. 18. A rick and two pits.
- N. 19. A rick and two pits.
- N. 20. A rick and two pits.

"Z"  
 Sketch  
 Deaf Smith County  
 Sketch files  
 On line of Oldham Co.

State Surveyor W. D. Twichell  
 report accompanying sketch  
 Z

Filed March 10<sup>th</sup> 1903  
 John J. Terrell  
 Comr.  
 by E. von Rosenberg  
 Recording Officer

683	-	688	703
52		424628	107
709			
498			

See Letter books vol. 683 | 688  
 for instructions. p. 52 | 424628  
 Rosenberg

State Surveyor

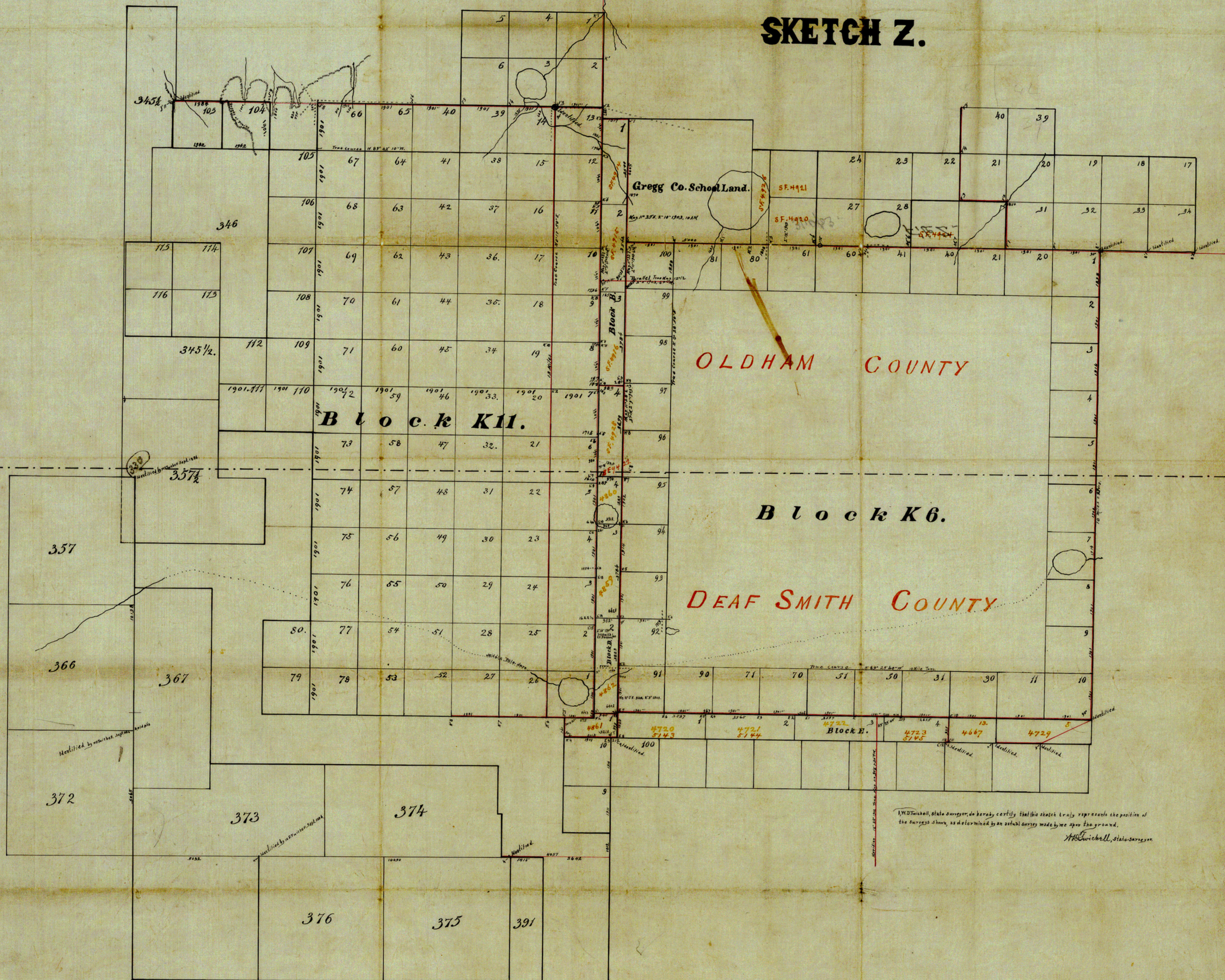
DEAF SMITH CO. SK. FILE #Z

2006-11-10 Counter 20657

Oldham County

N  
Sketch Z

SKETCH Z.



OLDHAM COUNTY

Block K6.

DEAF SMITH COUNTY

I, W. D. Tackell, state surveyor, do hereby certify that this sketch truly represents the position of the surveys shown, as determined by an actual survey made by me upon the ground.  
W. D. Tackell, State Surveyor

See sketch in SF 4914, 4939 & 4931 & sketch C.

Deaf Smith County

See field note of connecting lines & explanation filed with this  
E. W. Rosebury  
Draftsman

Filed March 10<sup>th</sup> 1903.  
John J. Ferrell  
Commissioner