

21  
- File ~~19~~ -

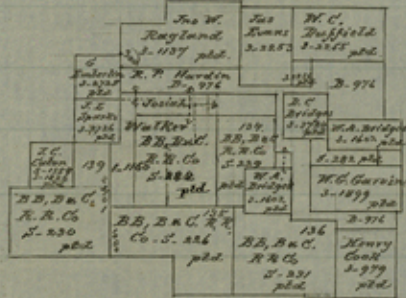
WM. H. McDONALD  
COMMISSIONER  
GENERAL LAND OFFICE  
AUSTIN, TEXAS

26.

off SK.

SEpart - 3 sketches.  
Denton co

Counter 20740

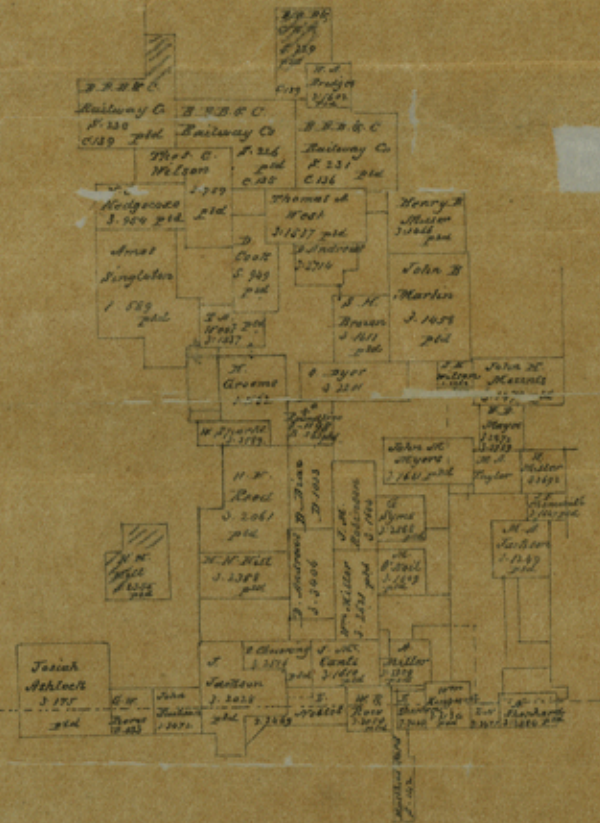


Plotted in Office

February 20/66

C. W. Profiler.

A. S. Williamson 2  
Nantzeny Co



~~19~~ 21 26

File 32. IIII

---

Placed in office

2/10/1

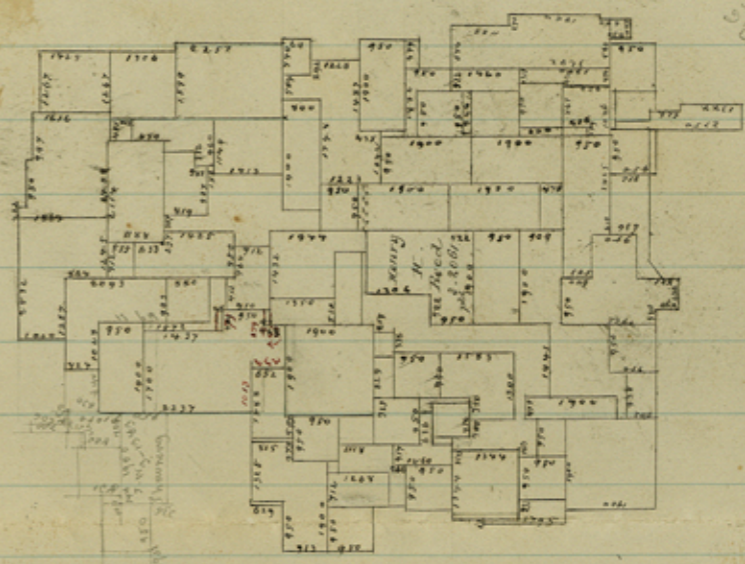
Counter 20743

~~14~~ 21 E. 27. 20.

Denton County.

Plotted in office. Aug. 19/20.  
E. Schutze.

S. E. corner.



48  
1.00  
KITCHEN

256  
1.00

1.00  
1.00  
1.00

1.00  
1.00

1.00  
1.00

256  
1.00