

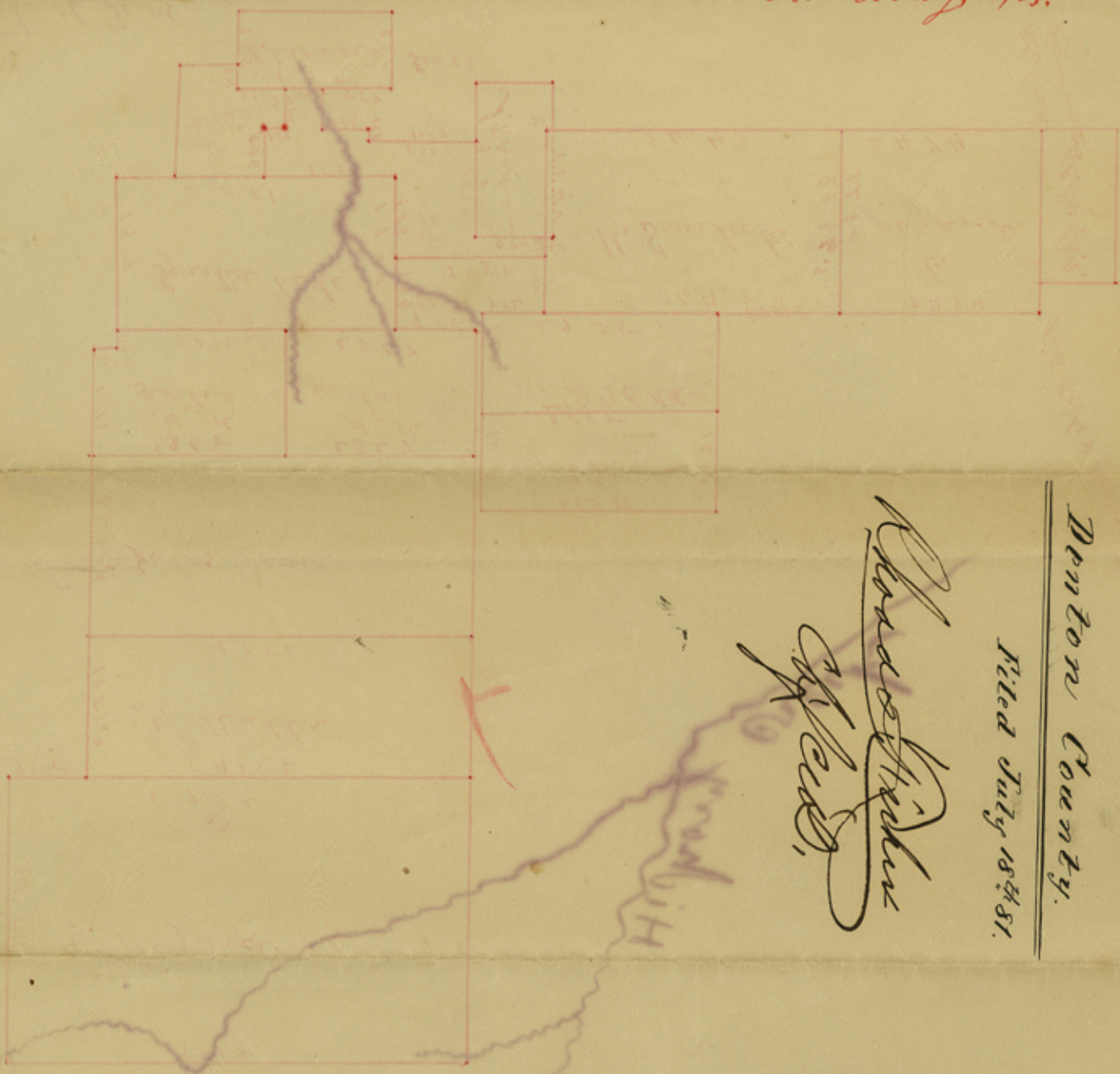


State of Texas  
 Denton County & Elijah Biggerstaff Surveyor of Denton County do hereby  
 certify that the above plat of surveys is a true representation  
 of the surveys as they are actually located on the ground, sec. No 92  
 M. & P. R. Co. survey is not found on the ground as its field notes represent  
 I have carefully measured the E. Pizana; S. Rudder, J. Davis & Feltus surveys &  
 also the Ignacia Elde survey & find them as represented on map, I then  
 located the J. C. Anderson from the Feltus & Elde surveys; I then went to the  
 S. E. corner of the E. Pizana 1000 acre survey & S. W. corner of B. B. R. Co. survey and  
 measured West the distance for Pizana & Scurlock surveys and find that the Scurlock  
 and Anderson surveys lap 80 varas instead of being 400 varas between them  
 as the field notes of said section No 92 represent, & I further find that the  
 Scurlock intersects the J. C. Anderson survey 1340 varas S of its N. E. corner  
 instead of 1026 varas as field notes of sec 92 call for; I next surveyed the Eli  
 Droward survey & find its corners well defined on the ground; I then measured  
 from the N. E. corner of E. Droward West 857 varas & North 495 varas & E 559 varas  
 and North 128 varas as called for in field notes of sec No 93 M. & P. R. Co.  
 survey thence East to the West B. line of said Anderson survey & find  
 the distance to be 1337 varas instead of 988 as notes call for; I next  
 measured the Ed Williams survey which has a noted Double Elm for a  
 bearing tree to one of its E. l. corners & find the distance from the N. W.  
 corner of Droward to S. E. corner of Ed Williams to measure 538 varas  
 instead of 628 varas, then N 482 varas instead of 495 varas, then  
 West 237 varas to corner with Double Elm found correct, thence North  
 596 varas to Elde line instead of 686 varas as notes call for, this line  
 intersects the the Elde line 1590 varas West of his S. E. corner instead of  
 1224 as notes of sec No 92 call for; and the North B. line of sec No 93  
 intersects the West B. line of J. C. Anderson at 1198 varas South of its  
 corner

North East corner instead of 1026 vars as notes of sec 92 call for, this will leave more land West of the J. E. Anderson survey than the field notes of either sec 92 or 93 call for, the M. Scinlock cuts off all the East part of Sec No 91, the B. B. B. & C. K. K. survey & John McGowan Survey are located by the Scinlock survey consequently close to within 38 vars of the A. M. Feltus & Fidas Davis surveys, the Carnal Manchaca survey laps on the Davis Kudder & Jizana surveys over 600 yards, the 2 B. B. B. & C. surveys East of the E. Jizana & Sarah Winfrey surveys lap over half their width on the Jizana & S. Winfrey surveys, this lap makes room of 508 vars at the N. E. corner of Sarah Winfrey survey for the International & Great Northern survey of 171 acres,

The E. Jizana survey is well located on the ground by natural objects called for in its field notes, the branches laid down on my map and called for in the notes of the Jizana are strictly correct on the ground as represented in my map attached, but the connections call for in the McGowan survey are all wrong to locate the McGowan from the Crawford as McGowan notes call for, it would move the McGowan West over 500 yards, this mistake in the location of the McGowan survey is the cause of all this trouble and the cause of the litigation between the E. Jizana & B. B. B. & C. survey on East of Jizana, these conflicts have long since been known to the citizens of this section of country, but so far as I know have never been shown to the General Land office

Elijah Biggerstaff, surveyor of  
Denton County, Texas.



Charles W. Hinkle  
J. P. [unclear]

Filed July 18th 81.

Denton County.

#28  
File: ~~88~~ 50