

File: 2.

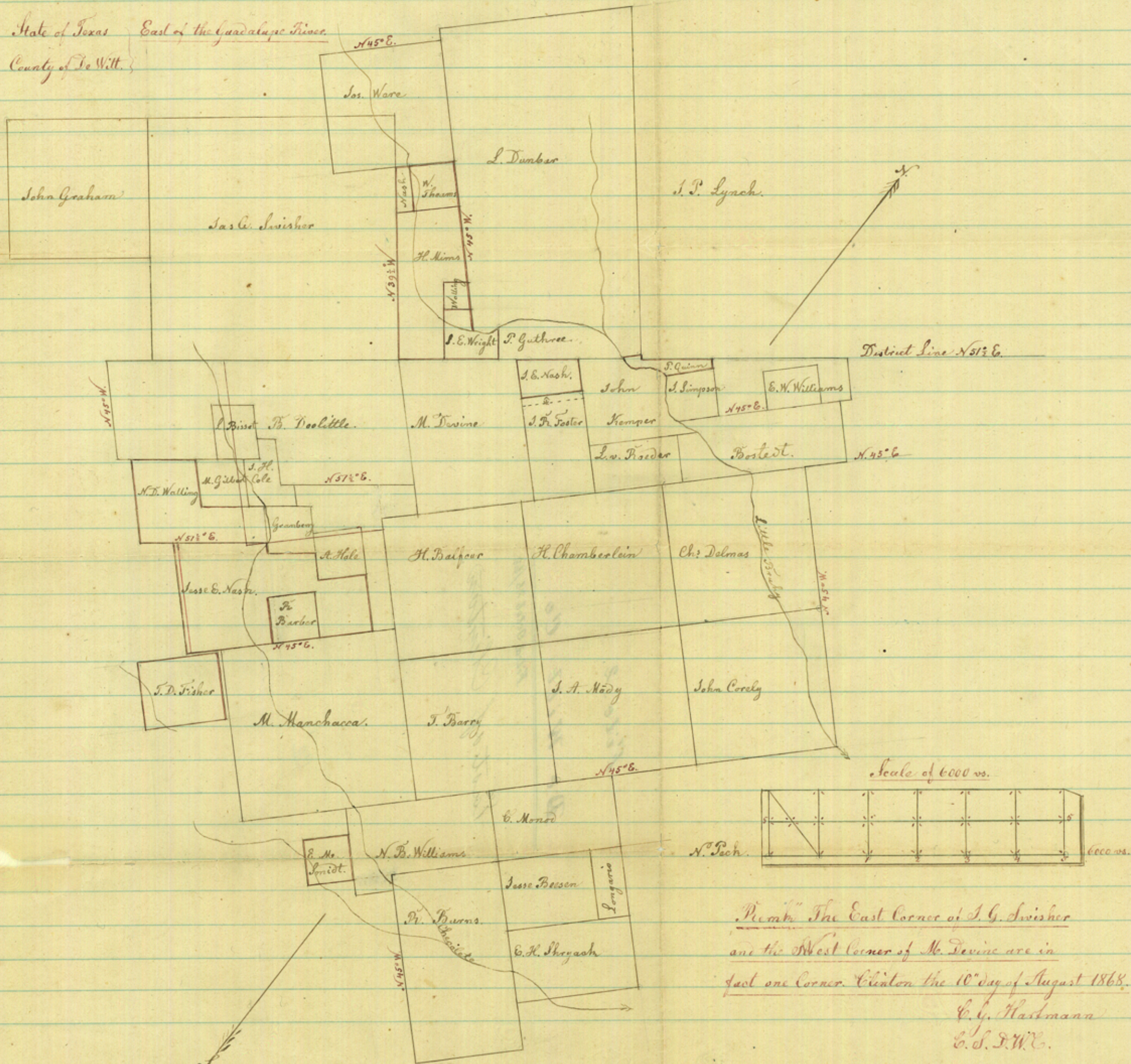
De Witt Co.

Filed Octob. 26/68.

East of Clinton.

Cl'

State of Texas East of the Guadalupe River
 County of De Witt.



Remark The East Corner of S. G. Swisher
 and the West Corner of M. Devine are in
 fact one corner. Clinton the 10th day of August 1868.
 C. G. Hartmann
 C. S. D. W. C.