



O K. FLOWERS
County Surveyor,

2494

STATE OF TEXAS

COUNTY OF

DICKENS

SF. 2 260
" 2261
" 2270
" 2272
" 2273
" 726

Dickens, Texas. July 13 1901

I Minor Wilson, Deputy Surveyor of Dickens B.T. do hereby certify that in addition to the lines of the J.M. Davidson, C.A. Darrell, J.M. Boyles and Geo T. Parker Surveys shown & on the attached plat. I have made the actual surveys upon the ground as indicated by red line on the plat.

In making the Survey from N.E. cor of No 61 B.T.B. in Cottle Co. We followed section lines as much as possible as shown by red line and found stone mds as indicated at the first two miles, And at the S.W. cor of No 1

A.G.M. I ran north one mile - found cor. No bearings but found Chittum Post in fence. [As this is so scarce in the country it is likely that the post was cut out of the witness tree] Thence west as indicated by red line Thence South to complete the five miles Thence West to complete the 10 miles and 1400 vrs. from beginning. Find no corners. But find the points



O K-FLOWERS
County Surveyor,

STATE OF TEXAS COUNTY OF DICKENS

Dickens, Texas.

1901

for the South corner of T & S. N. Surveys No's 1 & 2 on
Bufords Creek as described in field notes of these
Surveys.

The bearing for N.E. cor of Sec. 25. Shock & Arnold
was found on the ground.

If R.H. Hannah, ^{No. 1} should be given its connection
with T & S. N. No. 2. called for in field notes, it will
lie in a country where it is possible to have the
red md. bearing called for.

But if the three Hannah surveys shown
on plat be connected with Shock & Arnold as
by field notes of No. 19. Then the cor. of No. 1 falls
in a mesq. flat where no view can be had of
any red md. or bluff.

Placing Surveys 1, 2, 3 & 4 T & S. N. in conflict
with T & S. N. & B. S. & F. Surveys - destroy their
connection with B. S. & F. No. 61. and take them more
than two miles from Bufords Creek.

It is clearly shown by this survey that instead of a
Counter 20850

3



O. K. FLOWERS
County Surveyor,

STATE OF TEXAS
COUNTY OF
DICKENS

Dickens, Texas.

1901

conflict, there is a vacancy of 112 vs between the south line of H & N, and the north line of the B & F surveys.

Giving Survey No 91 I. R. Co. its connection from Wm Cain Survey and Establishing lines of 25 Shock & Arnold from its bearings at N.E. cor. shows a vacancy of 242½ vs between said 25 and 91 Also when B. & F. Survey Nos 147 and 148 are located by the Buffalo Head cor there shows to be a vacancy of 433 vs south of these surveys. between them and those that have connections from Cain The same is true of S. K. & K. Nos 151st & 152, as shown by plat

I further certify that all statements made in this instrument are true and correct and that surveys were actually made by me on the ground and that the attached plat is a true and correct plot of work done

Minor Wilson Deputy Surveyor
Dickens Co. Texas,

"F" ~~49~~

Dickens Co Sketch

Filed 7/18/1901 -

See sketch herewith.

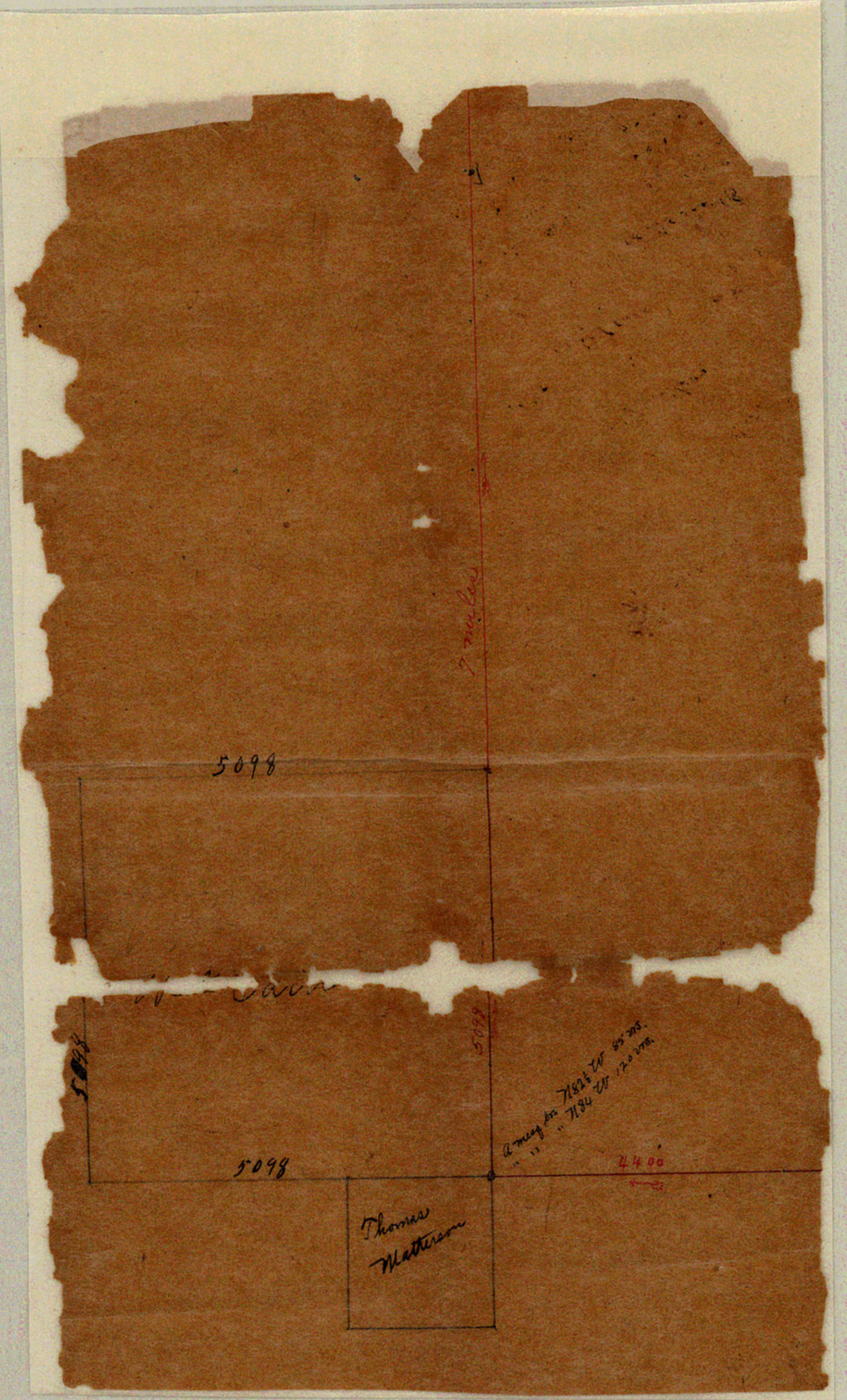
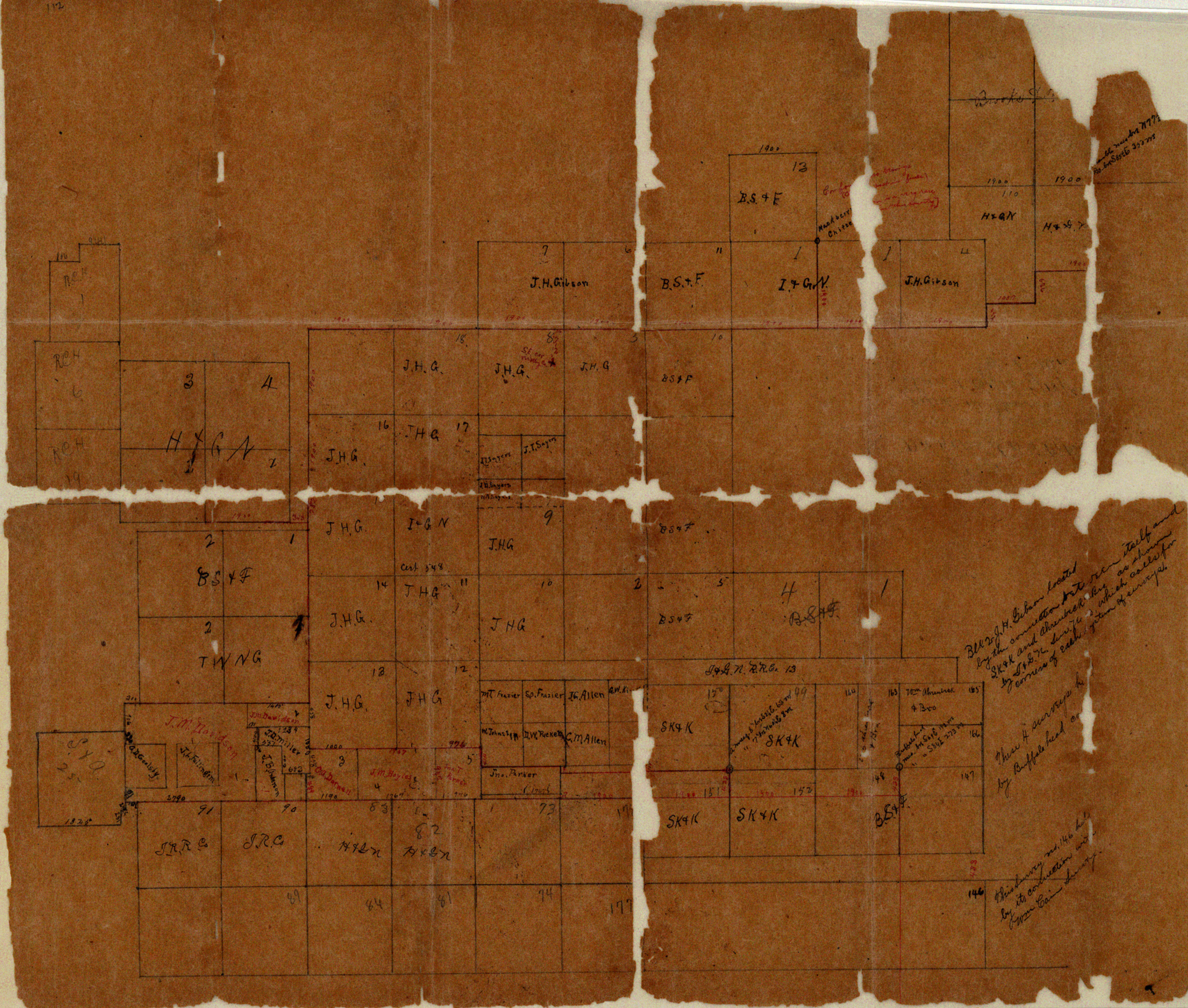
"F!" - ~~EF~~

Minor Wilson's Sketch & Explan-
ation, Filed July 18, 1901 -

WM. H. McDONALD
COMMISSIONER
GENERAL LAND OFFICE
AUSTIN, TEXAS



Counter 20853



SKETCH FILE No. F-1
 COUNTY Dickens