

53-1^a

Dickens Co. Sketch.

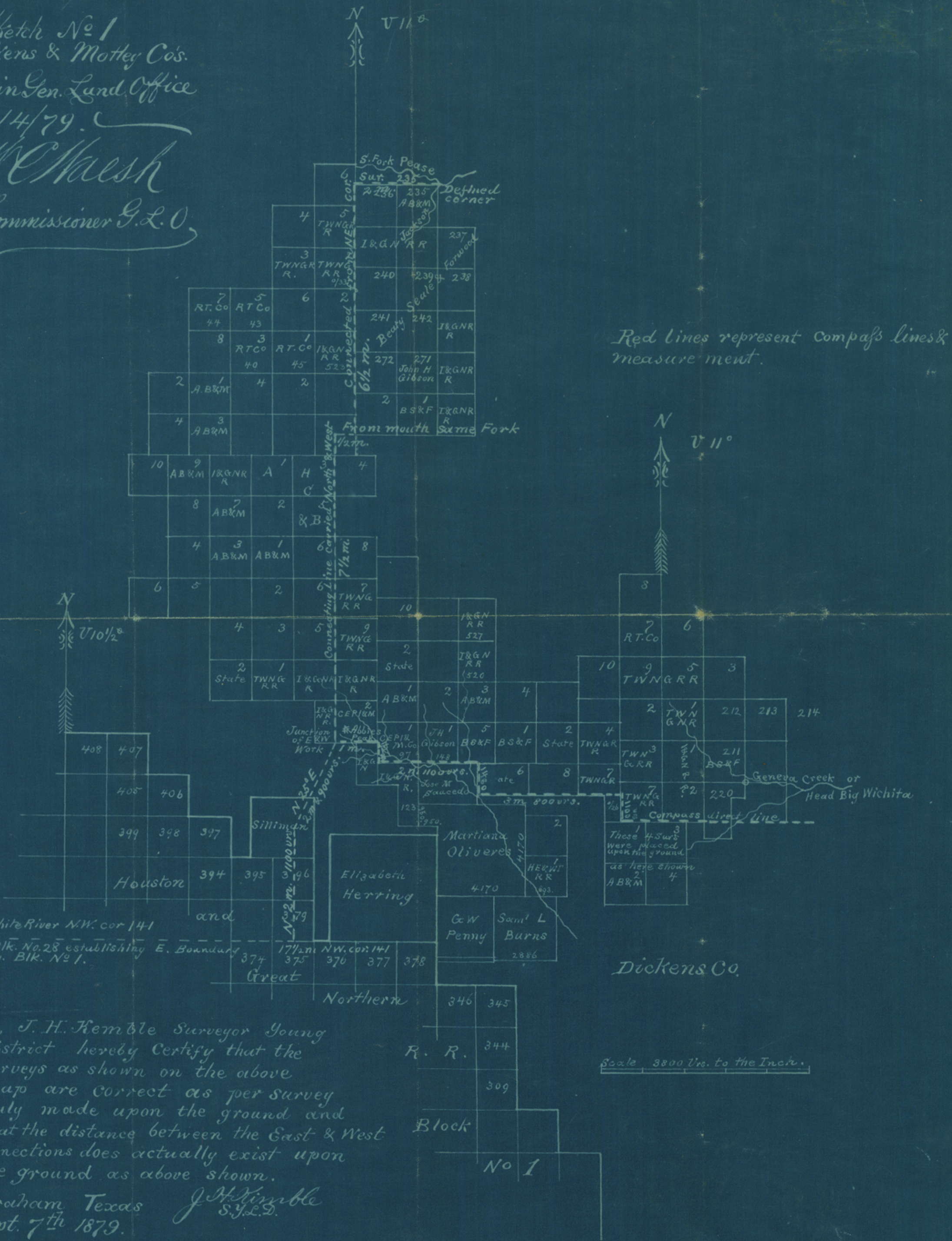
11-14-79.

Showing Original Location
of lands in "slide" 207E+412S.
by J.H. Kimble

Surs around Elizabeth Herring
9-7-79. 11-14-79.

Sketch No 1
 Dickens & Motley Co's.
 Filed in Gen. Land Office
 Nov. 14/79.

McMush
 Commissioner G.L.O.



Red lines represent Compass lines & measurement.

I, J. H. Kemble Surveyor Young District hereby Certify that the surveys as shown on the above map are correct as per survey duly made upon the ground and that the distance between the East & West connections does actually exist upon the ground as above shown.

Graham Texas
 Sept. 7th 1879.

J. H. Kemble
 S. L. O.