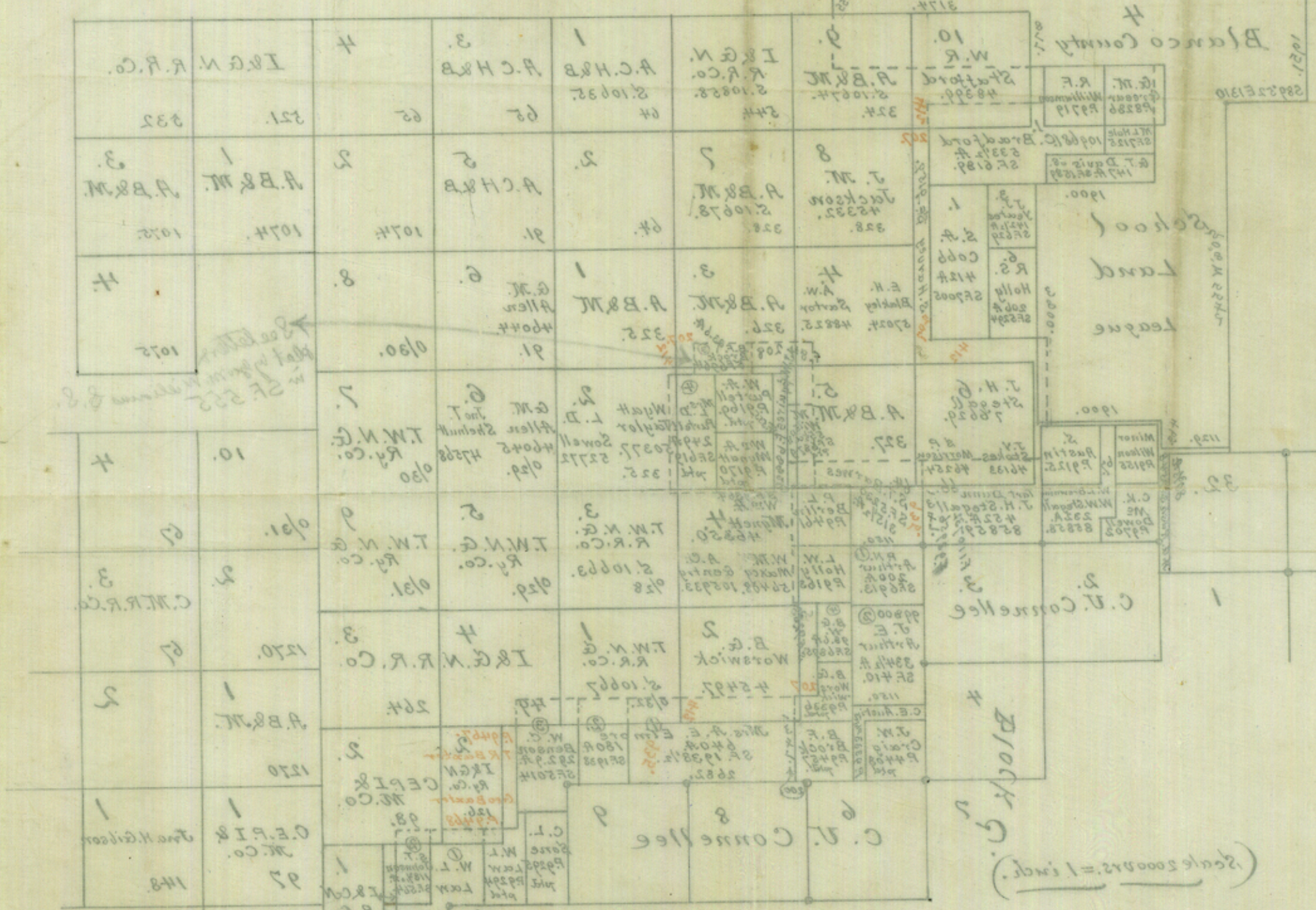
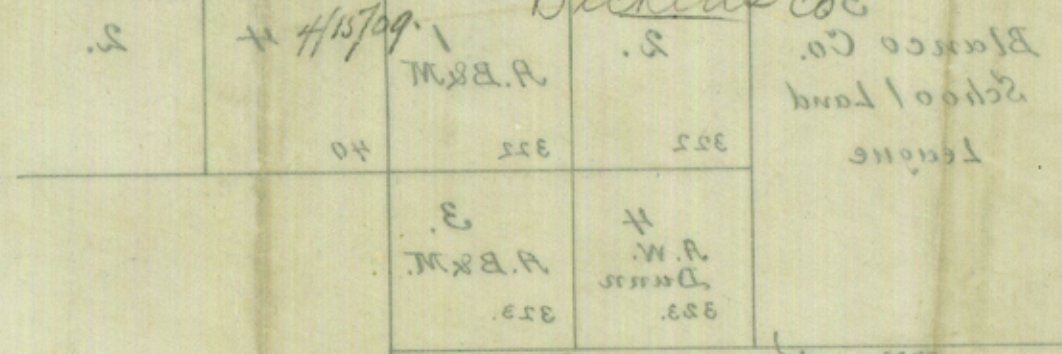


Counter 20977

33  
17

Dickens Co



(Scale 2000 ft. = 1 inch.)

In Dickens County  
Capital according to decree of U.S. Circuit Court at Fort Worth Texas.  
Morton Land & Cattle Co. Ltd. vs R. M. Hawley et al.  
Being 20 yrs. East and 1/2 mi. South from the Iron pipe corners  
established by R. M. Hawley, State Surveyor for the survey made  
by Jasper Hay.

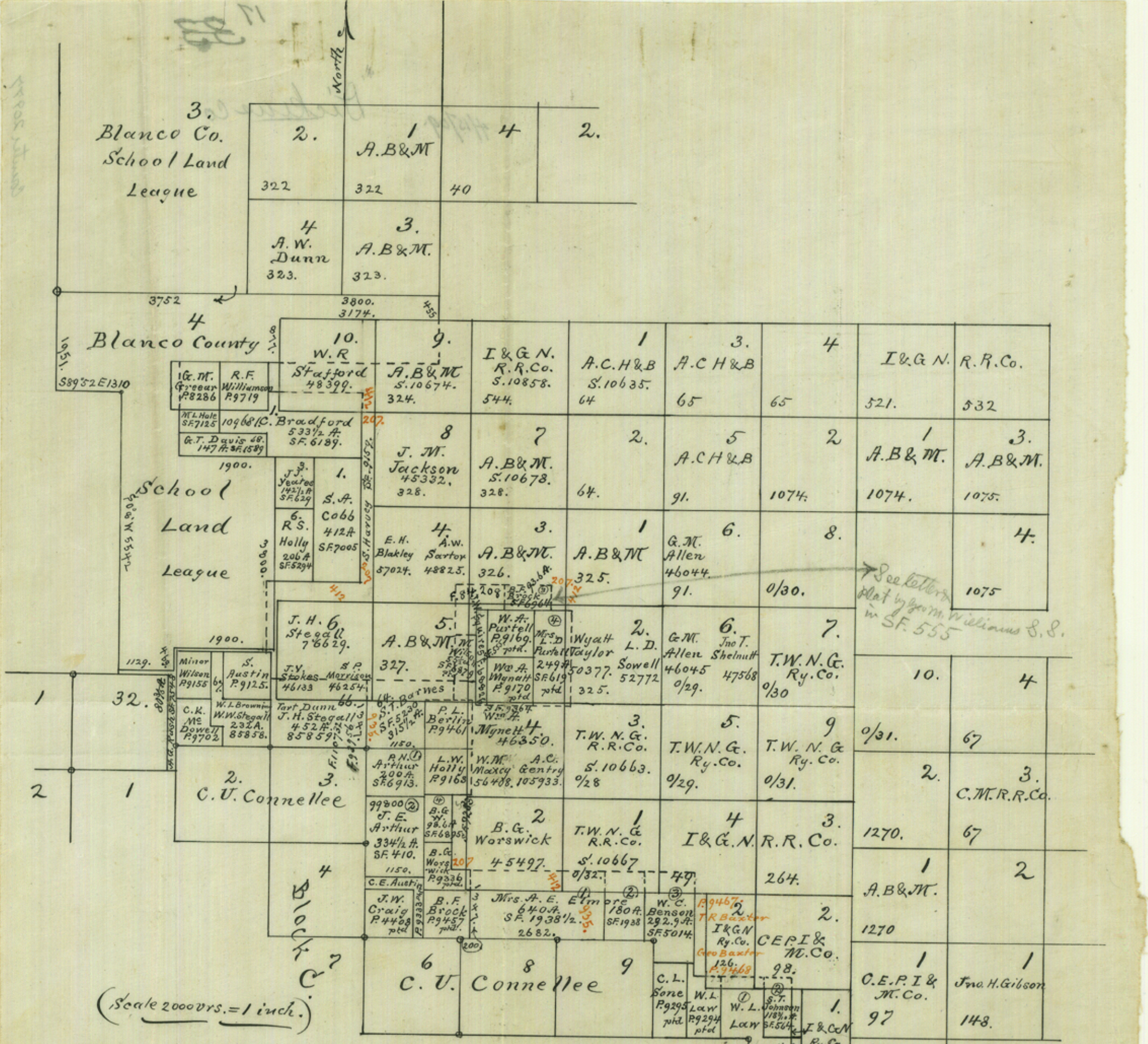
Genl. Land Office, Austin Texas.  
April 15/1909. E. W. Rosenberg  
Examining draftsman

Eligible Having  
Watson

See sketch of  
State Surveyor  
William H. C.  
Also copy of survey  
of Court in file 503.

Counter 20978





In Dickens County  
 Compiled according to decree of U. S. circuit court at Fort Worth Texas.  
 Matador Land & Cattle Co. Ltd. vs R. M. Hamby, et al.  
 Being 207 vrs. East and 412 vrs. South from the Iron pipe corners  
 established by R. M. Kenney, State Surveyor for the surveys made  
 by Jasper Hays.

Genl. Land Office, Austin Texas.  
 April 15/1909. C. von Rosenberg  
 Examining draftsman.

Elizabeth Herring  
 alias  
 Watson

See sketch by  
 State Surveyor Geo. M.  
 Williams & C.  
 Also copy of Decree  
 of court in p. F. 563.

Counter 20978