

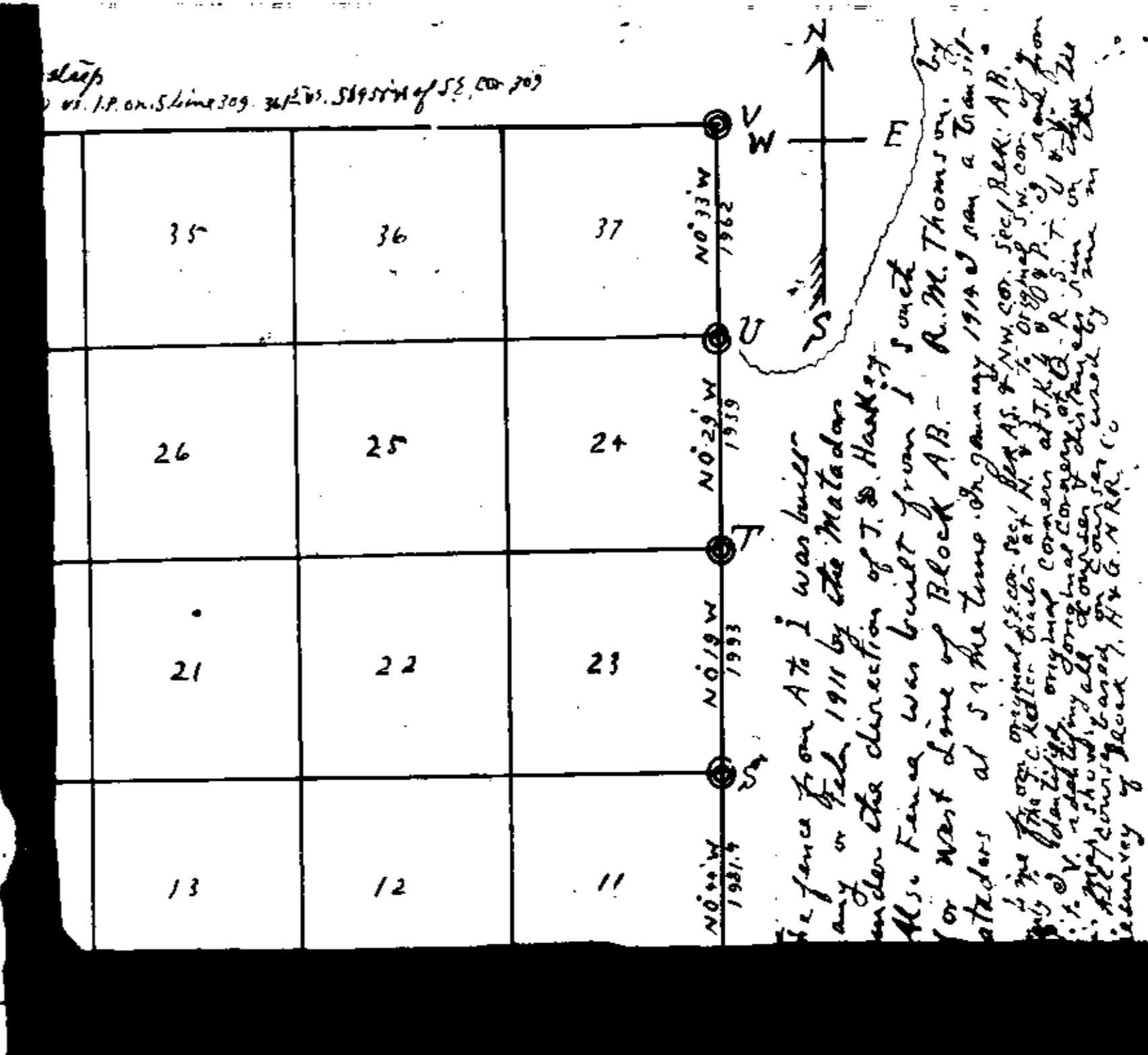
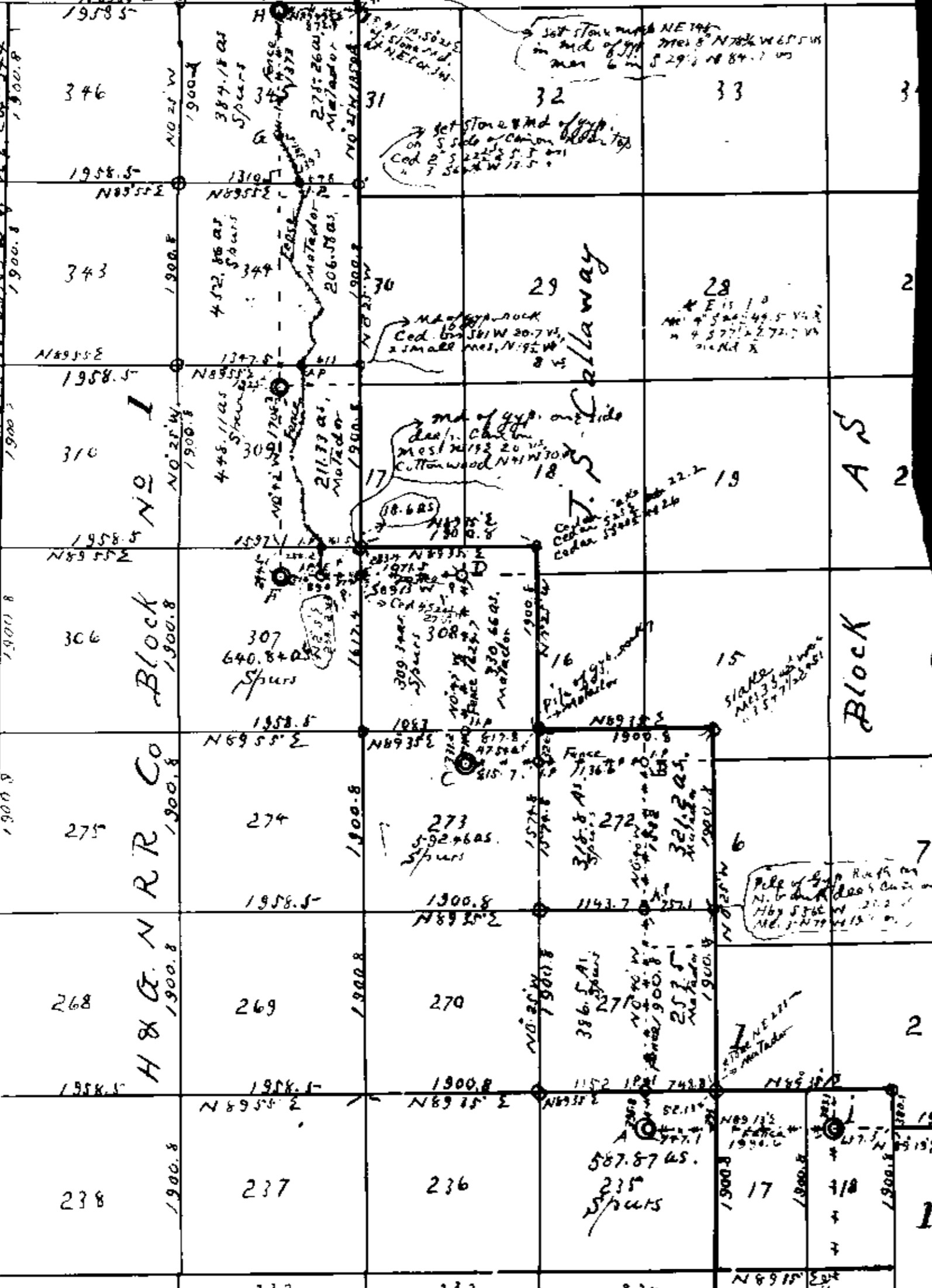
I.P. on this map means iron pipe
Map showing true position of a division fence between the Matador
Land & Cattle Co. Ltd. and lands owned by E.P. Swenson and others.
Said fence lines described in judgement of the U.S. District Court for
the Northern District of Texas dated Nov. 28th. 1917. In September
1918-J.D. Harkey representing the Matador Land & Cattle Co. and myself
representing the Spur Land Co. ran lines for a division fence from
the original SW corner of Section 1 Block
AS J.S. Callaway at A, N 00°40'W 3878.6 varas to the NW corner of
Sec. No. 6, Block AS, we set iron pipe at B on this map, from B we ran
S 89°13'W 1952.3 varas to a stone mound at original SW corner of Sec.
16 Blk. AS at C, Thence N 00°47'W 1955.9 varas to NW corner Sec. 16
at D, we set iron pipe. Thence S 89°13'W at 1071.5 varas set iron pipe
on East line sec. 307 and W line 308 Blk. 1 H & G N R R Co., in all
1445.5 varas set iron pipe at old fence at E, E is 516 varas
N 89°13'E from old stone mound at original SW corner of Sec. 17 Block
AS at F (see map) In our run from A to E for a division fence Harkey
and I adhered to the calls in the Judgement of the Federal Court, A
few days after we staked out the above mentioned division line the
Spur Land Co. had Mat Bingham out up a good fence from A to E, see
map and the fence stands today. Harkey and I also meandered the old
fence across part of Sec. 307 and across Sections 309 and 344 and to
point G, in section 345 and from G to the original NW corner of
Sec. 31 Block AS. The fence from E to G was built in year 1884 by the
Espurella Land and Cattle Co. This date was revealed in testimony of
William Stafford in Federal Court at Fort Worth in Fall of 1917.
Fence from G to F was built in year 1910 or 1911, old fence of 1884
was moved a short distance West from old position of 1884 and set
on West line of Sec. 31 by the Matadors. Fence from H running N 89°
49 1/2 E was built by Matadors at same time as the one from G to
H, H is the original NW corner of Sec. 31 Block AS J.S. Callaway.

The above statement copied from margin of the attached map
and was made by George M. Williams.

Ross Corlett

Meander of Fader across Sec 205 B.E.K. No. 1 H & G. R.R. Co. from I.P. 611. vs. S 89° 15' W on N.E. Cor. 109
 S line 209 as follows: S 71° 00' W 508.2 vs. S 71° 30' W 417 vs. I.P.
 S 10° 18' W 269 vs. I.P. S 27° 20' W 20 vs. I.P. S 95° 45' E 130 vs. I.P.
 S 50° 15' S 30 vs. I.P. S 18° E 120 vs. I.P. South 60 vs. T. I.P. on S
 bank south side a deep canon - S 2° 50' W 257.5 on to I.P. - S 50° 10' W 305.5 vs. I.P. S 2°

Meander of Fader across Sec 205 B.E.K. No. 1 H & G. R.R. Co. from I.P. 611. vs. S 89° 15' W on N.E. Cor. 109
 S line 209 as follows: S 71° 00' W 508.2 vs. S 71° 30' W 417 vs. I.P.
 S 10° 18' W 269 vs. I.P. S 27° 20' W 20 vs. I.P. S 95° 45' E 130 vs. I.P.
 S 50° 15' S 30 vs. I.P. S 18° E 120 vs. I.P. South 60 vs. T. I.P. on S
 bank south side a deep canon - S 2° 50' W 257.5 on to I.P. - S 50° 10' W 305.5 vs. I.P. S 2°



The fence from A to I was built
 any or Feb 1911 by the Matador
 under the direction of T. S. Harkley
 Mrs. Fama was built from I south
 to West line of Block A.B. R. M. Thomson on
 Matadors at S of the time on January 1914 on a line sit-
 ting the J.C. Harkley & Co. vs. R. M. Thomson, Sec. 205, B.E.K. A.B.
 vs. J.C. Harkley & Co. vs. R. M. Thomson, Sec. 205, B.E.K. A.B.
 vs. J.C. Harkley & Co. vs. R. M. Thomson, Sec. 205, B.E.K. A.B.
 vs. J.C. Harkley & Co. vs. R. M. Thomson, Sec. 205, B.E.K. A.B.
 vs. J.C. Harkley & Co. vs. R. M. Thomson, Sec. 205, B.E.K. A.B.

Meander of Fader across Sec. 205 B.E.K. No. 1 H & G. R.R. Co. from I.P. 611. vs. S 89° 15' W on N.E. Cor. 109
 S line 209 as follows: S 71° 00' W 508.2 vs. S 71° 30' W 417 vs. I.P.
 S 10° 18' W 269 vs. I.P. S 27° 20' W 20 vs. I.P. S 95° 45' E 130 vs. I.P.
 S 50° 15' S 30 vs. I.P. S 18° E 120 vs. I.P. South 60 vs. T. I.P. on S
 bank south side a deep canon - S 2° 50' W 257.5 on to I.P. - S 50° 10' W 305.5 vs. I.P. S 2°

Sec 271	386.5m	Spurs	253.5m	Matadors	640 A.
" 272	318.8	"	321.2	"	640 "
" 273	292.6	"	47.5	"	640 "
" 307	60.4	"	18.6	"	640 "
" 308	319.1	"	350.6	"	640 "
" 309	598.1	"	211.32	"	640 "
" 344	472.1	"	206.48	"	640 "
" 345	367.0	"	225.26	"	640 "

J-S Callaway Block A.S.
 R. M. Thomson Block A.B.
 2-400M Williams, the land here is do hereby certify that this may
 in time and copy to in every way that is possible on the survey
 work and that all of the original survey stations on the survey
 are true and correct find in under my hand and seal of Office at
 Spur T. on the 27 day of April 1918 J. W. M. Williams, Licenses Land Surveyor

Showing to
 the Co. Ltd.
 since is on line
 Northern District
 representing the
 Spur Land Co. name
 J. S. Callaway
 in this map. From
 Sec. 205 B.E.K. A.S.
 S 89° 15' W at
 in all other
 med. at or
 for a distance
 west. A
 Spur Land
 land the
 Spur Land
 Block A.S.
 Cattle Co.
 fence from
 distance
 from
 H is the only