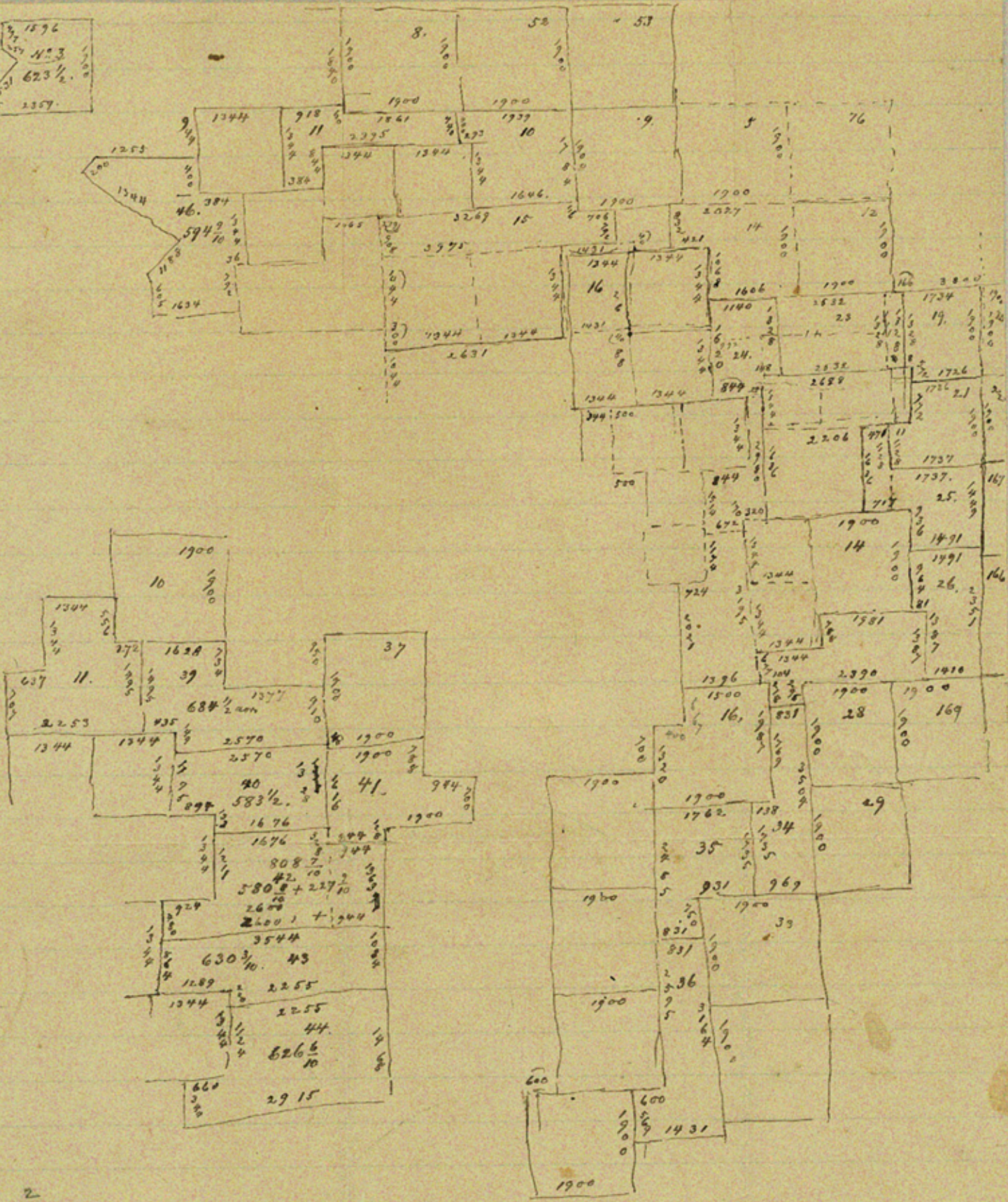


1576
4.3
623 1/2
1357



- 2
- 3
- 4
- 5
- 6
- 7
- 8
- 9
- 10
- 11
- 12
- 13
- 14
- 15
- 16
- 17
- 18 48
- 19 49
- 20 50
- 21
- 22
- 23
- 24
- 25
- 26
- 27
- 28
- 29
- 30
- 31
- 32
- 33
- 34
- 35
- 36
- 37
- 38
- 39
- 40
- 41
- 42
- 43
- 44
- 45
- 46
- 47

No. 28 call of beginning corner for 323 on West of 48
corner of No. 27 has been omitted from field notes
through off

No. 38 correct for 642 1/10 acres
No. 45 correct for 248 acres 5th distance changed to 660 ft.
47 correct for 544 1/2 acres 3rd distance changed to 1045.
48 correct for 657 acres
49 correct for 383 acres.
50 correct.