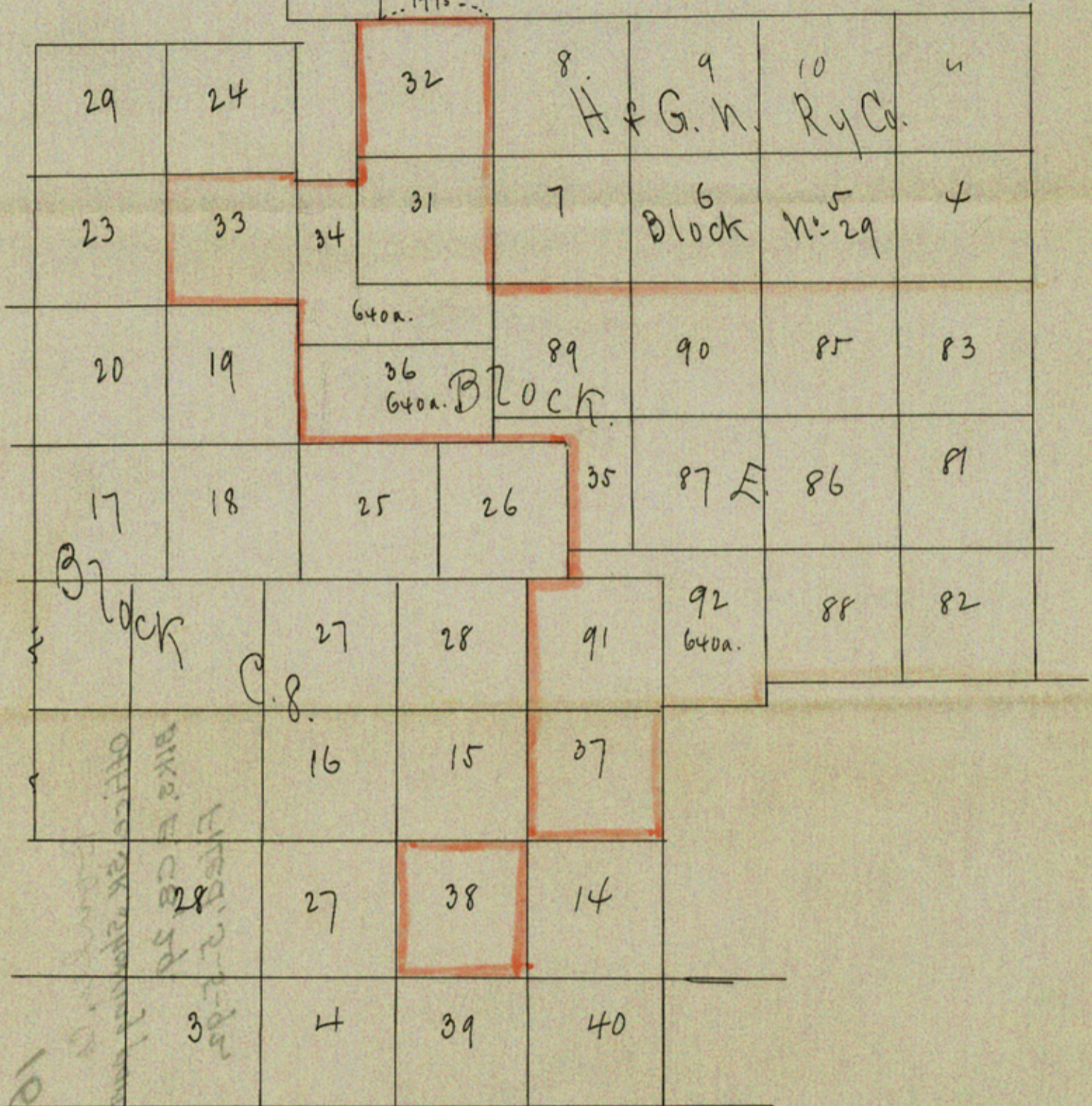


J.G. Swisher.  
1773



(Copy) Sketch of Part of  
Block E Donley County  
Scale: 2000ft = 1 Inch.

General Land O. May 5/92

Showing the proposed resurvey of Part of Block E  
as will be approved by this Office providing all owners  
of patented surveys agree to the correction of their surveys.  
by returning patents to be revised on a resurvey

