

#19<sup>a</sup>  
File ~~19~~ 33

Duval County

Filed June 19<sup>th</sup> 1880

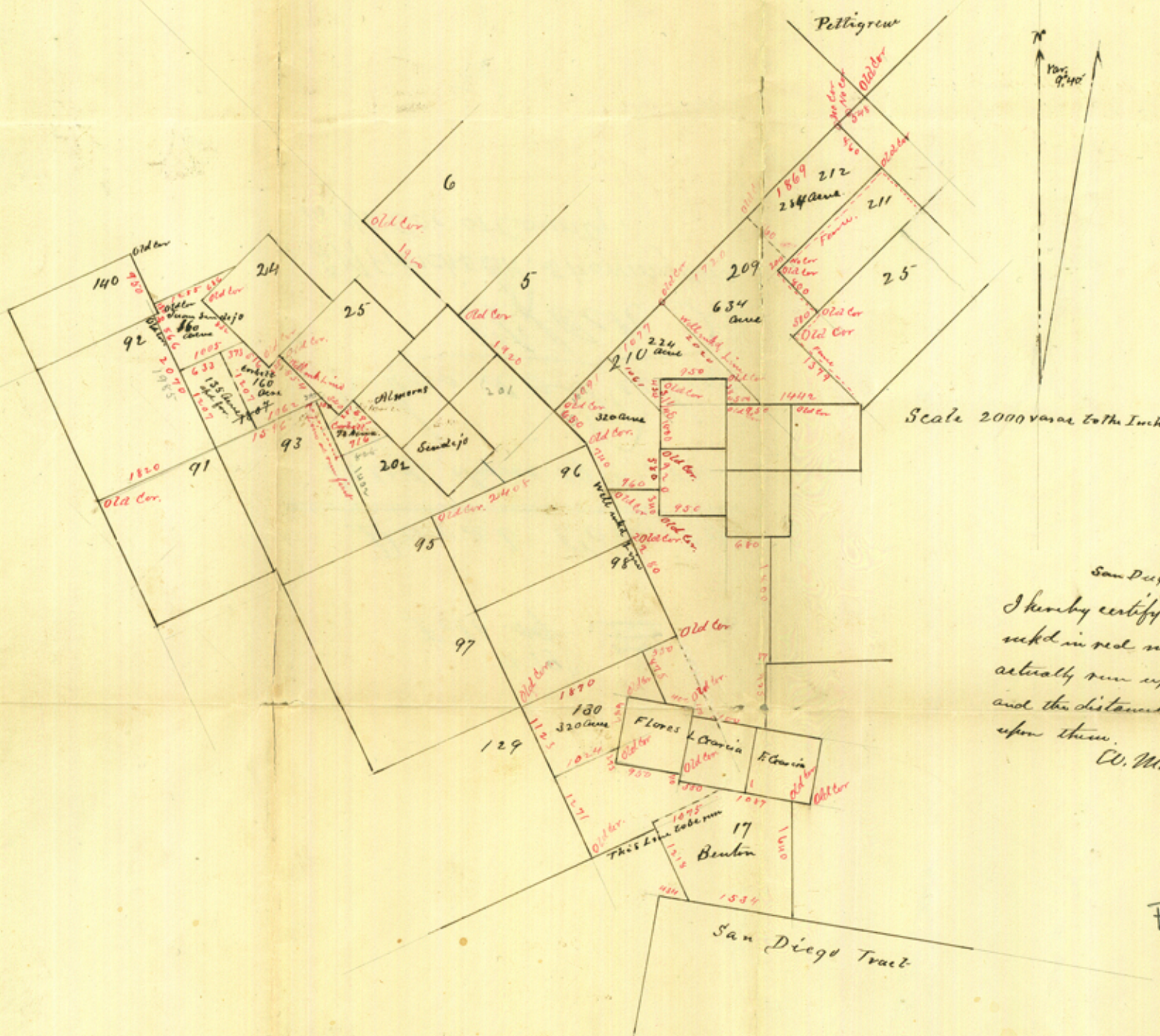
Rhoads Fisher

Ch. Clerk

AM French's SK. showing surs.  
in NE Cor. of County.

FW<sup>1</sup>

Sketch of the N.E. part of  
DUVAL COUNTY



Scale 2000 yards to the Inch

San Diego, Fla. June 10, 1840  
I hereby certify that the lines  
sketch'd in red ink have been  
actually run upon the ground  
and the distances found as marked  
upon them.  
W. M. French  
Co. Surveyor  
Duval Co.

FW