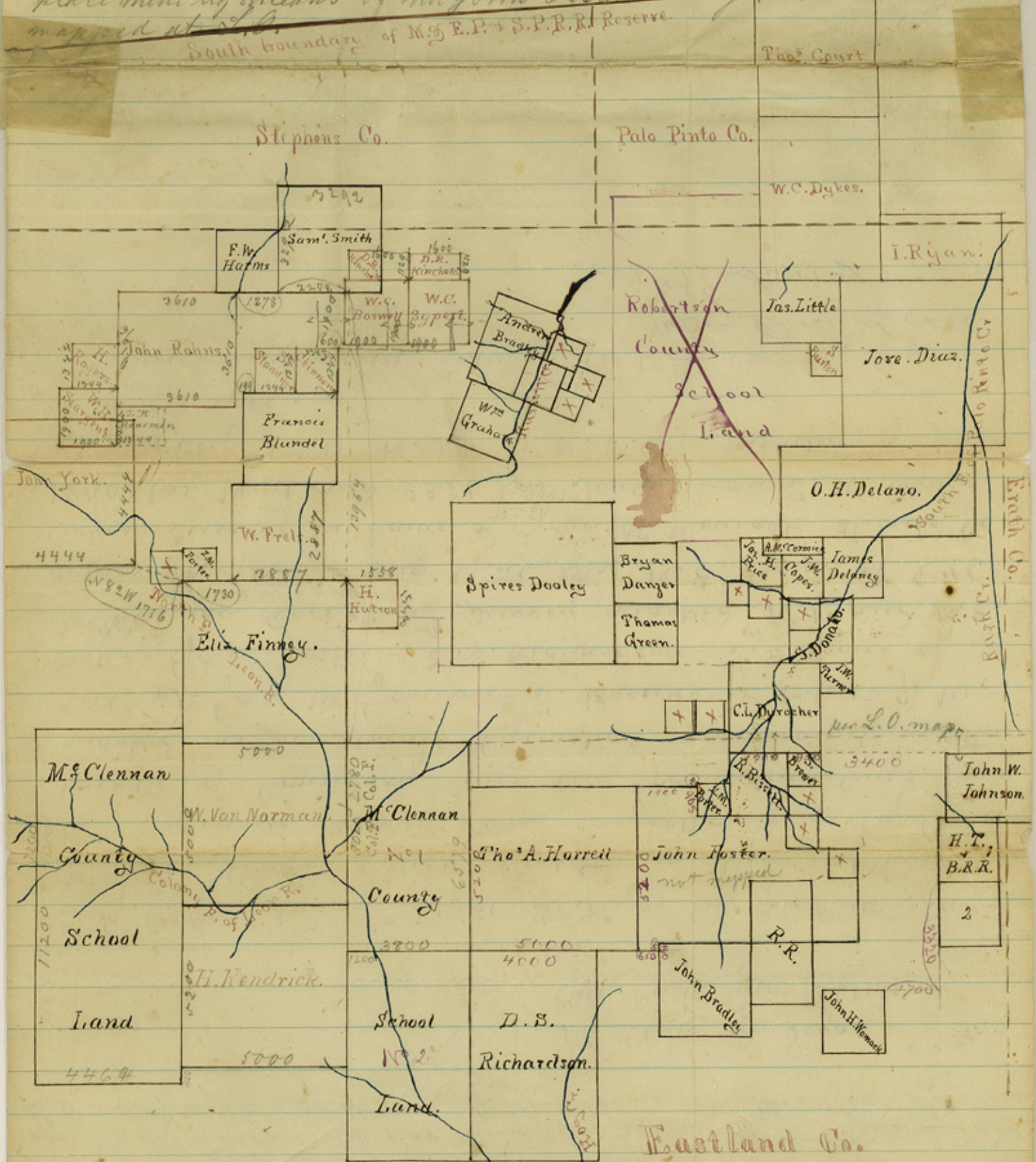


The connection of Sam's Smith being very long, it has always been thought that there is possibly no conflict between the same and the Boswell, supposing the Smith to lie further North. — The Sargeant survey connect to J. N. Mourman, which has not been returned, Geo. B. Croath's map showed the position as now represented in pencil.

As for Support corner being in the line of A. Bradley is a mere supposition. The Land Office map shows G. M. Porter, R. Bissett &c all surveys on South Palo Pinto about 500 vrs further north than you place them by means of the John Foster survey, which is not mapped at all.



(Preemptions marked X)

If the connection furnished through the Foster survey is correct the Bradley will fall South as much as the surveys on South Palo Pinto, as the same connects to them - and L.O. map will not show Superfluous corner in Bradley's line -

The State of Texas }
Palo Pinto Land District }

J. E. P. Davidson - District Surveyor for Palo Pinto Land District - hereby certify that in the within sketch the following surveys are connected, properly (the lengths of boundary lines and connecting lines being marked as ascertained by actual measurement in the field,) - John W. Johnson - S. Brewer - R. Bisset - J. W. Porter - John Foster - D. S. Richardson - S. E. corner of McElman Co. Sch. L^o Survey marked "N^o 1" and N. E. corner of "N^o 2" and that the N. E. corner of 640 Acres Survey in name of John H. Wornack should be 1700 W^o West and 3320 W^o South from S. W. corner of survey N^o 1 - H. J. & B. K. Co. patented to John C. Love - a pec.

Given under my hand this 19th day of April
1872. J. E. P. Davidson
Dist Surveyor

Title No. 7

Eastland Co

East part of the County.

Filed May 2/72. Atkade me

Counter 21575

1-1416
1712
1713