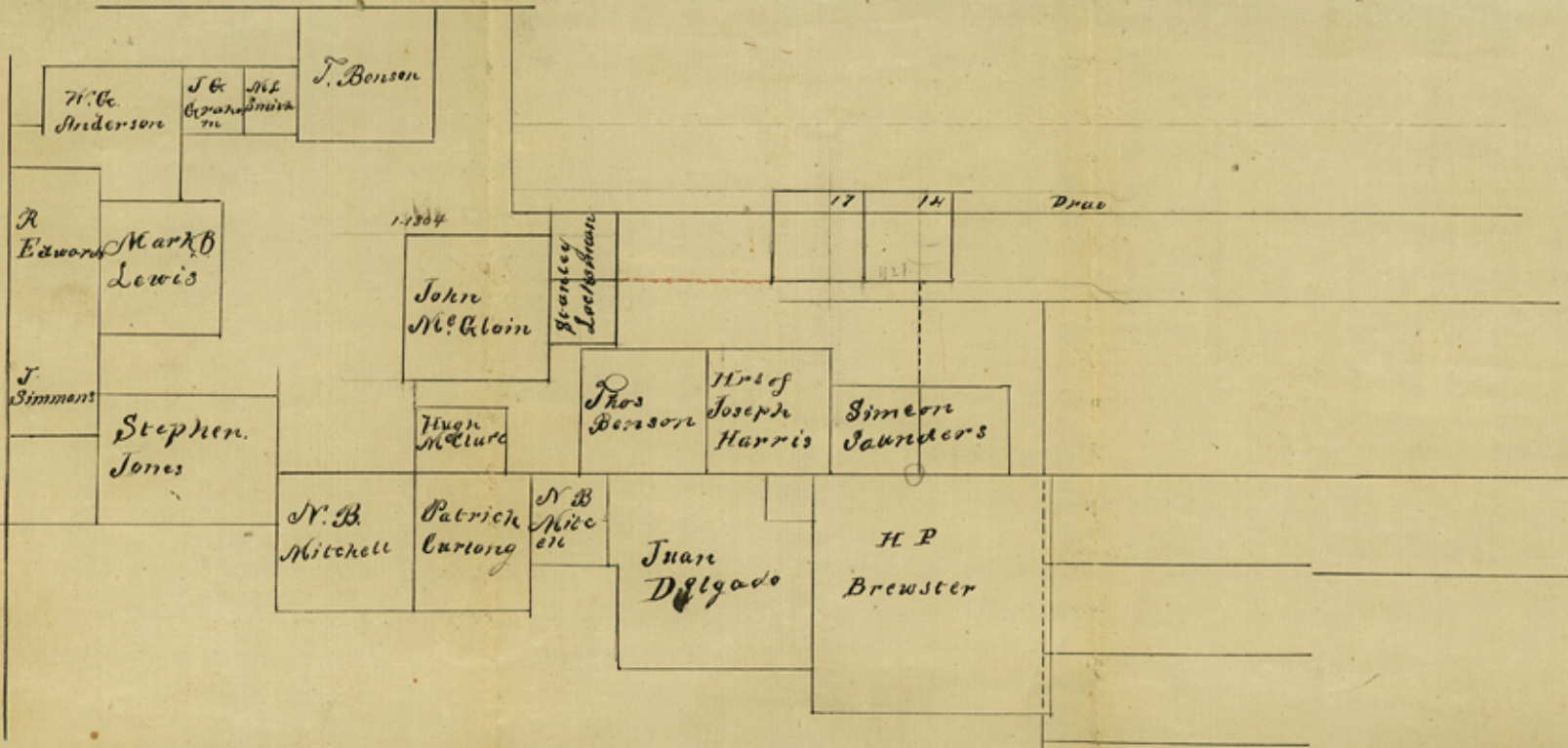


file # ~~18~~ 11:

Castland Co.
S. W. Cor. of said
and S. E. cor. of Gallat.

counter 21585



To the Commissioner General Land Office
Austin

R.G. Armstrong Deputy Surveyor Brown County

I hereby certify that I did begin at the S.E. Corner of No 787 & the S.W. Corner of No 78 & made for Simeon Saunders from which a Post Oak 6 1/2 in dia brs S 56 E 2 1/2 in + a Post Oak brs S 79 E 9 in + a Triple Post Oak brs N 37 1/2 W 12 in; line Thence North at 1900 in leave said survey 4083 in to a Stake on the South of No 14 made for the E. T. R. Co from which a Post Oak 9 in dia brs S 29 1/2 W 8 in + a Post Oak 7 in dia brs S 67 1/2 E 7 3/10 in Thence West at 1127 in passed the S.W. Corner of No 14 at 3027 in pass the S.W. Corner of No 17 at 6542 in pass to a Stake for the N.E. Corner of a survey for Stanley ^{Lockerman} the S.E. Corner of a survey of 320 acres made for said Lockerman from which a Post Oak 12 in dia brs S 75 E 2 1/4 in + a Post Oak 5 in dia brs S 78 1/2 W 10 in I do further certify that I did begin at the S.W. Corner of a survey made for Hugh McClure No 152 & N.E. Corner of No 150 made for N.B. Mitchell from which a Post Oak 16 in dia brs S 78 1/2 E 4 in + a Post Oak 10 in dia brs S 64 1/2 W 7 in Thence North at 1426 in passed the S.W. Corner of said McClure Survey 1968 in to a Stake on the South line of a survey made for John McElain from which a Post Oak 7 in dia brs S 18 E 10 in + a Post Oak brs S 86 1/2 W 8 in Thence West 240 in to a Stone marked for the S.W. Corner of said McElain survey from which a Post Oak 14 in in dia brs N 22 E 45 in

I hereby certify that I have examined the foregoing sketch and find it to be correct

R.G. Armstrong Deputy Surveyor Brown District

H.B. Farver Surveyor B.D.

