

Sketch File No. 19

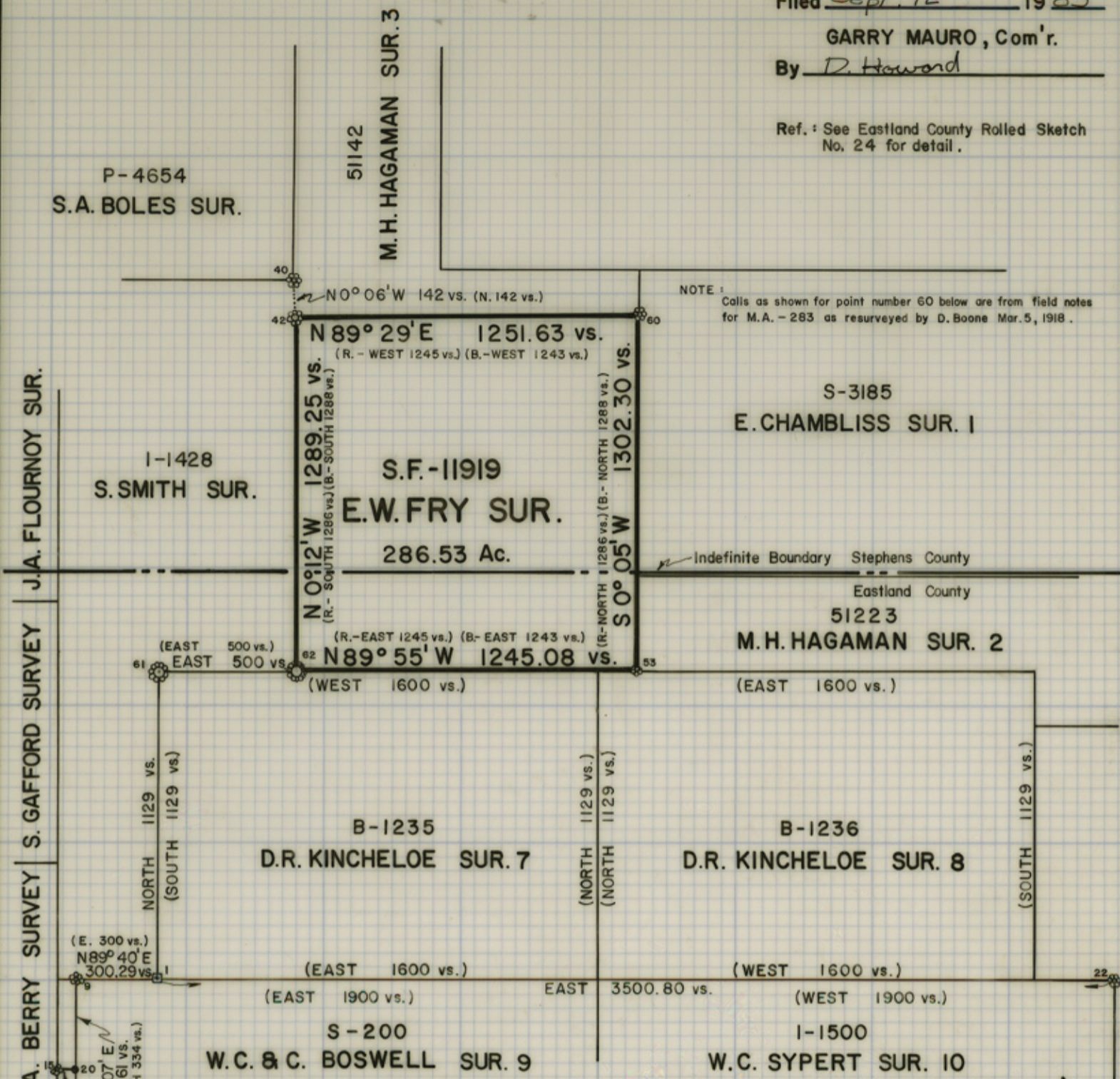
Eastland County

Filed Sept. 12 1983

GARRY MAURO, Com'r.

By D. Howard

Ref.: See Eastland County Rolled Sketch No. 24 for detail.



NOTE: Calls as shown for point number 60 below are from field notes for M.A. - 283 as resurveyed by D. Boone Mar. 5, 1918.

NOTES:

- 1 - Found old concrete monument 4" square 17" up mkd. "TP" on west face in stone mound 1 ft. west of fence corner.
 - 9 - Set 1" galvanized iron pipe mkd. "N.W.C. BOSWELL G.L.O. 1983" in found very old stone mound.
 - 15 - Set 60d nail in center of found old stone mound.
 - 20 - Fence corner post from which found 20" Live Oak with old faint X mark bears N45°E 50.5 vs. (45°E 50.5 vs.).
 - 22 - Set 60d nail in found old scattered stone mound.
 - 40 - Found old stone mound at fence corner.
 - 42 - Found old stone mound - several stones partially embedded and many stones lying close by. Set a 1" galvanized iron pipe 30" long 15" into ground in said mound and piled additional stones around pipe mkd. "N.W.C. FRY G.L.O. 1983", from which found L.O. stump and snag bears N1°20'W 20 vs. (N3°W 20 vs.), 7" L.O. bears N17 3/4°E 22 vs. (N16°E 22 vs.).
 - 53 - Found old scattered stone mound.
 - 60 - Found old stone mound on north slope of mountain about 15 vs. south of center of creek. Set 1 1/2" diameter cedar stake in mound from which a 5" thick and 30" wide lime rock well embedded in ground and 18" up mkd. "+" on north face bears S63°W 5.8 vs. (S63°W 6 vs.), cedar stump S20°W 2.5 vs. (S20°W 2.5 vs.).
 - 61 - Set 1" galvanized iron pipe mkd. "N.W.C. KINCHELOE G.L.O. 1983" and built stone mound around pipe from which a concrete monument same as the one described for said Kincheloe's S.W. corner bears North 8.73 vs. and West 0.80 vs..
 - 62 - Set 1" galvanized iron pipe mkd. "E.S.E.C. SMITH AND S.W.C. FRY G.L.O. 1983" and built stone mound around pipe from which a 6" Post Oak stump bears N0°03'E 10.37 vs. (N10°E 8 1/3 vs.) 10" Post Oak bears N81°42'E 17.23 vs. (N87°E 17.5 vs.).
- Bearings are true based on a solar observation made at point 1 on June 14, 1983
 Distances shown are varas unless otherwise stated.
 H.P. 9831A Tape 4 File 135.
 Field Book 49, Pages 57-68

LEGEND:

- (Record Calls)
- (R. = J.W. Robinson)
- (B. = Dan Boone)

PLAT OF SURVEY
 OF THE
S. SMITH & E.W. FRY SURVEYS
 IN
 STEPHENS & EASTLAND COUNTIES

Surveyed June & July, 1983

Clinton H. Sumrall - L.S.L.S.

About 13 miles N50°E of Eastland, Texas

GENERAL LAND OFFICE - AUSTIN, TEXAS

Scale: 1" = 500 varas 7-25-83 E.L.

Counter 21608