

FILE NO.	STATE	FEDERAL AID PROJECT NO.	SHEET NO.
6	TEXAS	1-20-3(4)343	1
STATE DIST. NO.	COUNTY	STATE CONTROL NO.	PROJECT NO.
23	EASTLAND	7-6-28	14-20

999
941

STATE OF TEXAS
STATE HIGHWAY DEPARTMENT

PLAN OF PROPOSED
RIGHT OF WAY PROJECT

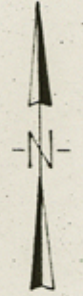
EASTLAND COUNTY
INTERSTATE 20

PROJ. NO. I 20-3(4)343
ACCOUNT NO. 9023-2-7

FROM: 0.8 MILE SW OF RANGER
TO: 1.5 MILES EAST OF RANGER

NET LENGTH OF PROJECT = 30,150.8 FEET = 5.710 MILES
PLAN SCALE = 1" = 100'

P.D. 7030

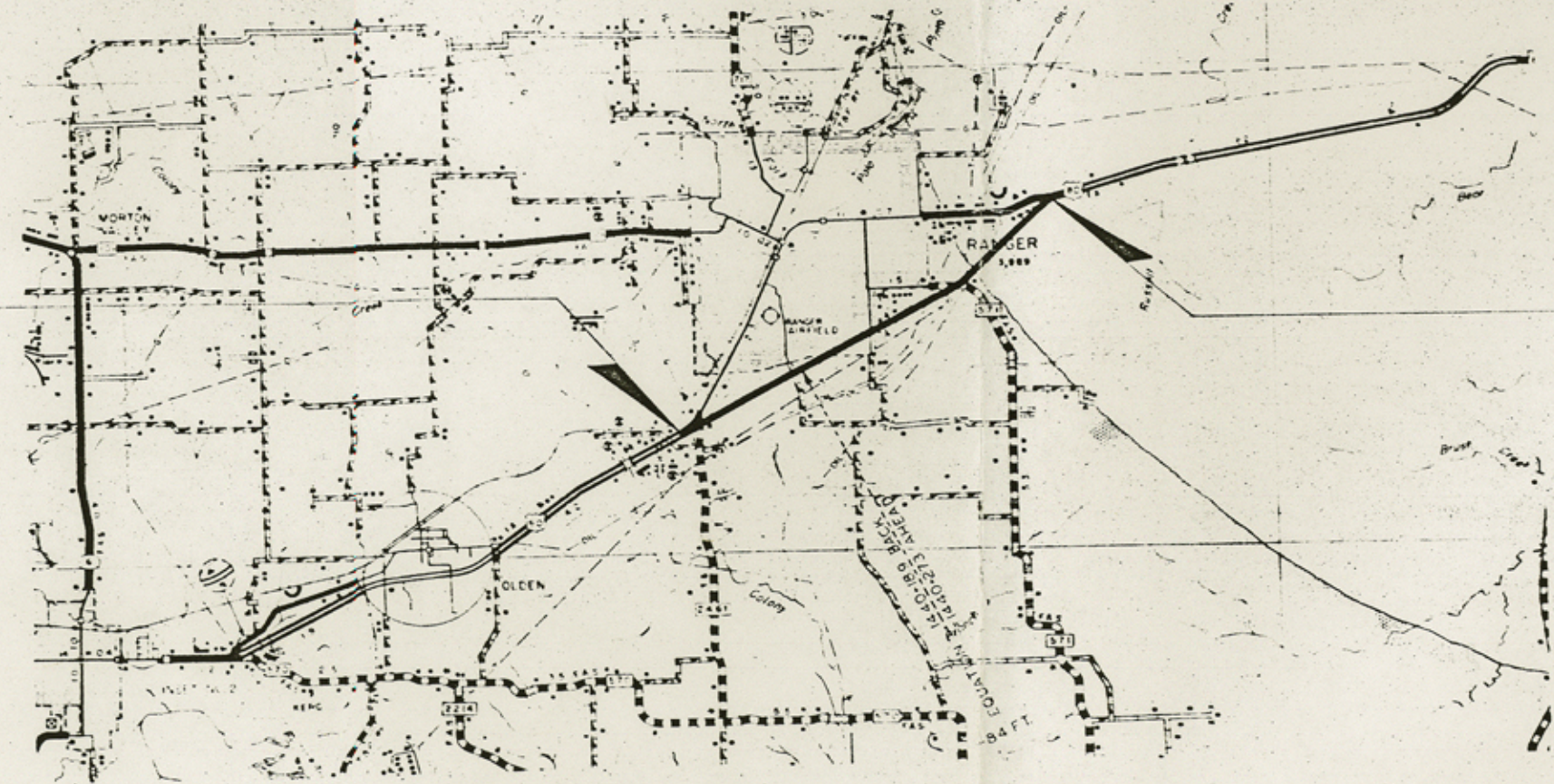


FINAL MAP

File No. Sketch File 22
Eastland County
Filed Sept 2 1957
GARRY MAURO, COMMISSIONER
By Douglas Howard

BEGIN PROJ I 20-3(4)343
BEGIN ACCOUNT RW 9023-2-7
STA. 1338+93.6
= 49' RT. SOUTH LANE
STA 1329+95.0
PROJ. F.I. 19(12) - 1953
CONTROL 7-4-28

END PROJ I 20-3(4)343
END ACCOUNT RW 9023-2-7
STA 1640+52.8 BACK
= STA 1666+18.0 AHEAD



- CONVENTIONAL SIGNS
- RIGHT OF WAY LINE
 - PROPERTY LINE
 - COUNTY LINE
 - CONTROL OF ACCESS LINE
 - SURVEY LINE
 - FENCE
 - POWER LINE
 - TELEPHONE OR TELEGRAPH
 - RAILROAD
 - BRIDGE OR CULVERT
 - CITY LIMITS

LAYOUT SCALE: 1 IN. = 1 MILE

CORRECT APRIL 27, 1964
[Signature]
DISTRICT R.O.W. ENGINEER

APPROVED APRIL 27, 1964
E. M. Ritchard
DISTRICT ENGINEER

DEPARTMENT OF COMMERCE
BUREAU OF PUBLIC ROADS

APPROVED _____ DATE _____
DIVISION ENGINEER

Counter 21626

H.T. & B. RR. CO. SURVEY 2

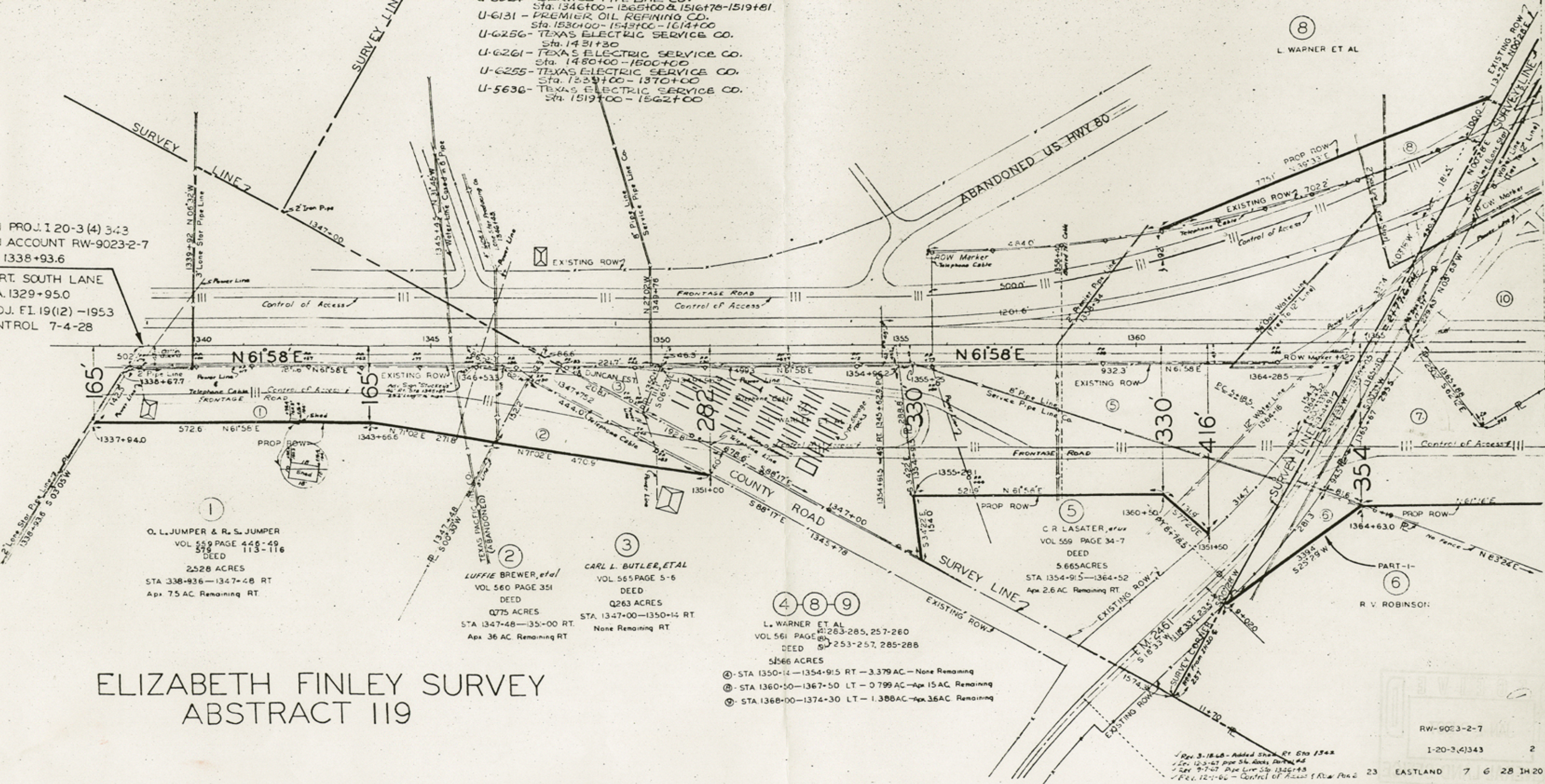
M. M. BUSH SURVEY ABSTRACT 45

- UTILITIES**
- U-612B - SOUTHWESTERN BELL TELEPHONE CO. Sta. 1340+52.8 - 1640+52.8
 - U-634G - THE PERMIAN CORPORATION Sta. 1615+00 - 1661+00
 - U-629G - LONG STAR GAS CO. Sta. 1340+52.8 - 1640+52.8
 - U-6254 - LONG STAR PRODUCING CO. Sta. 1340+52.8 - 1640+52.8
 - U-6278 - TEXAS ELECTRIC SERVICE CO. Sta. 1615+00 - 1645+00
 - U-6265 - TEXAS ELECTRIC SERVICE CO. Sta. 1548+00 - 1566+00
 - U-6205 - CITY OF RANGER Sta. 1480+
 - U-5424 - EASTLAND CO. WATER SUPPLY DIST.
 - U-5524 - SERVICE PIPE LINE CO. Sta. 1346+00 - 1365+00 & 1516+78 - 1519+81
 - U-6131 - PREMIER OIL REFINING CO. Sta. 1530+00 - 1543+00 - 1614+00
 - U-625G - TEXAS ELECTRIC SERVICE CO. Sta. 1431+30
 - U-6261 - TEXAS ELECTRIC SERVICE CO. Sta. 1480+00 - 1500+00
 - U-6255 - TEXAS ELECTRIC SERVICE CO. Sta. 1339+00 - 1370+00
 - U-5636 - TEXAS ELECTRIC SERVICE CO. Sta. 1519+00 - 1562+00



8
L. WARNER ET AL

1 PROJ. 120-3(4) 343
1 ACCOUNT RW-9023-2-7
1338+93.6
RT. SOUTH LANE
1329+95.0
D.J. FL 19(12) -1953
CONTROL 7-4-28



1
O. L. JUMPER & R. S. JUMPER
VOL 559 PAGE 446-49
DEED 113-116
2528 ACRES
STA 1338-936-1347-48 RT
Apx 75 AC Remaining RT.

2
LUFFIE BREWER, et al
VOL 560 PAGE 351
DEED
0775 ACRES
STA 1347-48-1351-00 RT
Apx 36 AC Remaining RT

3
CARL L. BUTLER, ETAL
VOL 565 PAGE 5-6
DEED
Q263 ACRES
STA. 1347+00-1350+14 RT
None Remaining RT

4 8 9
L. WARNER ET AL
VOL 561 PAGE 263-285, 257-260
DEED 253-257, 285-288
51566 ACRES

5
C. R. LASATER, et al
VOL 559 PAGE 34-7
DEED
5665 ACRES
STA 1354-915-1364+52
Apx 2.6 AC Remaining RT

6
R. V. ROBINSON

- ④ - STA 1350+14 - 1354+915 RT - 3.379 AC - None Remaining
- ⑧ - STA 1360+50 - 1367+50 LT - 0.799 AC - Apx 15 AC Remaining
- ⑨ - STA 1368+00 - 1374+30 LT - 1.388 AC - Apx 36 AC Remaining

ELIZABETH FINLEY SURVEY ABSTRACT 119



8
WARNER ET AL

9
L. WARNER ET AL

11
MILDRED PICKRELL
VOL. 612 PAGE 124
COND. PROC.
30.72 ACRES
STA. 1375+32 — STA. 1402+54.8
APX. 117 ACRES REMAIN LT.
APX. 91 ACRES REMAIN RT.

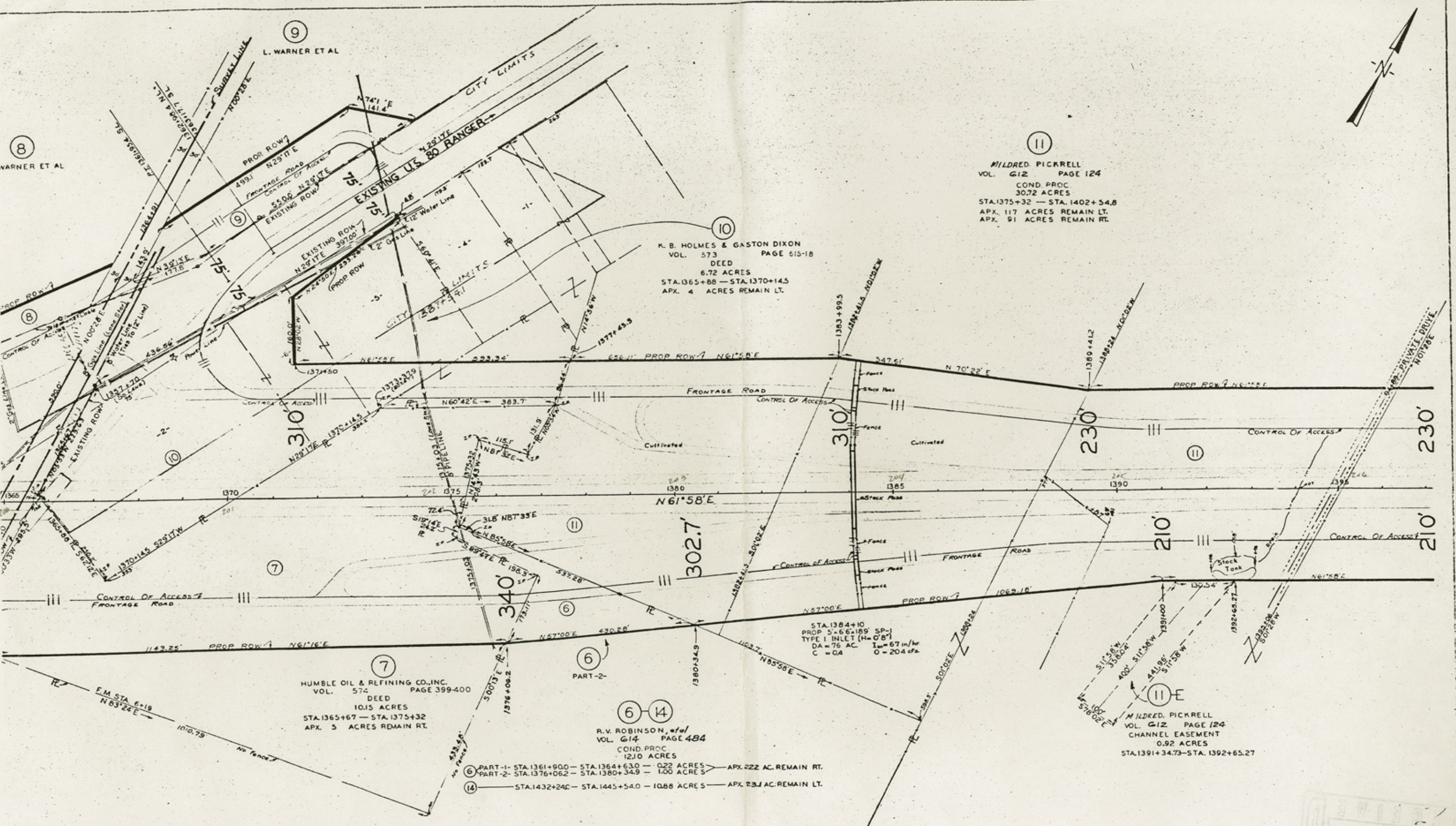
10
K. B. HOLMES & GASTON DIXON
VOL. 573 PAGE 615-18
DEED
6.72 ACRES
STA. 1365+88 — STA. 1370+14.5
APX. 4 ACRES REMAIN LT.

7
HUMBLE OIL & REFINING CO., INC.
VOL. 574 PAGE 399-400
DEED
10.15 ACRES
STA. 1365+67 — STA. 1375+32
APX. 5 ACRES REMAIN RT.

6
PART-1- STA. 1361+900 — STA. 1364+630 — 0.22 ACRES — APX. 222 AC. REMAIN RT.
PART-2- STA. 1376+062 — STA. 1380+34.9 — 1.00 ACRES
14
R. V. ROBINSON, et al
VOL. 614 PAGE 484
COND. PROC.
12.10 ACRES
STA. 1432+240 — STA. 1445+54.0 — 10.88 ACRES — APX. 231 AC. REMAIN LT.

11 E
MILDRED PICKRELL
VOL. 612 PAGE 124
CHANNEL EASEMENT
0.92 ACRES
STA. 1391+34.73 — STA. 1392+65.27

STA. 1384+10
PROP. 5'-66" x 189' SP-1
TYPE I INLET (H=0'8")
DA = 76 AC I_{max} = 67 in/hr
C = 0.4 O = 204 cfs



WILLIAM FRELL SURVEY ABSTRACT 120

Revised Feb. 27, 1967 - Added Parcel 11-E & Stock Box
Revised Dec. 1, 1966
REV. 2-1-65 — ADD. STR. STA. 1384+10

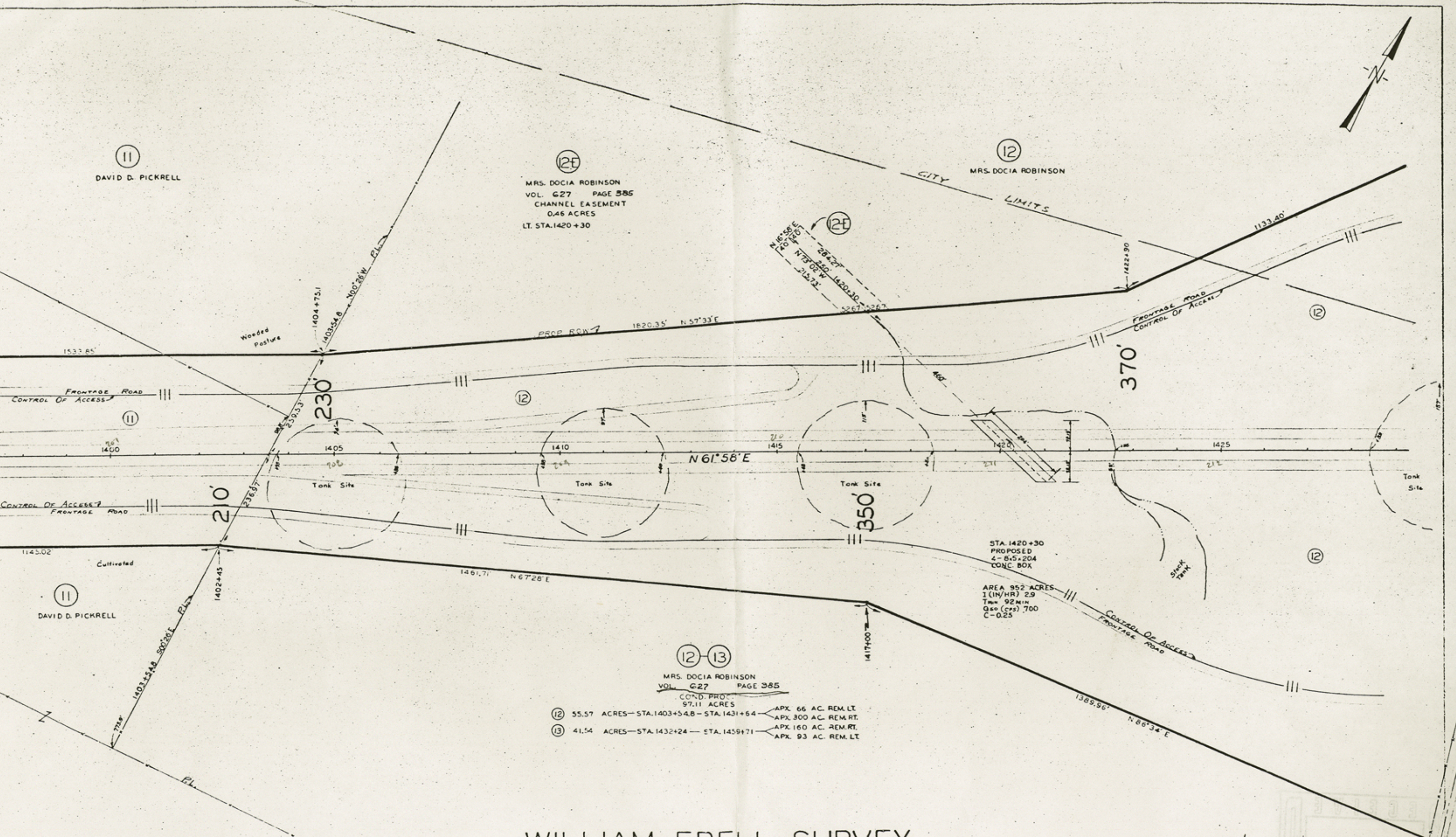
RW-9023-2-7
1-20-3(4)343
3
23 EASTLAND 7 6 28 11 20
COUNTY 21628



11
DAVID D. PICKRELL

12E
MRS. DOCIA ROBINSON
VOL. 627 PAGE 385
CHANNEL EASEMENT
0.46 ACRES
LT. STA. 1420+30

12
MRS. DOCIA ROBINSON



FRONTAGE ROAD
CONTROL OF ACCESS

CONTROL OF ACCESS
FRONTAGE ROAD

STA. 1420+30
PROPOSED
4'-8.5'x204'
CONC. BOX

AREA 952 ACRES
1 (IN/HR) 2.9
T_{min} 92 MIN
Q₅₀ (CRS) 700
C-0.25

12 13
MRS. DOCIA ROBINSON
VOL. 627 PAGE 385
COND. PROJ.
97.11 ACRES

- 12 55.57 ACRES—STA. 1403+54.8—STA. 1431+64 APX. 66 AC. REM. LT.
APX. 300 AC. REM. RT.
- 13 41.54 ACRES—STA. 1432+24—STA. 1459+71 APX. 160 AC. REM. RT.
APX. 93 AC. REM. LT.

WILLIAM FRELL SURVEY ABSTRACT 120

Revised MAR. 7, 1967 - Reminders Sta. Lt. Parcel 13
Revised JAN. 12, 1967 - ROW PAR. 12
Revised DEC. 1, 1966
REV. 11-8-64 - ADD STR. Sta. 1420+30
REV. 8-17-64 CHANGED REM. AC. PAR. 12

4

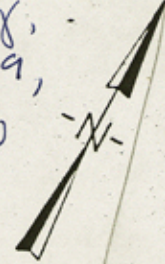
RW-9023-2-7
1-20-3(4)343
23 EASTLAND 7 G 28 1H 20

counter 21629

WILLIAM FRELL SURVEY ABSTRACT 120

2-3-97

*Per Roy Motina of Surveying,
this is the location of M.-2679,
subtracting 6.5 acres for ROW*



12

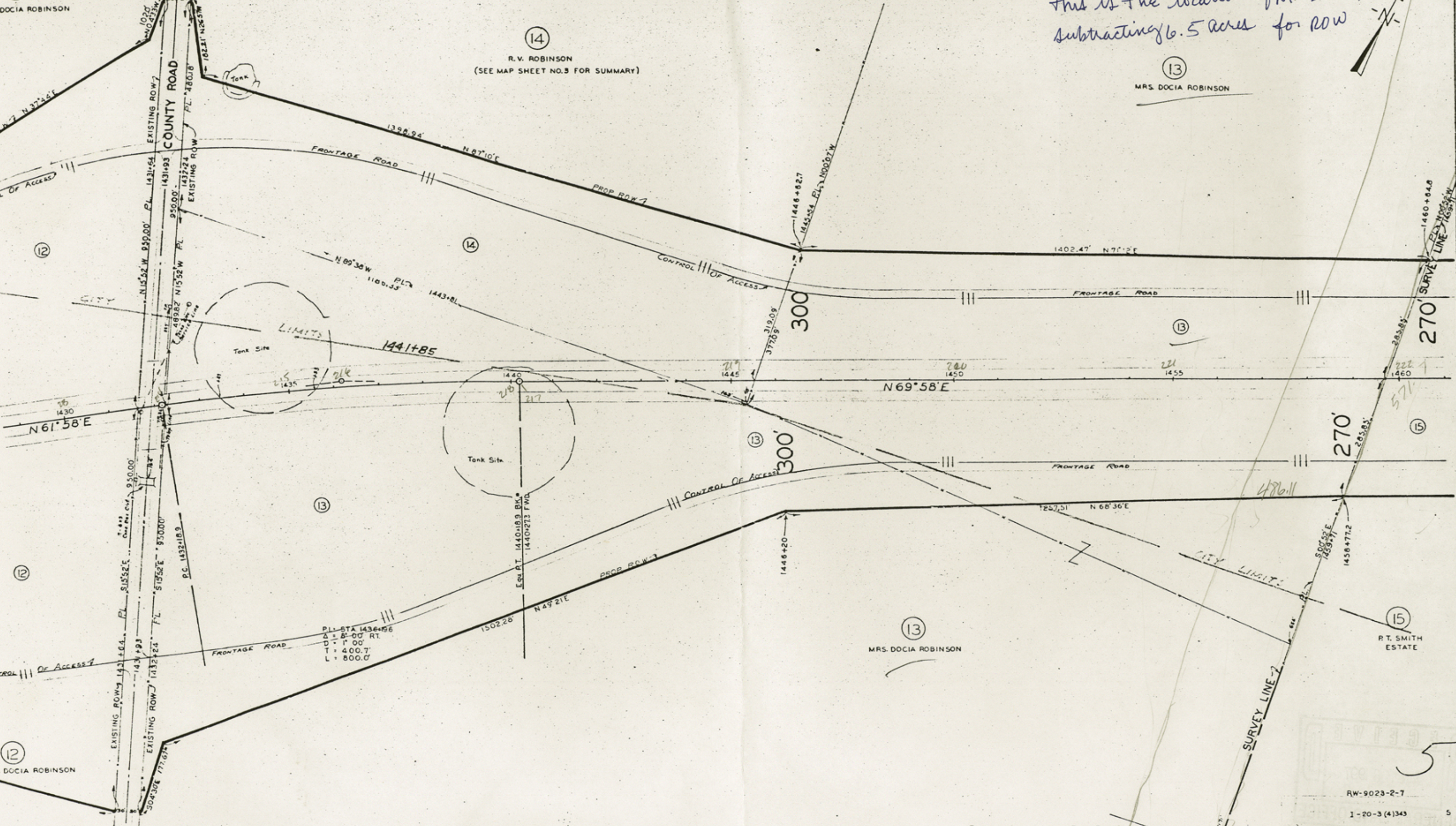
DOCIA ROBINSON

14

R. V. ROBINSON
(SEE MAP SHEET NO. 3 FOR SUMMARY)

13

MRS. DOCIA ROBINSON



12

DOCIA ROBINSON

13

MRS. DOCIA ROBINSON

15

R. T. SMITH
ESTATE

12

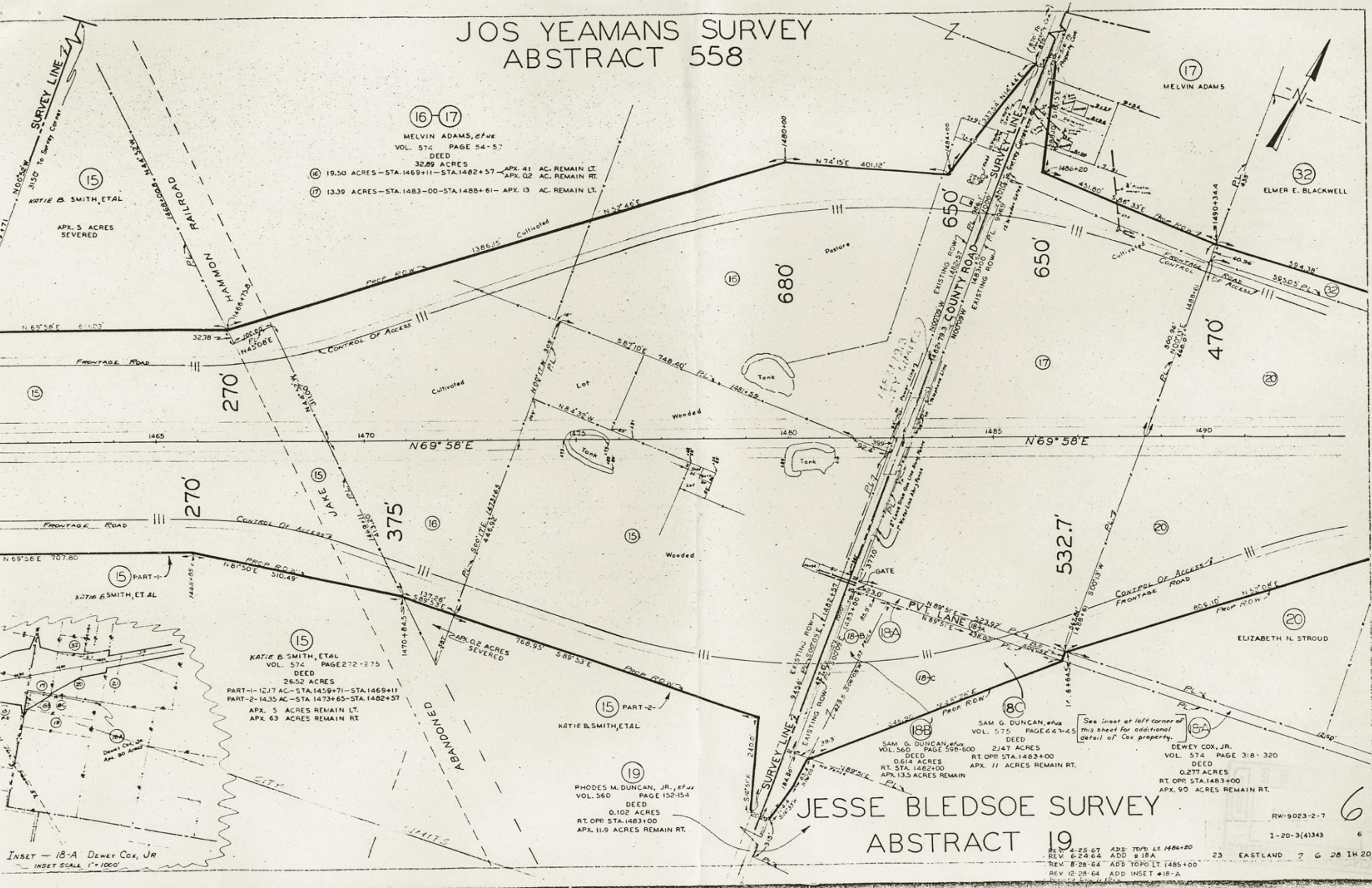
DOCIA ROBINSON

RECEIVED
RW-9023-2-7
1-20-3 (4) 343 5
23 EASTLAND 7 6 28 IH 20

Revised Jan. 12, 1967 - ROW Par. 12
Revised Dec. 1, 1966

County 21630

JOS YEAMANS SURVEY ABSTRACT 558



⑬ ⑭

MELVIN ADAMS, et ux
VOL. 574 PAGE 54-57
DEED

⑬ 19.50 ACRES - STA. 1469+11 - STA. 1482+57 - APX. 41 AC. REMAIN LT.
APX. 02 AC. REMAIN RT.
⑭ 13.39 ACRES - STA. 1483+00 - STA. 1488+61 - APX. 13 AC. REMAIN LT.

⑮
KATIE B. SMITH, ET AL
VOL. 574 PAGE 272-275
DEED
26.52 ACRES
PART-1 - 12.17 AC - STA. 1459+71 - STA. 1469+11
PART-2 - 14.35 AC - STA. 1473+65 - STA. 1482+57
APX. 5 ACRES REMAIN LT.
APX. 63 ACRES REMAIN RT.

⑲
PHODES M. DUNCAN, JR., et ux
VOL. 560 PAGE 152-154
DEED
0.102 ACRES
RT. OPP. STA. 1483+00
APX. 11.9 ACRES REMAIN RT.

⑱B
SAM G. DUNCAN, et ux
VOL. 560 PAGE 598-600
DEED
0.614 ACRES
RT. STA. 1482+00
APX. 13.5 ACRES REMAIN

⑱C
SAM G. DUNCAN, et ux
VOL. 575 PAGE 447-45
DEED
2.147 ACRES
RT. OPP. STA. 1483+00
APX. 11 ACRES REMAIN RT.

⑱A
DEWEY COX, JR.
VOL. 574 PAGE 318-320
DEED
0.277 ACRES
RT. OPP. STA. 1483+00
APX. 90 ACRES REMAIN RT.

JESSE BLEDSOE SURVEY ABSTRACT 19

INSET - 18-A Dewey Cox, Jr
INSET SCALE 1" = 1000'

REV. 4-25-67 ADD TOPO LT 1486+20
REV. 6-24-64 ADD # 18A
REV. 8-28-64 ADD TOPO LT 1485+00
REV. 12-28-64 ADD INSET # 18-A

RW-9023-2-7
1-20-3(4)343

Counter 21631

JESSE BLEDSOE SURVEY ABSTRACT 19

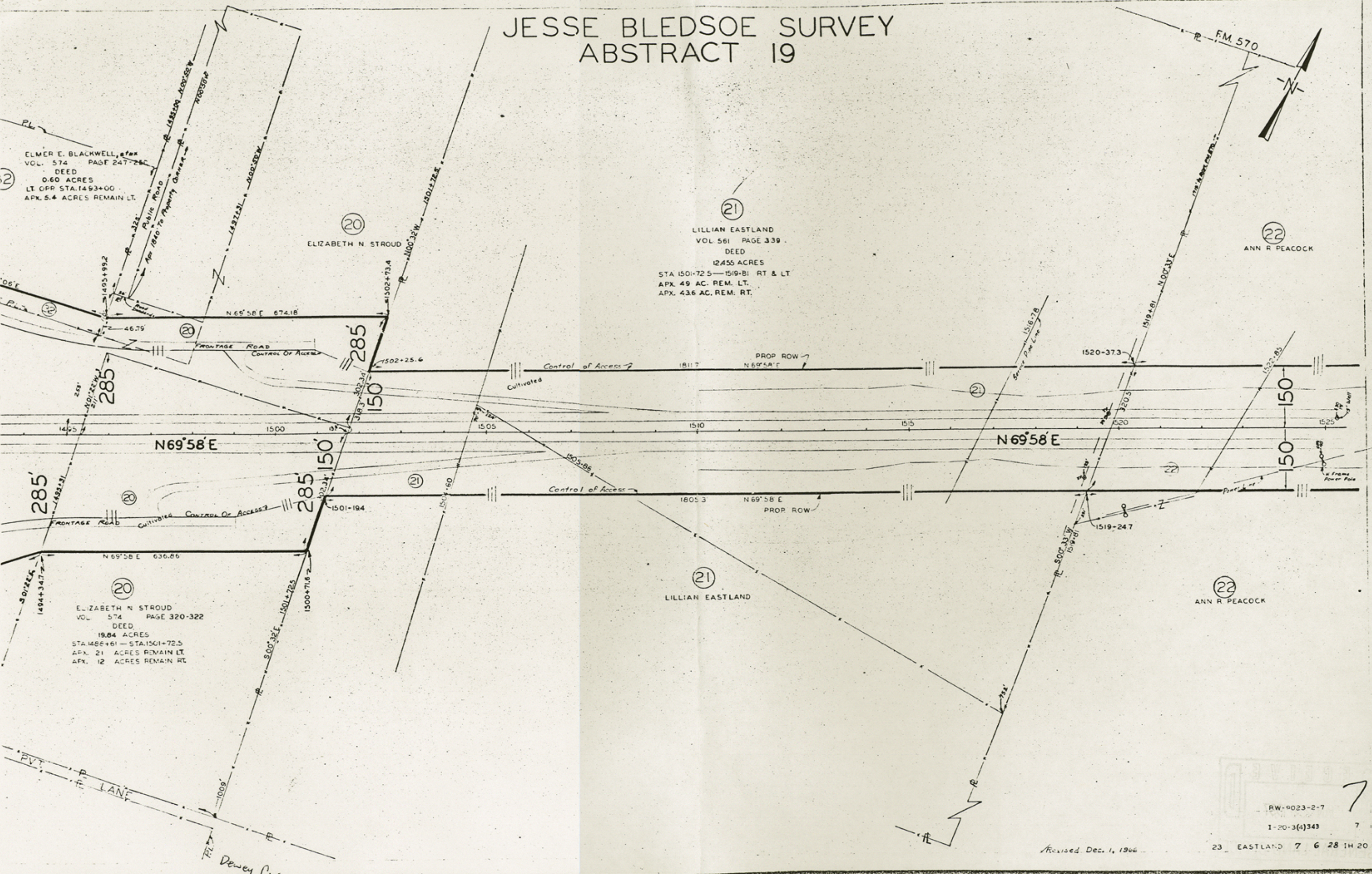


ELMER E. BLACKWELL, et al
VOL. 574 PAGE 247-26
DEED
0.60 ACRES
LT OFR STA. 1493+00
APX. 5.4 ACRES REMAIN LT.

(20)
ELIZABETH N. STROUD

(21)
LILLIAN EASTLAND
VOL. 561 PAGE 339
DEED
12.455 ACRES
STA 1501-72.5—1519-81 RT & LT
APX. 49 AC. REM. LT.
APX. 43.6 AC. REM. RT.

(22)
ANN R. PEACOCK



(20)
ELIZABETH N. STROUD
VOL. 574 PAGE 320-322
DEED
19.84 ACRES
STA 1486+61—STA 1501+72.5
APX. 21 ACRES REMAIN LT.
APX. 12 ACRES REMAIN RT.

(21)
LILLIAN EASTLAND

(22)
ANN R. PEACOCK

RW-9023-2-7
1-20-3(4)343
23 EASTLAND 7 6 28 14 20

Revised Dec. 1, 1966

Counter 21632

JESSE BLEDSOE SURVEY ABSTRACT 19

25
ESTATE OF
J M WINSETT & LUCY WINSETT

22
ANN R PEACOCK, et vir
VOL 561 PAGE 68
DEED
29.258 ACRES
STA. 1519+61 - 1550-76 RT & LT.
APX. 60.2 AC. REM. LT.
APX. 198 AC. REM. RT.

PI STA 1548+45.4
Δ = 28° 30' LT
D = 2' 00"
T = 7276'
L = 1425.0'

S.E. STIFFLER
SURVEY
ABST. 1480

DENNIS HARROLD SUR.
ABSTRACT

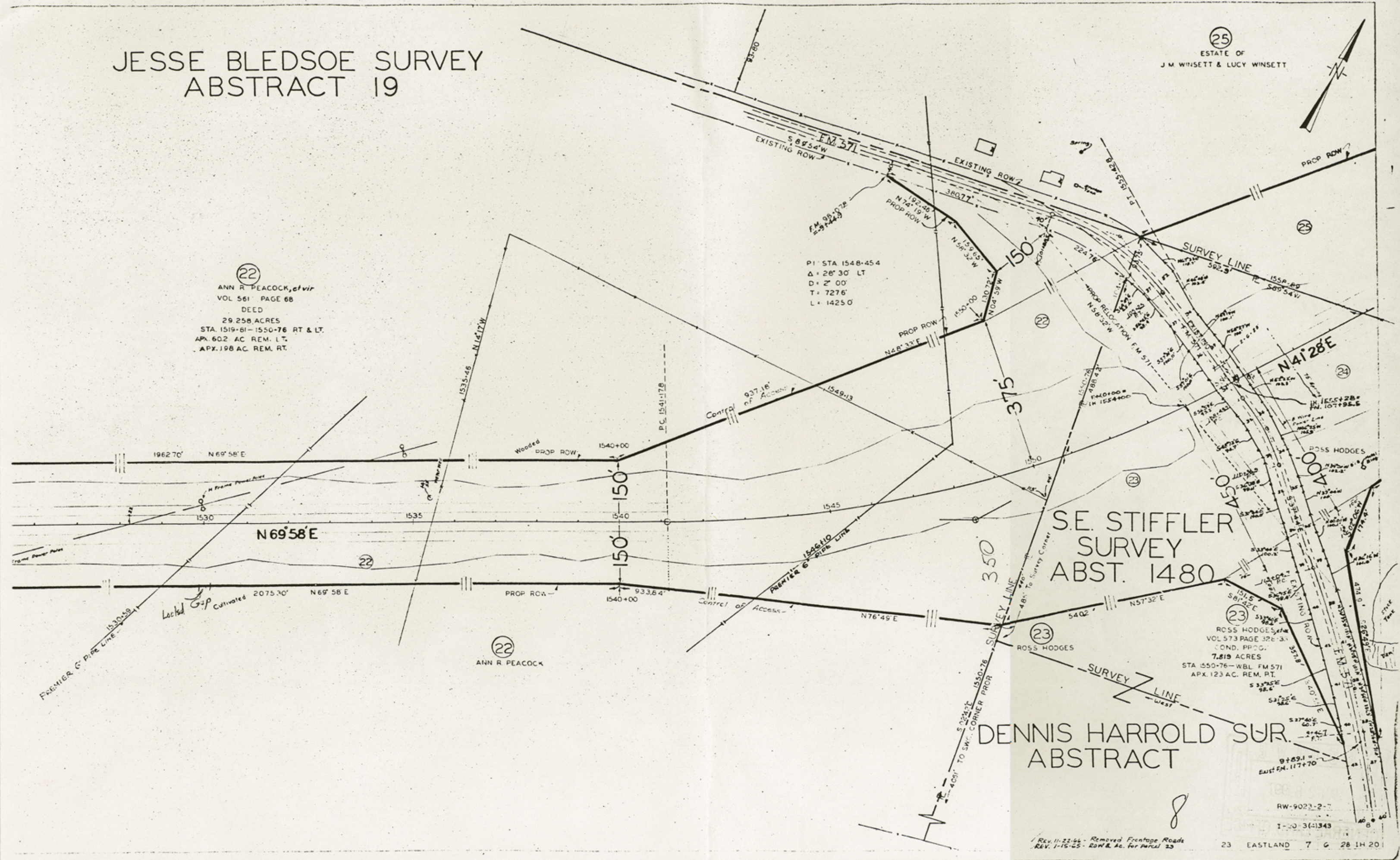
23
ROSS HODGES et al
VOL 573 PAGE 326-31
COND. PROC.
7.819 ACRES
STA. 1550-76 - WBL FM 571
APX. 123 AC. REM. RT.

22
ANN R PEACOCK

REV. 11-22-66 - Removed Frontage Roads
REV. 1-15-65 - ROW & 46. For Parcel 23

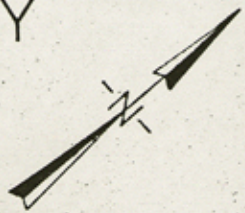
23 EASTLAND 7 6 28 1H 20

Counter 21433



JAMES LEHEA SURVEY ABSTRACT 360

NANCY MOORE SURVEY ABSTRACT 1322

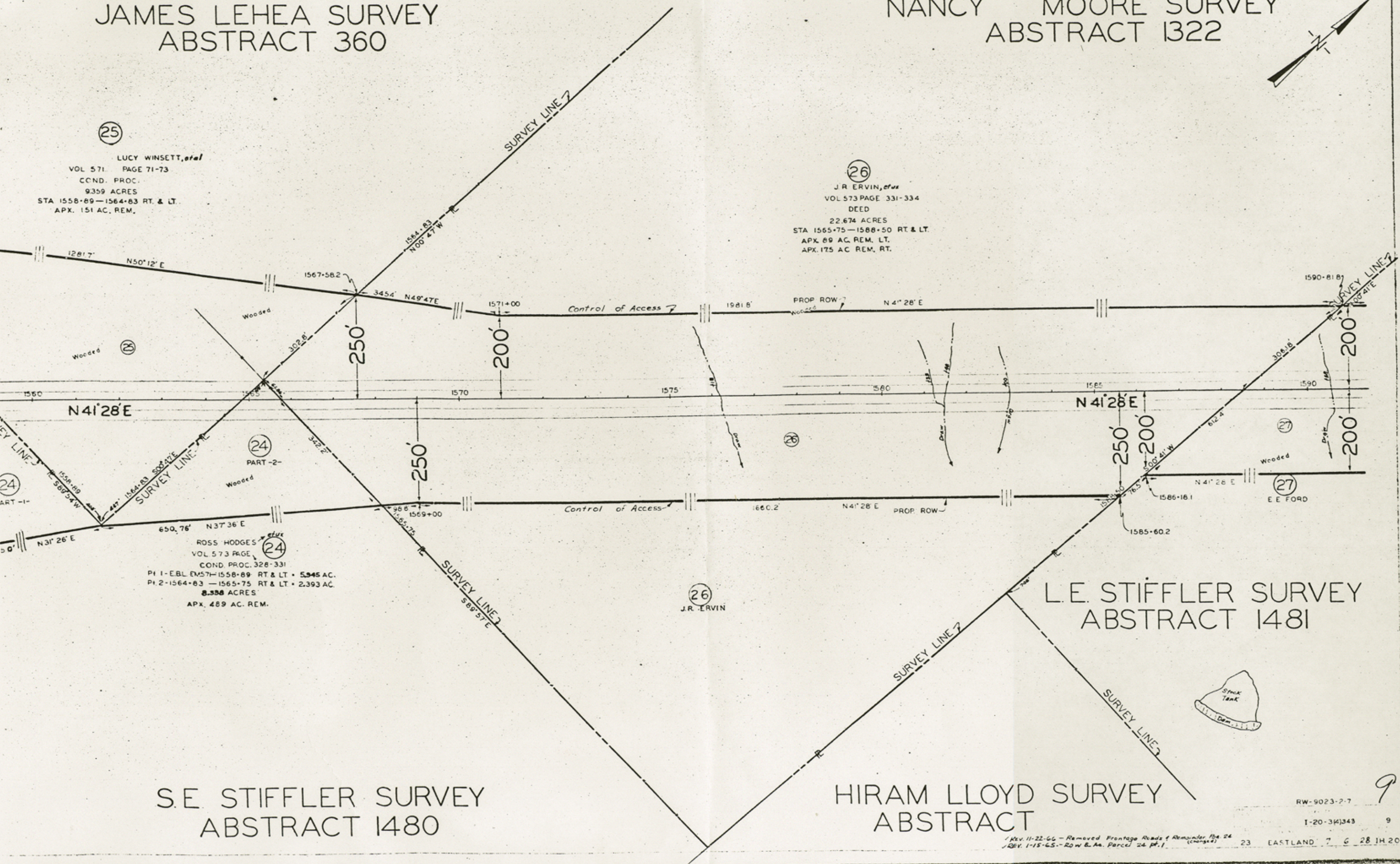


25

LUCY WINSETT, *et al*
VOL 571 PAGE 71-73
CCND. PROC.
9359 ACRES
STA 1558+89-1564+83 RT. & LT.
APX. 151 AC. REM.

26

J.R. ERVIN, *et ux*
VOL 573 PAGE 331-334
DEED
22.674 ACRES
STA 1565+75-1588+50 RT. & LT.
APX. 89 AC. REM. LT.
APX. 175 AC. REM. RT.



24

PART-1-

ROSS HODGES, *et ux*
VOL 573 PAGE 328-331
COND. PROC.
PI 1-E.B.L. 1557+1558-89 RT. & LT. 5.945 AC.
PI 2-1564+83 -1565+75 RT. & LT. 2.393 AC.
8.338 ACRES
APX. 489 AC. REM.

S.E. STIFFLER SURVEY ABSTRACT 1480

26
J.R. ERVIN

L.E. STIFFLER SURVEY ABSTRACT 1481

HIRAM LLOYD SURVEY ABSTRACT

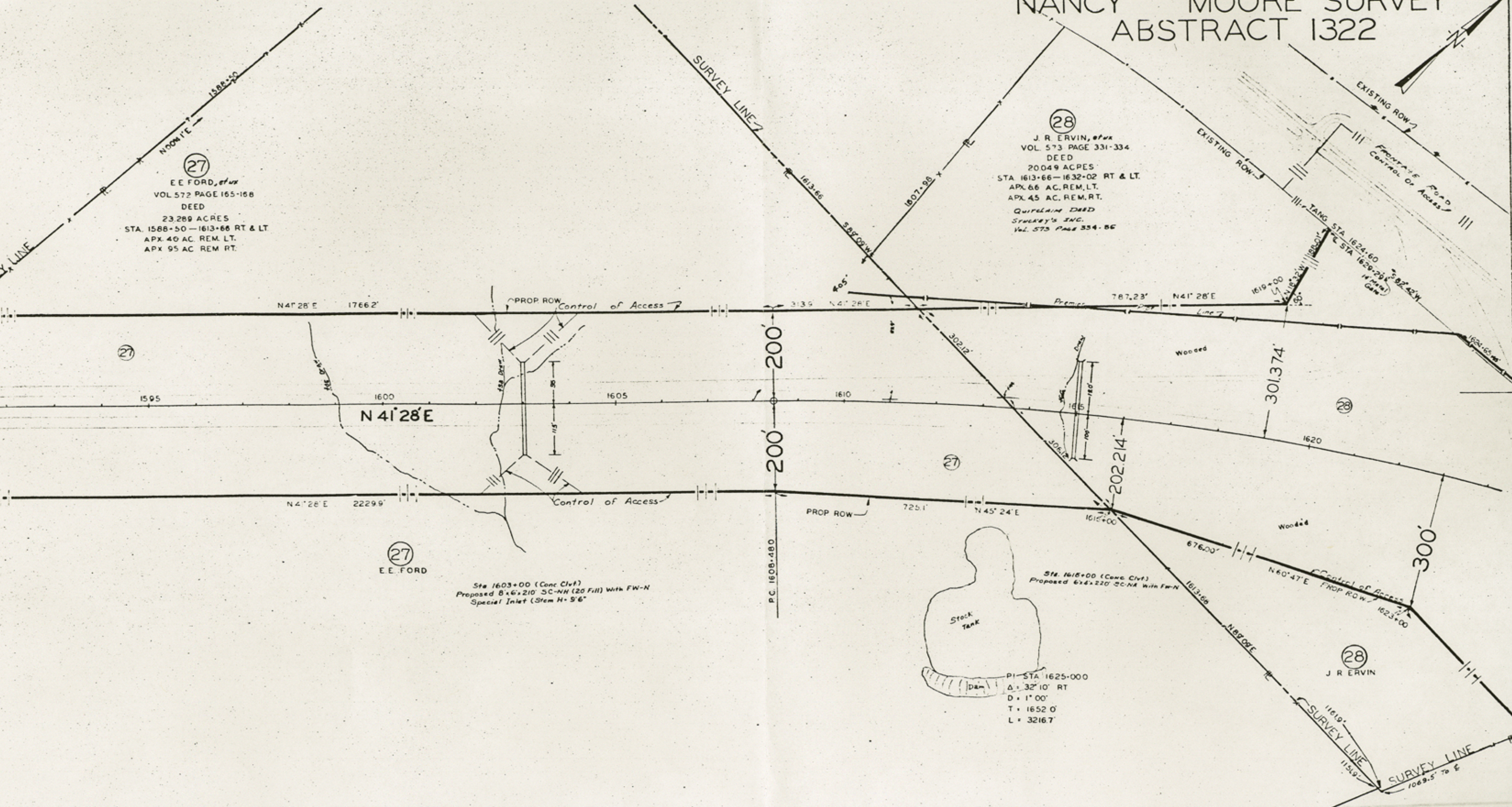
RW-9023-2-7

I-20-34343

REV. 11-22-66 - Removed Frontage Roads & Remainder 1/4 Sec 24 (Change 2)
REV. 1-15-65 - Row B. An. Parcel 24 P. 1
23 EASTLAND 7 6 28 1H 20

Counter 21639

NANCY MOORE SURVEY ABSTRACT 1322



L.E. STIFFLER SURVEY ABSTRACT 1481

REV. 11-22-66 - Change Acc Line, delete Front Rd
REV. 8-10-66 - ACC. LINE & FR. RD. PAR 27 & 28

23 EASTLAND 7 6 28 AM '20

10
1-20-3(4)343 10

Counter 21635

NANCY MOORE SURVEY ABSTRACT 1322



END ACCOUNT 9023-2-7
STA. 1640+52.8
END PROJECT 1H 20-3(4)
1H 20-STA. 1666+180
PROJ. I-20-3(12)349
LINE BEARING EQUATION
N73°38'E BACK=N73°46'E AHEAD
(+1666+20 proj. IN 673(3))

(31)
H.D. BUNN, ET UX
VOL. 572 PAGE 87-89
DEED
0.564 ACRES
STA. 1632-03-1645+246 LT.
APX. 455 AC. REM. LT.
CARRAH STEPHENS NORTON

(30)
CARRAH STEPHENS NORTON
VOL. 571 PAGE 342-344
DEED
13.204 ACRES
STA. 1632-03-1648+00 RT.
APX. 128 AC. REM. RT.
APX. 38 AC. REM. LT.

WILLIAM GRAHAM SURVEY ABSTRACT 141

REV. 4-15-68 - Eliminate 29-A
REV. 2-22-68 - PARCEL 29-A
REV. 11-22-66 - Acc. Line & FR. RD. PAR. 28 & CURV. STA. 1645+
REV. 8-10-66 - ACC. LINE & FR. RD. PAR. 28
REV. 4-20-65 - ADD REM. LT. PAR. 30
REV. 3-25-65 - ROW CHANGE PAR. 31
REV. 3-24-65 - ADD FR. RD. CHANGE ACC. LINE
ADDED BURNEASEMENT
(REM. AC. PAR. 31 CHANGED)
ADDED EL. LT. #27-00
REV. 2-26-65 - OWNER CHANGE PAR. 31
REV. 2-10-65 - OWNER CHANGE PAR. 31
REV. 12-1-64 - ADD TOP. PAR. 30

RW-9023-2-7
1-20-3(4)343
23 EASTLAND 7 6 28 1H 20

999
941

Counter 21636

