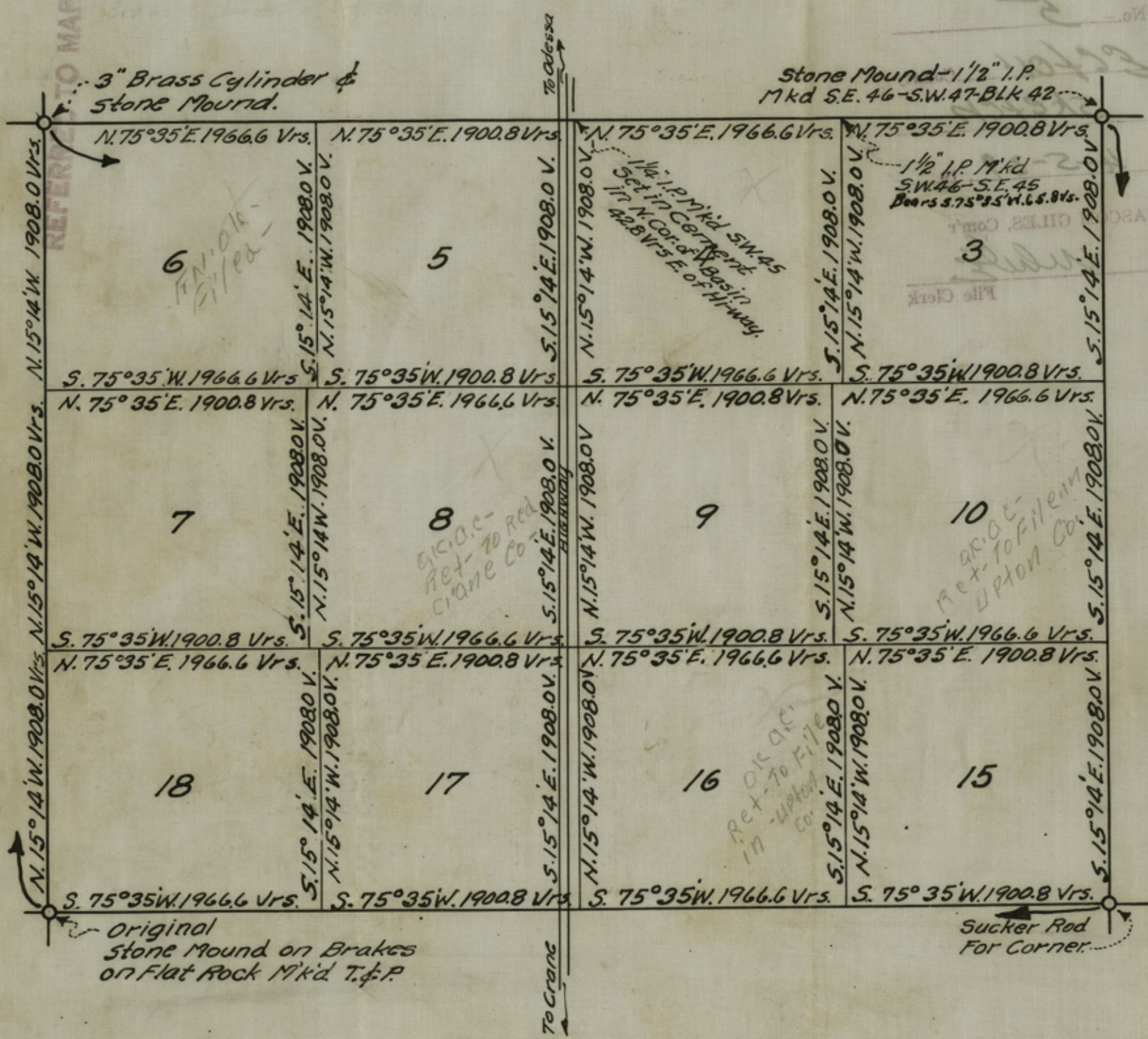
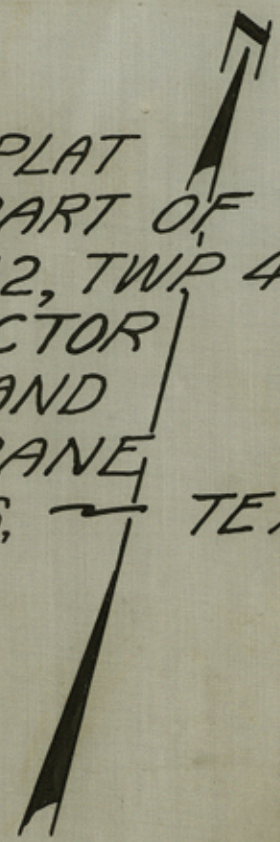


RECEIVED

APR 4 - 1939 366



PLAT
OF PART OF
BLOCK 42, TWP 4 S.
ECTOR
AND
CRANE
COUNTIES, TEXAS.



I, F.W. Estill, of Winkler County, Texas, hereby certify that the plat hereon, with its corners, boundaries and markings, both natural and artificial, are true and correct as located by me on the ground.

This the 16th day of March, A.D. 1939.

F. W. Estill
State Licensed Land Surveyor
County Surveyor, Winkler County, Texas.

SURVEYOR

File No. - 5

1011 County
sketch

Filed 4-5-39, 1939

BASCOM GILES, Com'r

White
File Clerk

PLAT
OF PART OF
BLOCK 45, TWP A 2
ECTOR
AND
CRANE
COUNTIES,
TEXAS.

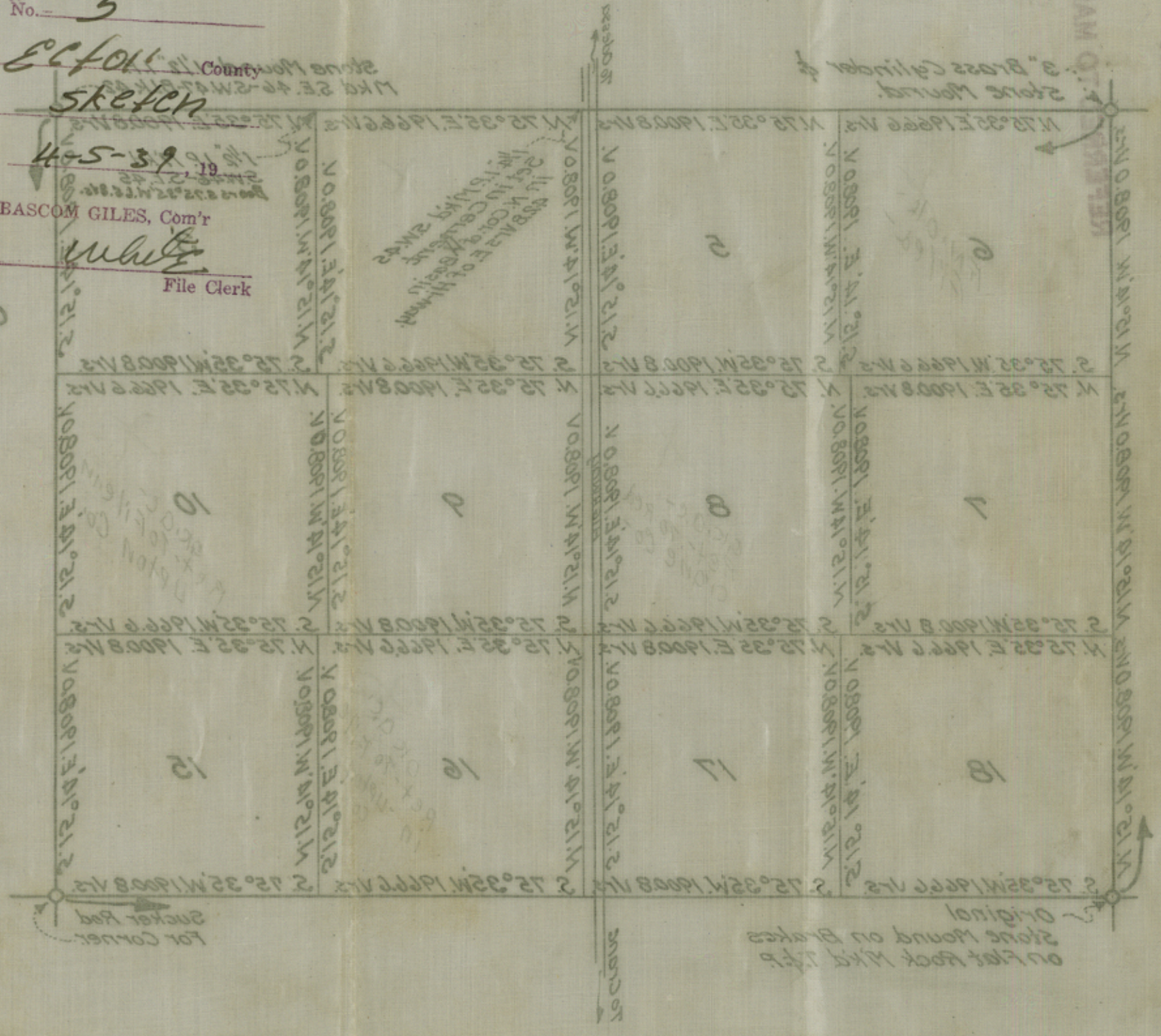
I, F. Westall, of Winkler County, Texas,
hereby certify that the plat hereon
with its corners, boundaries and mark-
ings both natural and artificial, are
true and correct as located by me
on the ground.

This the 1st day of March, A.D. 1939

State Licensed Land Surveyor
County Surveyor, Winkler County, Texas



County 21638



6388 - 1838
JAC

RECEIVED