

I J B Reeves Depty Surveyor of Edwards County Texas, do hereby certify that the following connections with survey N^o 44 M E P & P R R Co and Survey N^o 18 C T R R Co were made by me while county Surveyor of Edwards County Texas as follows -

In Feby 1886 with J L Kittinger and F M York as chain carriers

Beginning at the South Corner of Survey N^o 44 M E P & P R R Co. @ Stone Mound from which Thence East - 17100 vs to the N. E. Cor of Sur N^o 25. Block E H E & W T R R Co Thence South 11400 vs to S E Cor of Sur No 80 Block E N E & W T R R Co. on the deer or road. 460 vs. from its junction with the old Military road

Thence South 1257 vs to N. W. Cor of Block N^o 4. B S & F

Thence S 65 E 11400 vs to N E Cor of said Block N^o 4. B S & F

Thence S 25 W 7600 vs to S W Cor of Sur N^o 1 G W T & P R R Co. (Bl N^o 5) @ Stone Mound about 400 vs East of the Mees River and N 8 E 468 vs from a point on North line of Survey N^o 51 Bl I G W T & P R R Co. 530 vs S 85 E from it - N W Cor from which a cedar bush 4th in dia brs S 8 W 14 vs. Another brs S 77 E 17 vs

Thence S 65 E 7600 vs to the S E Cor of Sur N^o 7. Block N^o 5. G W T & P R R Co @ Stone Mound from which a cedar

19
5
95
19
6
11400

G2

Counter 21687

in branch lrs North 30 West - 50 vs

Also in Oct-1886, with
J. R. Cox and W. P. W. Holmes as chain carriers

Beginning at - the S. E. Cor of
Survey No. 4 Bl. 5 - GWS & PRR Co.

Thence East - 14640 vs and South
5165 vs. to the S W Cor of Survey No. 18

C T P R Co a Stone M^d from which a

S. O. 10 in dia lrs S 55 W 5 1/2 DO 10 in dia

lrs S 64 W 4 vs

Bearings marked \equiv

J. T B Reeves Deputy Surveyor of Edwards
County Texas do hereby certify that the
foregoing survey was actually made
on the ground and that the bearing
Marks and Corners are true and
correctly described

July 21st 1887

J T B Reeves

Deputy Sur Edwards Co Tex

Filed in my office for record on the 22nd day of
July 1887 and recorded some day in Vol 1
on pages 60 & 61 in Book of private surveys
of Edwards County Texas

W P W Holmes

County Sur Edwards Co Texas

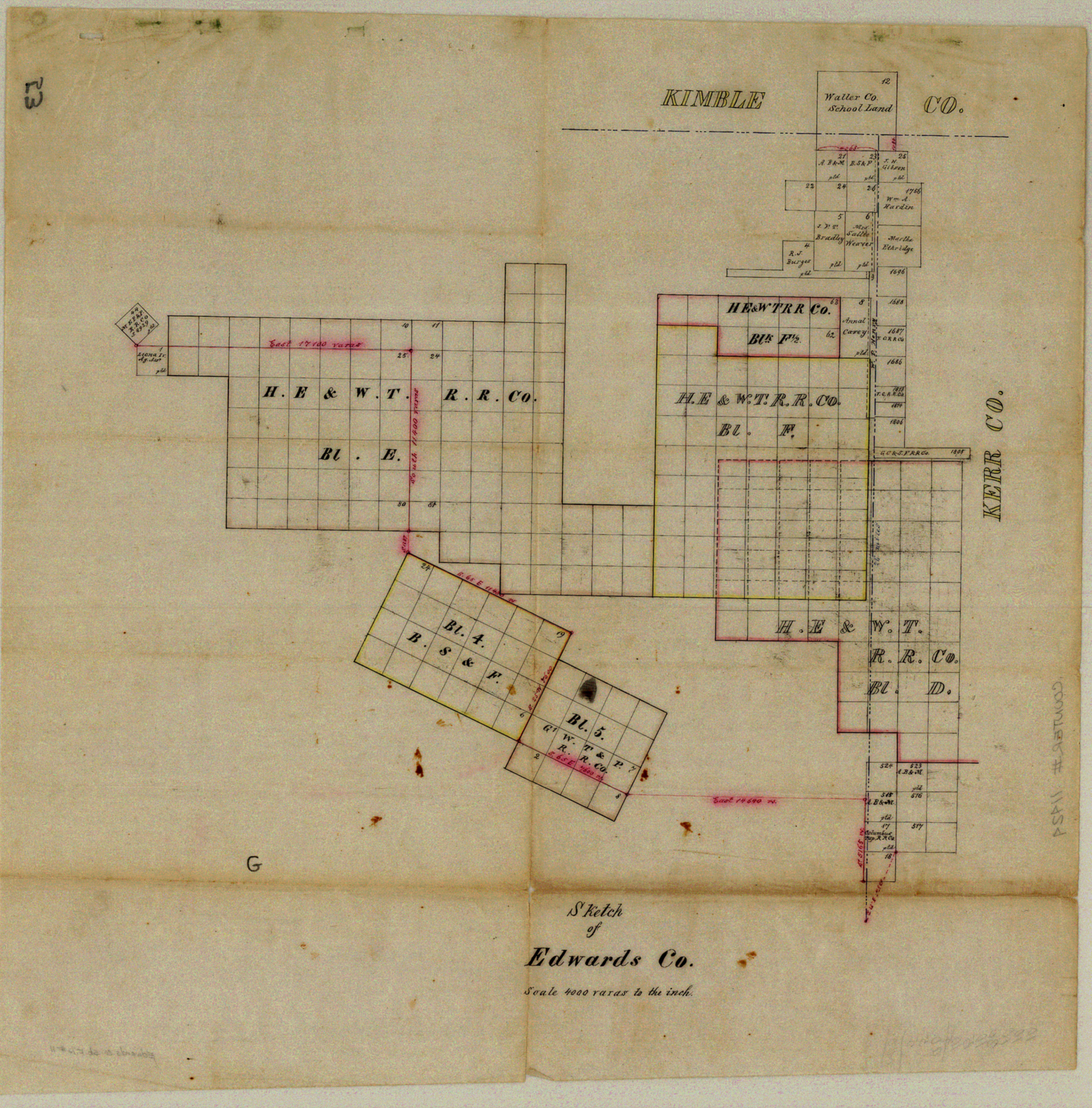
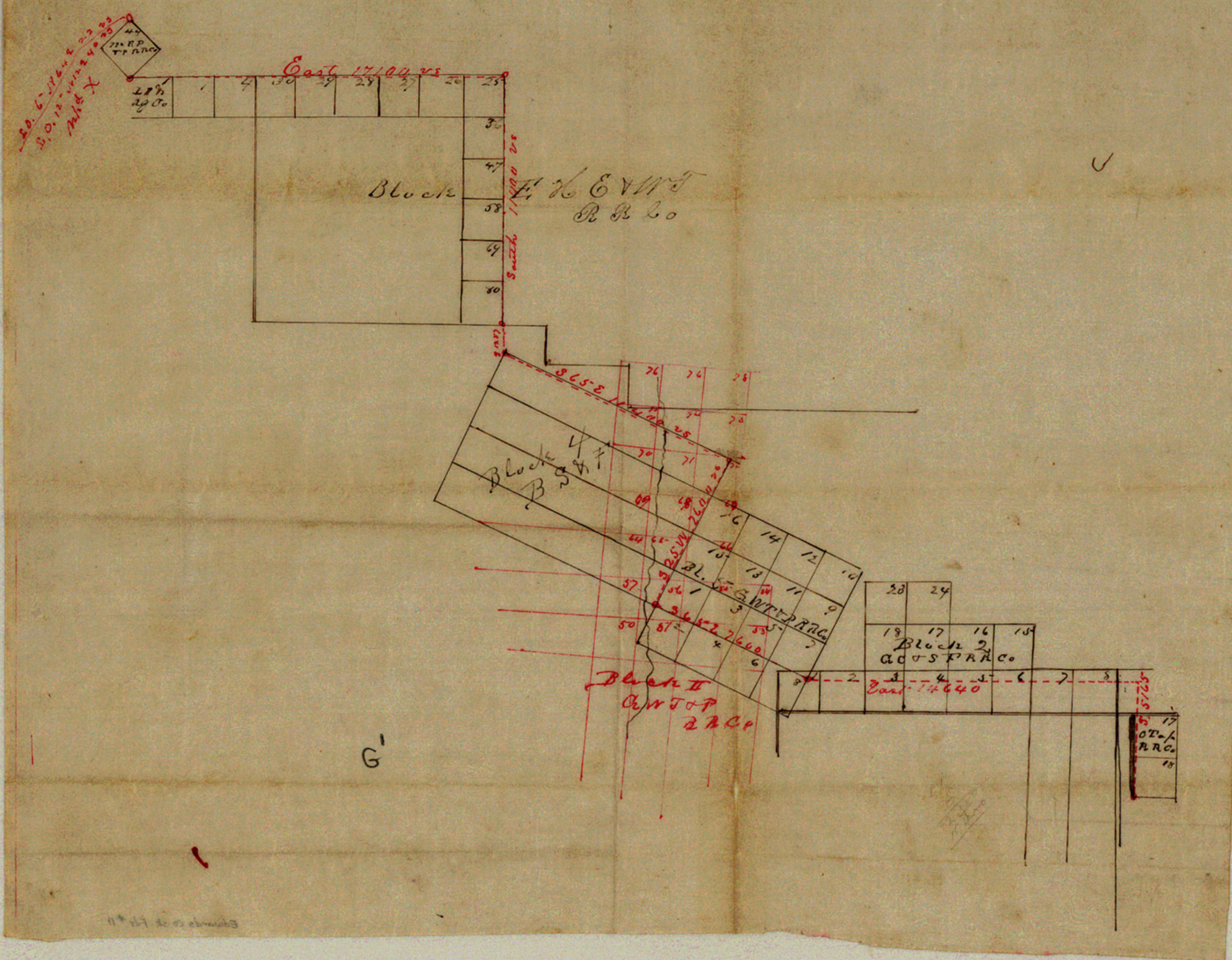
~~11~~
Sketch ~~11~~ #11
Fidwards Co.

Connecting line from
the South corner of Sec. 44
M. & P. Ry. Co. S-8929
on South Lane to the
S.W. corner of Sec. 18
Columbus Tap Ry. Co.
S-5645 on Rio Trio Co.

Surveyed July 1886 by
T. B. Reeves Co. S. E. Co.

Filed July 28/87
R. C. Shull
Chief Clerk

Counter 21689



SKETCH FILE No. 11
 COUNTY EDWARDS

Sketch
 of
Edwards Co.
 Scale 4000 varas to the inch.

PSA # 1152000