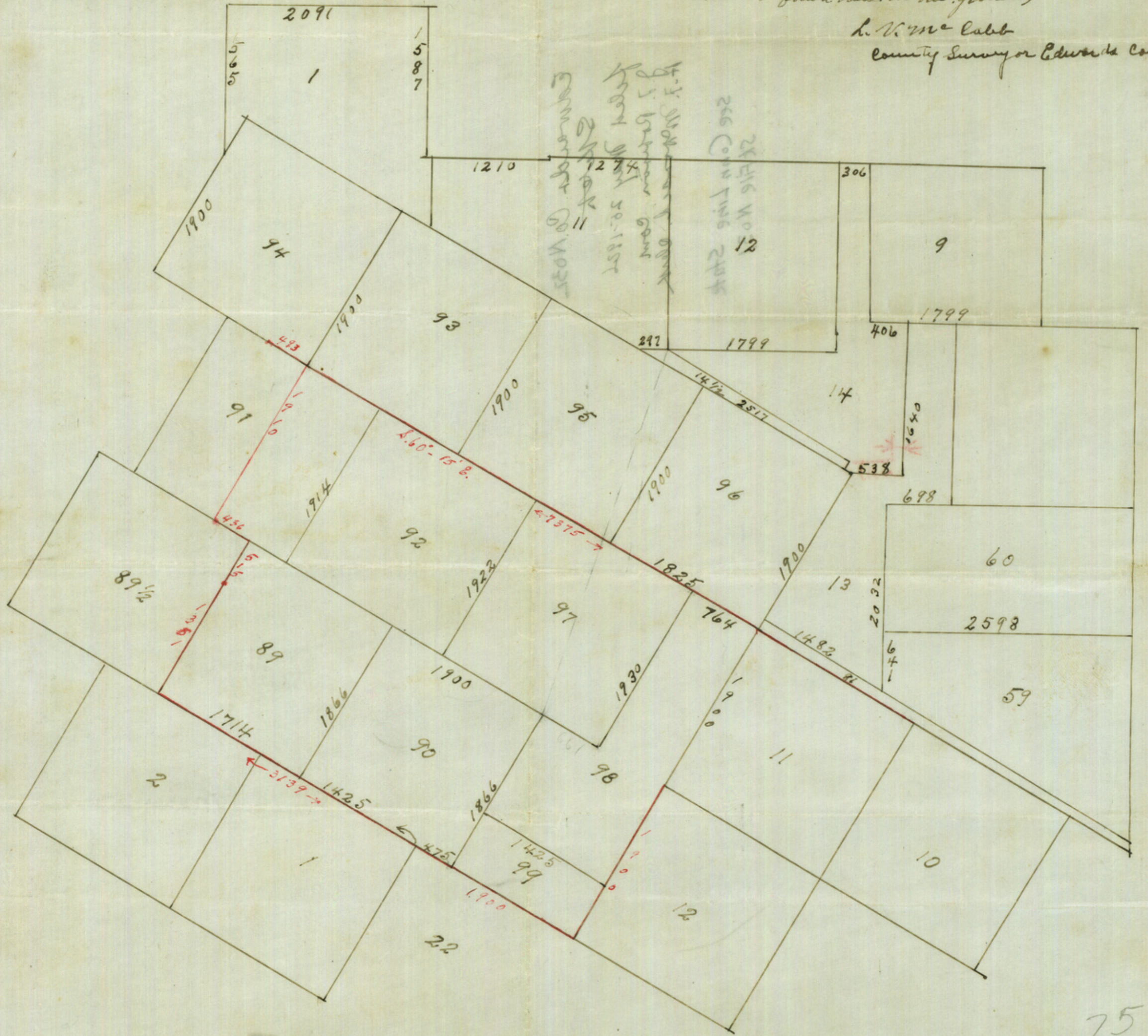


I, L. V. McCall, County Surveyor Edwards County, do hereby certify that this sketch is made to represent the surveys shown to conform to conditions as I found them on the ground.

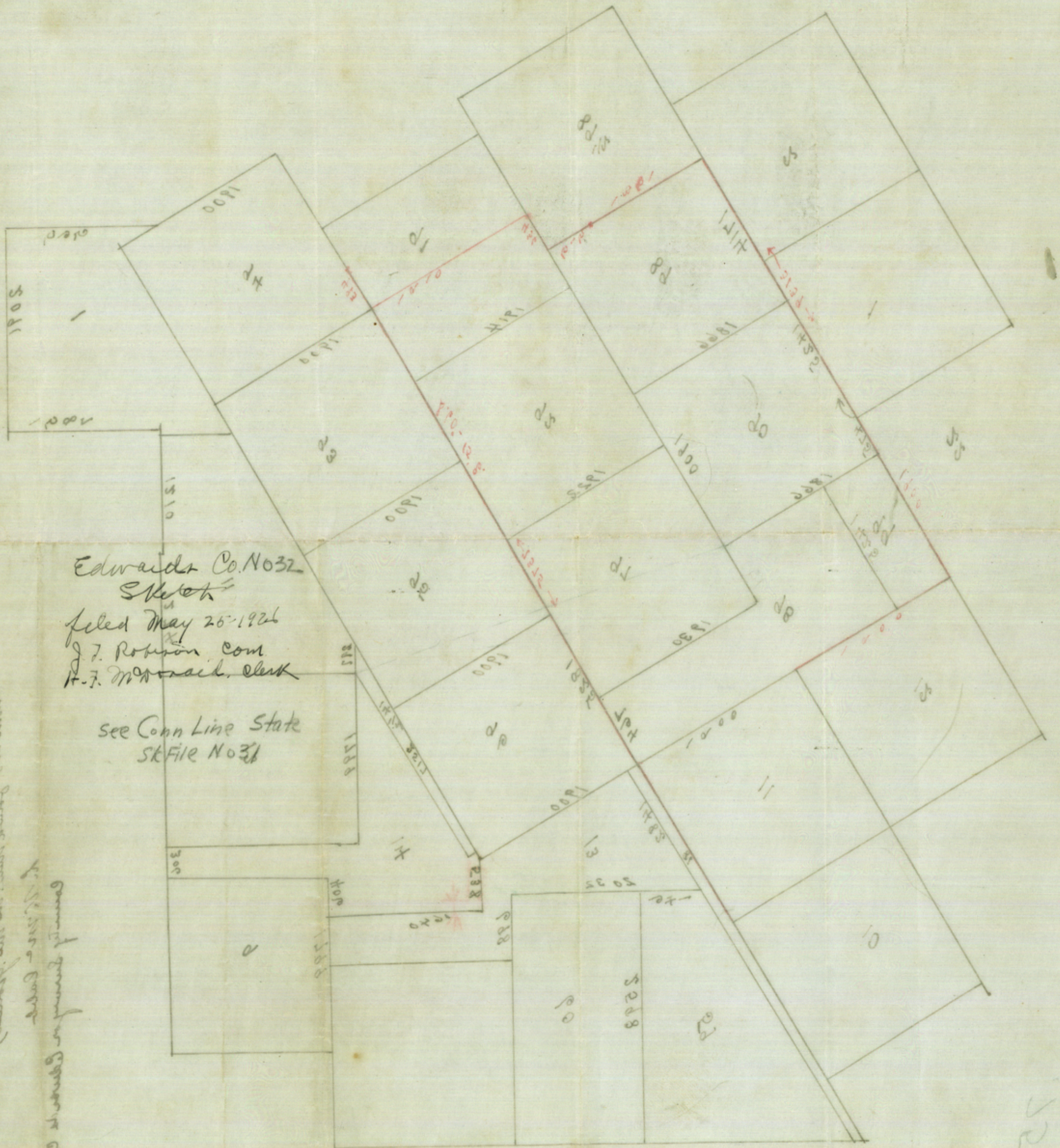
L. V. McCall
County Surveyor Edwards County.



75

21765 returned

Counter 21765



Edwards Co. No 32
 Sketch
 filed May 26-1926
 J. J. Robinson Com
 H. J. McNeill, Clerk

see Conn Line State
 sk File No 31

Reference to the survey map on the drawing
 to ascertain the number of acres to which the
 county is entitled. The line between the
 2 1/2 Sec. 12. E. and the county boundary
 is shown in red ink.

52

Counter 21766

Counter 21762