

L.O. D-454

CITY LOTS
ACREAGE
SUBDIVISIONS
RANCHES
MAPPING & FIELD NOTES

HILMAR J. KOCH
Licensed State Land Surveyor
P. O. BOX 246 — PHONE 62F15
D'HANIS, TEXAS

FARMS
BOUNDARY DISPUTES
FHA AND GI
TITLE AND LOAN
SURVEYS

June 7th, 1965

File No. 51
Edwards County
Sketch File
Filed June 16 1965
JERRY SADLER, Com'r
By V. E. Stuyvesant

Hon. Jerry Sadler
Commissioner
General Land Office
Austin, Texas

Dear Sir:

With reference to work done on the ground, for Mr. Robt. H. Ray, on Surveys No. 55 and No. 56, S. P. R. R. CO, in Edwards County, I beg to submit the following report.

On April 14th, 1965, Mr. R. J. Jernigan, a life long resident of the area, took me to the S. W. corner of Sur. No. 30, S. P. R. R. CO, where we found the bearings called for in the Original Surveyor's Field Notes, said survey having been made in 1874, under direction of L. C. Navarro, District Surveyor of Bexar District; the bearings, an Elm now 30" diam. brs. S 35° 40' W 3.5 vrs; and a Live Oak now 30" diam. brs. S 49° E 13.5 vrs; both trees alive and plainly marked X. I drove an iron hub and set a large rock mound, to correspond to the original corner, which is on the east bank of the Middle Prong of the Nueces River.

I then ran line East on a variation of 9° 45' East, measured in part with 50 vara tape, and in part shot stadia, and at 2042 vrs. found an old large rock md. on line, on top of a mountain, the S. E. corner of the West ½ of Sur. No. 30, from which another rock md. brs West 33.0 vrs. and from 2nd. md. a Cedar 6" brs. S 43° E 25.8 vrs; another Cedar 12" brs. S 41° E 28.4 vrs; (trees dead but standing and plainly marked X ; These trees marked on May 20th, 1920 by J. F. Winans and are called for in the Patent issued on Jan. 19th, 1927.

Counter 21800 D'

From the S. E. corner of the West $\frac{1}{2}$ of Sur. No. 30, I ran East and measured and at 216.1 vrs. found an old rock md. on line, which later proved to be the N. W. corner of Sur. No. 55, S. P. R. R. CO,

From this point I ran East and measured and at 1637.8 vrs. found an old rock md. on the south side of a mountain, near the top, the S. E. corner of the East $\frac{1}{2}$ of Sur. No. 30, also patented on Jan. 19th, 1927, from which an 8" Cedar brs. N 73° E 23.6 vrs, another Cedar 10" brs. N 14° W 40.6 vrs. The first tree is dead and fallen but plainly marked X, the second is dead but standing, with marks plainly visible. In J. F. Winans report dated Oct. 16th, 1937, he either marked or found these trees on Aug. 16th, 1928, as they are not called for in the Patent of the East $\frac{1}{2}$ of Sur. No. 30.

From the S. E. corner of the East $\frac{1}{2}$ of Sur. No. 30, I ran line North and at 39.0 vrs. found a scattered old rock md. which proved to be the S. W. corner of Sur. No. 8, Parcel C, patented to O. L. Lackey, on Aug. 16th, 1940. There are no bearings called for in the Patent of Sur. No. 8, for this corner, however, in the Field Note Records of Edwards County, some one called for a Cedar 10" N 55° 30' W 15.1 vrs; this area now used as a road, the tree probably having been dozed out.

Thence from the S. W. corner of Sur. No. 8, Parcel C, I ran North and measured in part with a 50 vara tape, and in part ~~with~~ shot stadia, the terrain being very rough, I found several small rock mds. and old cutting on line, and at 972 vrs. found an old rock md. from which a Live Oak 12" brs. N 17° W (Winans Field Notes call for N 12° W) 36.6 vrs. tree alive and plainly marked X, the other bearing a Live Oak 6" brs. S 50° 30' E 16.0 vrs. is gone. The Patent of Sur. No. 8, Parcel C, calls to begin at this corner, the N. E. corner of Sur. No. 30, however, the trees are not mentioned in the Patent.

I then ran course East from this corner, and at 122.0 vrs. found an old scattered rock md. the N. E. corner of Sur. No. 8, Parcel C, and marked new bearings as shown on Plat.

From the N. E. corner of Sur. No. 8, Parcel C, I ran course East and measured 434.0 vrs. (which is the difference in distance called for on the north line of Sur. No. 30, and the south line of Sur. No. 35, S. P. R. R. CO,

after allowing 122 yrs. for the width of Sur. No. 8) and set rock md. for the S. E. corner of Sur. No. 35, with new bearings shown on Plat.

From this corner I ran course North and measured 978.4 yrs. and set temporary md. in line with old fence bearing west, and verified by Mr. Archie Lee Welch , the owner of Sur. No. 35, as being the north line of that Survey, as surveyed by Ned Bishop, County Surveyor of Edwards County, between 1940 and 1950.

On March 29th, 1965, I found an original bearing called for at the N. E. corner of Sur. No. 56, a Cedar 8" brs. S 16° 30' W 63.0 yrs. tree alive and plainly marked X, Thence ran course N 85° 00' W and measured 1277.4 yrs. and set rock md. for a corner, this point being on an east -west line with the north terminal of the 978.4 vara line ran on the east line of Sur. No. 35

On April 15th, 1965, I ran course East from the N. E. corner of Sur. No. 35, and measured 28.1 yrs. to tie into the west terminal of the 1277.4 vara line run on March 29th, to close the north end of Sur. No. 56; then marked bearings at the N. E. corner of Sur. No. 35, as shown on Plat.

On April 27th, 1965, I began at an old rock md. on the west bank of the East Prong of the Nueces River, verified by Mr. Neal Jernigan, a life long resident of the area, and the present owner of Sur. No. 54; as being the original S. E. corner of Sur. No. 55. The original bearings are gone, but found a Live Oak 24" diam. plainly marked X brs. S 61° 15' W 39.0 yrs. another Live Oak 8" diam. same mark, brs. S 72° 30' W 51 yrs. (I would estimate these trees were marked approx. 20 years ago.)

From this corner I ran course N 85° W and measured along old fence line, and at 3581.5 yrs. found an old rock md. , with a very old dead Cedar 10" diam. mkd. X brs. N 53° 45' W 16.2 yrs. I then ran course West and measured 1041.0 yrs. to an old rock md. which, I believe, is the S. W. corner of Sur. No. 55. From this corner turned a Right Angle off line running West 1041.0 yrs.; ran course North and measured 896.2 yrs. to the old rock md. which I found on April 14th, at a point in the south line of Sur. No. 30, and 216.1 yrs. East of the S. E. corner of the West ½ of Sur. No. 30. The original Field Notes of Sur. No. 55, call for adjoinder on the south line of Sur. No. 30. I re-built this mound and marked new bearings as shown on Plat, for the N. W. corner of Sur. No. 55.

On April 28th, 1965, I began at the S. E. corner of Sur. No. 55, and ran out the courses and distances as called for in the original Field Notes of

D-454

Sur. No. 55 and Sur. No. 56. I would like to take the liberty to state that I believe these courses and distances are in error, as I took great pains to run these courses and distances, and at times I ran into the River, and at times the corners would fall 300 vrs. from the river, so that after the last course and distance was run, I was at a point S 47° W 164.9 vrs. from the original N. E. corner of Sur. No. 56. I therefore proceeded to run the courses and distances along the present west bank of the East Prong of the Nueces River, as shown on the Plat.

On April 29th, 1965, I began at the S. W. corner of Sur. No. 8, Parcel C, ran course S 85° E and measured and at 122.0 vrs. found old large fock md. in the head of a deep draw, from which a Cedar 10" brs. S 66° E 2.0 vrs.; the S. E. corner of Sur. No. 8, Parcel C. Then ran course S 85° E, parellel with the south line of Sur. No. 55, and measured a total of 2626.8 vrs. from the S. W. corner of Sur. No. 8, to a point on the west bank of the Nueces River set rock md. and marked bearings as shown on Plat, for the N. E. corner of Sur. No. 55. The ~~the~~ original bearings are gone.

After calculating the total acreage in Sur. No. 56, which was 662.94 acres, we calculated ^{1/2} the acreage in the north part, and ^{1/2} the acreage in the south part, with a line running S 85° E. Then prorated the excess distance per vara in Patent notes of the south line of the south ^{1/2}, giving a distance of 688.4 vrs. for the south line of the S. E. 1/16 of Sur. No. 56; thence North sufficient distance to make 41.43 acres, (prorated equally) with the north line running S 85° E, thence downstream with the west bank of the East Prong of the Nueces River.

For File 39818, having North and South lines established, calculated 41.43 acres with the west line running North. The South ^{1/2}, having a west side distance of 803.6 vrs. , divided into four equal parts, gave 200.9 vrs. for the S ^{1/4} of the S. W. ^{1/4}, prorating the excess distance on the south line gave us 1816.4 vrs. The west line of the S. E. 1/16 runs North ^{449.2} ~~499.2~~ vrs. to the south line of the N. E. ^{1/4} of the S. E. ^{1/4}, thence with its line N 85° W sufficient distance to make 82.87 acres, by using course N 85° W and tying into the 200.9 vara point on the west line of Sur. No. 56.

File 62982, is the remaining area of the south ^{1/2} of Sur. No. 56, and contains 165.74 acres, being its prorated amount of the entire Survey.

File No. 51

Edwards County
Sketh File

Filed June 16 1965

JERRY SADLER, Com'r

By Hilmar Koch

Map & Report

Re: SPRR Co. Sur. 55 & 56

By Hilmar Koch

June 7, 1965

Respectfully submitted

Licensed State Land Surveyor.
Hilmar Koch



This work was done from March 29th, to April 29th, 1965.

the Edwards County Surveyors Records.

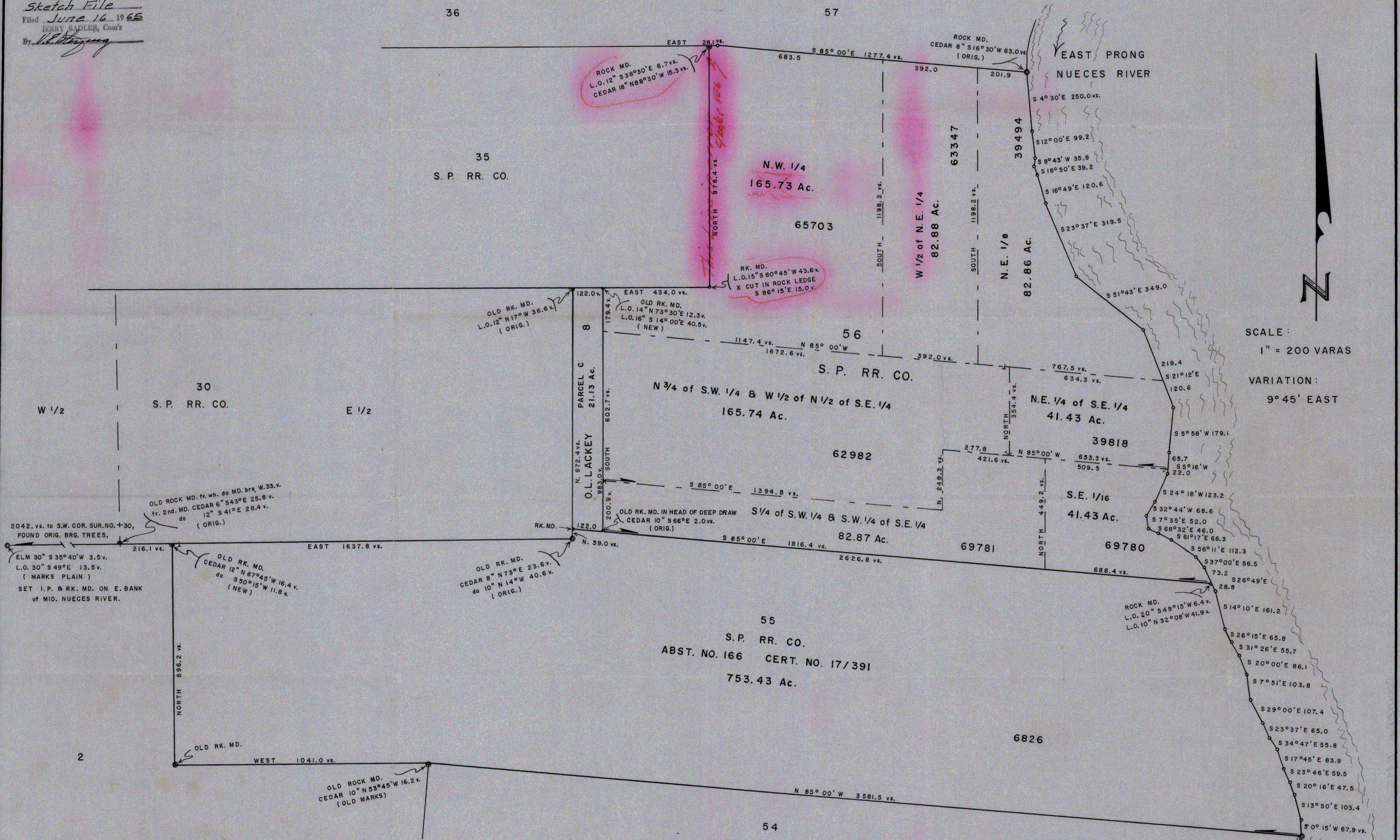
portions of Sur. No. 50, also original plat, copy of which has been filed in the Edwards County Field Note Records, on Sur. No. 52, and the various (7)

Corrected Field Notes herewith submitted, properly referenced to the with the dividing lines running North and South.

the N. E. 1/4; and the N. E. 1/8, would each have the prorated amount of excess, The north 1/2 of Sur. No. 50, was divided so that the N. W. 1/4; the W. 1/2 of

Counter 21805

File No. 51
 Edwards County
 Sketch File
 Filed June 16, 1965
 JERRY SADLER, Com'r
 By Hilmar D. Koch



PLAT SHOWING
 SUR. NO. 8, PARCEL C, O. L. LACKEY, 21.13 Ac.,
 SUR. NO. 55, S. P. R.R. CO., 753.43 Ac., &
 SUR. NO. 56, S. P. R.R. CO., 662.94 Ac., SITUATED
 ABOUT 19 MILES S 30° E OF ROCKSPRINGS,
 EDWARDS COUNTY, TEXAS.
 SURVEYED: MARCH, APRIL, MAY, 1965.

THE STATE OF TEXAS:
 COUNTY OF MEDINA:
 I HEREBY CERTIFY THAT THIS PLAT IS A TRUE
 AND CORRECT REPRESENTATION OF AN ACTUAL SURVEY
 MADE BY ME ON THE GROUND, ON THE DATE GIVEN.

Hilmar D. Koch
 HILMAR D. KOCH
 LICENSED STATE LAND SURVEYOR.
 REGISTERED PUBLIC SURVEYOR, NO. 225.
 D'HANIS, TEXAS. Phone 512 363 7331.

RECORDED IN FIELD NOTE
 RECORDS OF EDWARDS CO.
 TEXAS, IN VOL. 1, P. 56,
 JUNE 9th 1965.



RECEIVED
 JUN 16 1965
 Central Legal Office