

Variation 18° E.

Scale 2000 vs. to the inch.
Situates on the waters of Bee
Creek a tributary of Chambers
Creek about 13 miles S. 34 W.
from Wapahachie.



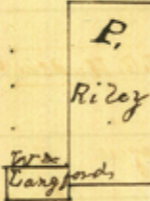
Variation 15° E.

Scale 2000 vs. to the
inch. Situated on the waters
of Mill Creek, about 16 1/2 miles
S. 20 W. from Wapahachie.



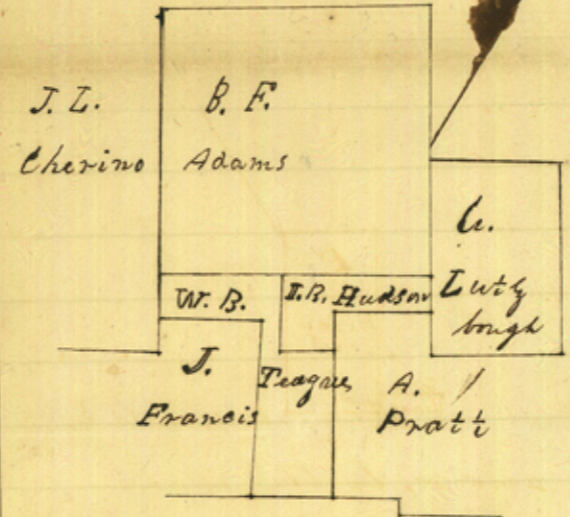
Variation 10° E.

Scale 2000 vs. to the inch.
Situates on the waters of
Richland Creek, about
21 miles S. 15 W. from
Wapahachie.



Variation 10° E.

Scale 2000 vs. to the inch.
Situates on the waters of
Chambers Creek, about 12 miles
S. 40 W. from Wapahachie.



Variation 9° 30' E.

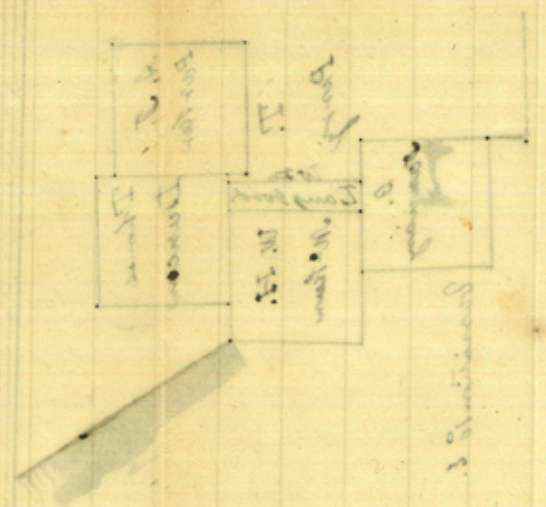
Scale 2000 vs. to the inch.
Situates on the waters of
Mill Creek, about 16 1/2 miles
S. 5 W. from Wapahachie.

I certify that the ~~within~~^{sketches} within are correct
sketches of the surveys therein represented.
Given under my hand December the 9th 1859.

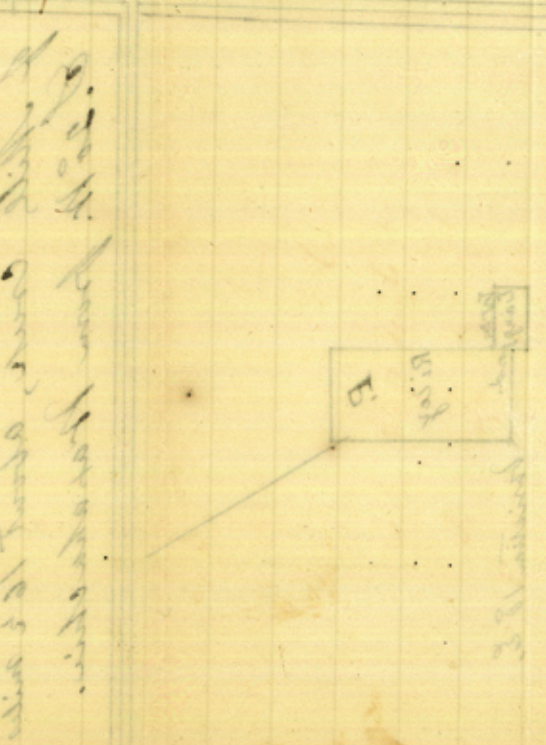
John J. Richardson
Capt. Sur. G. Co.

The above is a copy of the
 original of the same
 as shown to the
 Surveyor General
 of the State of
 Ohio
 on the 11th day of
 the month of
 August 1854
 and is a true and
 correct copy of the
 original as shown
 to the Surveyor
 General of the
 State of Ohio
 on the 11th day of
 the month of
 August 1854

The above is a copy of the
 original of the same
 as shown to the
 Surveyor General
 of the State of
 Ohio
 on the 11th day of
 the month of
 August 1854
 and is a true and
 correct copy of the
 original as shown
 to the Surveyor
 General of the
 State of Ohio
 on the 11th day of
 the month of
 August 1854



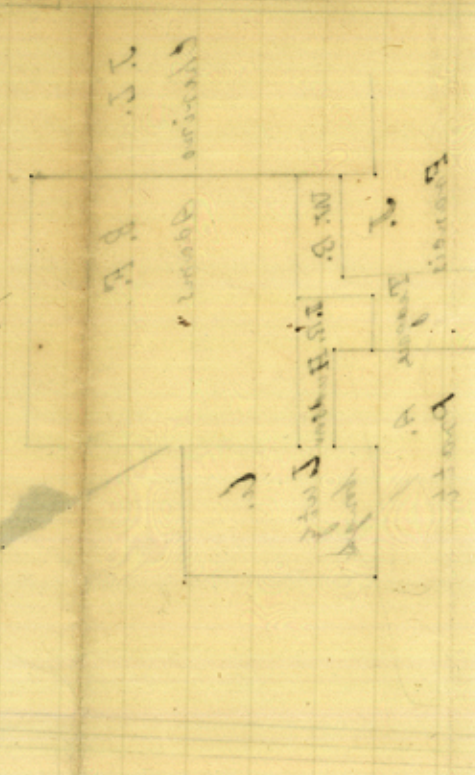
The above is a copy of the
 original of the same
 as shown to the
 Surveyor General
 of the State of
 Ohio
 on the 11th day of
 the month of
 August 1854
 and is a true and
 correct copy of the
 original as shown
 to the Surveyor
 General of the
 State of Ohio
 on the 11th day of
 the month of
 August 1854



The above is a copy of the
 original of the same
 as shown to the
 Surveyor General
 of the State of
 Ohio
 on the 11th day of
 the month of
 August 1854
 and is a true and
 correct copy of the
 original as shown
 to the Surveyor
 General of the
 State of Ohio
 on the 11th day of
 the month of
 August 1854

File 7

Ellis Co.
 Paid January 30/60
 Sundry Sketches.
 John J Richardson.
 Dec. 9, 1859.



The above is a copy of the
 original of the same
 as shown to the
 Surveyor General
 of the State of
 Ohio
 on the 11th day of
 the month of
 August 1854
 and is a true and
 correct copy of the
 original as shown
 to the Surveyor
 General of the
 State of Ohio
 on the 11th day of
 the month of
 August 1854

The Simpson Act & Applet
 4 sets field notes
 Wm B League certificate
 + 1 set field notes, Re-survey
 I R Hudson field notes
 no entry, + no certificate -
 no transfers filed - 7
 Sketches of the 8 surveys
 Forwarded by next mail