

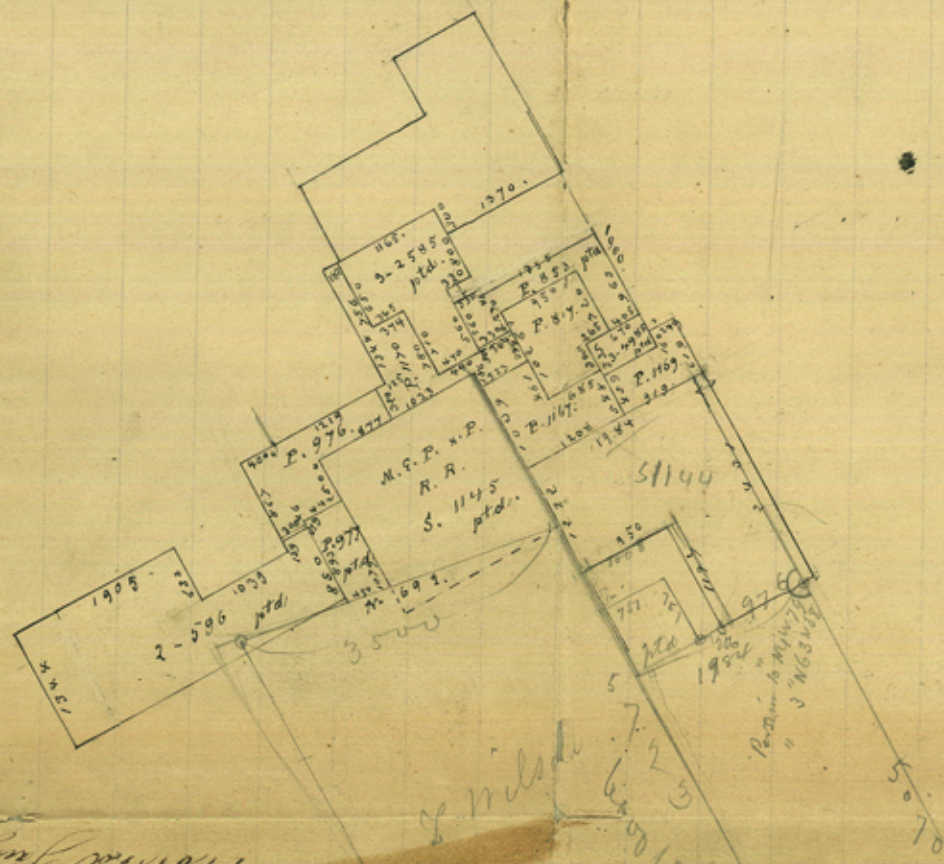
Ellis Co

File 21

Schutz's sk. of Surs. lying
about 18 mi S 45° W. from Wax-
ahachie, - around the
Zacheus Wilson Sur.
1-13-79.

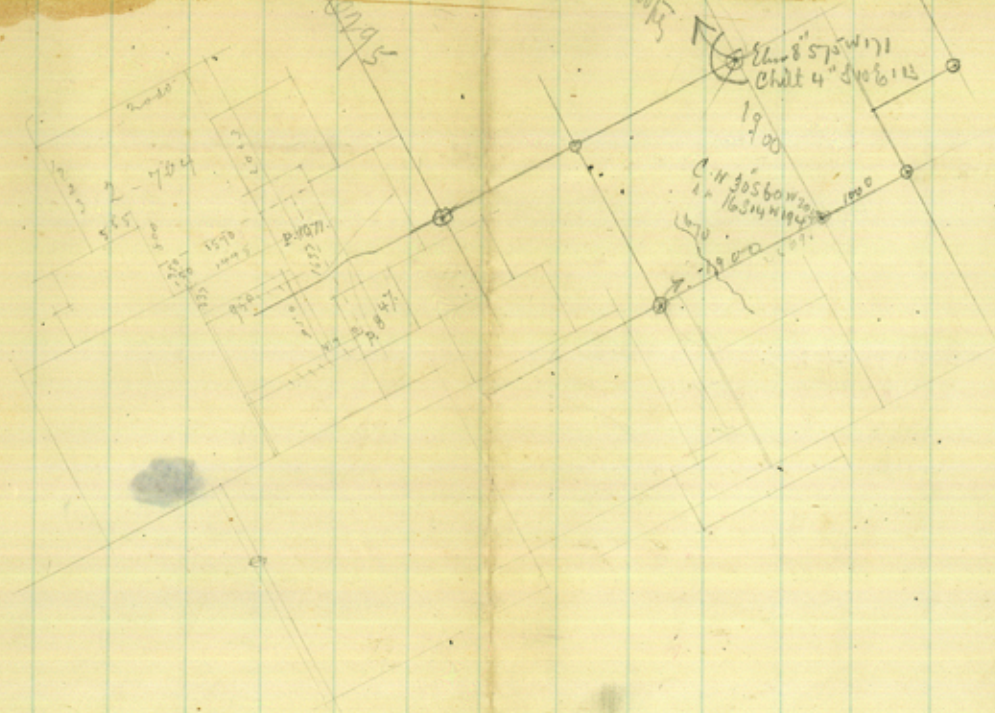
Plotted July 3/19
S. W. 1908

1208
2199
1989
143



Plotted July 3/19
S. W. 1908

S.W.



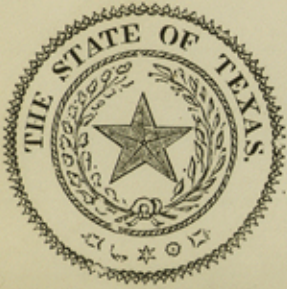
Counter 21879



W. C. WALSH, Commissioner.

RHOADS FISHER, Chief Clerk.

CHAS. W. PRESSLER, Chief Draftsman.



GENERAL LAND OFFICE,

Austin, Texas

1879.

Please pay your postage in full.