

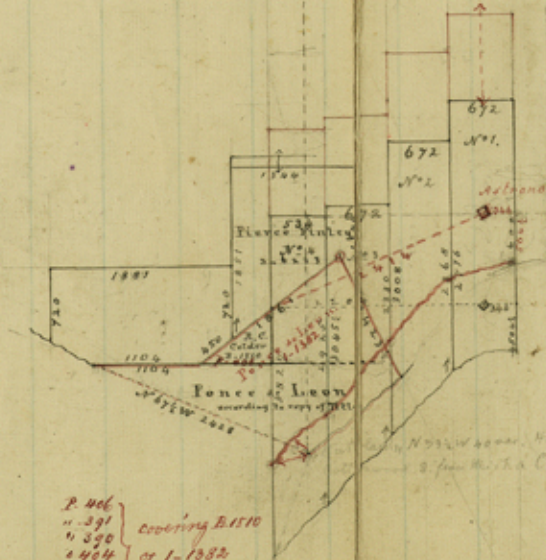
El Paso County. Sketch File 9.

compiled in Office March 1873. Scale 2000 yards to an inch.

Schenck

Mess Hughes

(standard)



N 67 E

N 67 E

N 67 E

Magnetical point. (see surveyors correction of Oct. 28/70)

T. W. W. Burdett

N 67 E 2000 yds. Hughes Oct 1/69  
to fence the C. to SSE of (Fence & Leon field) Feb 1/69

- P. 406
  - " 391
  - " 390
  - " 404
  - " 407
  - " 405
- covering B. 1110  
of 1-1882

Counter 21970

File 9. ~~III~~

El Paso County.

Astronomical point  
near Fort Bliss.

Counter 21971

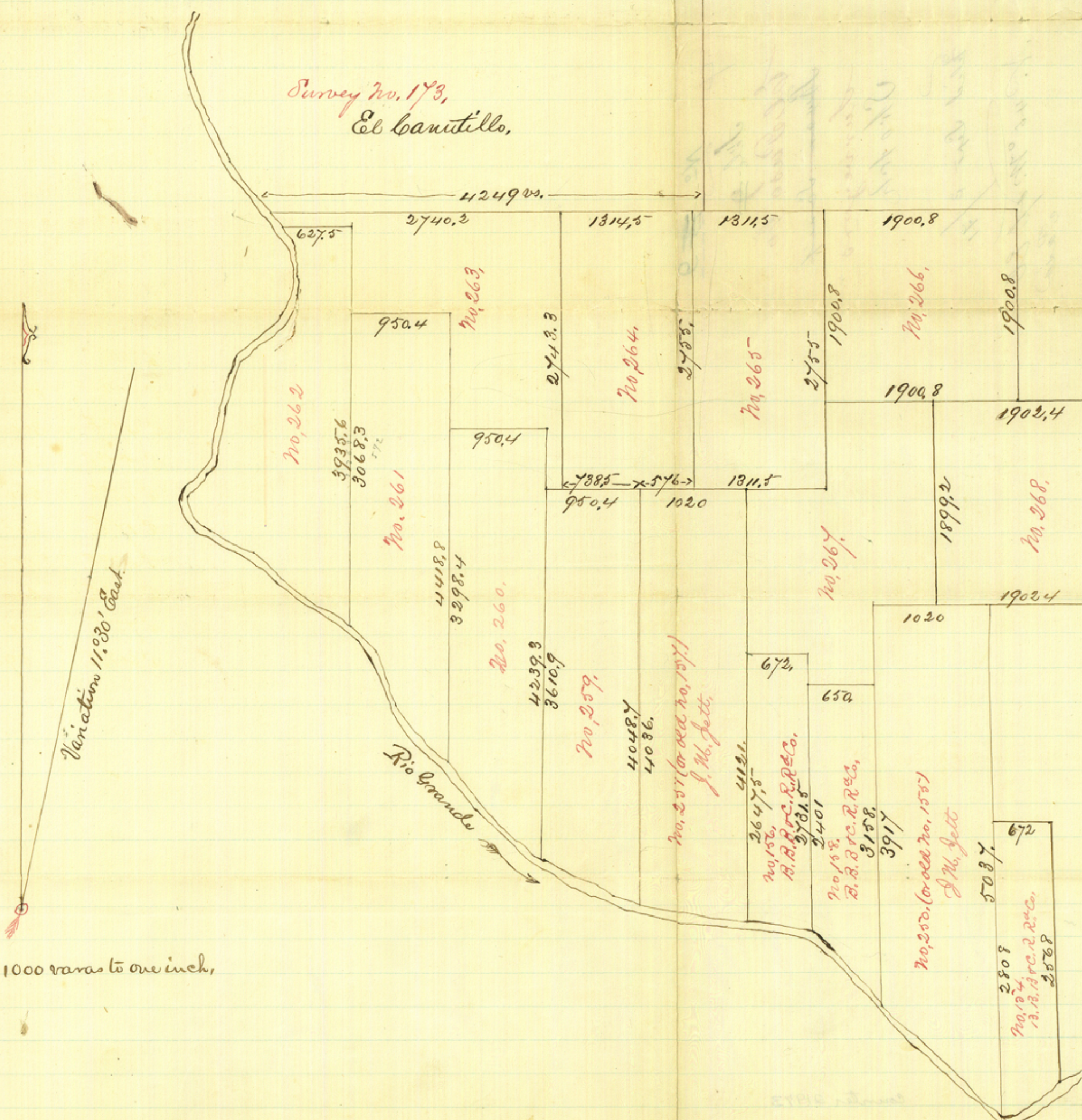
Survey No. 173,  
El Canutillo,

No beginning point.  
Down the River  
Meanderings of the Rio Grande,

- 1 S. 50° E. 380 varas
- 2 South 400 "
- 3 S 30° W. 600 "
- 4 S 43° W. 320 "
- 5 S 19° W. 380 "
- 6 S 15° W. 100 "
- 7 S 8° W. 660 "
- 8 S 50° W. 400 "
- 9 S 32 1/2° E. 400 "
- 10 S 62 1/2° E. 800 "
- 11 S 49° E. 360 "
- 12 S 87° E. 600 "
- 13 S 45° E. 560 "
- 14 S 17° E. 540 "
- 15 S 43° E. 2000 "
- 16 S 60° E. 200 "
- 17 S 72° E. 440 "
- 18 S 60 1/4° E. 890 "

Variation 11.30' East.

Scale 1000 varas to one inch,



No. 257 (or old no. 157)  
J. M. Jette.  
No. 156, B. B. R. & Co. R. R. & Co.  
No. 158, B. B. R. & Co. R. R. & Co.  
No. 250, (or old no. 155)  
J. M. Jette

