

I Wm Anstony do certify that the above is a true
 Sketch copied from the original returned to my
 office by G. B. Erath Deputy Surveyor the Survey
 marked A was made by Erath near the Colony
 line and he says there is no conflict in that quarter
 Ter June 6th 1853

Wm Anstony District
 Surveyor for Mulans Dist

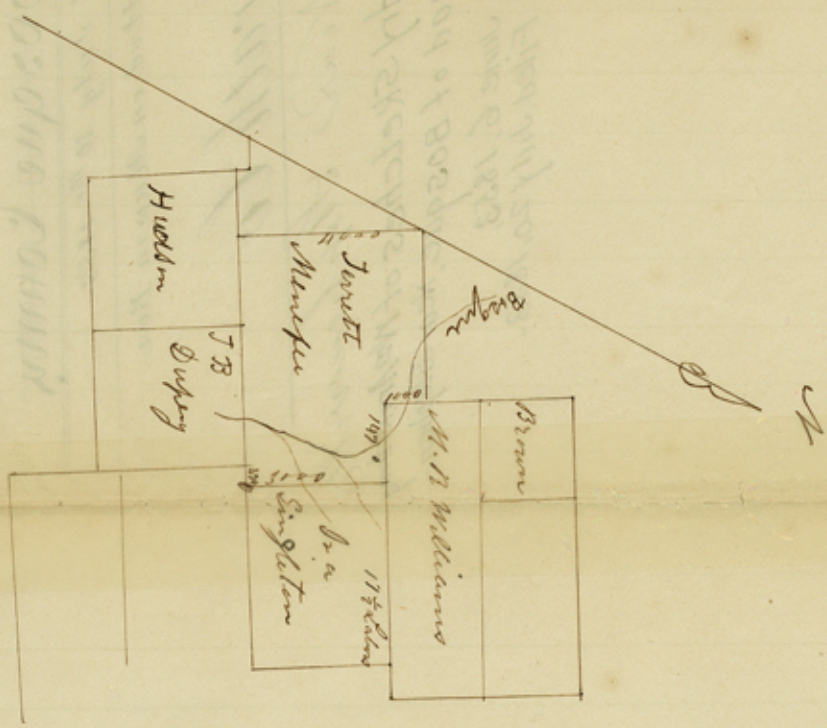
1. Title of
Milam District

Dec 2 1852

[Faint, illegible handwritten text, likely bleed-through from the reverse side of the page]

County 22260

EPH 00 St. File #4



1
 The above is a true copy of a sketch returned to me
 by G. B. Erath Deputy Surveyor for McLennan County
 and the connection between the Dupuy & M. W. Williams
 is correct as shown by myself.

Given under my hand May 27th 1853

Wm. Armstrong Dist
 Surveyor for McLennan
 Land Dist

The field notes of Ira Singleton
 will be sent in in a few days
 Please give A. G. Gholson a
 statement of his Survey about
 to Waco McLennan Co

File 4. Earth 6/30

File # 4,
Milam District

Head of Bosque -
recd. July 20/53 -

Bosque County

Recd July 20th 1853

Plotted on Map in Box

Crath Co

Near Stephenville
Sundry Sketches of Wm Armstrong
on head of Bosque, Near Stephen-
ville, June 6, 1853.
Filed July 20, 1853.

Recd July 20/53

[Faint, illegible handwritten notes on the right page, possibly bleed-through from the reverse side.]

Counter 22362