



The Survey of Thos. S. Box 17 1/2 Acres
is with drawn field have not been
made out or recorded

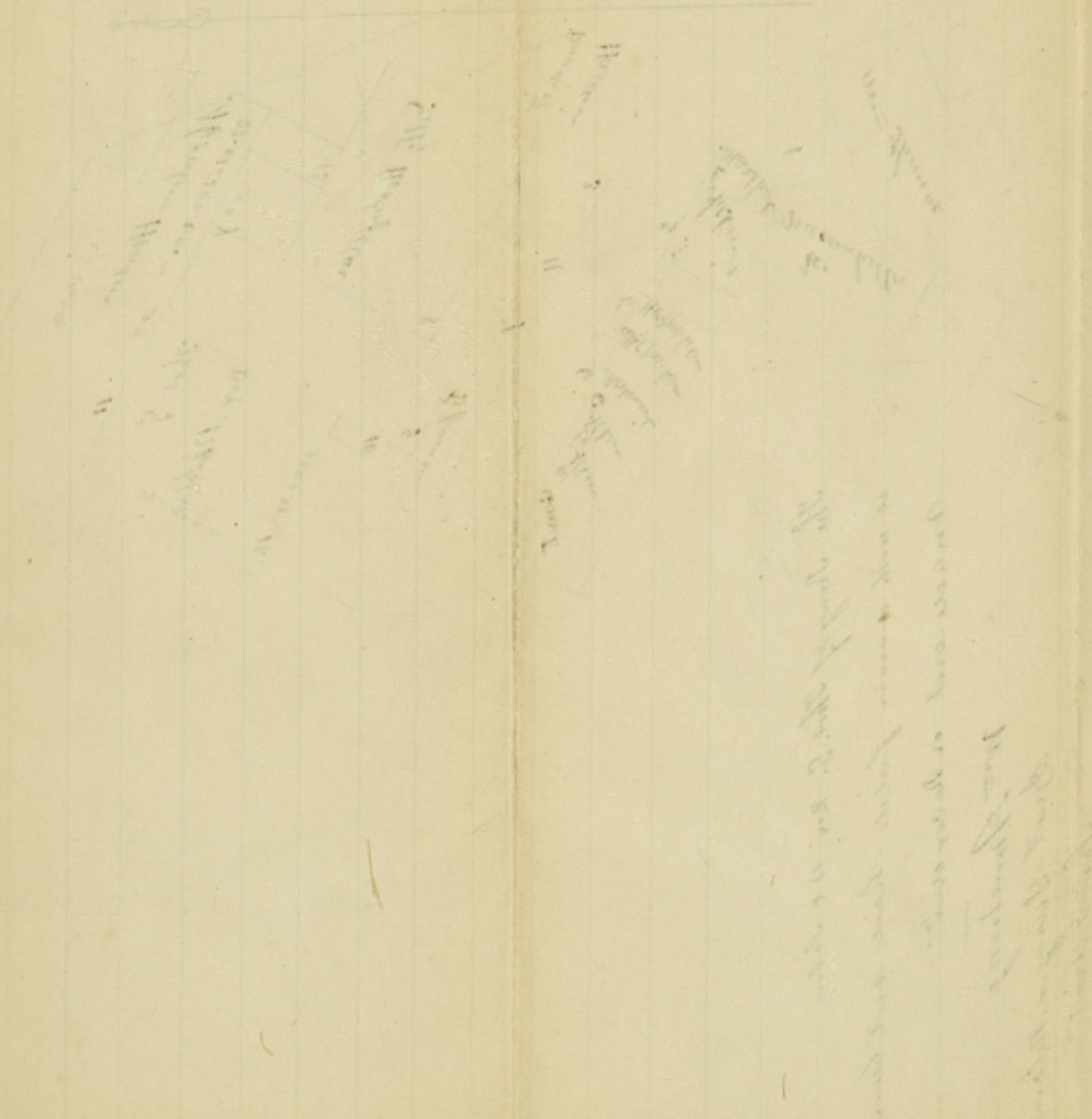
Wm. Armstrong
Dist Surveyor Milam
Land Dist

I Wm. Armstrong dist surveyor for milam Land dist do certify that
the above is a true sketch of the ~~the~~ work done by me in April
1853 on the head waters of the Bosque

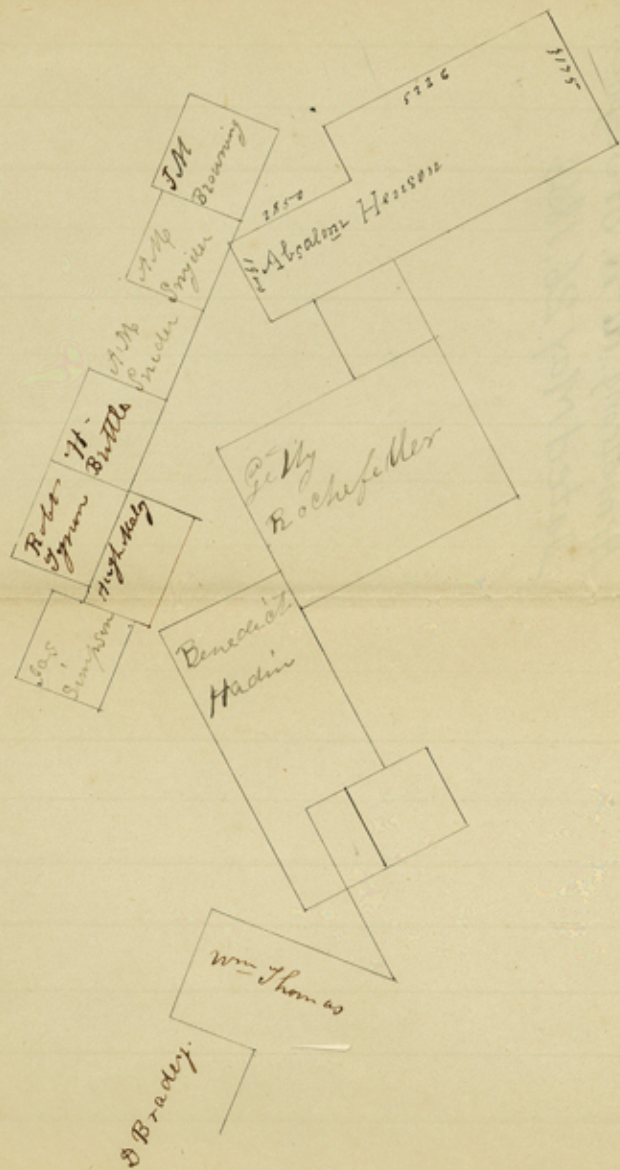
Given at Cameron April 27th 1853

Wm. Armstrong District Surveyor
Milam Land Dist

Sketch
 Rec^d. May 6/53-



The sketch shows a large field with several lines indicating boundaries or paths. The annotations are scattered throughout the drawing, with some appearing to be labels for specific features. The overall impression is that of a rough, preliminary sketch or map.



The above is a correct sketch as taken from the mark on the ground. I am satisfied there is no conflict between the surveys of Absalom Henson & A. M. Snyder.

Given under my hand May 26th 1863

Wm Amstrong
District Surveyor
Sand District

File 5. Crath/58
— File 60 3 —

Milam District

M. Glennan County
Headwaters of the Bosque

May - 1853 —

Crath Co.

N. West of Stephenville

Sundry Surs, or sketches, by W^m
Armstrong. N. W. of Stephenville

Dated May 26. 1853.

Sketch