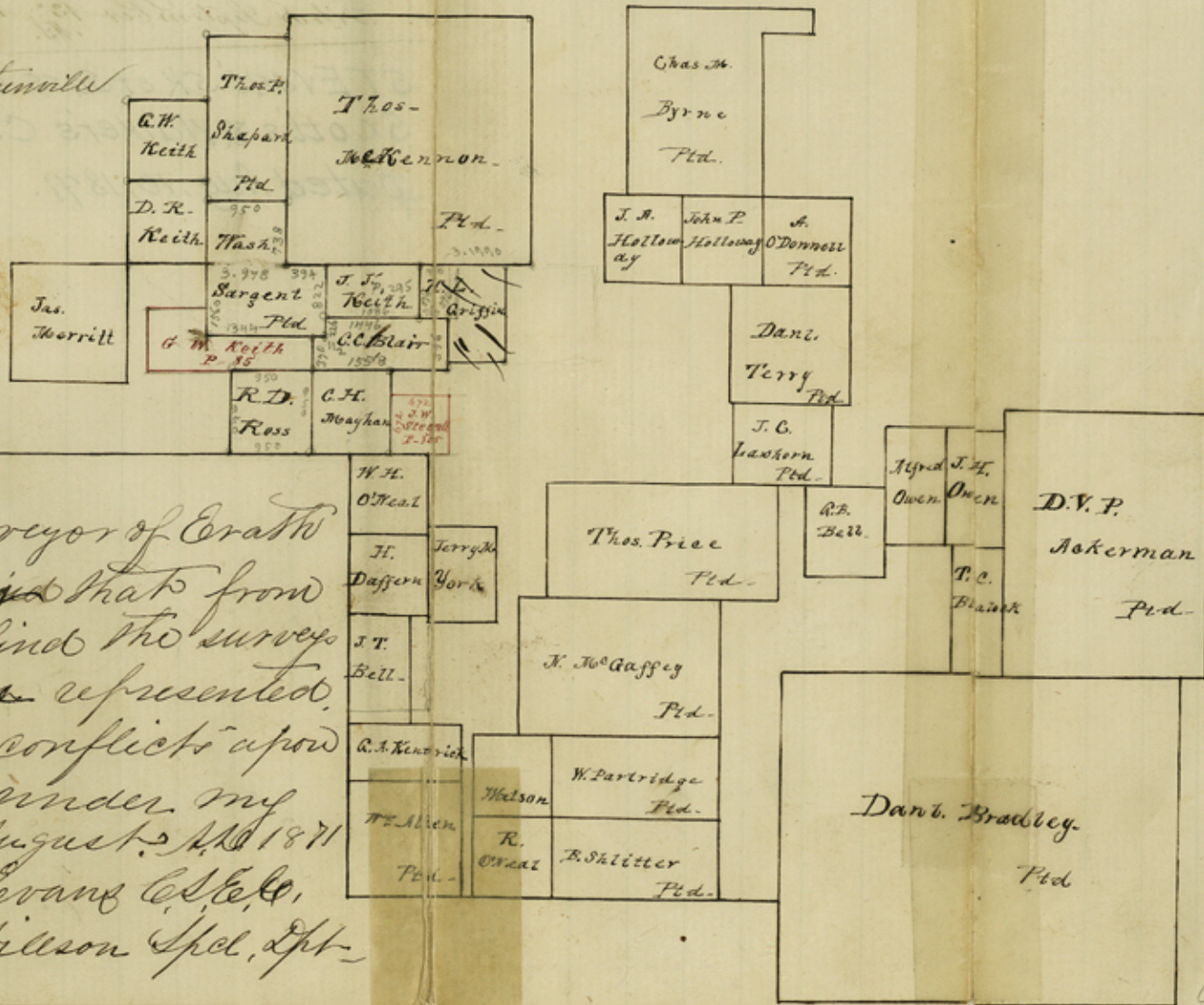


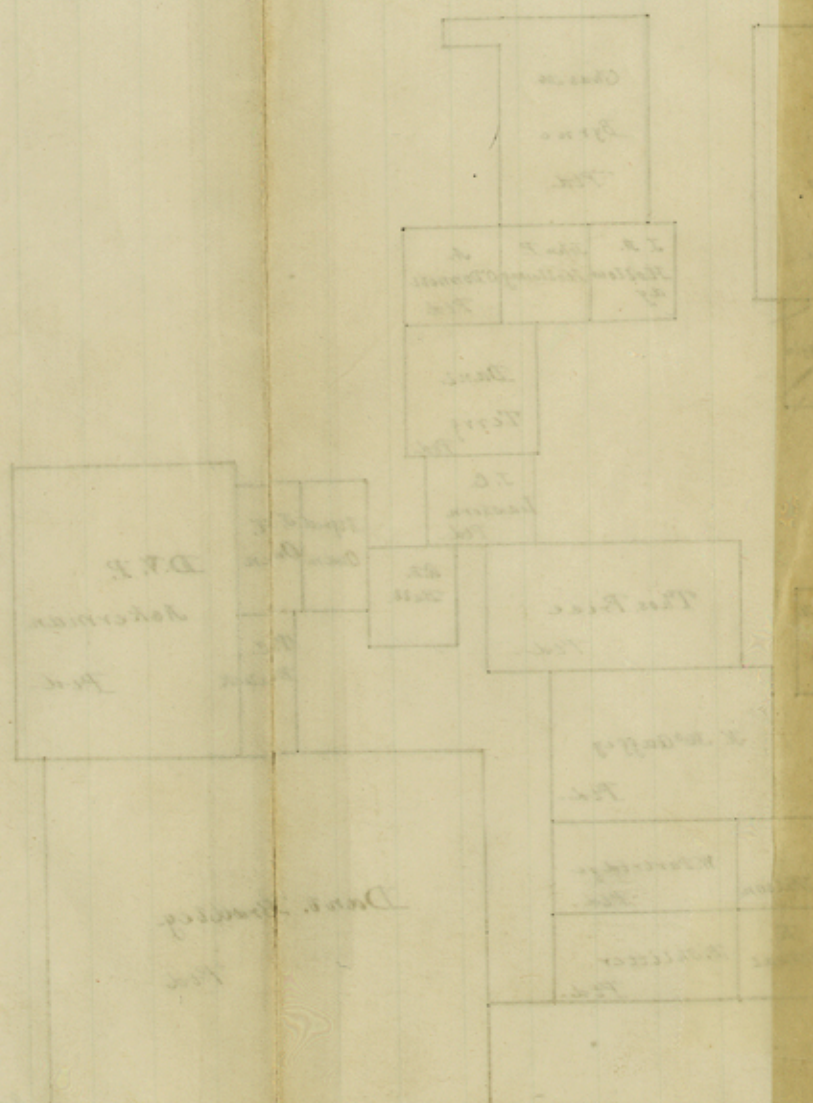
B S 30° W from 15-15 30 mls. from Stephenville



J. S. T. Evans County Surveyor of Erath County do hereby certify that from actual measurement I find the surveys on the above plat, as there represented, and that there are no conflicts upon the ground — Given under my hand this 10th day of August, A.D. 1871
 J. S. T. Evans Co. Secy,
 or J. F. Wilson Spl. Lpt.

Plat of Surveys

J. F. Hillson



10^a
File No. ~~43~~ 10^a

Crath County:

On Scotts and Walker Creeks
near the West line of the
County.

Filed September 13th 1871.

STEVANS'S KOTSURS ON
SCOTT'S & WALKER'S CRS.
DATED AUG. 10, 1871.