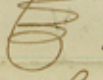


The State of Texas

County of Crath  I S. Y. Evans County Surveyor of Crath County do hereby certify that the inclosed sketch map is a true representation of surveys Nos. 35, 36, 37, 38, 39 & 40, made by virtue of Land scrip issued to The S. A. & M. G. R. R. Co. and shows their connections with surrounding surveys, as found by actual measurement upon the ground. No. 39 covers the land surveyed for A. J. Wood for preemption, but he has abandoned his claim. There is no conflict anywhere.

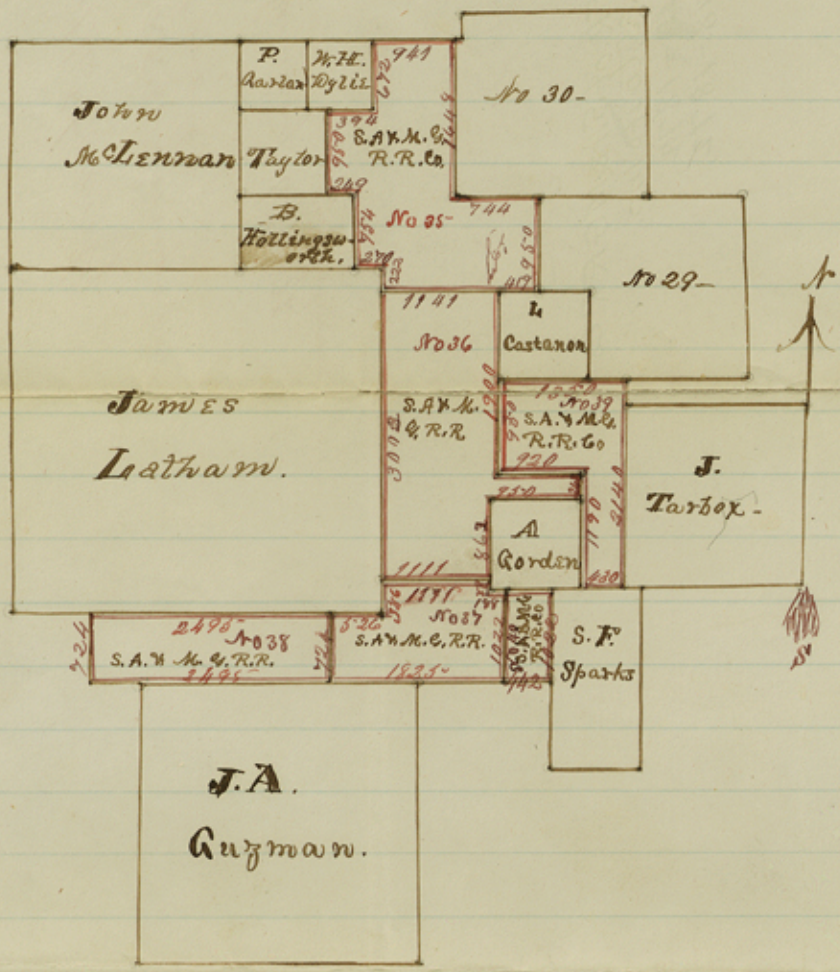
Given under my hand at Stephenville this 13th day of January A.D. 1872

S. Y. Evans C. S. & C. -
per J. J. Willson Sp. ^{cl} Spt.

I S. Y. Evans County Surveyor of Crath County do hereby certify that A. J. Wood has abandoned the land surveyed for him, on 13th day of August 1871, for a preemption, and the same land is now covered by a part of Land scrip No. 16290 issued to S. A. & M. G. R. R. Co. by G. M. White Com. on the 1st day of April 1858. and is survey No. 39.

Given under my hand at Stephenville this 13th day of January A.D. 1871. S. Y. Evans C. S. & C.
per J. J. Willson Sp. ^{cl} Spt.

b



b

File # ~~17~~ #13^a

Crath County

S.A. & M.G. R.R. Co Surveys on
Kartons Cr.

Recd. January 18th 1872

^{Abraham}
Differs too widely from
field notes of past surveys
Could not use it
by comparing Crath Co
Aug 11/75 J.H.

STEVENSON of S.A. & M.G. R.R. Co
Surs. Nos. 35, to Ad Inc.
Dated 1-18-1872,
Filed 1-18-1872.