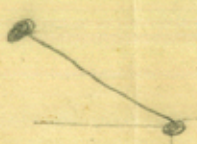
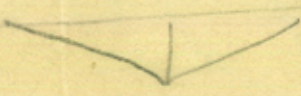
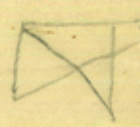


9-11-15-

ES9

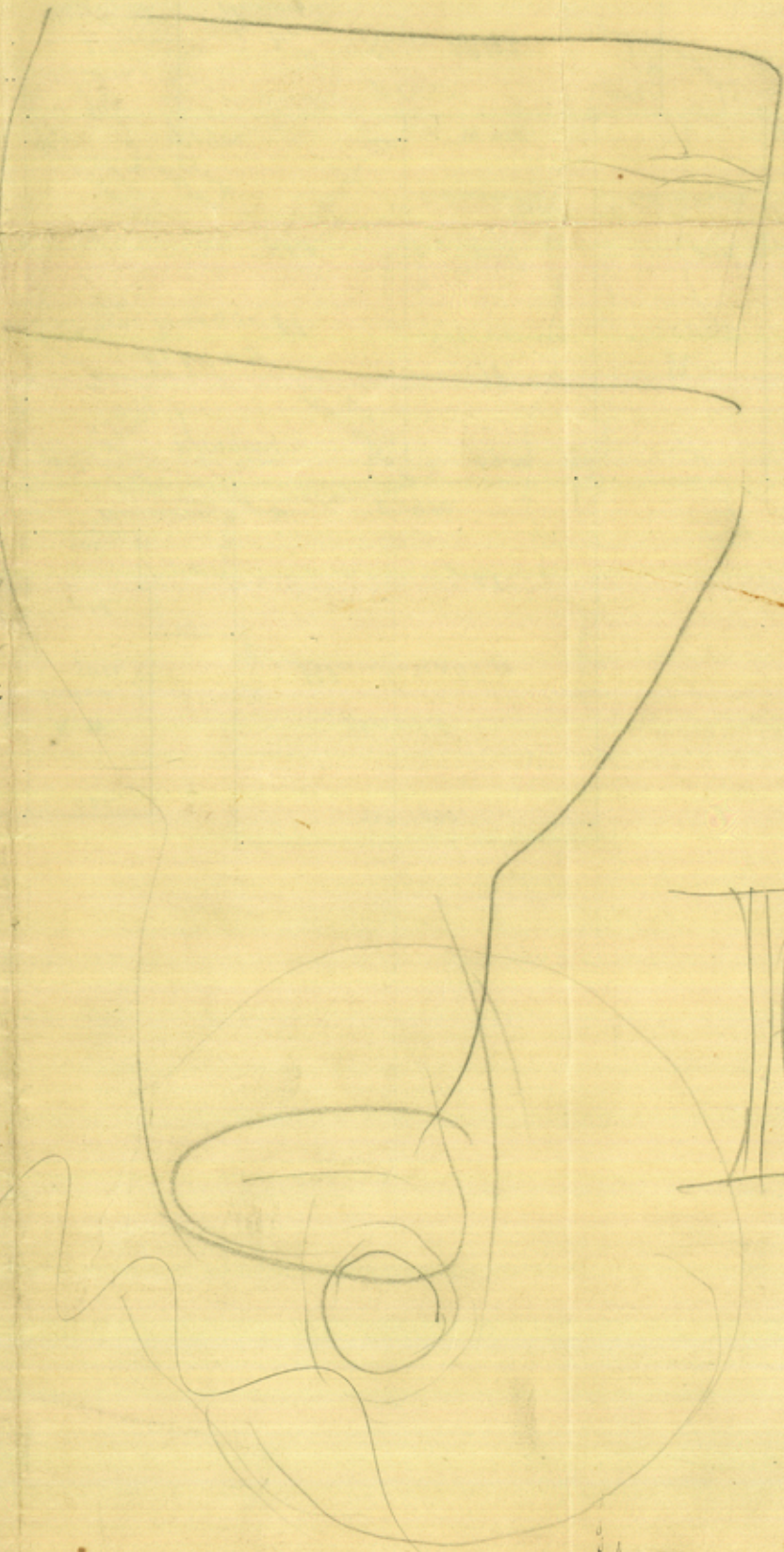
///



28,

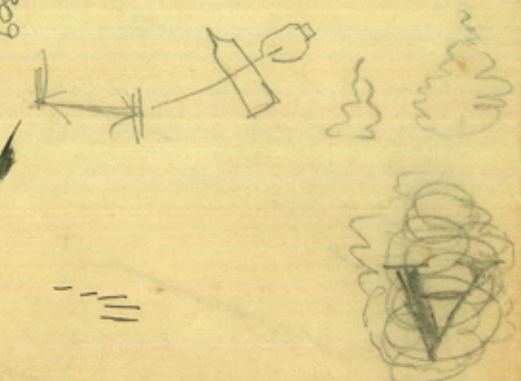
Erath Co
Sketch file

Von Rosenberg's office SK.
Showing surveys around the
Elsy Russell sur
Oct 25, '95,

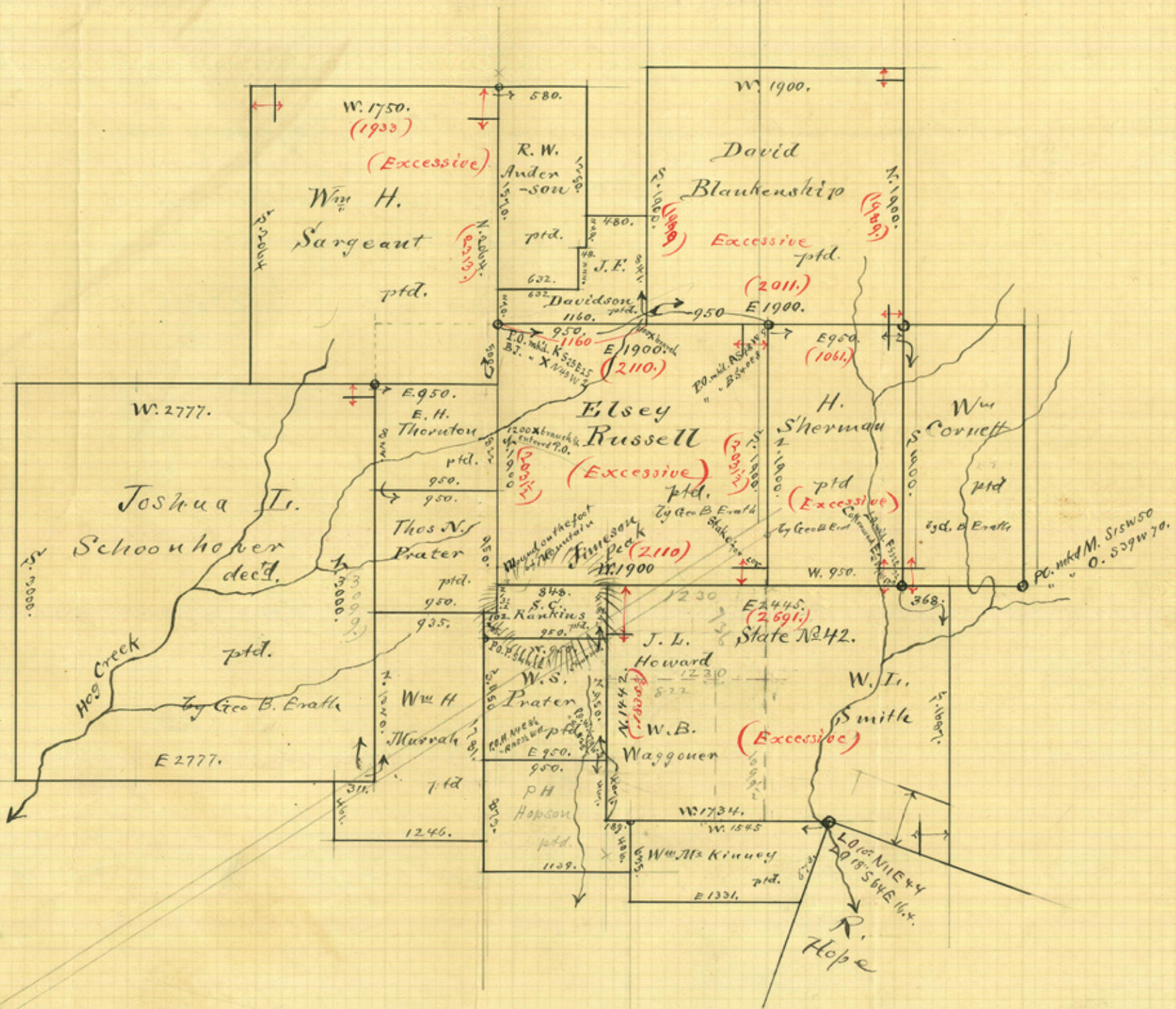


ER
CO

County 22 309



Milam



1830
 1447
 393

School F16179
 16177
 16178

Smith Co. McFarland Oct 25/95

W. B. Waggoner
 1099 1/2 n N 88 1/2 x 1220 E & W = 160 ac
 or 1099 1/2 n N 88 1/2 x 1230 E & W = 239 1/2 "