



The State of Texas
 Westward Land District
 I, The J. C. ...
 Surveyor for Westward
 Land District hereby certify
 that the ...

the true position of the League of Land in
 the name of Anabel Powell. I certify
 that I know it to be so from personal examination
 on the ground for lines corners and Natural
 objects called for in the field Notes of Said Powell
 League. I found the N.E. Corner of the
 league but the South line which I believe never
 was run it being the closing line - the
 North line I found passed through Timber
 and Prairie 2500 rods through Timber & 2500 rods
 through Prairie - the North West Corner is
 in the Prairie and the Distance from the North
 West Corner to the Timber on the line is 300
 the Distance to the Creek and Dry fork and
 line all corresponding with the old field Notes
 of Said Powell Survey. The S.W. Corner I believe
 to have been obliterated - by fire or decay - it being
 an Black fact and subject to decay - I found a number
 of stumps - down trees &c - at the place indicated.

I further certify from a Survey of the ground that
 the Powell ^{League} was surveyed when it has heretofore
 been represented on the Maps - from the facts
 there is no corresponding corners or Natural or Artificial
 objects - to correspond with the field Notes at these places
 I further certify that Anne Walker the Deputy
 Surveyor who surveyed the ... Belverde's ... of a League
 I. M. de Liba Mary Cook & a Corsica ...

has left the Country for the North Western
State and I believe could not be come at
to get a Special Certificate - as the Commission of the
General Land Office requires, as his exact whereabouts
- out is not known - I further certify
that the true line of the Peace Caper
indicated in the above Sketch - is as it well
to be an Wheelock's line, an old line, marked
and known in the Country now as Wheelock's
line - One of the witnesses lives to the
N.E. corner I found - directly opposite to the
point called for, which I find frequently
the case - otherwise correct

Witness my hand this 22nd
A.D. 1837

Thos. A. Oliver
Dist. Comm. W. Va.

S. J. Quinn *certified*

Rob. 1-848
1-849
3-3284

File 5
7

Falls. County.

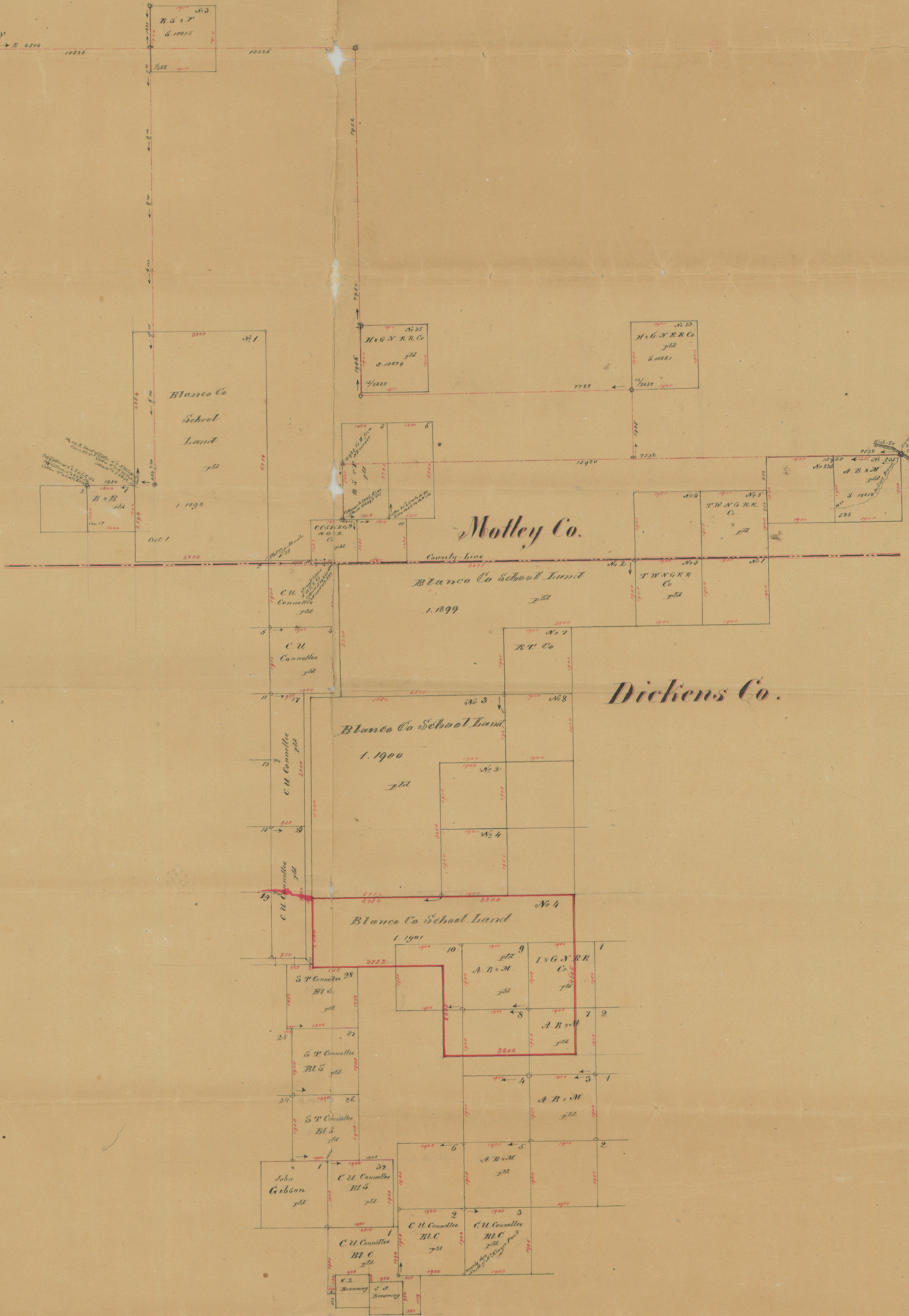
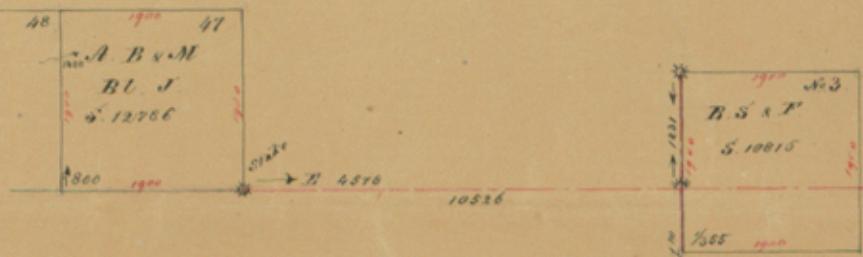
rec^d Oct. 26th 1857

S. E. corner.

Powell

County 22339

XXX²



- 5 -
Dickens Co
Sketch 5
5

office Sketch around
the Blanco Co. Sch^l Land
off SK. No dates

Xo'