

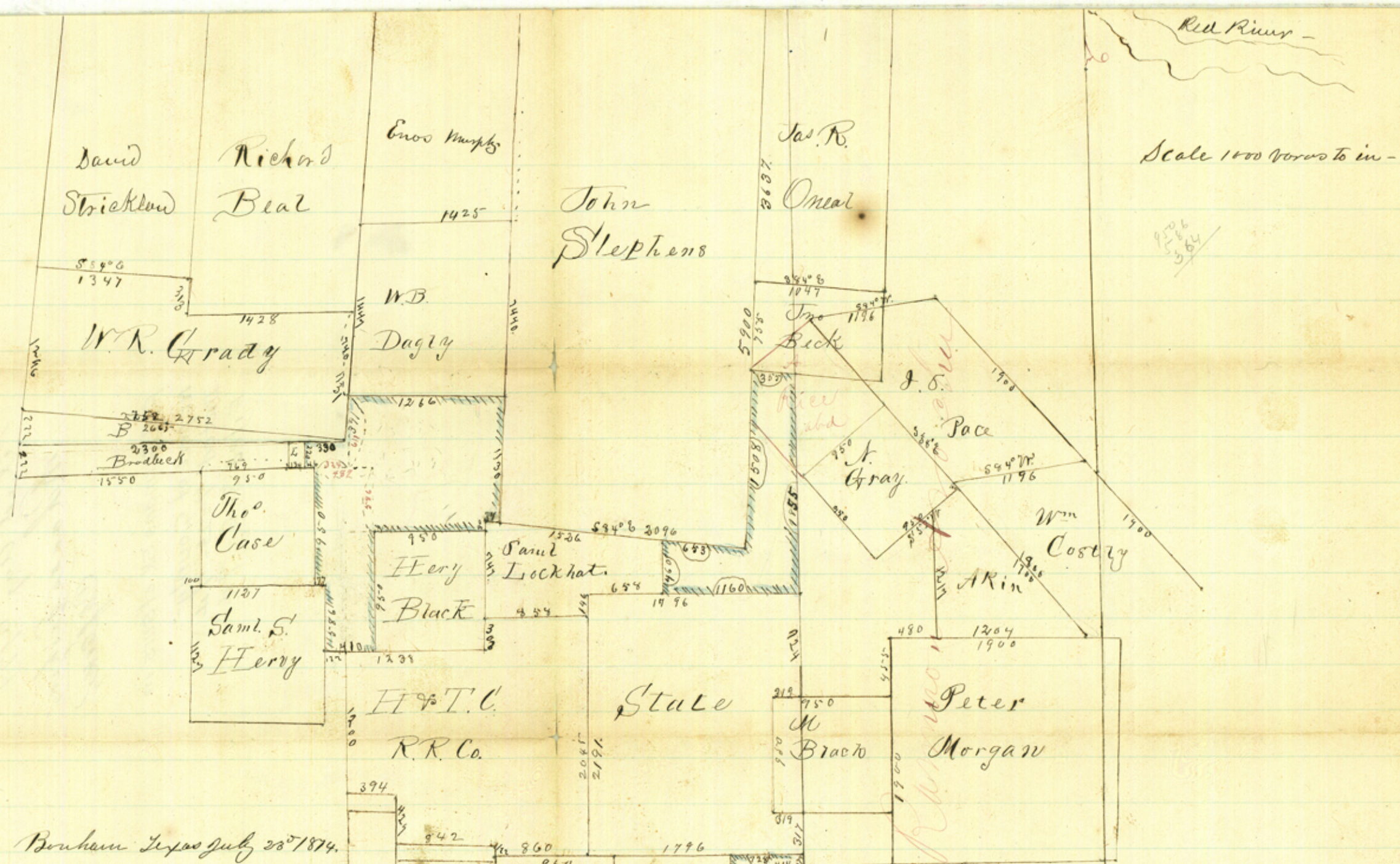
File 17.

Tannin County.

N. East corner.

Filed Aug 6/74
Rhoass Fisher,
Clerk.

FM German's SK of Surs. in
NE part of County -
Dated 7-23-74
Filed 8-6-74.



Bonham Texas July 28th 1874.

The adjoining sketch shows the surveys thereon as I found them by actual measurement of a sufficient number of the lines. I run the entire east line of the Stephens from the River, the bearing trees still standing run the entire south line, west line from Enos Murphy's O.C. corner, the south line of the Dagly, the east line of the Grady 391 rods north from its S.E. corner the lone Elm still standing, (point) the east & south lines of N. Gray & Rice, the south line of O Neal & Beck, & north line of the Pace, & Co. the N.E. corner of the Gray & N.W. corner of Pace have bearing trees. The Rice & Pace both corner in the John Beck - The Red figures at the S.E. corner of the Grada show the relative position as called for in their field notes of the Call to the W.B. Dagly & the H. Black to the Case. The J. R. Archa marked in Red ink I could only adopt an imaginary line, as correct as I could as laid down on the County map -

H.M. German Surveyor Fannin County, Georgia
Counter 22972