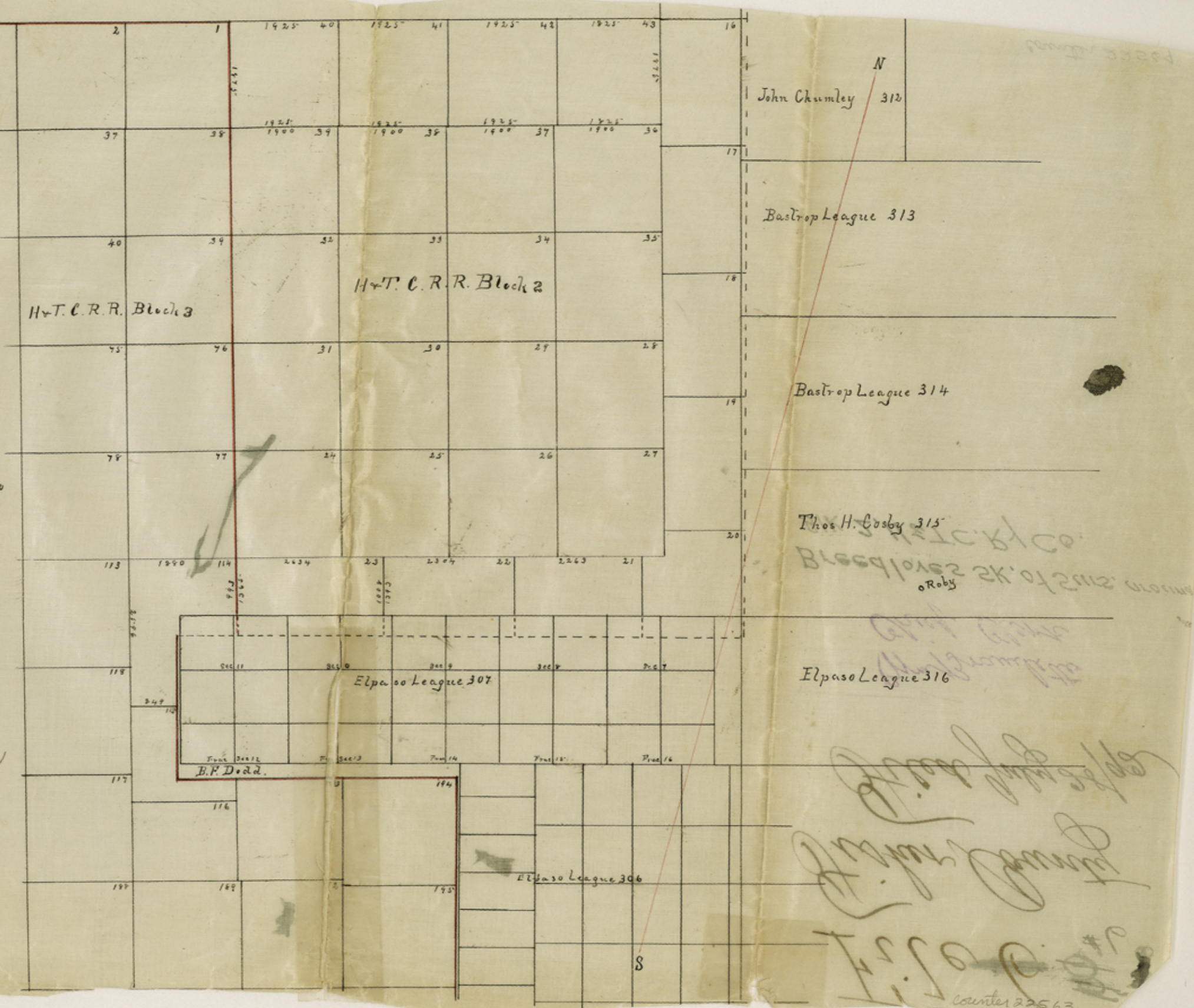


I. W. C. Breedlove, County Surveyor Fisher
 County Texas, Certify that this Plat is made from
 actual ground work. I, assisted the Co Surveyor
 of El Paso Co to subdivide and locate the lines
 of El Paso Leagues in this Co. This plat shows the
 conflict of Secs 20, 21, 22 & 23 with league 307. also
 Sec 114, as it conflicts with said League. I ran
 the ^{South} lines of Secs 27, 26, 25 & 24, to be sure of the
 correctness of my work on Sec 114. The true
 distance of the extreme East line of 114 is
 993 vrs. instead of 1265 vrs. which ends all
 Sec's bordering on the North line of league 307
 Short. That is if this league holds over said
 Sec's by priority of Patented date.

W. C. Breedlove
 County Surveyor Fisher County Texas



File 6. 8 #6

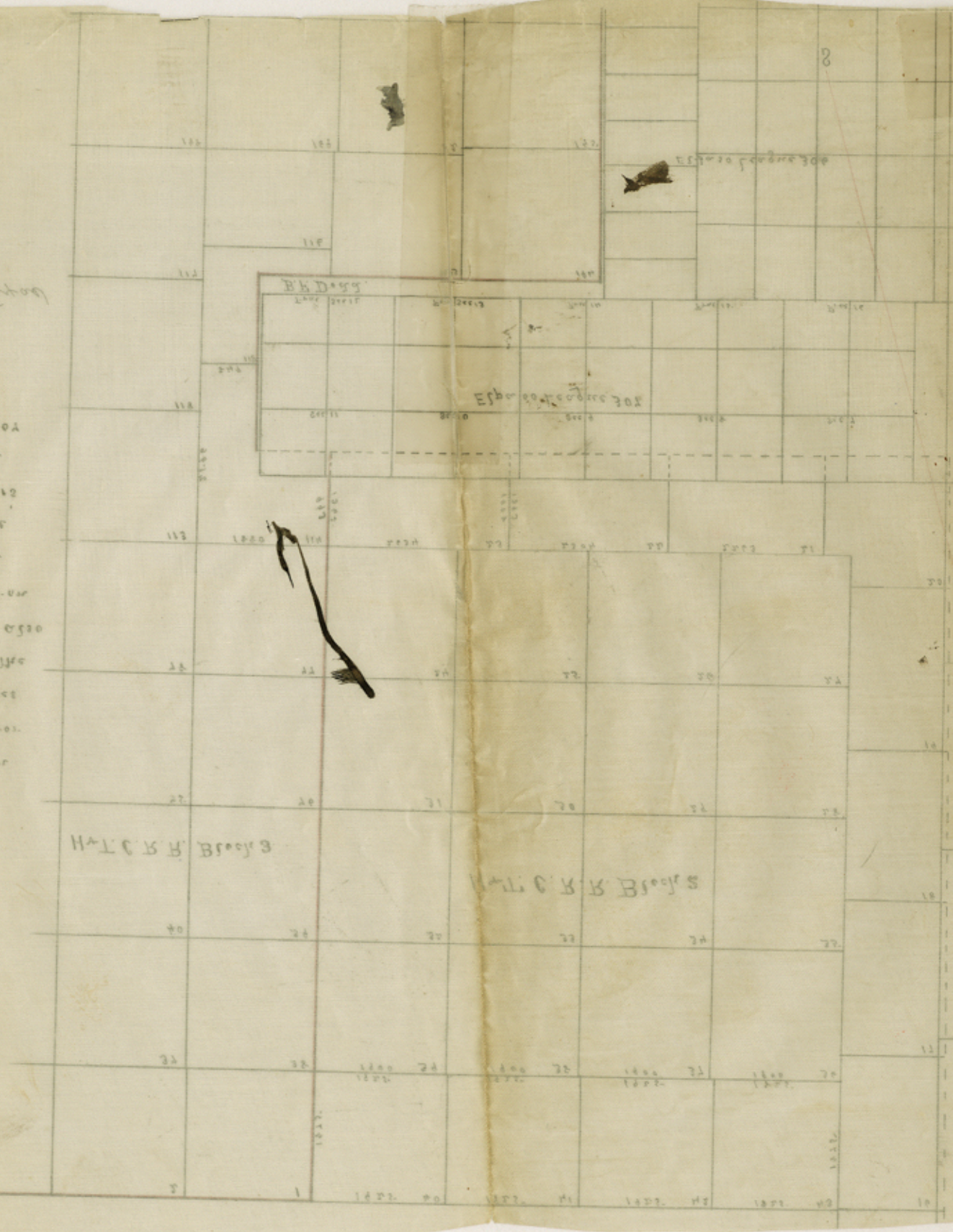
Fisher County

Filed July 28/92

Wm Braullette
Chief Clerk

Breedloves SK. of Surs. against
B.K. 2, H & T. C. Ry Co.

Handwritten notes on the left side of the page, including the number '10' and some illegible text.



counter 22569