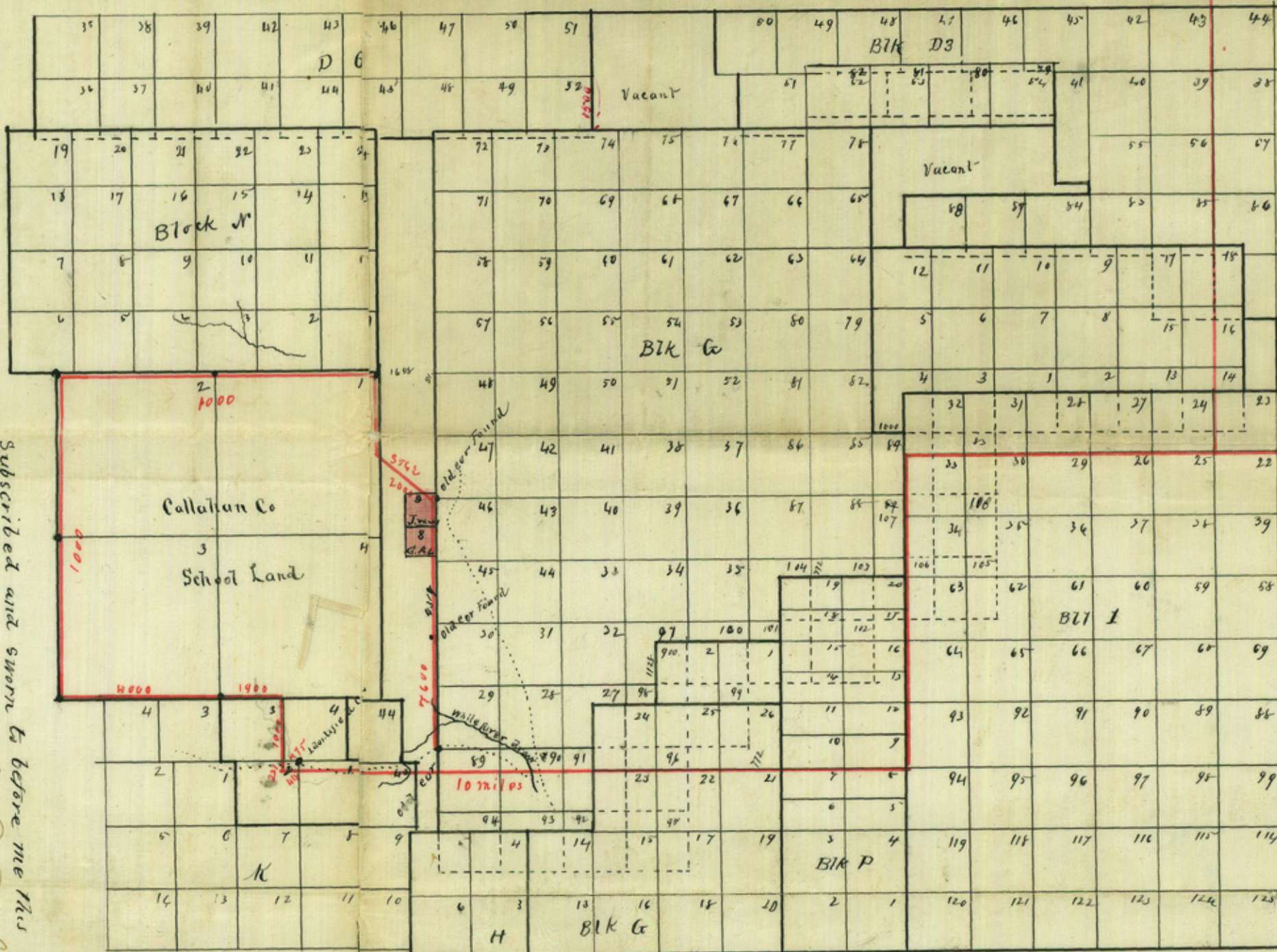


Sketch Map of West Part of
 Floyd County

Showing Connections and Route of Surveys
 Between
 Blks I A B & M, C, I & Cor. Co. W
 and
 Callahan Co School Land

Handwritten notes on the right side of the page:
 10 51 #
 1505 #
 2005 #
 SE cor 14 DI.
 13 m + 372 m
 17 miles



Subscribed and sworn to before me this 22 day of July 1886,
 J. C. Humphreys Co. Co. Clerk, District
 Clerk to the Surveyor

I James H Parks a practical Surveyor do hereby solemnly affirm that the foregoing Map truly represents a survey made by me in the West Part of Floyd Co to wit:— Beginning at the NE cor 1 Blk I A B & M Cert 21 West 17 miles. South 5 miles. West 10 miles. To 221 m E 1/2 m old cor NW 1 Blk C W 47 m 1900 W 1900 SW cor 4 Callahan Co 5 1/2 m 5000 N 5000 N 5000 E 5000 E 5000 pass old established cor of Callahan Co S.L. 52051 S 5000 2000 found old land cor the cor 47 Blk G 9 at 4317 old land cor at 7000 old stone mid cor 29 Blk G
 Jas. H. Parks.

J. J. McClelland, Sec. Hon. Land Dist. do hereby certify
 that I have examined the above Sketch and find it
 correct and in accordance with field notes now of
 Record in my office.
 J. J. McClelland
 Sec. Hon. Land Dist.

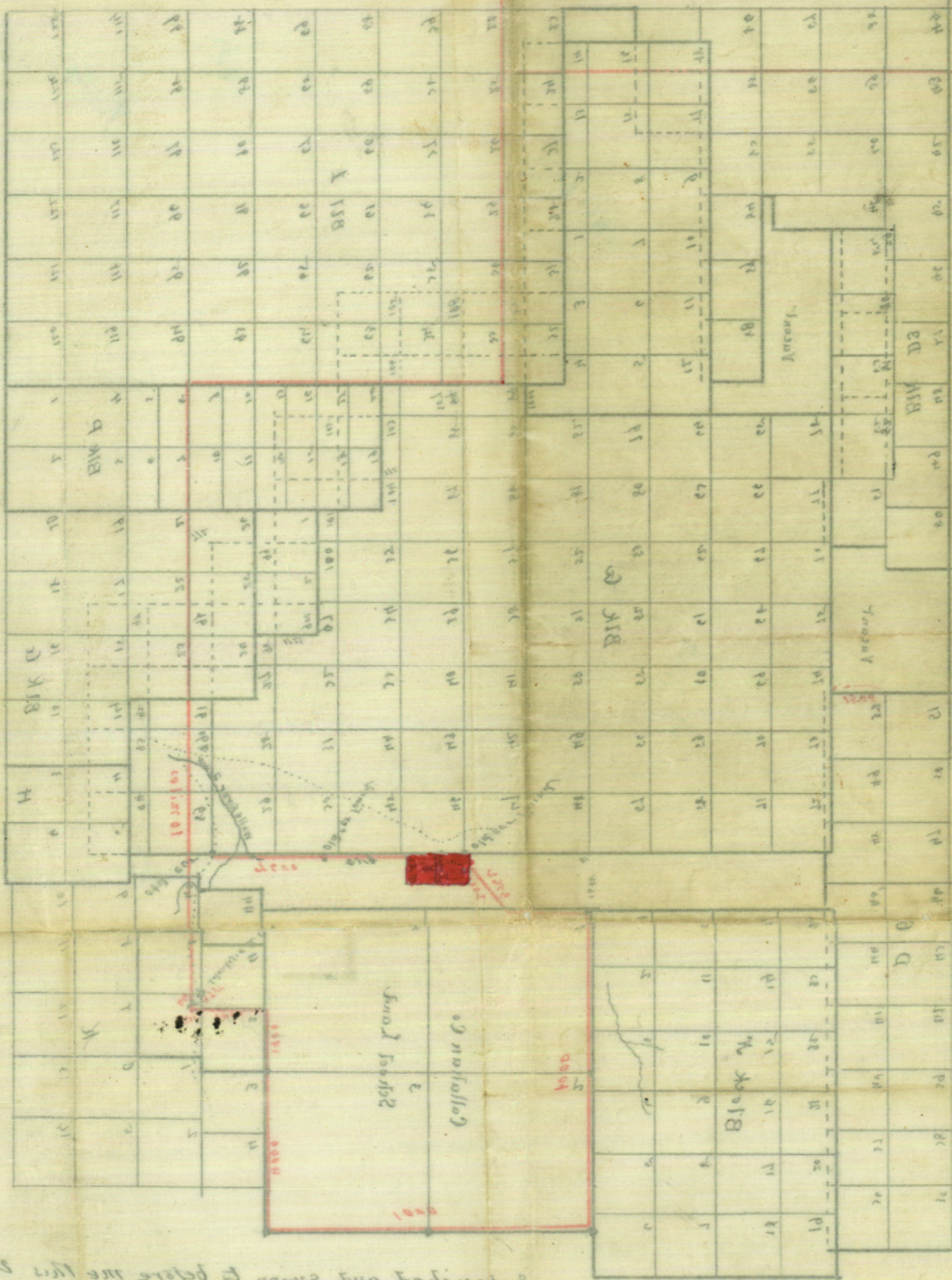
Clarendon Tex.
 July 24th 1886

Sketch #1
Floyd Co.

Filed July 31/86
D. N. Robinson
Chief Clerk

J. H. Parks' SK. of parts of
Blocks 1, AB&M, and C, 1&GN.
R.R. Co.
Dated 7-24-86.
Filed 7-31-86.

July 31/86



HA

AB

Subscribed and sworn to before me this 28 day of July 1886
J. E. Thompson, J. P.
Chas. C. Early, Clerk

There are 100 rods in a mile
There are 3600 rods in a square mile
There are 640 acres in a square mile

W. H. Parks
South 2691

A5

Surveyor's Office, July 24th 1866
State of Texas
Co. of Kinney, & Co.,

Am. W. C. Walsh
Comr. Genl. Land Office,
Austin, Tex.

Sir,

Herewith I submit report of
a Survey of connecting lines made
in Kinney Co., Tex. between B.M.s. 10¹,
10², 10³, 10⁴, 10⁵ and the Callahan Co. whose
Landes, to wit;

Var. = 10^o 30' E. Begin at a large rock
corner, on south west, the established N.E.
Cor. Sec. 1, B.M. 1, A. B. M., Cont. 2181

Thence, West establishing mile runs,
and rocks for Sec. 1, Cor. 1, 17 miles,
established large south runs, with
stone runs, X 3 tin cans and Pine stakes
the N. W. Cor. Sec. 33, B.M. 1;

Thence, South, establishing rocks, and
south runs, at each mile 5 miles
a rock run X, tin cans filled with
stone, pine stakes, 150, var. South of S. E.
Part of a surface rock.

Thence, West establishing corners of
rock, south runs, or stakes for 5 miles
at 6 miles and 66, var. cross White
Chin draw, at 8 miles and 30, var.
cross Callahan draw, at 10 miles
a stake,

Thence, North 2121 vs; a Put.
 Thence, West 57 vs; established an
 East mound; 475 vs; due west of the
 old established N, W, Cor. Sur; 1
 Bk. "C" same being a large south
 mound; with rock in center on N. side
 of old Mill; Road and 54 vs; E of
 draw and 75 vs; N. of same;
 Thence, North 1900 vs; Pine stake
 and stone mound;
 Thence, West 1998 vs; vs; found the
 old established Cor; for S, W, Sur; 4
 Callahan Co; School Land
 Thence, West 5044 vs; found old
 established S, W, Cor; Sur; 3; Callahan Co; ^{S.L}
 Thence, North 5037 vs; old established
 S, W, Cor; 2, Callahan Co; School Land
 Thence, North 5015 vs; old established
 N, W, Cor; Sur; 2, for Callahan Co;
 Thence, East 50213 vs; old established
 N, W, Cor; Sur; 1, for Callahan Co;
 Thence, East 5030 vs; old established
 N, E, Cor; Sur; 1, for Callahan Co;
 Thence, South 2631 vs; with mound;
 Thence S 56° E, 21000 vs; found old
 rock mound; supposed to be a line
 corner on west line line of Bk. "F"
 Thence, South at 11317 vs; pass old
 Cor; at 7600 vs; found single Put.
 set in ground, on S side house near
 draw,

A'

Var: = 11° 41' E

Beginning at S. E. Cor; Sur; 19, Bk; 10³, a large earth mound in center of circular ditch, Place stone in center of same.

Thence, South, placing stone at each mile, at 13, miles and 372, vs; a Plat; 191, vs; west of N. W. Cor; Sur; 218, Bk; 1, as set by line notes above herein. This Survey shows the lines of Bk; 10³ to be 70 vs; E. of corresponding lines of Bk; 1, and a conflict of the two Bks; of 15218 vs; N & S.

I, J. S. McClelland, Sur; Gen; Land, do hereby certify that the above survey was actually done on the ground and the corners and marks both natural and artificial as called for are true and correct. Witness my name officially,

San Francisco June 1st 6th 1886

{ Geo; Captinjer } Chain J. S. McClelland
{ Harry Sims } man Sur; Gen; Land

The above Survey is duly recorded in my office, Mayor Co. Rec; vol. Page
J. S. McClelland

Note Sur; Gen; Land, Recist.
Reference is hereby made to a Report of Survey made by Sam; L. Chack as kler; Sur; Bagler, Land Recist, and

filed in your office in August, 1882,
said Survey showing connection between
the mouth of Jackson's Branch in Motley
Co; and Blk. B. 4, Floyd Co; as herein,

J. M. Cullman

#4
Report of Survey
Floyd Co.
J. M. Cullman
Surveyor
#4