

W. D. TWICHELL
AMARILLO, TEXAS

Recd 12-12-1913

October 10, 1913.

Mr. W.D. Twichell,
Amarillo, Texas.

Dear Sir:

I have checked the figures which John disputed and am obliged to admit that he is too near right to suggest a change in his figures.

Your will please advise him to make the following corrections: Motley County, Section No. 21, Block G.P. 541 instead 5458
Fish ~~XXXXXXXXXX~~ S.F. Sur 268.5 instead 253
Standifer survey 158.5 instead 162.

7
Hon J. T. Robison;
I find the corrections in my corrected field notes for Block G.P. as indicated above should be made, you will please apply these corrections to my corrected field notes. Yours respectfully
W.D. Twichell
County 22742 State Surveyor.

W. D. TWICHELL
AMARILLO, TEXAS

Rec'd Jan 13/1913

January, 11, 1913.

Hon. J. T. Robison,
Austin Texas.

Dear Sir:-

In accordance with your instructions dated Oct. 2, 1911 I made a resurvey to determine the relative positions of Block G.P. in Motley County and Blocks D.3 and G.&M. in Floyd County and have made a resurvey of the lands lying along the common boundary of the two counties indicated on your working sketch dated Oct. 1911, and forwarded as a part of your instructions for this resurvey, the field notes of which I herewith hand you.

To determine the course on which to construct Blocks D.3 and G.&M., I made a connection between large earth mound, the Original S. E. corner of section No. 19 Block D.1 and the N. E. corner of section No. 51, Block G. & M. the N. W. corner of section No. 49 which the field notes describe as being 9 miles East of the S. E. corner of section No. 19, Block D.1.

The original S. E. corner of section No. 19, Block D.1 now has a corner post in the center of it and is about 30 varas S. E. from a school house and is all obliterated except the S. W. quadrant which is protected by being inside the fence corner. W. J. Williams, transitman on this work visited this monument in 1904 and found new fence corner post in the monument then otherwise not disturbed; it being a well rounded mound and trench about 6 inches deep, both ~~was~~ being well grassed over. Mr. Williams was County Surveyor of Hale County at that time.

The N. W. corner of Section No. 49, Block G. & M. is at a point in valley from which a rock monument on East bank of spring branch at junction of three spring branches, bears S. 3° 45' W. 461 varas. From said rock monument a rock bluff bears S. 25° E. about 140 varas. I find this monument to be well preserved, not having the appearance of ever having been disturbed. The cotton wood tree has disappeared but Mr. Williams, mentioned above, informs me that he found the tree leaning over the stream and half unrooted but still growing; with old surveyors mark showing plain in 1904.

I found the distance between the above mentioned corners to be 17078.5 varas measurements being taken on an offset to the South in order to have level ground over which to chain, the direct line being through the Quitaque Canyon and very rough. The course of the line connecting these corners is N. 89° 25' E. compared to a meridian passing through the N. W. corner of section No. 49, Block G. & M.

I constructed the lines of the sections in Block D. # 3, included in the present resurvey, parallel and perpendicular to the line joining the above corners, beginning measurements from the S. E. corner of section No. 19 Block D.1.

The Chas Goodnight Surveys are resurveyed from their original corners, which still exist, and the younger surveys are constructed to conform with the boundaries of older surveys when no corners of their own could be found.

I am also enclosing three blue prints with red lines to indicate graphically the principal connecting lines run to determine the construction of this work.

The Eastern part of this work is made to conform with the resurvey of Block G.P. which I made under your direction in 1910.

These explanatory notes should enable your examining draftsman to familiarize himself with this work.

Counter 22744

*Yours respectfully
W. D. Twichell*

71

THE STATE OF TEXAS

FLOYD COUNTY
~~CROSBY COUNTY~~

Survey No. Vacancy

Block No.

Grantee:

True Mag. Var. 10° 20'

CORRECTED FIELD NOTES of a re-survey of 97.² acres of land situated in Floyd County, about 16 miles N.67°E., from Floydada same being Section No. Block Certificate No. , issued to made by me as State Surveyor, by virtue of Title LXXXIX, Chapter One, Revised Civil Statutes of 1895.

[For Plat of this Survey see other side of this sheet.]

BEGINNING AT the S.W. corner of Section No. 21, Block G.P. in the east line of Section No. 68, Block D.3;

Thence S.0°35'E. at 293 varas cross fence, at 423.7 varas set 1½x36 inch galvanized pipe marked 68-69 and brick for the N.E. of Section No. 69, Block D.3, at 668.7 varas pile of stones, at 798.7 varas, 1174 varas, at 1514 varas, at ~~1708-varas-and-at-~~ cross draws, at 1710 varas to 1742 varas cross creek, at 1986.7 varas pile of stone at 2124 varas cross draw, at 2324.7 varas pass pipe marked 69-256, a brick and pile of stones, the N.E. corner of Section No. 256, at 3329 varas and 3579 varas cross draws, at 4225.7 varas pass 1½ inch pipe marked 256-99 and pile of stones for the S.E. corner of Section No. 256, fence bears N.W. 2.4 varas, at ~~22~~ 4838.7 varas pass pile of stones, at 5075.7 pile of stones in the east line of Section No. 99, Block D.3, 850 varas from its N.E. corner for the N.W. corner of Survey No. 402 in Name of J.P.Drace;

Thence N.89°45'E. 101.5 varas to old pile of stones in deep canyon, the S.W. corner of Survey No. 363 for J.P.Drace;

Thence N.0°15'W. 963.7 varas to old pile of stones, the S.W. corner of J.P.Drace Homestead;

Thence N.0°23'W. 943.6 varas to old pile of stones 1½ varas north of corner post and 1.7 varas east of small drain;

Thence N.0°7'W. 952.4 varas to old pile of stones for the original N.W. corner of the J.P.Drace Homestead, set pipe;

Thence N.1°8'W. ~~22~~ 2211.7 varas to a pipe set in old pile of stones, the original N.W. corner of Section No. 22, Block G.P.;

Thence S.89°25'W. 97 varas to the place of beginning

W. J. Williams with Buff Transit 6741.

[Courses compared to meridian through S. W. Cor. Section 3 Blk D3] J. M. Dobbins } Chain Carries
J. Rufus King }

I, W. D. TWICHELL, State Surveyor, do hereby certify that the foregoing re-survey is correct and that it was made in the field, in accordance with law, and that the limits, boundaries and corners with the marks, natural and artificial, are truly and correctly described in the foregoing plat and field notes.

Re-surveyed, May 16th to 31, 1912.

APPROVED: *July 29, 1913.*

W.D. Twichell
State Surveyor.

J. Robinson
Commissioner General Land Office.

Correct, June 26, 1913.
S. von Rosenberg
Chief Draftsman

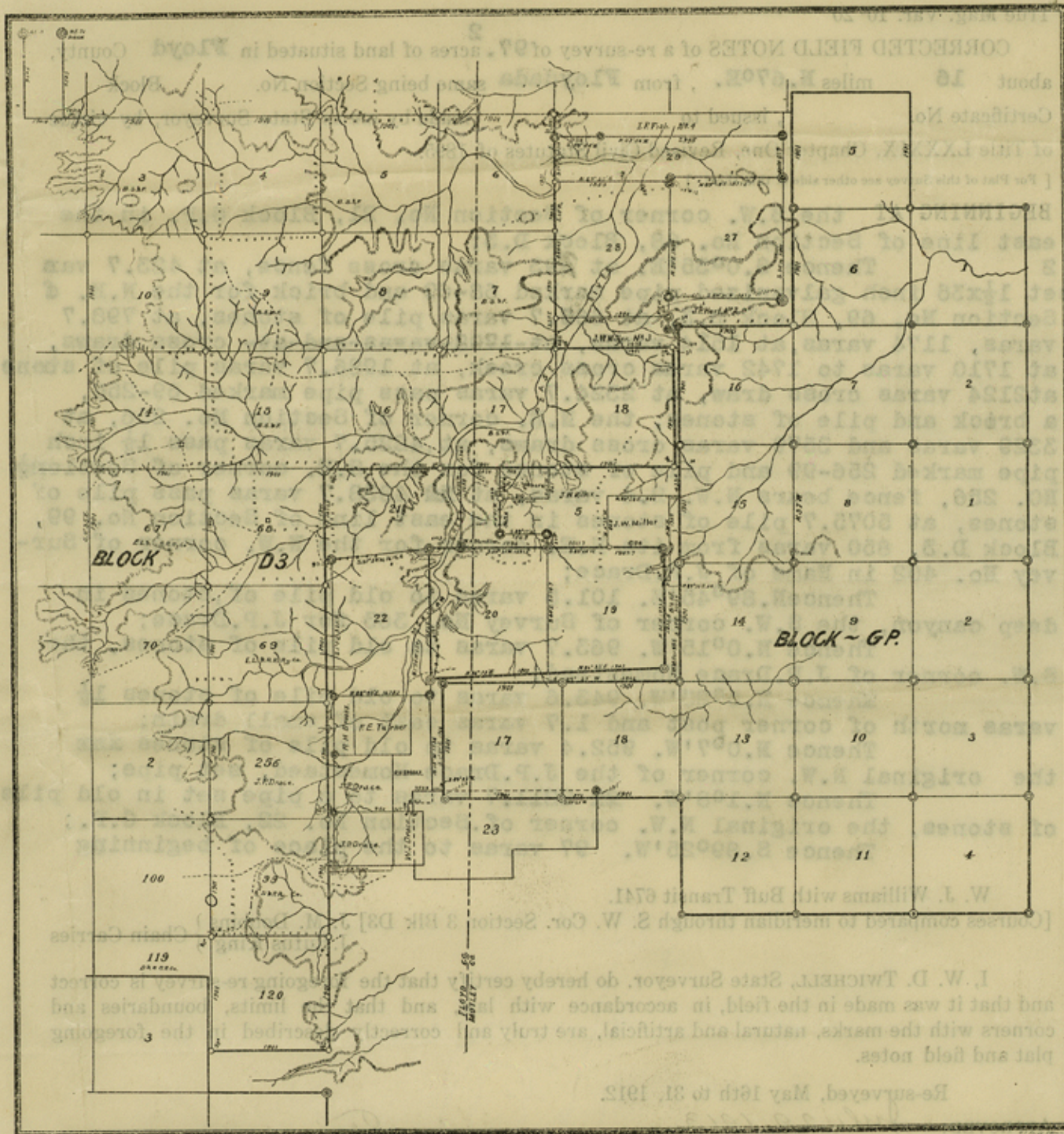
72

Counter 22745

91

Survey No. Vaganoy
Block No.
Grantee:

THE STATE OF TEXAS
FLYD COUNTY
CROSSKEY CEMETERY



Re-surveyed, May 16th to 31st, 1912.

I, W. D. TWICHELL, State Surveyor, do hereby certify that the foregoing is a true and correct copy of the original field notes and that it was made in the field, in accordance with the laws of this State, and that the corners with the marks, natural and artificial, are truly and correctly located in the foregoing plat and field notes.

State Surveyor

Commissioner General Land Office

Counter 22746 Floyd Co SK File 16

