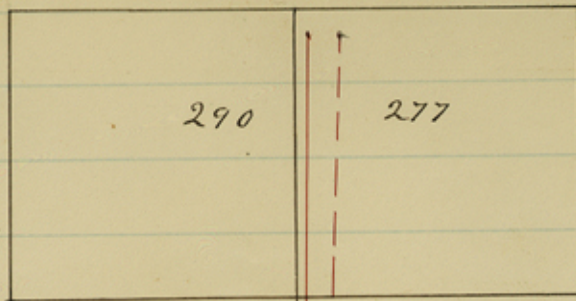


Hardeman County Tex.
July 10 1885

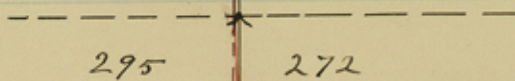
Description of Sketch.

Base lines run by myself are shown
in black. Random lines are black
and dotted. Lines run by County
Surveyor are shown in red.

Lines as run
and as located by
removal of N.W.
Co of Survey No. 277;
said work done
by Messrs. Armstrong
and Westmoreland, are
shown in red dotted line.

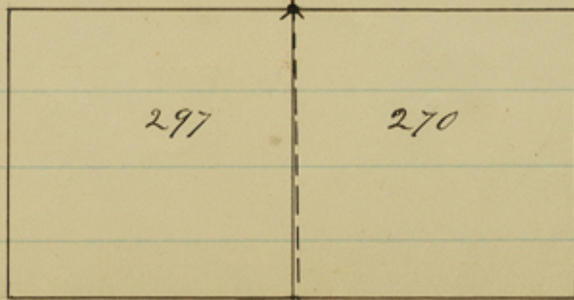


W. M. M. Dept. Surveyor
Hardeman Co. Tex.

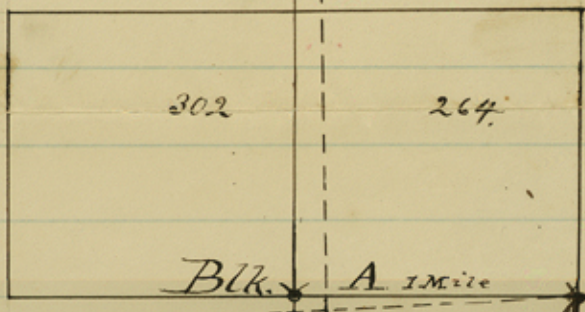


2 M 27205

Original Corner
Known as Hackberry
Corner



2
M
2
2
&
5'



Stone Mound
(Original Corner)

Blk. B. Blk. B. Blk. E.
Blk. B. Blk. X

Foard Co

Sketch of Base
Lines in Blk. A.
Hardenan Co., Tex.
Randon Lines - Shipman
Surveyor. 7-10-85.

Counter 22818

m