

State of Texas }
County of Fort-Bend }

Certificate of a Connecting
line run from the South
corner of the Thos Habermaker 1/2 league Survey
in the Northern part of Fort Bend Co - Tex
to the N.E. corner of the Knight & White league
Thence to the N.W. corner of the Randall Jones
1/2 league - Also of another line run from
the N.W. corner of said R Jones 1/2 league E & N
to the South line of John Brack 1/3 league
Survey and from same corner E & N. to the
S.W. corner of the John M^e Donald 480. acre
Survey

Also a con- line run from the West line
of the Joel Wheaton Titled league on Buffalo
Bayou in Harris (at its crossing of said Bayou) W & S
to John Brack 1/3 league S.W. corner and the of
said Thos Habermaker 1/2 league East corner

To Hon R M. Hall Com^r of the Gen^l-Land
Office at Austin Texas

Hon Sir

Having been
applied to by Geo. H. Evans Pres^t New York
and Texas Land Co - for a correction of
G. F. & G. N. Surveys in the Northern part of
Fort Bend county and joining the line of
Harris Co - I ran a con- line from the
first old titled league in Harris Co - to
the East corner of Thos Habermaker 1/2 league
in Fort Bend Co - which has several former
Certificates of con- with old titled leagues
(both N. & S.) on the Brazos River placed in your
office by me which I place on this Sketch
for your convenience which will be represented
in Blue & yellow lines

Also having been applied to by the Heirs of Benj Orsburn Cut - No 466 - to correct its Survey (of which you will find 3. & one perfect page in your office) also having been applied to by Mordoc Bros & Anderson for Survey & Location of Vacancy North of said Orsburn. But having been applied to by Jael M^cCrory purchaser under act - approved 6 - Apr 1881. of No 4. State Free School, and Thos Hunter for Resurvey & correction of No 12. State School joining No 4.

I ran first a con-line from the South cor of Thos Abernethy $\frac{1}{2}$ league S-W. 352.41 rods to the South corner of Brooks & Burlison No 11. Thence S^e 1627. rods - Thence W^e 241. rods to a Post-Oak post set at the well known N.E. corner of the Knight & White league, & then measured W. on its North line at 450. a mulberry Post set at S-E. corner of James Perry labor at 2950. a mulberry post set at the N-W. corner of Knight & White & N-E. corner of Sam^l Isaacs league and at 2151 rods more being 5101 in all on Iron placed in the ground at Isaacs league N-E. corner & the S.W. corner of E.P. Whitehead $\frac{1}{4}$ league Thence N^e on line between Whitehead & W^m Ambrus league 1190. rods to a large Cedar post set at said Ambrus league - N-E. corner

(Note) 1st the South cor- of Thos Abernethy $\frac{1}{2}$ league is permanent and been perpetuated from its location (see former sketch)

2^d the N-E. cor- of Knight & White also the S-E. cor of Perry labor, are permanent corners as set by J.D. Latt Co - Sur - in 1876. (the line across the head of Knight & White also Isaacs being heavy Brass timber & easily

- 1 I identified from N-E. cor- of Isaacs S² to within
 2 100. rods of S-W. corner of said labor Also the ~~last~~
 3 East line of K & W. leo- from Brozas Run N-
 4 to N-W. cor of R Jones 1/2 leo- is Salit timber
 5 This makes Sully's last's work correct as I have
 6 tested it & find it O.K.
- 3- The corner of E.P. Whitehead & Perry labor, in the
 8 N. line of K & W. leo- is the crossing of two
 9 well marked timber lines being in Brozas bottom
 10 timber about 700. rods S² from prairie and twice
 11 run by me and gives the proper E. & W. distance
 12 for Perry labor & 450. rods S² for cor- of K & W. leo
- 4- The iron monument at N-W. corner of Isaacs was
 14 placed by me in 1887. (January) by running out
 15 the line between Anlins & said Isaacs & Isaacs
 16 head (a N. line) for accurately setting this cor- for
 17 corners of land
- 5- The center post set at N-E. cor- of Anlins league
 18 was placed there by Co-Sur- Y Ferris in
 19 the year 1878. (I have crossed this post on different
 20 Sully's & found it correct) See sketch & Report 1888, Oct 16,

22 This gives an accurate measure in length on E.P.
 23 Whitehead 1/4 leo- of 101. rods which I have tested
 24 & found to so have

25 Next I returned to the N-W. corner of the
 26 R. Jones 1/2 league. (This cor is well preserved & marked being
 27 at the top of the Brozas Bottom land bluff, "on the brow of the Post Oak
 28 prairie Ridge and is marked by a Mulberry post which is witnessed
 29 by deed "the first Sale made by Rowland Jones original Grantor",
 30 of 200. acres out of the N-E. cor- of his 1/2 leo- to Math Hunter dated at San-
 31 Felipe Dec 25th 1834. Beginning at his N.W. cor- a post from which a Post Oak
 32 tree 14 in dia- brs S-22^o-W 3.0 & a Spanish Oak 15 in dia- brs S-75^o-W-4.0)

33 This corner is well defined the P.O. still stands & well marked
 34 but 30. inches in diam- the Spanish Oak has fallen
 Counter 22942

But both lines are timber lines & crop here
 I measured from this corner N^o to the N-E. cor-
 of open soil K & W. Leo - out found it to measure
 1734. varas as placed on Sketch

This work so far described I finished March 22^d
 1890. for correction of open named State School
 lands Sec-4 & 12, also N^o 1. & A. I & G. N. Ry co -

But omitted orders from applicants to forward
 sketch & Notes of Corrections, but as this work
 has its connections with the lines since run by me
 I have seen fit to place it all on one Sketch

I next ran as above stated a cor line on
 application of Geo H. Evans, by
 commencing on the West line of the jail Weston
 Titled League (that being the first or nearest titled one) in
 Harris Co - on Buffalo Bogon" after first defining its
 lines and finding 54. varas between said West line &
 the East line of David Middleton patented league
 I commenced on the North bank at water edge of
 Buffalo Bogon and when the David Middleton
 crosses the same

Thence N^o at 190. & large gully at 200. entered prairie
 at 640. varas I measured W^o at 2812. varas
 intersected the West line of Middleton & well &
 old marked line coming out of Buffalo Bogon
 timber -

Thence S^o on same line 740. varas to the N-E.
 cor- of J Cunningham which is 403. varas N^o
 from center of Buffalo Bogon -

Thence W^o on line between said Cunningham
 and J. N. O. Smith at 3491. varas intersect a
 wire fence on East line of H. T. & B. Survey N^o 1.

Thence S^o at 784. & a crop fence claimed for J

1 Habermaker Survey N. line; at 1594 varas the
 2 corner of Wm C. Sykes in the South Edge of a very
 3 large Persimmon pond out at 2540 varas
 4 I entered timber out continued in timber 1150. varas
 5 on a well & old marked line out at 3690. varas
 6 in all & Buffalo Began & at 5122 varas S.W.
 7 corner of Jesse Sitten Survey
 8 Thence W^o at 908. varas & Buffalo Began
 9 on a well & very old marked line (i.e. 50° N. on the
 10 E. line) out at 2939. varas crossed West line of John
 11 Brack when I set stake & turned S^o on Bracks West
 12 line at 1231. varas & Buffalo Began on a well marked
 13 line continued S^o out at 630. varas more on Iron for
 14 the S-E. cor- of H. E. Looney from which two very
 15 large & old Post Oak both springing from same
 16 stump out no other Post Oaks near but one lone tree
 17 in prairie one deposed by fire but not so as to obliterate
 18 marks out both marked on west side thus
 19 I. (very old & very plain) bear from Iron stake S-37¹/₂ E. 131. varas
 20 I continued S^o 969. varas farther to a Mulberry post &
 21 Rock it being 2830 v in all - I next measured
 22 E. 2160. on Bracks South line out & Long Point
 23 Creek in heavy old timber on well marked line
 24 I returned to stake set on John Brack West
 25 line out continued W^o out at 4191. v from
 26 Sitten S-W. cor- I intersected East line of
 27 John Martin out measured S^o on same 527.
 28 varas to Buffalo Began on a well marked timber line
 29 I returned to 4191. v measure & continued W^o out
 30 at 6351. varas in all from Sitten S-W. cor I
 31 measured S^o 5 varas to a Mulberry post set at
 32 Thos Habermaker East corner from which a
 33 Post Oak 14 in. $\frac{1}{2}$ bears S-47¹/₂ W. 54³/₅ varas and
 34 a Post oak 9¹/₂ x bears S-52¹/₂ W. 54³/₅ v (These trees on the
 N. of the other they S. ones of a small clump of 5 Post oaks at edge of prairie)

(Note) This makes Millerton 76^m short in width Westings
 + J Cunningham 9^m short in length ---
 + J Brock own measure in Westings 65.^m
 + H E Loony - - - - - 2.^m

1st I find on line running from Sitten S-W. corner
 W^o 908^m to Bgon on other line 55. varas which
 is with out doubt the North line of Brock as
 everything proves this to be so

2^d H. E. Loony rec'd to begin 660 varas South from
 x of Buffalo Bgon. The line is very plain
 and the bearing of the 2 P.O. trees puts the cor-
 in this line but the distance is only 630^m from
 North bank of Bgon and twice measured

The S-W. corner trees have been
 destroyed and no trace left

3^d The call for West line to cross Bgon is
 erroneous as every test put to it places that
 corner only 56. varas North across Bgon
 the timber & prairie line is very well defined
 and this corner calls for an Elm 40 varas
 N^o for bearing tree if you go as far as
 field notes call it would place this corner
 in prairie hence it must stop where I have
 placed it to have a bearing tree on course
 40. varas more also measure place it here

hence I place N-W. cor of Brock 1287. varas N^o from
 Bgon and

H E Loony N-E. cor - 815. varas North from Bgon
 and 471. varas South from ~~Brock~~ N-W. cor -
 and N-W. cor of Loony 56. varas North from
 Bgon and 939. varas S^o from John Mather
 N-E. corner

This line was surveyed from Nov-1st to 6th 1880
 for correction of C. I & G. N. Ry Co Survey East

from the Habermakus

I next ran a con-line on application of
 Atty for Heirs of Benj Osborn out application
 for location of Og Hunt & Cattle Co cut-
 No 61. by Medden Bros & Amberson
 This line I ran by
 Commencing at the afore described N-W. cor-
 of the R Jones $\frac{1}{2}$ league at a Mulberry post
 from which a Post Oak tree now 30. inches
 in diameter and marked with three old
 blocks & a blaze on four sides bears S- 22°
 W. 3. vars - Thence E^o on said R Jones
 N. line at about 500. vars left timber
 at 1600. vars its N-E. corner & N-W. corner
 of Wm Morton $\frac{1}{2}$ league at 1900. vars
 pass the S-W. corner of John Fredericks
 South Survey out at 3800. vars a post
 set for the S-E. corner of said Fredericks
 Thence I turned North with the East line
 of the two John Fredericks Surveys out at
 1900. vars a large Mulberry post set at
 the N-E. corner of Fredericks North Survey
 out at 1728. vars farther making 5528.
 vars in all I intersected the South
 line of afore said John Brock Survey
 160. vars East from the Mulberry post
 & Rock which I described as forming its
 S-W. corner in line run from Nov 1- to 6- 1890
 This places the John Brock $\frac{1}{3}$ league S-W. cor-
 160. vars W. & 1728. vars N. from John
 Fredericks North Survey N-E. corner
 Next I returned to post set at the S-W. corner
 of Fredericks South Survey out 3800. vars E^o
 from N-W. corner of R Jones $\frac{1}{2}$ league

Foot Bond on St. File #18

and continued my measure of 8800 on
 E^o on North line of W^m Morton out at
 4941. varas I intersected Morton's N-E.
 corner in the East line of A. M. Clapper
 and measured S^o-644 varas to a stake
 set for the N-E. corner of James Wilkins
 League Survey.

Next I returned to Morton N-E. cor- and
 continued E^o out at 7231. varas from
 first Beginning (R. James N.W. cor) I intersected
 the West line of very plain, old, & well
 marked line, "The West line of the Jesse Cartwright
 right league -

I measured S^o-642 varas to a cedar post set
 for the N-E. corner of James Wilkins League by
 State Survey of the State Surveyor James & Supt
 Garce

I returned to my intersection at end of 7231. varas
 measure and measured N^o on Jesse Cartwright
 West line 275. varas to an other cedar stake
 set by Surveyor J. Finis for N-W. corner of Jesse
 Cartwright League. Thence E^o on Cartwright
 North line 2260. varas to the intersection
 of the line coming out from the Bessas timber
 which divides the Cartwright & the M M Battle
 Leagues -

Thence I measured N^o-1866. varas to the South
 line of James M^c Donald 480. acre Survey
 Thence W^o on its South line 1588. varas to
 a stake set for its S-W. corner

This makes the R James 1/2 leo- own measure 10000
 + Morton 1/2 leo- half out even
 + the James Wilkins league own measure — 4000
 + Jesse Cartwright own measure ————— 11000
2500

Ca¹

out places the zone Wilkins N-W. cor 644. was
South from N-E. corner of W^m Mott
out Jesse Cartwright N-W. cor-917. was N^e
from zone Wilkins N-E. corner

(Note) making a gain in Easting on Brozos Survey of 250
was from R zone N-W cor-8^e to Jesse Cartwright
N-E. corner. out N.E. cor of R zone is nearly
due South from E. corner of Thos Habermaker
out the Buffalo Bayou Survey lead from
Thos Habermaker E. cor- 8^e to Jell Wheaton 18. n
This last described line is for correction of
Benjamin Orsburn 1/3 league out location of
vacancy (85 1/4^e) North of Orsburn as applied
for by Madelon Bras & Amberson

I have also placed on this sketch in red
ink a connection from South corner of D A
Connor 320. acre Survey 8^e & N^e to County
corner which corner is well known by
me — From S. corner of corner 8^e 1046^m
Thence N^e 36 87. was is the proper measure
out both points are well known by me. I
might slip a little in locating of Crawford
from State Surveyor West But I consulted
the old veteran who has lived in this Co-
since before his capture as a Miss person
his name was Thos Smith he lived on and
built the house and run the Stage Stand in
early days on the J. J. Crawford Survey.
he died at George Town Williamson Co-
while on a visit; was brought here & buried
last summer; as we slip in this point I
make this explanation; also say that I
have tested its field notes & find them
to fit very closely — I have also placed
counter 22948

Dist changed to 2697 on State
Aug. 15/92

Fort Bond Co. S. A. F. 10 #15

lines in green ink on this sketch which were run by me in Oct-1888 also in yellow which were run in 1890 thinking that they may assist in this connection as they all affect points & ties between different counties &c.

I S. M. Fane County Surveyor of Fort Bend County do here by certify that all connections and lines herein contained and described were actually surveyed upon the ground by me and that all statements herein are true and correct; and that all the lines as well as locations truly represent the locations and their connections as placed on this accompanying sketch

Richmond Texas
Dec 24 1890

S. M. Fane County Surveyor
of Fort Bend County

~~75~~

18

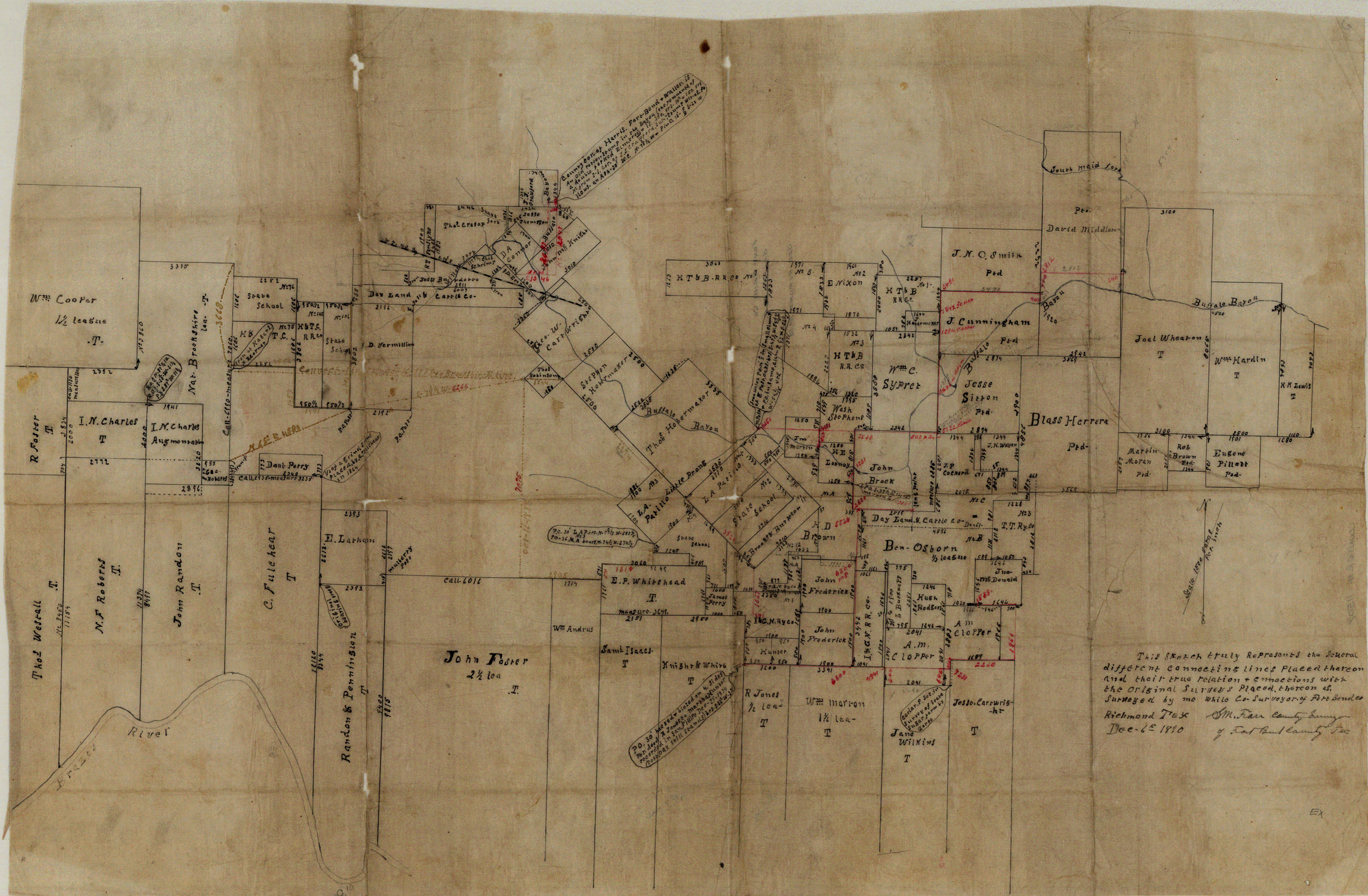
Fort Bend Co

SEE SK. 18 A.

counter 22950

Ca 11

1 2 3 4 5 6 7 8 9 10 11 12 13 14 15 16 17 18 19 20 21 22 23 24 25 26 27 28 29 30 31 32 33 34



County Box of Harris, Fort-Bend + Waller. Is
 An old map showing the Bayou (the remains of
 a divide of rock) in the center of the map. It is
 a copy of a map of the County of Harris, Waller &
 Fort Bend, Texas, made by J. C. Williams, Surveyor
 Nov. 21, 1854. It is a copy of a map of the County
 of Harris, Waller & Fort Bend, Texas, made by
 J. C. Williams, Surveyor, Nov. 21, 1854.

PO. 30 1/2 A.P.M. N. 7 1/2 W. 28 1/2
 PO. 31 M.A. 1/2 W. 3 1/2 W. 27 1/2

This sketch truly represents the several
 different connecting lines placed thereon
 and their true relation + connections with
 the original surveys placed thereon as
 surveyed by me while Co-Surveyor of Fort Bend Co.
 Richmond Tex
 Dec-6th 1880
 S.M. Fair County Surveyor
 of Fort Bend County Tex