

Austin, Texas, December 9, 1910

J.T. Robison, Commissioner General Land Office,
Austin, Texas.

Dear Sir:-

In accordance with your instructions issued to me on Dec. 6, 1910, to go upon the ground and investigate so as to determine whether there is a school land strip east of the Gabriel Cole $\frac{3}{4}$ league and west of the P.H. Stein surveys in Ft. Bend County, I beg to report as follows:-

I went to the South or lower corner of the Isaac McGary league, a large cypress stump on North bank of the San Bernard, no bearings standing. Gee Menev a negro man, told me that he often saw this tree when standing, and that it was marked EP, and that others in that locality saw the tree when it was standing. I then ran N 58° 45' E along the league line as improved, at 582 varas N bank of slough, at 5557.5 varas crossed Turkey Creek, 5873.5 varas to a point A. (See map) whence two post oaks bear S. 8E 68 varas, upper end of clump of trees on Snake Creek bears N 46 E. These trees fit original calls. The two post oaks stand close together and are about 16 inches in diameter. No other post oaks are near except one large post oak about S70 W. about 200 varas, and a stump of a large post oak that forked to ground which stands nearly north about 150 varas. This tree is down. I went to the west or upper corner of the Isaac McGary league to a corner pointed out as the corner that Surveyors always go to, by old Tom Roberts, an old negro who owns land out of the Mc Cormick league. Roberts says that when his land was surveyed a great many years ago, the Surveyor started at this corner. A pig nut tree was standing and was marked (called a pecan in the field notes) This corner is on the bank of the San Bernard whence a large Cypress bears S 75 W 12 varas. This tree shows old marks, but they are so worn by age that I could not tell what the marks were. Roberts says it showed to be marked M. when they surveyed from it over 20 years ago. So far as I know there is no dispute as to this corner.

I then ran N. 59 E (on variation of 8° 26' E) along the N.W. line of the McGary as recognized, 4690 varas to a point for N E. corner of the McGary league, designated as B on sketch. Thence S 65 E at 4792 varas crossed Turkey Creek 5130 varas to point A at S E corner of the McGary league point A. A piece of rail road iron stands N. 58 $\frac{3}{4}$ ° E 780 varas from A and a piece of iron axle stands 1290. varas N 58 $\frac{3}{4}$ ° E from A corner of fence is 10.6 varas S 58 $\frac{3}{4}$ ° W of the iron axle. The iron axle is said to have been placed by Schley, and is South ^{rail} east corner of the Stein survey. The piece of iron rail-road is said to have been set by Schley for N E corner of the E Powell survey.

Began at point B (see map) at N or N E corner of the McGary league, as placed 4690 varas N 59 E of its west or N.W. cor. Thence N 59 E 1025.7 varas to a piece of iron rail road ^{at} about middle of S. end of a land, at recognized E. corner of the James M. Mc Cormick survey. Thence N 31 W (on variation 8:26 E) passing several iron pipes at subdivision corners, at 3903 varas, found no corner, measured S 60 W 2120 varas to a flat drain. The Mc Cormick field notes call for this distance to be S 60 W 1990 varas. Continued along E line of Jas. Powell survey in all 6650 varas to an iron stake at North or N E corner of said Powell survey also the N W corner of the G Cole survey. Thence S 58° 45' W along N.W. line of the Jas Powell survey, at 1840 varas entered bottom, several hickory trees are marked along line in bottom (old marks) continued on same course at 2158 varas to an elm 24 inches marked X (old) on bank of San Bernard. While this corner cannot be fully identified as original it is not disputed.

Began at iron stake at North corner of Jos Powell survey. Thence N. 89 E. along lane 1872 varas to a piece of rail road iron at corner of Stein survey in land. Thence N 89 E 487 varas point on line with old fence. Thence N 89 E 1444 varas, point at middle of lane. Thence N. 1 W. 214 varas point in lane on line with fence. Thence N. 88:30 E with fence at 790 varas Turkey Creek 1166.5 varas to old Mulberry stake at Schley's old S. E. corner of the H. C. Taylor's survey, whence Turkey Mett bears N 62½ W. There is also an iron pipe beside the old stake, also a large stake not very old. The point marked C on map is 500 varas N 58:45 E from the point A near the two post oaks, and is 280 varas S 58: 45W from the piece of iron rail road rail at north corner of the Powell survey by Schley.

The Gabriel Cole survey begins at the N. E. corner of the Jos Powell survey, and a corner of A Northington, and calls to be distant N. 60 E. 2150 varas from the river Bernard. I find this survey distance to be 2158 varas, which is a good fit for an old survey. The call is next E. 1862 varas. There is a pipe at 1872 varas. D on map is 10 varas S 89 W of the pipe. The next call is S 36½ E 10000 varas to mound. Thence S 60 W 500 varas to N. E. corner of E. Powell and S. E. corner of Isaac Mc Gary survey. If we place the S. E. corner of the Mc Gary at point A, near the two post oaks which is a course and distance corner from S. W. corner of said Mc Gary survey and if we place the S. W. corner of the Cole 500 varas N 60 E of this corner by reversing the Cole call, then we would have to connect this point which is marked C on map with the point D by a straight line for E line of the Cole survey. The course of this line, I estimate to be S 35: 11 E. The Cole field notes call for S 36½ E. To connect these points, we will have to change the course from S 36: 30 E to S. 35: 11 E. The effect of this would be to squeeze the Cole and narrow it down less than it should be. The width of the Cole across N 59 E from S E corner of the Mc Cormick should be 2260 varas (see map)

This distance I estimate to be 2030 varas if we go to line connecting points D and C. The east line of the J. M. Mc Cormick and Joseph Powell is on ground N 31 W - it calls N 30 W. If this line was changed to N 30 W it would relieve the Cole to the extent of one degree. If we should place the S E corner of the McCormick at point E (see map) which is 725 varas N 59 E from B. and 5415 varas N. 59 E. from the old S. W. corner or lower corner of the Mc Cormick, the Cole will fit in exactly so as to fit original calls except a slight change in course of two of its lines, and it would have its correct area. The E line of the Mc Cormick and Joseph Powell would be at a course of N 28:25 W. The N. E. corner of the Mc Cormick would move S 60 W 125 varas to a line connecting north corner of Joseph Powell with course and distance S. E. corner of J. M. Mc Cormick at point E.

There is one thing that strongly supports this position. The Mc Cormick in its calls from the its N. corner S 60 W crosses a gully at 1990 varas. From present position from N E corner of the McCormick this gully is 2120 varas. If the corner be placed at F, which is on line connecting the N corner of the Jos Powell survey, and point E., the distance to the gully will be 1995 varas. These old leagues have so few land marks remaining that it is almost impossible to tell what variation to use, and they have been surveyed carelessly and no uniform variation has been used. Some lines differ a whole degree or more from courses given in original field notes. The upper end of the Cole has been subdivided and corners set and fences built for several years. Also, the Jos. Powell the Mc Cormick and Mc Gary leagues.

I believe that if the Jos Powell, Gabriel Cole, Isaac McGary and Mc Cormick had been correctly surveyed, that the Cole East line would fall about as shown by line connecting points D. and C, which would leave a wedge shaped vacancy between the Cole and Stein surveys, unless the Cole could hold this strip by a strict adherence to its calls, S 36:30 E, and making distance yield to course at the call at S. end, where the call is S. 60 W. 500 varas to the Mc Gary S. E. corner. On this point I have some doubts: course might govern over distance. If we make course govern the east line of the Cole, that is to say, run S 36½ E from its N. E. corner at D, and if we run to parallel Schleys works we will leave a strip 10 varas wide between the Cole and Stine surveys: but if we run at the variation of one degree less than Schley used, which would be about 8:26 which is about the correct variation for the old surveys on San Bernard, we will strike at G, which is 39.4 varas S. 58:45 W of the iron rail at Schley's North corner of the E. Powell. By this construction, we leave a triangular strip 10 varas wide at N. end, and 163 vrs wide at S. end which would be vacant land lying between the Stein and Cole survry. This strip will contain 153.2 acres, less what would be taken up by the Cole labor when moved west to new position of the Cole $\frac{3}{4}$ league which would be 20.5 acres. The Cole south line would be 740.6 varas long instead of 500 varas if east line is run so as to connect points D and G.

GEO M. Williams

Special State Surveyor.

Fort Bend County

Gabriel Cole .& P H Stein Surs.

Report of G M Williams Special State Sur.

(See Plat accompanying this)

Filed in Genl Land Office Dec 9, 1910.

J T Robison Commissioner. (See File S259, Ft Bend for cert. of appointment)

- Sketch -
 Fort Bend County.
 Gabriel Cole & P. A. Stein Sur.
 by
 Geo. M. Williams
 State Surveyor.
 Filed Dec. 9 1910.

For certificate of appoint-
 -ment as Special State
 Surveyor See Fort Bend
 S. 259. Phil H. Stein.

Austin, Texas, December 9, 1910.

J. T. Robison, Commissioner General Land Office,
Austin, Texas.

Dear Sir:

In accordance with your instructions issued to me on Dec. 6, 1910 to go upon the ground and investigate so as to determine whether there is a school land strip east of the Gabriel Cole $\frac{3}{4}$ League and the P.H. Stein surveys in Ft. Bend County, I beg to report as follows:-

I went to the south or lower corner of the Isaac McGary league, a large cypress stump on north bank of the San Benard, no bearings standing. Geo. Money, a negro man, told me that he often saw this tree when standing, and that it was marked E.P., and that others in that locality saw the tree when it was standing. I then ran N. 58: 45' E along the league line as improved, at 582 varas N. bank of slough, at 5557.5 varas crossed Turkey Creek, 5873.5 varas to point A. (see Map) whence two post oaks bear S. 8 E. 68 varas, upper end of clump of trees on Snake creek bears N. 46 E. These trees fit original calls. The two post oaks stand close together and are about 16 inches in diameter. No other post oaks are near except one large post oak about S 70 W. about 200 varas, and a stump of a large post oak that forked to ground which stands nearly north about 150 varas. This tree is down. I went to the west or upper corner of the Isaac McGary league to a corner pointed out as the corner that Surveyors always go to, by old Tom Roberts, an old negro who owns land out of the McCormick league. Roberts says that when his land was surveyed a great many years ago, the Surveyor started at this corner. A pig nut tree was standing and was marked (called a pecan in the field notes). This corner is on the bank of the San Bernard whence a large Cypress bears S. 75 W. 12 varas. This tree shows old marks, but they are so worn by age that I could not tell what the marks were. Roberts says it showed to be marked M. when they surveyed from it over 20 years ago. So far as I know there is no dispute as to this corner.

I then ran N. 59 E. (on variation of 8; 26E) along the N. W. line of the McGary as recognized, 4690 varas to a point for N. E. corner of the McGary league, designated as B. on sketch. Thence S. 65 E. at 4792 varas crossed Turkey Creek, 5130 varas to point A. at S. E. corner of the McGary league - point A. A piece of rail road iron stands N. 58 $\frac{3}{4}$ E. 780 varas from A., and a piece of iron axle stands 1290.0 varas N. 58 $\frac{3}{4}$ E. from A.; corner of fence is 10.6 varas S. 58 $\frac{3}{4}$ W. of the iron axle. The iron axle is said to have been placed by Schley, and is South east corner of the Stein survey. The piece of iron rail-road rail is said to have been set by Schley for N. E. corner of the E. Powell survey.

Began at point B. (see map) at N. or N. E. corner of the McGary league, as placed 4690 varas N. 59 E. of its West or N. W. cor. Thence N. 59 E. 1025.7 varas to a piece of iron rail road rail at about middle of S. end of a lane, at recognized E. corner of the James M. McCormick survey. Thence N. 31 W. (on variation, 8:26 E.) passing several iron pipes at subdivisions corners, at 3903 varas, found no corner; measured S 60 W. 2120 varas to a flat drain, The McCormick field notes call for this distance to be S. 60 W. 1990 varas. Continued along E. line of Jos. Powell survey in all 6650 varas to an iron stake at north or N. E. corner of said Powell survey, also the N. W. corner of the G. Cole survey. Thence S. 58: 45 W. along N. W. line of the Jos. Powell survey, at 1840 varas entered bottom. Several Hickory trees are marked along line in bottom (old marks). Continued on same course at 2158 varas to an Elm 24 inches marked X (old) on bank of San Bernard. While this corner can not be fully identified as original it is not disputed.

Began at iron stake at North corner of Jos. Powell survey. Thence N. 89 E. along lane 1872 varas to a piece of rail road iron at corner of Stein survey in lane. Thence N 89 E. 487 varas, point on line with old fence. Thence N. 89 E. 1444 varas, point at middle of lane. Thence N. 1 W. 214 varas point in lane on line with fence. Thence N 88:30 E. with fence at 790 varas, Turkey Creek, 1166.5 varas to old Mulberry stake at Schley's old S. E. corner of the H. C. Taylor survey, whence Turkey Mott bears N. 62 $\frac{1}{2}$ W. There is also an iron pipe beside the old stake, also a large stake not very old. The point marked C on map is 500 varas N. 58:45 E. from the point A. near the two post oaks, and is 280 varas S. 58:45 W. from the piece of iron rail road rail

at north corner of the Powell survey by Schley.

The Gabriel Cole survey begins at the N. E. corner of the Jos. Powell survey, and a corner of A. Northington, and calls to be distant N. 60 E. 2150 varas from the river Bernard. I find this distance to be 2158 varas, which is a good fit for an old survey. The call is next E. 1862 varas. There is a pipe at 1872 varas. D on map is 10 varas S. 89 W. of the pipe. The next call is S. 36 $\frac{1}{2}$ E 10000 varas to mound. Thence S. 60 W. 500 varas to N. E. corner of E. Powell and S. E. corner of Isaac McGary survey. If we place the S.E. corner of the McGary at point A. near the two post oaks which is a course and distance corner from S.W. corner of said McGary survey and if we place the S.W. corner of the Cole 500 varas N. 60 E. of this corner by ~~xxx~~ reversing the Cole call, then we would have to connect ~~xxxx~~ this point which is marked C on map with the point D by a straight line for E. line of the Cole survey. The course of this line, I estimate to be S 35:11 E. ~~xxxx~~ The Cole field notes call for S 36 $\frac{1}{2}$ E. To connect these points, we will have to change the course from S. 36:30E. to S.35:11 E. The effect of this would be to squeeze the Cole and narrow it down less than it should be. The width of the Cole across N. 59 E from S. E. corner of the McCormick should be 2260 varas (see map). This distance I estimate to be 2030 varas if we go to line connecting points D and C. The East line of the J. M. McCormick and Joseph Powell is on ground N. 31 W. - it calls N. 30 W. If this line was changed to N. 30 W. it would relieve the Cole to the extent of one degree. If we should place the S. E. corner of the Mc Cormick at point E. (see map) which is 725 varas N. 59 E. from B., and 5415 varas N. 59 E. from the old S. W. or lower corner of the Mc Cormick, the Cole will fit in exactly so as to fit original calls except a slight change in course of two of its lines, and it would t have its correct area. The E. line of the McCormick and Joseph Powell would be at a course of N. 28: 25 W. The N. E. corner of the Mc Cormick would move S. 60 W. 125 varas to a line connecting north corner of Joseph Powell with course and distance S. E. corner of J. M. McCormick at point E.

There is one thing that strongly supports this position. The McCormick in its calls from its N. corner S. 60 W. crosses a gully at 1990 varas. From present position from N. E. corner of the Mc Cormick this gully is 2120 varas. If the corner be placed at F. which is on line connecting the N. corner of the Jos. Powell survey, and point E., the distance to the gully will be 1995 varas. These old leagues have so few land marks remaining that it is almost impossible to tell what variation to use, and they have been surveyed carelessly and no uniform variation has been used. Some lines differ a whole degree or more from courses given in original field notes. The upper end of the Cole has been subdivided and corners set, and fences built for several years. Also, the Jos. Powell, the McCormick and McGary leagues.

I believe that if the Jos. Powell, Gabriel Cole, Isaac McGary and McCormick had been correctly surveyed, that the Cole east line would fall about as shown by line connecting points D. and C., which wuld leave a wedge shaped vacancy between the Cole and Stein surveys, unless the Cole could hold this strip by a strict adherence to its call, S. 36:30 E., and making distance yield to course at the call on S. end, where the call is S. 60 W. 500 varas to the McGary S.E. corner. On this point I have some doubts; course might govern over distance. If we make course govern the East Line of the Cole, that is to say, run S. 36 $\frac{1}{2}$ E. from its N. E. corner at D., and if we run to parallel Schley's work we will leave a strip 10 varas wide between the Cole and the Stein surveys; but if we run at the variation of one degree less than Schley used, which would be about 8:26, which is about the correct variation for the old surveys on San Bernard, we will strike at G., which is 39.4 varas S. 58:45 W. of the iron rail at Schley's North corner of the E. Powell. By this construction, we leave a triangular strip 10 varas wide at N. end, and 163 vrs. wide at S. end, which would be vacant land lying between the Stein and Cole surveys. This strip will contain 153.2 acres, less what would be taken up by the Cole labor when moved West to new position of the Cole $\frac{3}{4}$ league which would be 20.5 acres. The Cole south line would be 740.6 varas long instead of 500 varas if east line is run so as to connect points D. and G.

Geo. M. Williams

SPECIAL STATE SURVEYOR

Zd'

Counter 22984

Counter 22985

Handwritten notes at the top of the page, including a date and some illegible text.

Handwritten notes in the middle section of the page, continuing the text.

Handwritten notes in the lower middle section of the page.

Handwritten notes in the bottom section of the page.

28
Tarrant County
Gabriel Cole & P.H. Stein Surs.

Report of Geo. M. Williams
Special State Sur.
See plat accompanying this.

Filed in Land Office
December 9, 1901.

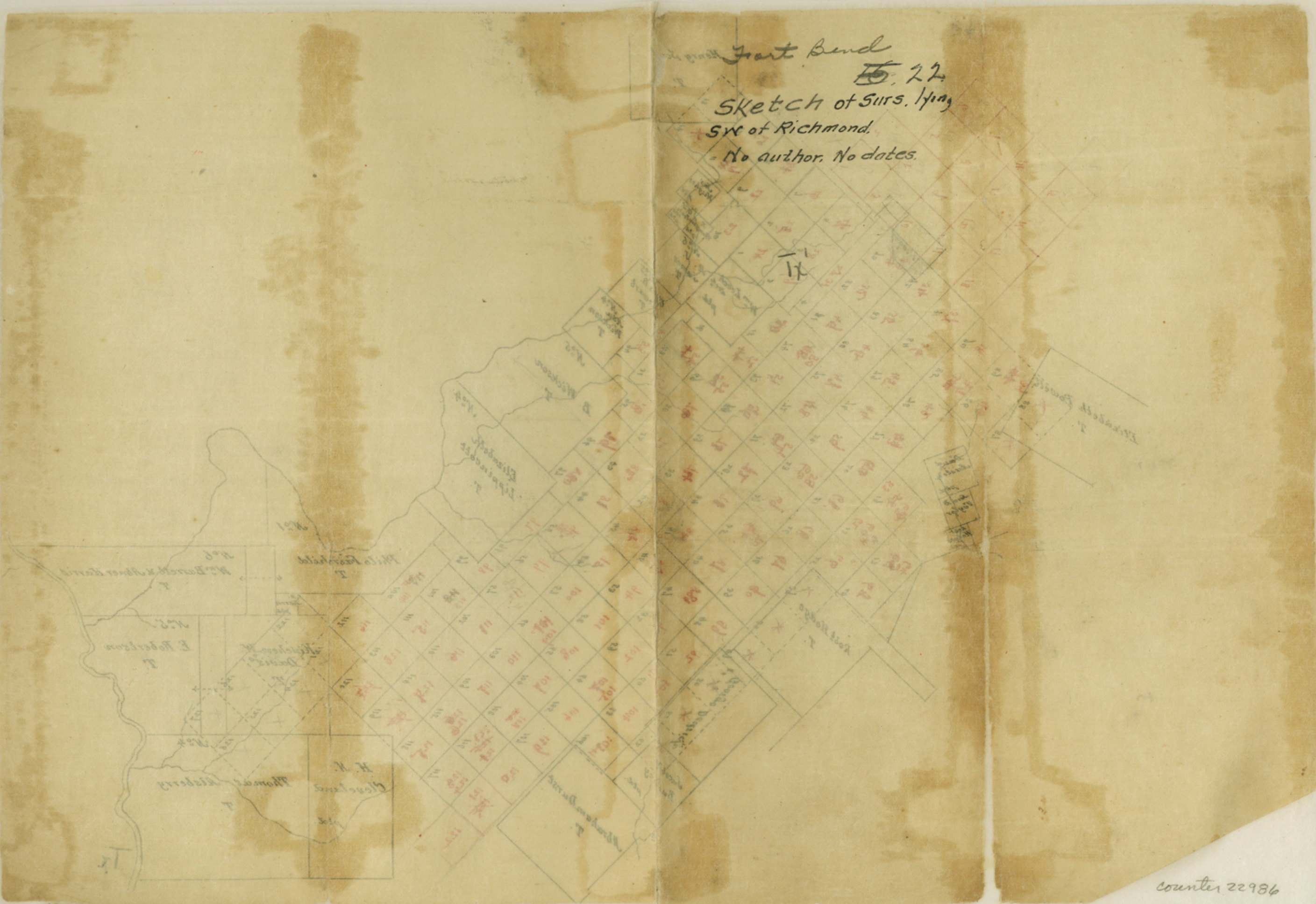
G. Robinson
Commissioner

See file S-259 Tarrant
for cert. of appointment

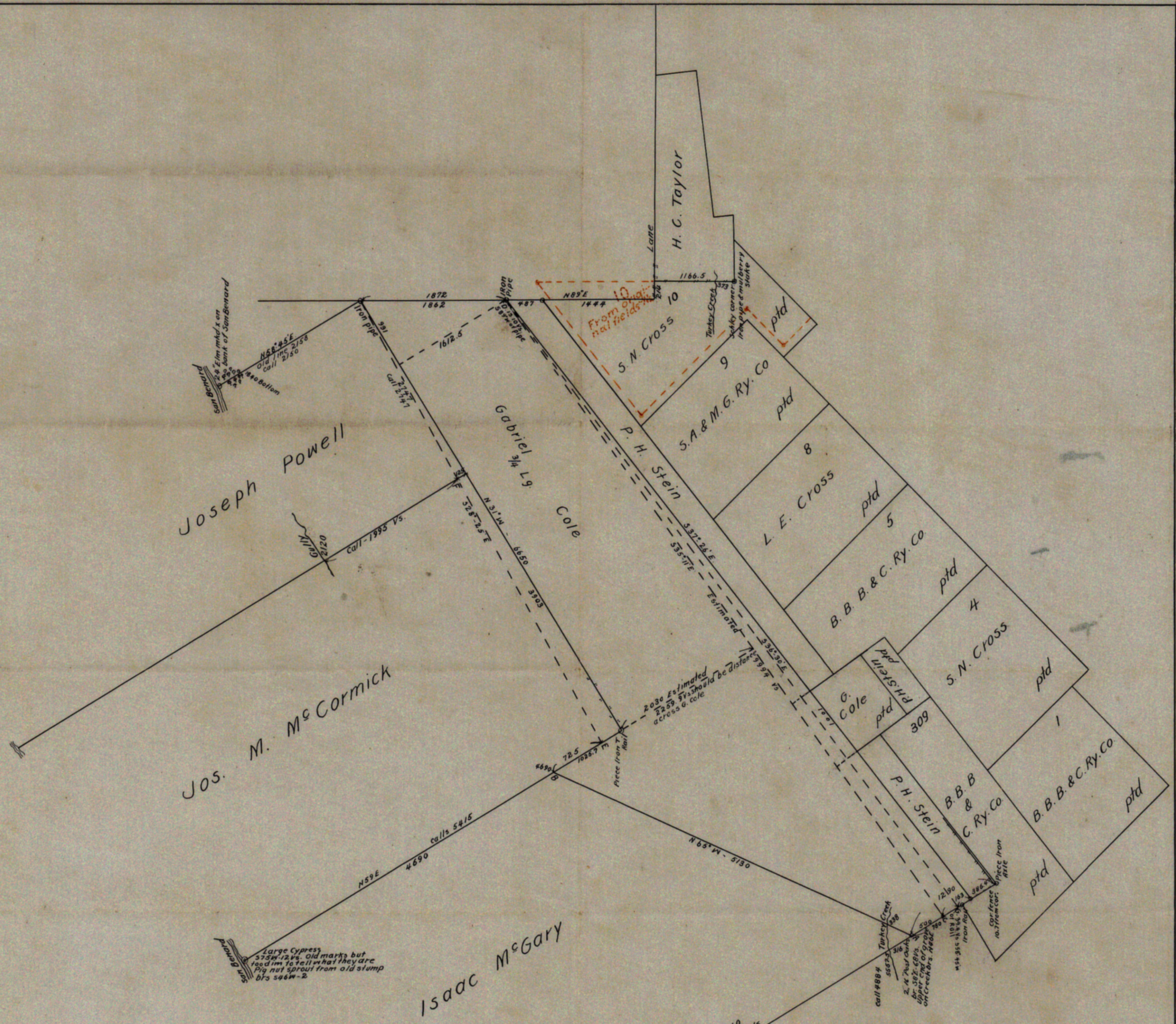


48PSS nitro

Front Bend
5. 22
Sketch of Surs. lying
SW of Richmond.
No author. No dates.



28 of 1910



SKETCH
 Showing the Isaac McGary, Jos. M. McCormick, Joseph Powell,
 Gabriel Cole, P.H. Stein and other surveys in Fort Bend County.

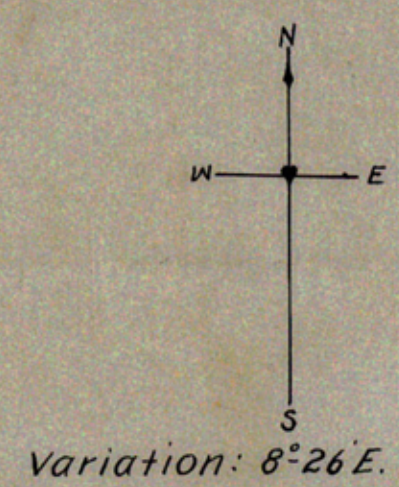
I, Geo. M. Williams, Special State Surveyor,
 do hereby certify that this is a true and correct
 sketch.

Given under my hand this
 Dec. 8th, 1910, Geo. M. Williams,
 Special State Surveyor.

Filed in General Land Office
 December 9th 1910,

J. T. Robinson
 Commissioner.

EXHIBIT-"A"
 Fort Bend County, Tex.



#28

See report accompanying this.

17211 #9574000