

File 4

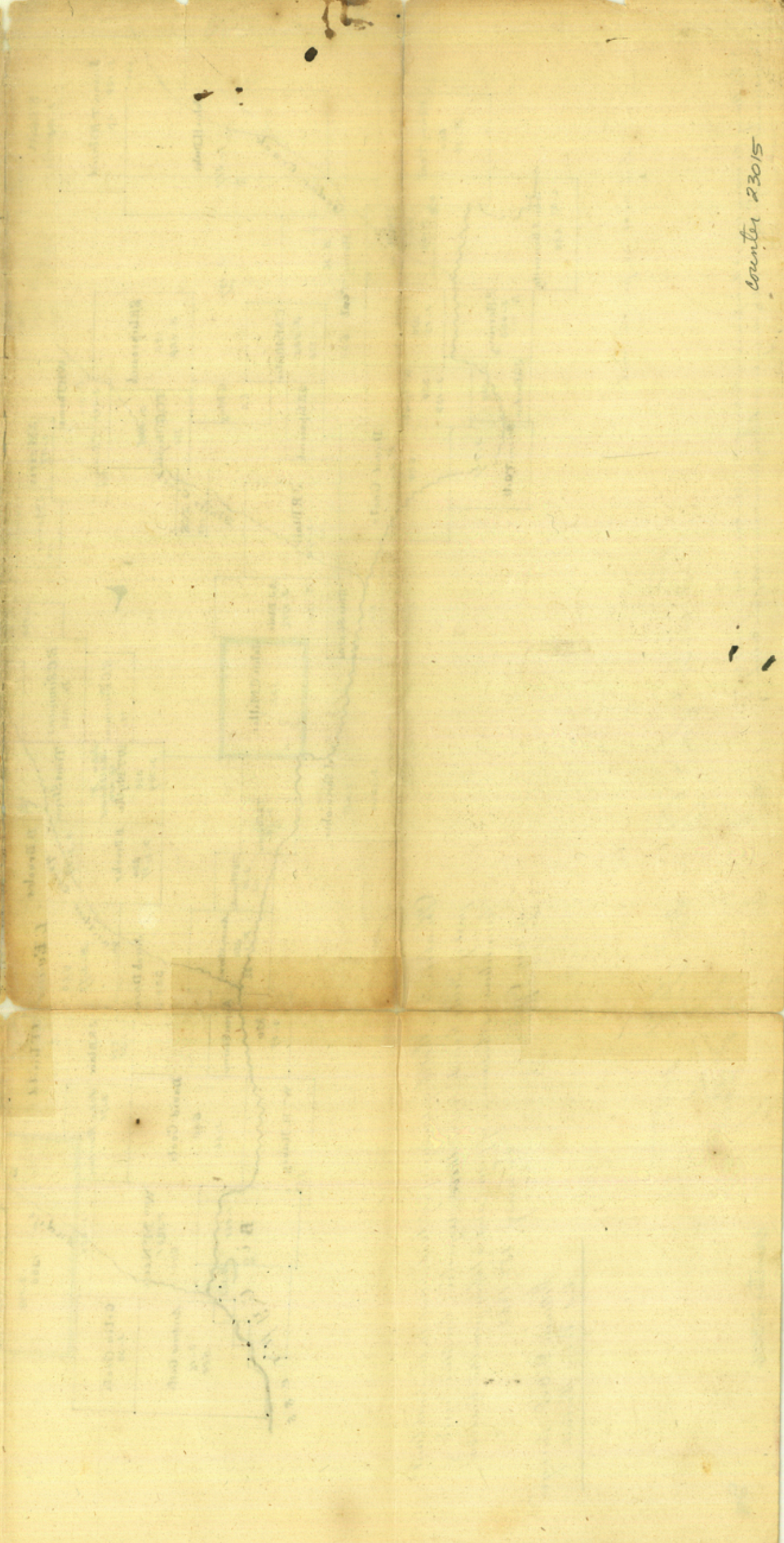
Franklin
Sitka County.

east of the of the line of Hopkins Co

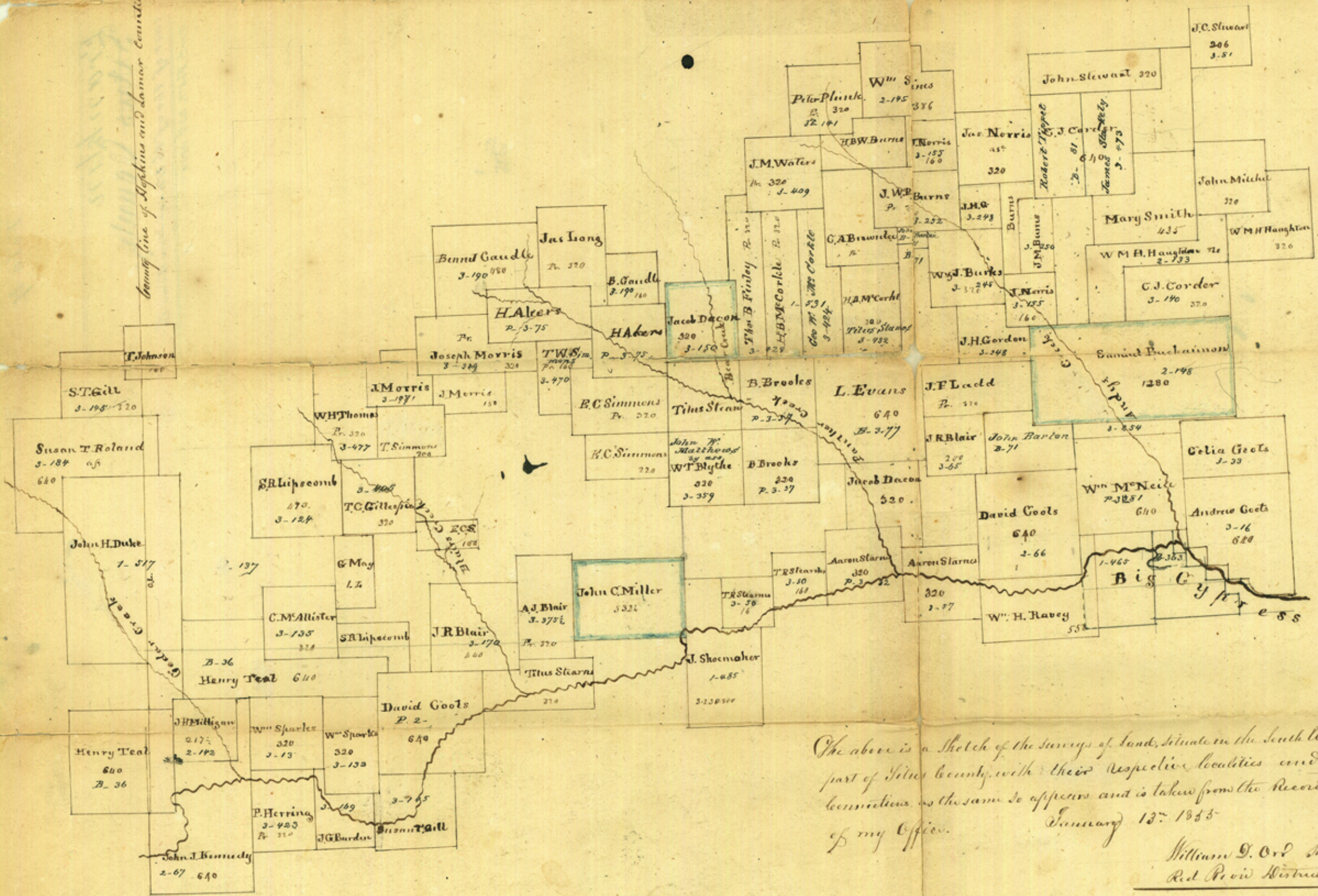
Rec'd Feb 7, 23rd 1858

51

counter 23015



Boundary line of Hopkins and Lamar Counties



The above is a sketch of the surveys of land, situated in the south west part of Titus County, with their respective localities and connections, as the same so appears and is taken from the Records of my Office.

January 13th 1855

William D. Ord Surveyor
Red River District

Scale 2000 yds. per inch

Read in Gal. Land Office. 23rd Feb. 1855
T. Ord

N.B. Among the many errors & discrepancies in the survey, the upper narrow tract, is found by measurement to be longer than the call & many errors both in previous names and plans occur.

counter 23014