

I Thos J Oliver District Surveyor
for Robertson District Certify
that the above sketch truly
represents the map in my
Office
Given under my hand
at Office

January 28th 1857
Thos. J. Oliver
Dist. Sur for
R. Wise

see 50^c

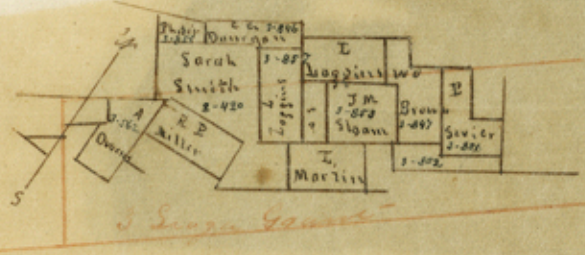
Feb 2nd 1857

Dear Sir

enclosed please
find a sketch showing the corner
between S. Loggins in Jackson
County & the estate

Resps yours

Thos. J. Oliver



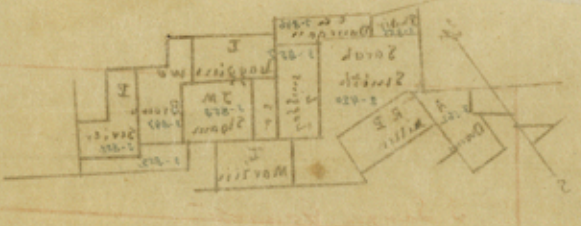
I Thos J Oliver District Surveyor for
Robertson District Certify that
the above sketch truly represents
the map in my Office

Given under my at Office
This January 27th 1857
Thos. J. Oliver
Dist. Sur for
R. Wise

see 50^c



I have been directed to certify
 for the above stated map
 the same being the map in my
 office
 W.L. Adams
 Surveyor



I have been directed to certify
 for the above stated map
 the same being the map in my
 office
 W.L. Adams
 Surveyor

Springfield Feb 22-1857
 J. Crossy Esqr Sr Sir

enclosed please

I certify a return showing the corner
 of the A. Howell W.A. Brown & S. Loggin in Jackson
 County which belongs to the estate
 of W.L. Adams

Respectfully yours

Wm. J. Oliver

H. file 1.
6

Freestone County

Rec^d March 19th 1857

One Oak Cr. and
Cedar Cr.

hos J. Oliver's sk of same
7 Oak & Cedar crks,
Dated Feb. 2, 1857
Filed Mar. 19, 1857

The Oliver
sketch.

county 23036

23036 N. 1000