

File No. 13
GAINES County
SKETCH FILE
Filed March 10 19 54
BASCOM GILES, COM'R
By [Signature]

Parts of P.S.L.
Blks. A-8, A-9 & A-11
By Sylvan Sanders
Feb. 27, 1954

89
79 File No. 20777
Plat
Lane Estate Ranch
The Public

RECORDED
COMPARED
INDEXED

FILED FOR RECORD
9 day of March A. D.
1954 at 10:00 o'clock P. M.
Chester D. Browne, County Clerk
Gaines County, Texas
By Mary E. Anderson

RECEIVED
MAR 18 1954
REFERRED TO SCHOOL

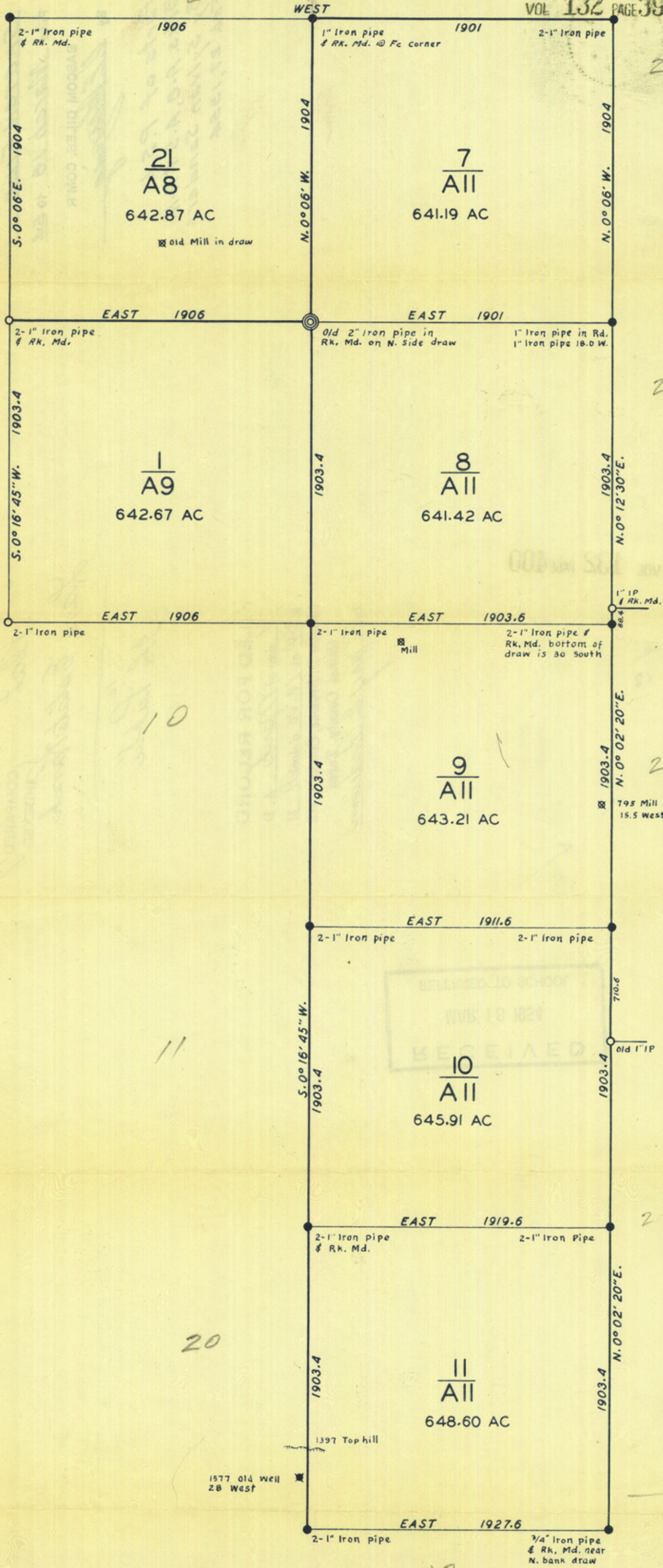
VOL 132 PAGE 400

Gaines County Plat Co

Counter 23200

THE STATE OF TEXAS }
County of Gaines } I, CHESTER D. BROWNE, Clerk of the County Court in and for said County, do hereby
certify that the foregoing Instrument dated the 27th day of Feb. A. D. 19 54 together
with its certificates of authentication was filed for record in my office the 9th day of March
A. D. 19 54, at 1 o'clock P. M. and duly recorded on the 9th day of March A. D. 19 54,
in Deed records of Gaines County, in volume 132 on page 399
WITNESS MY HAND AND OFFICIAL SEAL at my office in Seminole, Texas, the day and year
last above written.
CHESTER D. BROWNE, Clerk County Court, Gaines County, Texas
By: Mary E. Anderson Deputy
(L. S.)

0481



LANE ESTATE RANCH

GAINES COUNTY, TEXAS

I, SYLVAN SANDERS, Licensed State Land Surveyor, do hereby certify that the above plat is true and correct as surveyed by me upon the ground.

Sylvan Sanders
 Licensed State Land Surveyor



Scale: 1" to 600 varas Feb. 27, 1954

Counter 23201