

24.

Garza Co

Plots, letters, sketches, etc,  
relating to Jasper Hay's sur-  
veys in SW cor. of Garza Co.,  
on Double Mountain Fork of  
Brazos River.  
Sundry notes & Filings -

Dodge No. 24

Connection from the common  
survey of the R.R. Co. to  
the section corner

Filed in Genl.  
Land Office  
June 16/79,  
Rhaads Fisher  
Chf. Clerk

June 30  
Sketch file

11

Garrett Co.

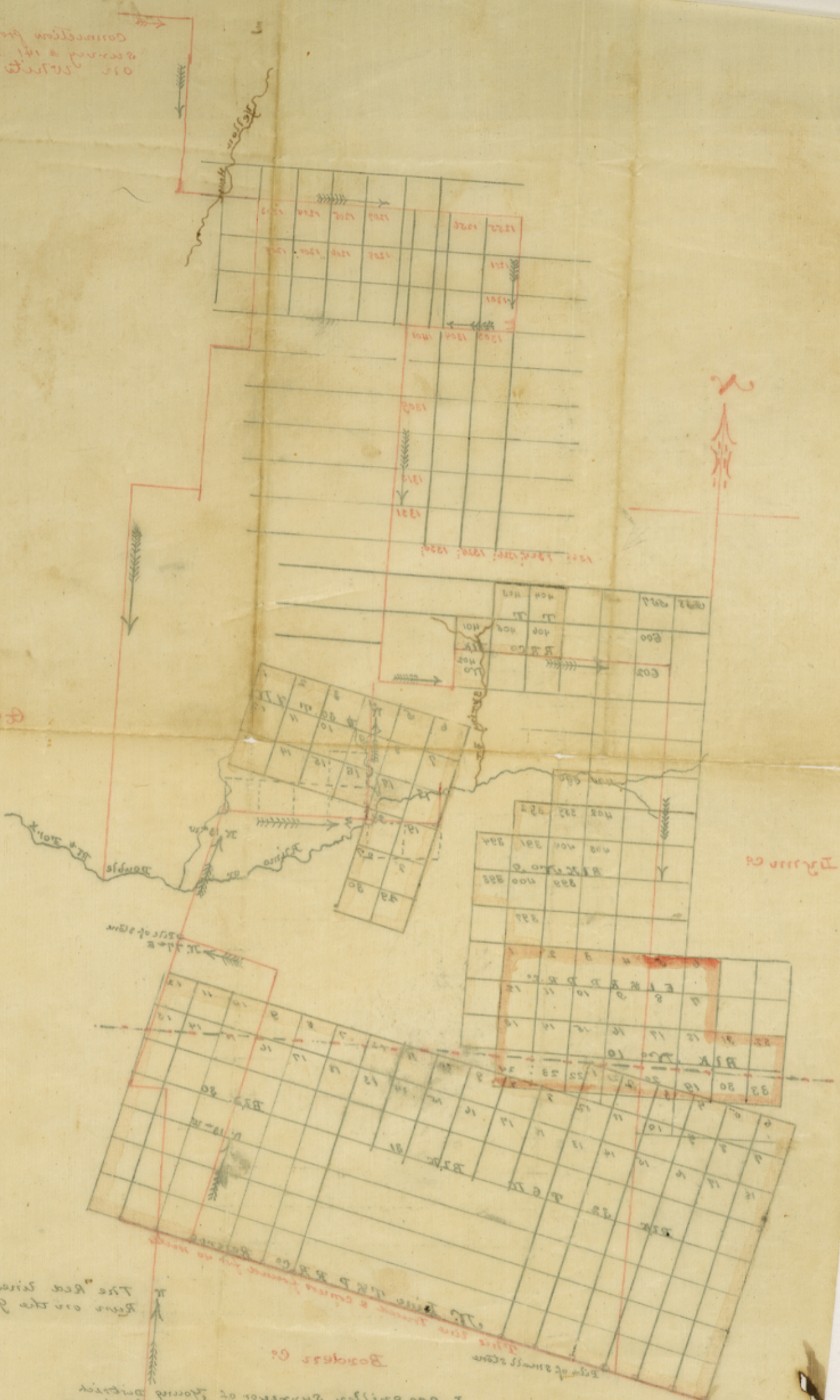
Dodge Co.

Borders Co.

I am a surveyor of the  
state of Iowa and have  
been employed by the  
R.R. Co. to survey the  
line of the R.R. Co. and  
to connect the same with  
the section corners of  
the land.

June 30 1879

County 24084

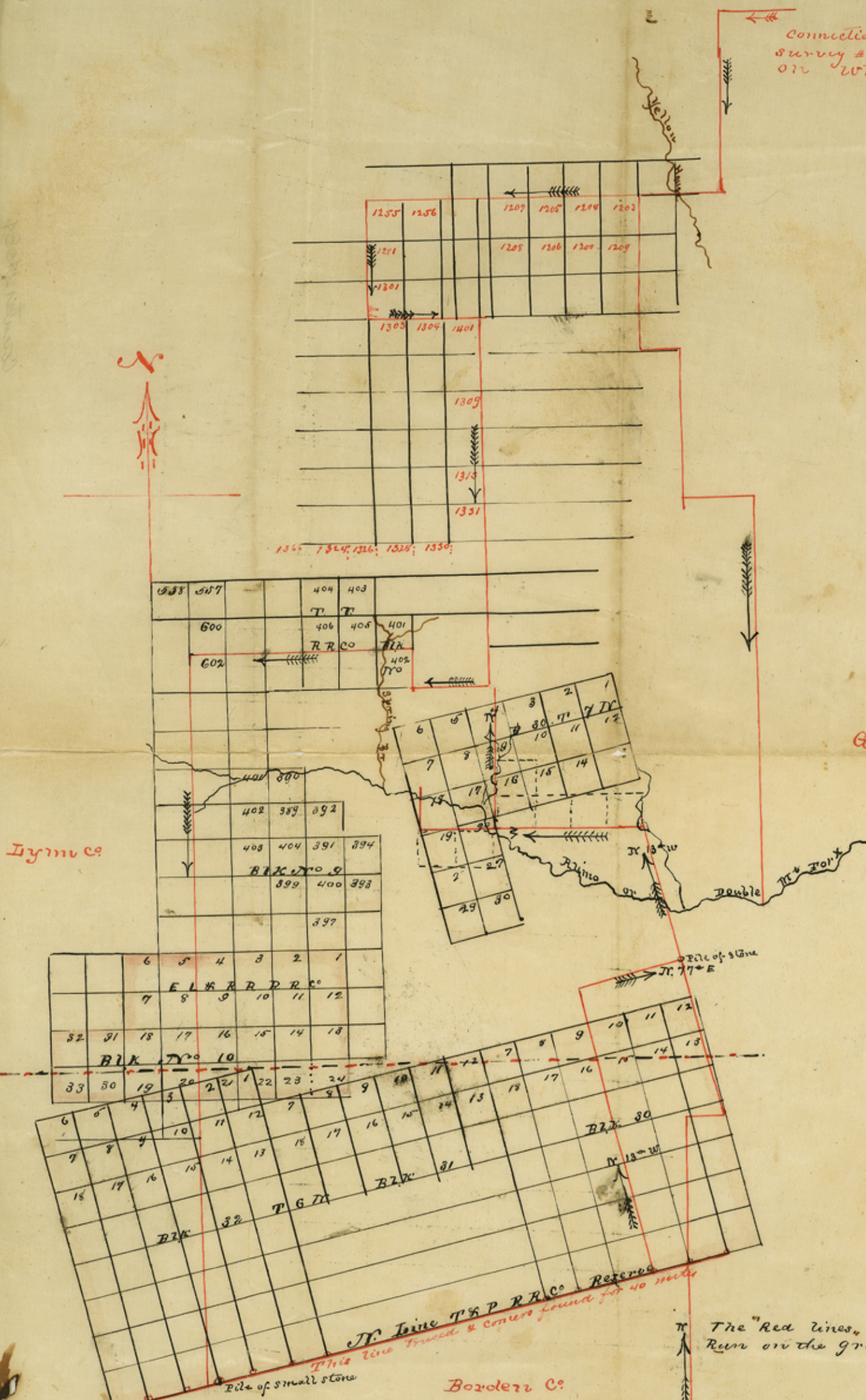


The R.R. line does not connect the  
line of the R.R. Co. to the  
section corners.

Edge of small stream

Connection from N.W. corner  
 survey # 141 H & G T C R R Co BLK 28  
 on White River Crooby Co

*Handwritten notes:*  
 A. J. ...  
 ...  
 ...



Garza Co

Dymco

This line traced & corners found for 40 miles  
 T & P R R Co Reserve  
 Border Co

The "Red lines," denote the connecting wires Run on the ground.

I Geo Spiller, Surveyor of Young District  
 hereby certify that the surveys indicated by the Red  
 lines were actually run upon the ground  
 & the connections thereon made.  
 George Spiller  
 Surveyor at the time  
 this work was done.

Counter 24085