

File No. Sketch File 32
R.O.W. Map of U.S. 84 fr. Post to Justiceburg County
Filed GARZA
Sept. 9 19 91
By GARRY MAURO, Com'r
Douglas Howard

GARZA COUNTY

RIGHT OF WAY MAP OF HIGHWAY NO. (7) US 84
"E" F. A. P. 635-A
FROM POST TO JUSTICEBURG
SCALE 1" = 400 FT.
OFFICE OF RESIDENT ENGINEER, LUBBOCK, TEXAS
APRIL 1932

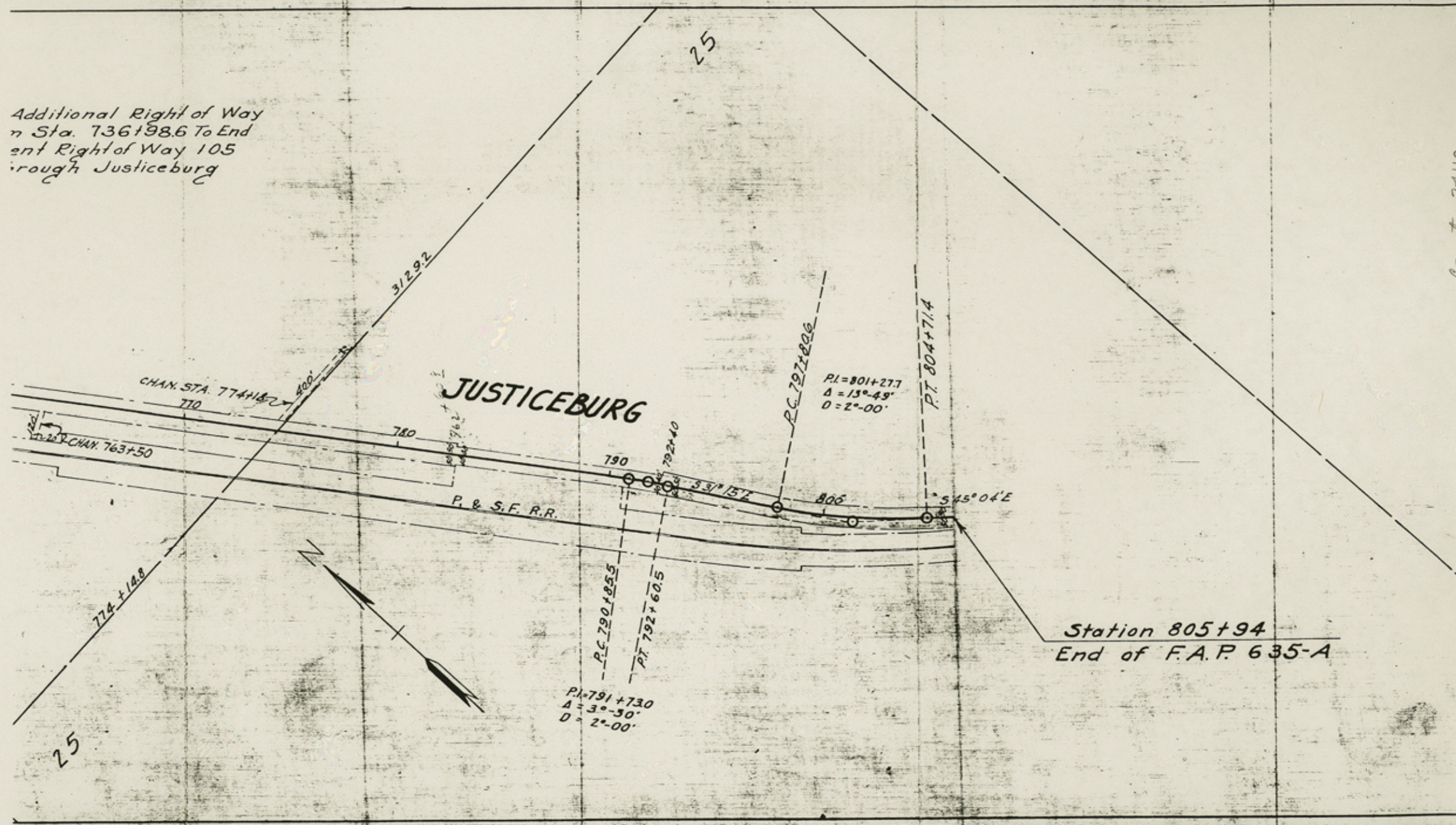
805+94
F.A.P. 635-A

"E" FAP 635A - Control 53-5-243

Count 24109

T₁

Additional Right of Way
from Sta. 736+98.6 To End
of Right of Way 105
through Justiceburg

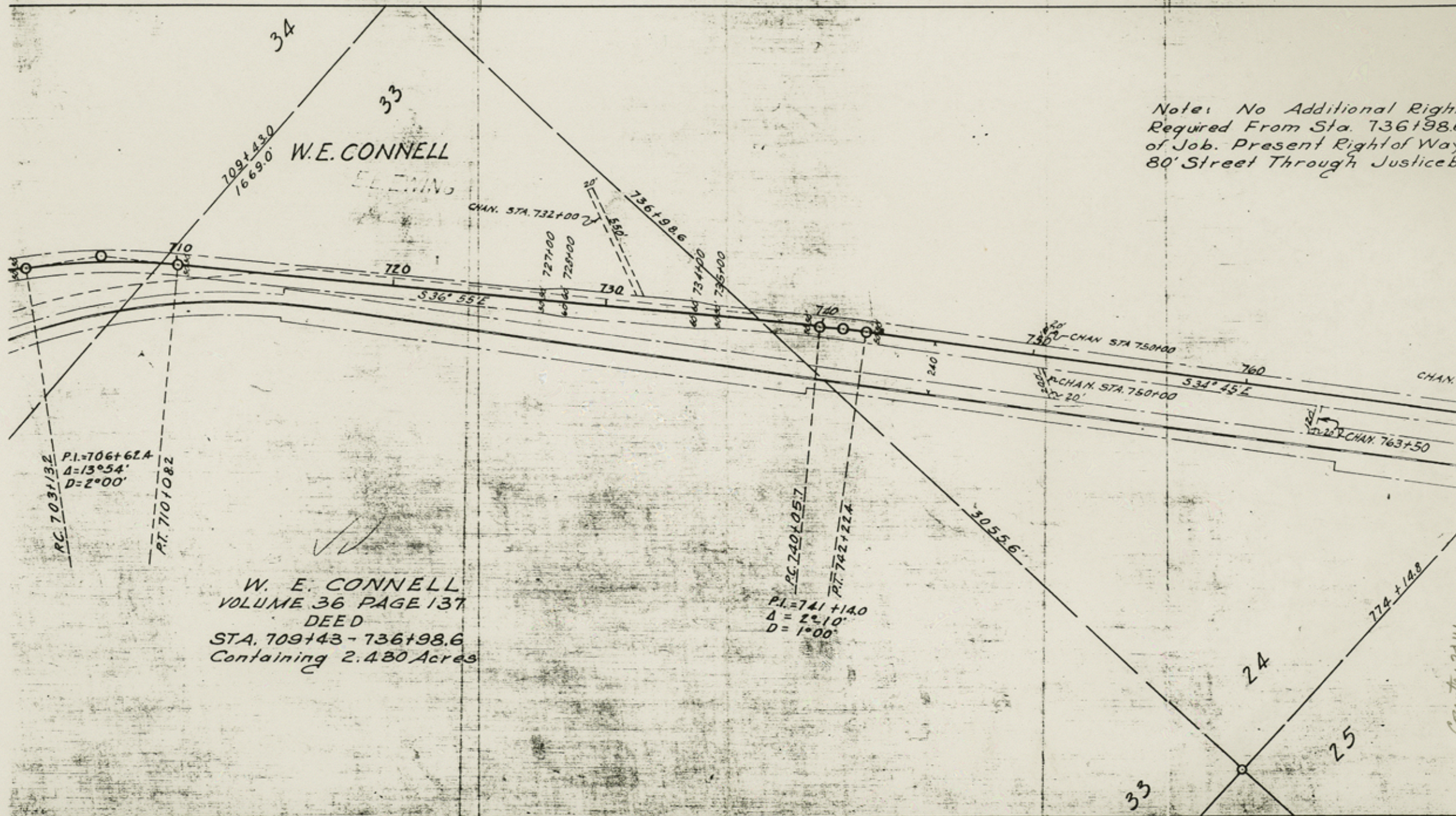


Counter 24110

Garza
SK F. 32

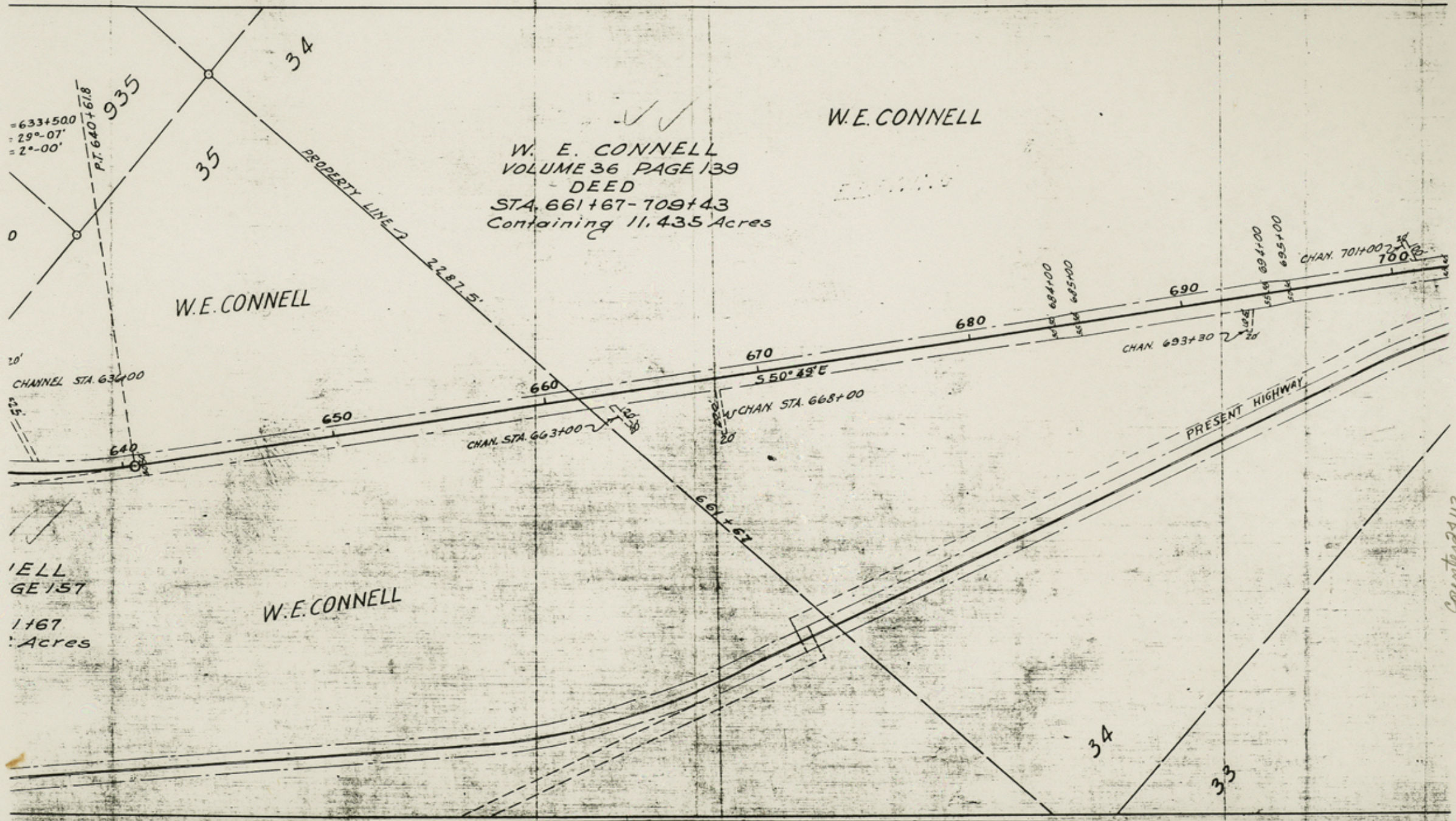
T₂

Note: No Additional Right
Required From Sta. 736+98.6
of Job. Present Right of Way
80' Street Through Justiceb



Garza
Sk. F. 32

T₃



✓
✓
W. E. CONNELL
VOLUME 36 PAGE 139
DEED
STA. 661+67-709+43
Containing 11.435 Acres

W.E. CONNELL

W.E. CONNELL

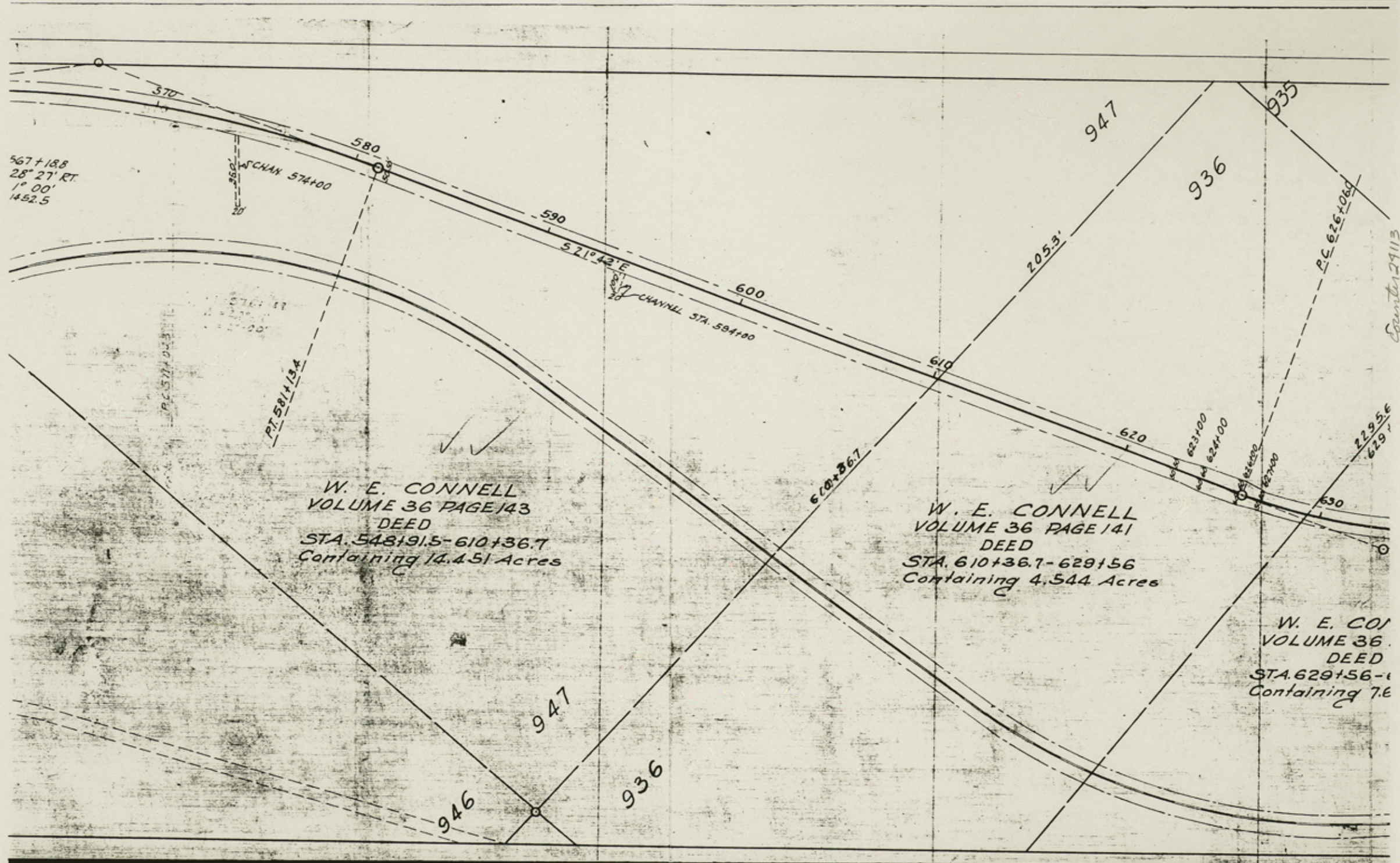
W.E. CONNELL

W. E. CONNELL
DEED 157
1167
Acres

Garza
sk F. 32

T4

Counter 24112



567+18.8
28° 27' RT.
1° 00'
1452.5

W. E. CONNELL
VOLUME 36 PAGE 143
DEED
STA. 548+91.5-610+36.7
Containing 14.451 Acres

W. E. CONNELL
VOLUME 36 PAGE 141
DEED
STA. 610+36.7-629+56
Containing 4.544 Acres

W. E. CONNELL
VOLUME 36
DEED
STA. 629+56-630+00
Containing 7.6 Acres

Garza
Sk File 32

T5

PC 493+95.1

PI 497+69.0
Δ = 7° 28' LT
D = 1° 00'
T = 373.9

E CONNELL

PT. 501+18.9

500

510

520

3.50° 08' E

CHANNEL STA. 514+00

530

EQUATION 528+292
= STA. 528+00

6

540

946

550

551+00

552+00

553+00

554+00

552+66.3

548+91.5

560

W. E. CONNELL
VOLUME 36 PAGE 155
DEED
STA. 478+87-541+82.5
Containing 15.480 Acres

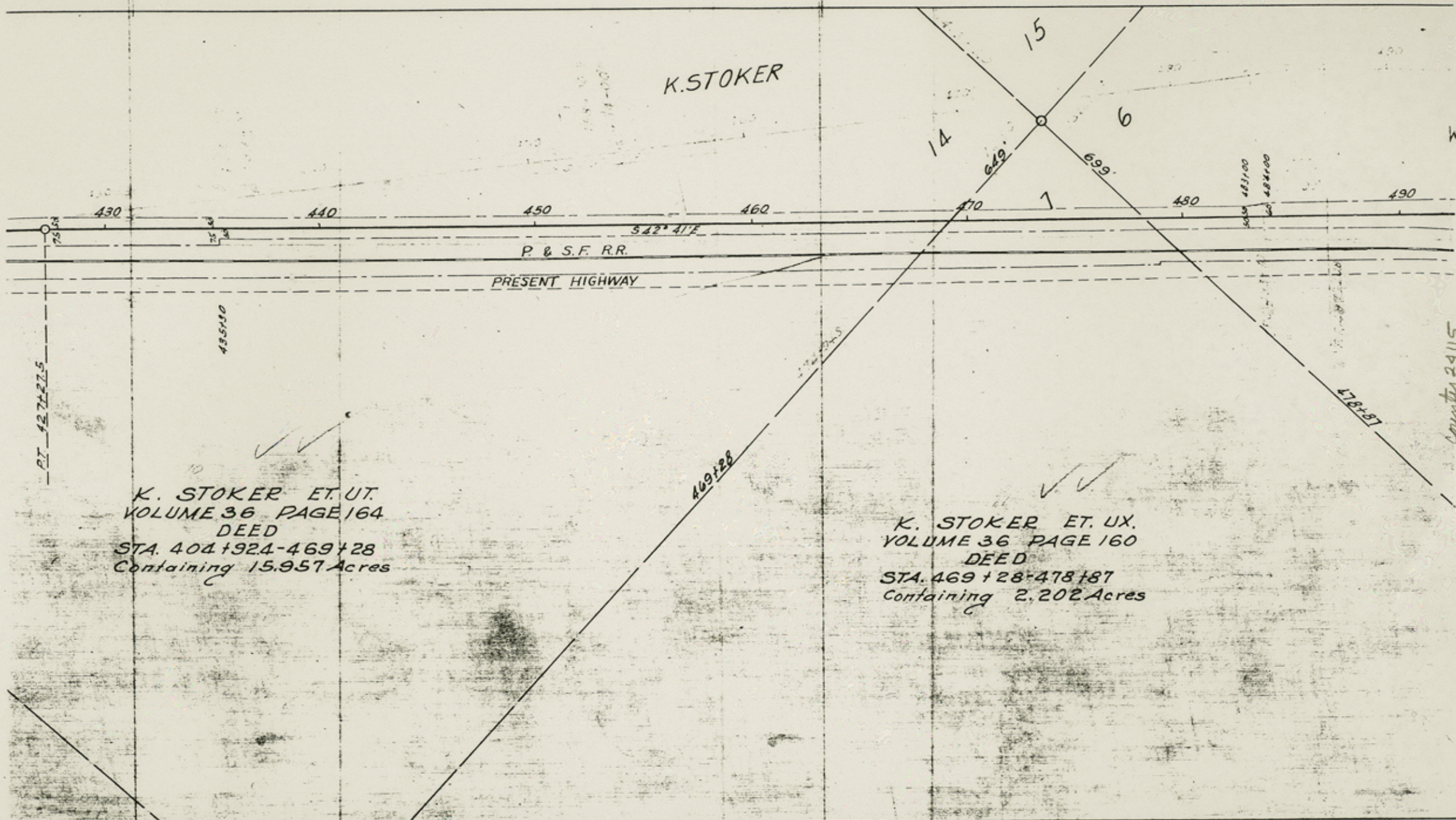
W. E. CONNELL
VOLUME 36 PAGE 145
DEED
STA. 541+82.5-548+91.5
Containing 1.628 Acres

Counter 34114

Garza
sk.F. 32

T6

K. STOKER



✓

K. STOKER ET. UT.
 VOLUME 36 PAGE 164
 DEED
 STA. 404+924-469+28
 Containing 15.957 Acres

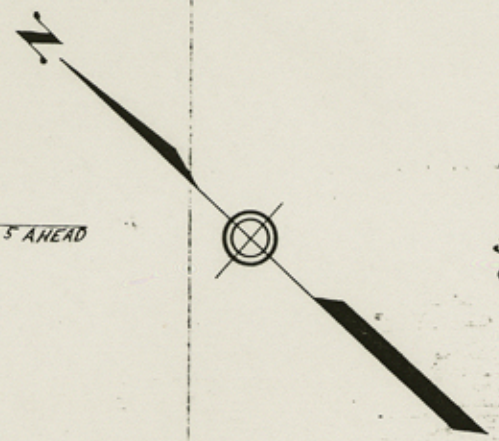
✓

K. STOKER ET. UX.
 VOLUME 36 PAGE 160
 DEED
 STA. 469+28-478+87
 Containing 2.202 Acres

Gorza
 SK F. 32

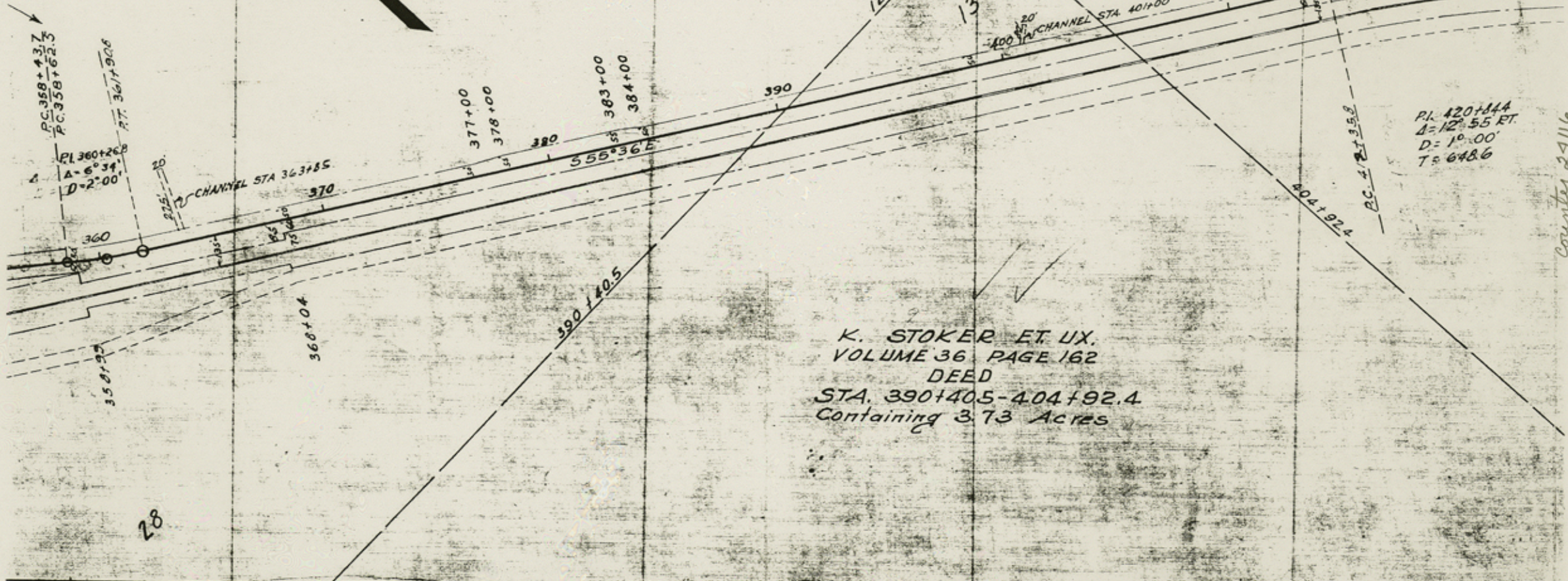
T7

ON
STA 358+62.5 AHEAD



K. STOKER ET. UX.
VOLUME 36 PAGE 167
DEED
STA. 339+66-390+40.5
Containing 12.941 Acres

K. STOKER ET. UX.
VOLUME 36 PAGE 162
DEED
STA. 390+40.5-404+92.4
Containing 3.73 Acres

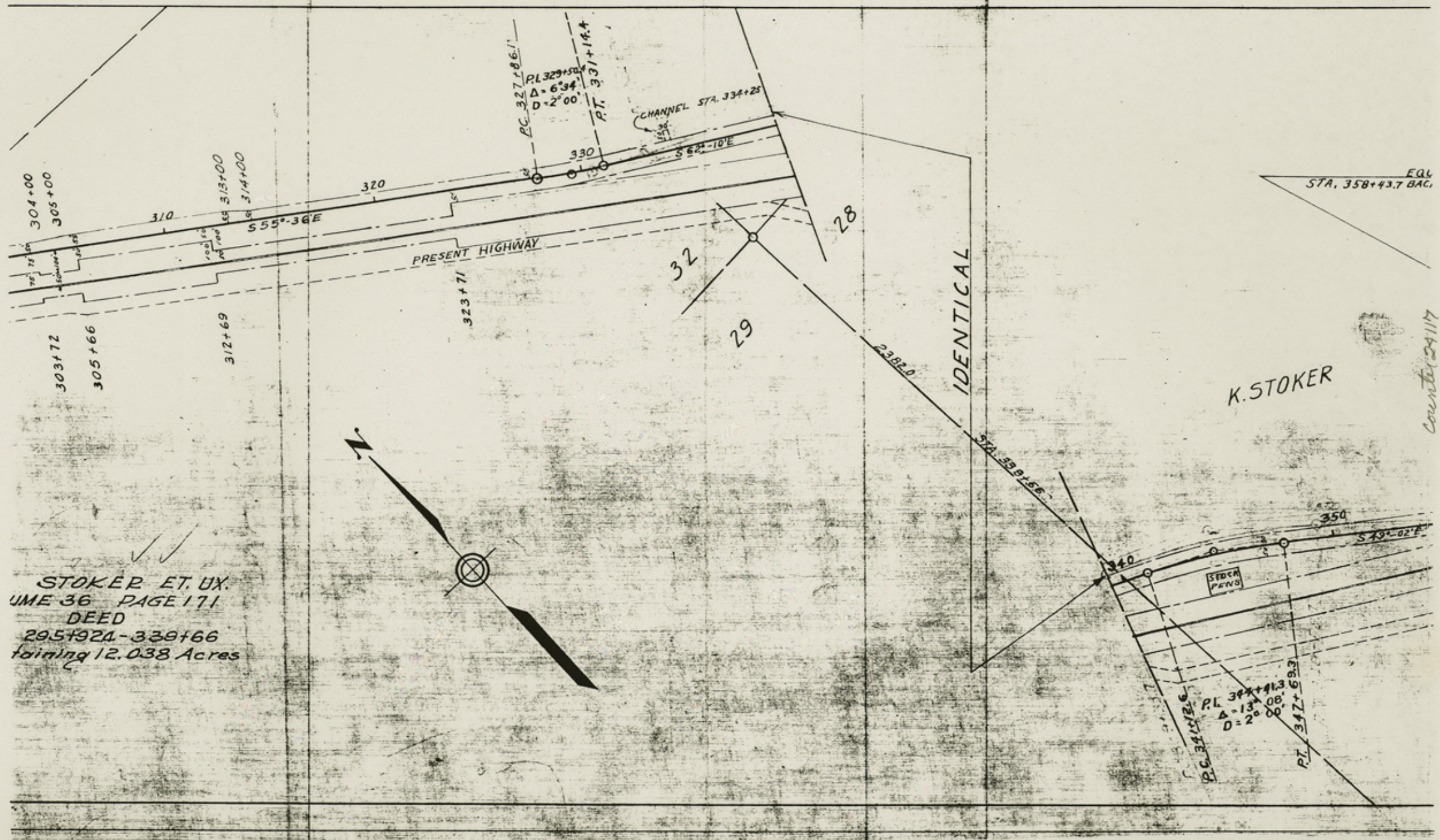


PI. 420+844
Δ=12°55' ET.
D=1°00'
T=648.6

County 24116

Gaza
Sk.F. 32

Te



✓
 STOKER ET. UX.
 UME 36 PAGE 171
 DEED
 295+92A-339+66
 containing 12.038 Acres

K. STOKER

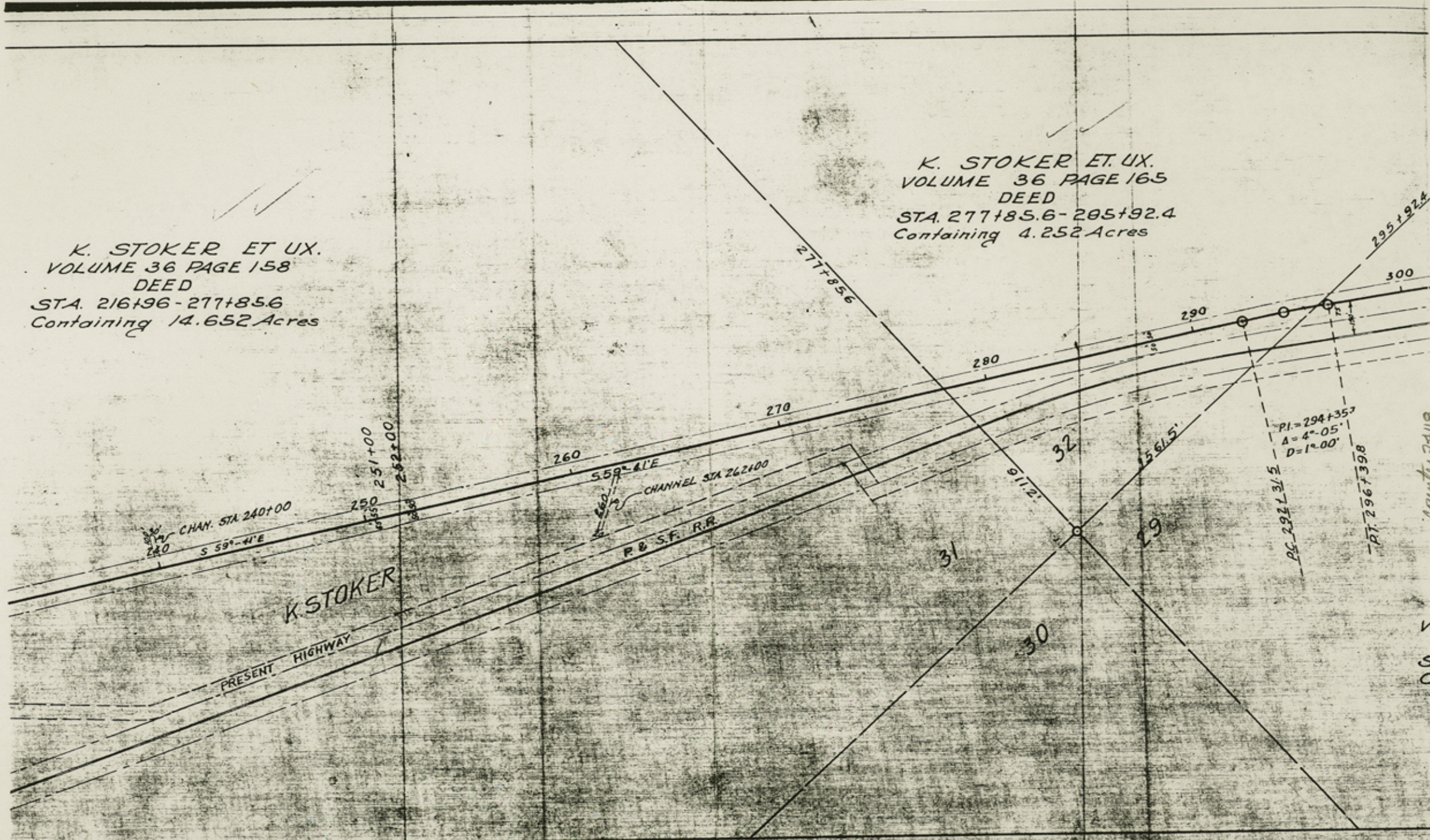
Counter 24/117

Garza
sk. F. 32

T₉

✓
 K. STOKER ET UX.
 VOLUME 36 PAGE 158
 DEED
 STA. 216+96-277+85.6
 Containing 14.652 Acres

✓
 K. STOKER ET UX.
 VOLUME 36 PAGE 165
 DEED
 STA. 277+85.6-295+92.4
 Containing 4.252 Acres



Garza
Sk. F. 32

T10

ET. UX.
178

3+92.1
1cre

1238

2655.8'

BLK 5
K. Aycock Survey

K. STOKER ET UX.
VOLUME 36 PAGES 174, 175, 177
DEED
STA. 158+92.1 - 206+10.3
Containing 1690 Acres

K. STOKER ET UX.
VOLUME 36 PAGE 169
DEED
STA. 206+10.3 - 216+96
Containing 2.479 Acres

3721.8'

50

31

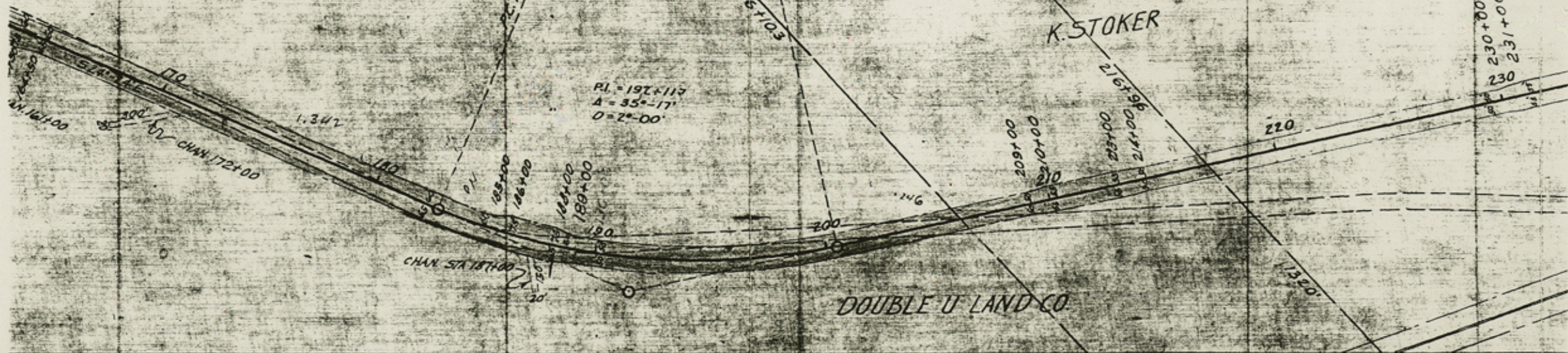
3

K. STOKER

PI = 197+117
A = 35°-17'
D = 2°-00'

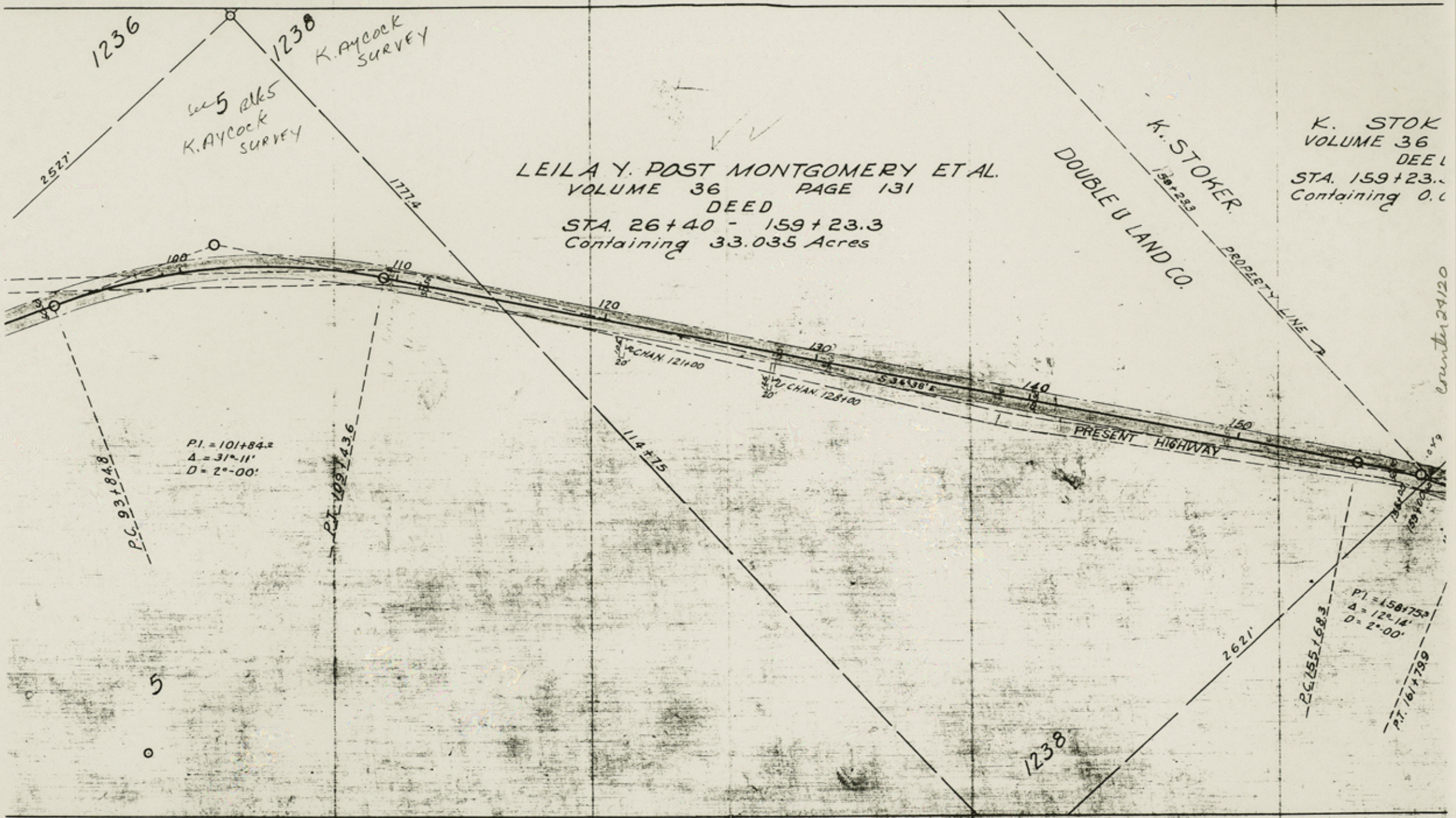
DOUBLE U LAND CO

County 24119



Garga
Sk. F 32

T II



✓✓
 LEILA Y. POST MONTGOMERY ET AL.
 VOLUME 36 PAGE 131
 DEED
 STA. 26+40 - 159+23.3
 Containing 33.035 Acres

K. STOKER
 VOLUME 36
 DEED
 STA. 159+23.3
 Containing 0.6

1236
 1238
 K. AYCOCK SURVEY
 5 RKS
 K. AYCOCK SURVEY

K. STOKER
 DOUBLE U LAND CO.
 PROPERTY LINE

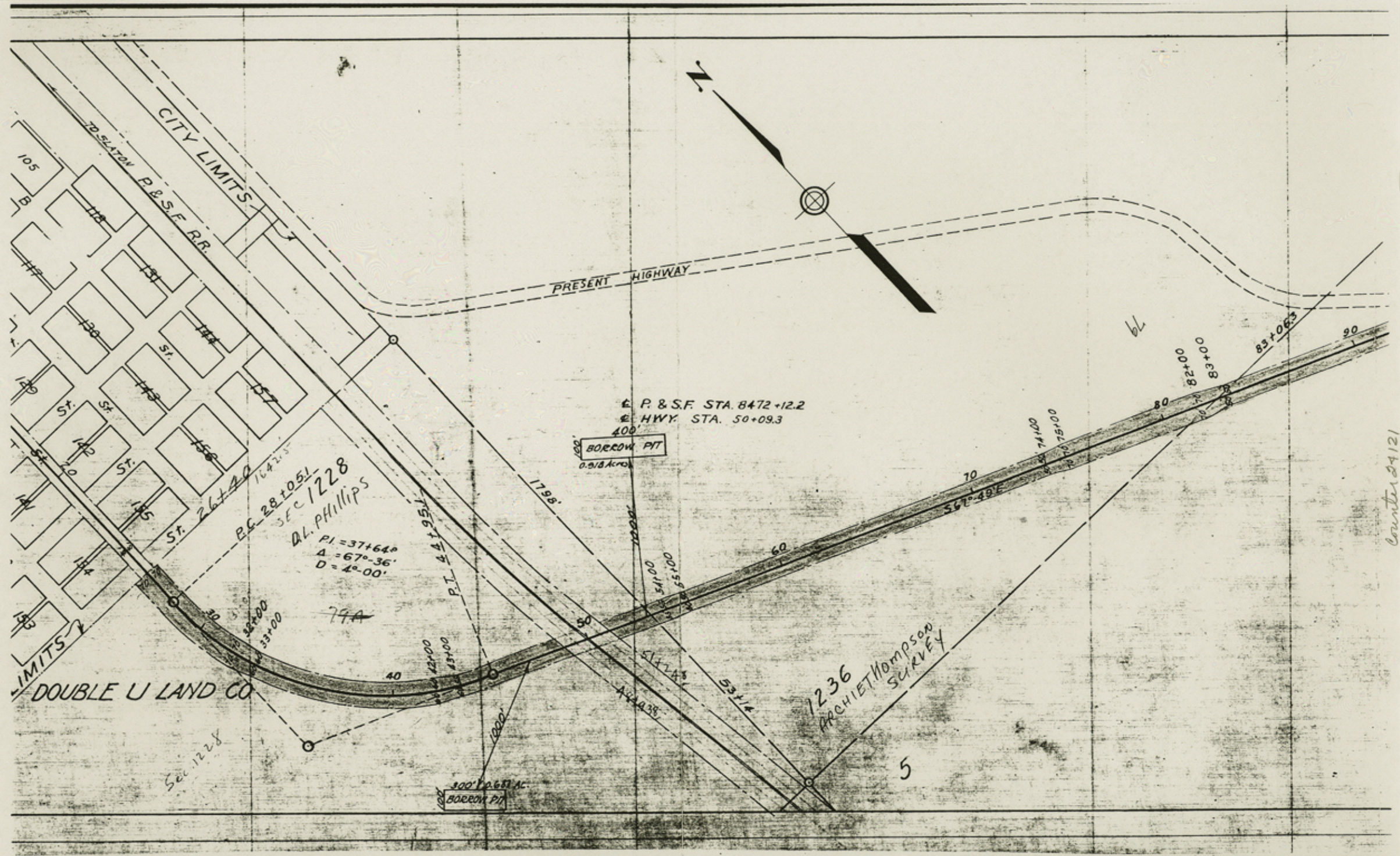
P.I. = 101+84.2
 Δ = 31°-11'
 D = 2°-00'

P.I. = 158+75.3
 Δ = 12°-14'
 D = 2°-00'

Garza
 Sk. F. 32

T₁₂

counter 24/20



Garza
Sk. F. 32

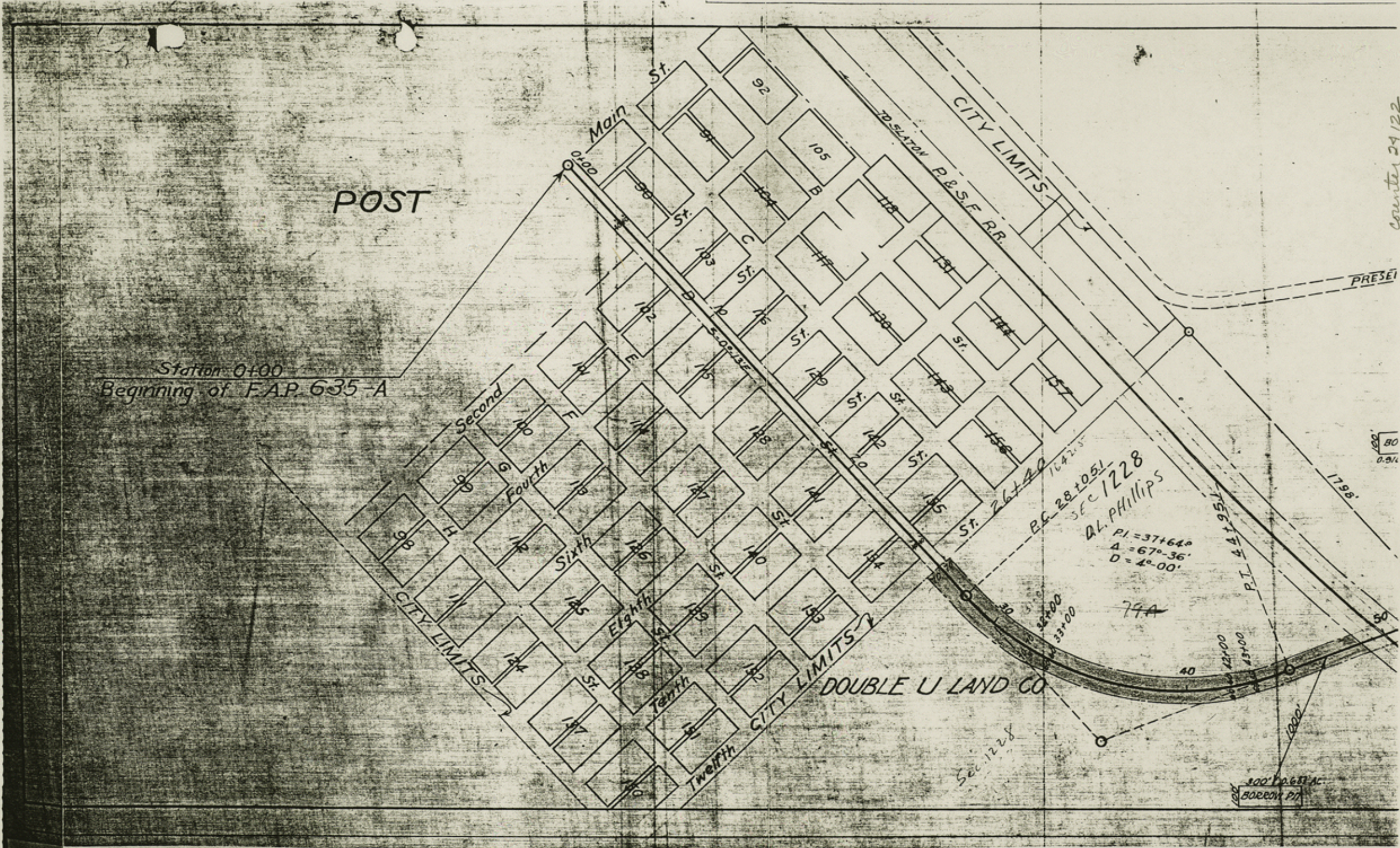
T13

center 24121

counter 24/22

POST

Station 0+00
Beginning of F.A.P. 635-A



Garza
Sk. F. 32

T14