

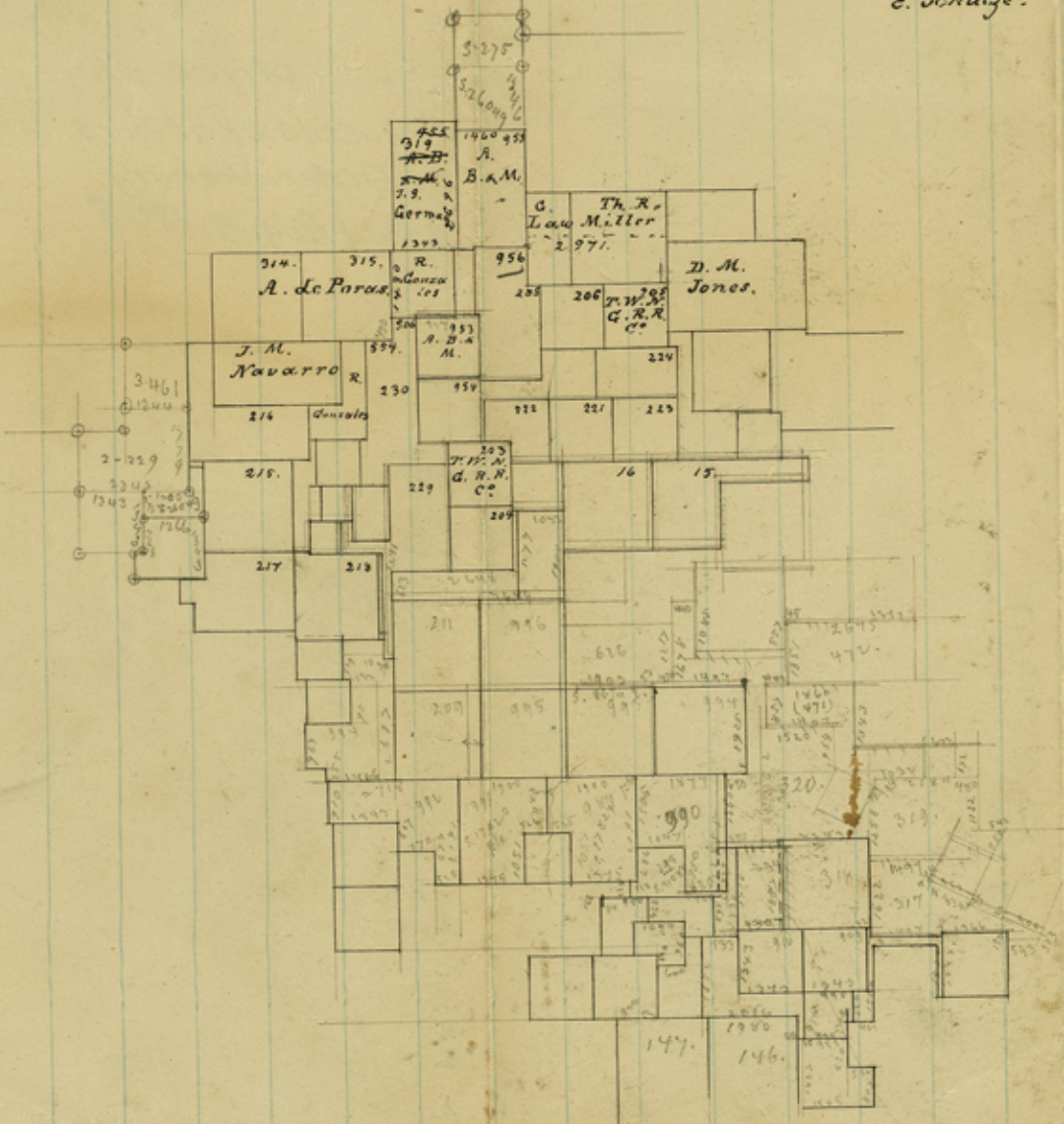
$$\begin{array}{r} 995 \\ 246 \\ \hline 1241 \\ 93 \end{array}$$

$$\begin{array}{r} 2644 \\ 1043 \\ \hline 1781 \\ 2953 \end{array}$$

Plotted according to surveyors explanation

in S. 24592. Aug. 19/98.

E. Schütze.



Counter 24153

$$\begin{array}{r} 1800 \\ 1050 \\ \hline 2850 \\ 1450 \\ \hline 1400 \\ 151 \end{array}$$

~~12~~ File ~~12~~

13

Gillespie Co.

15 miles N.W. from  
Fredericksburg.

office SK.

Schulzes SK of Surs, 15 mi. NW  
of Fredericksburg.

Dated Aug. 19, 1878

counter 24154