



SK. File No 10

Sketch File No. ~~10~~ ¹⁰ 12,

Glasscock County

Blk. 34 - Tsp. 4. S.

By W.F. Kellis.

Filed Feb. 14th 1935

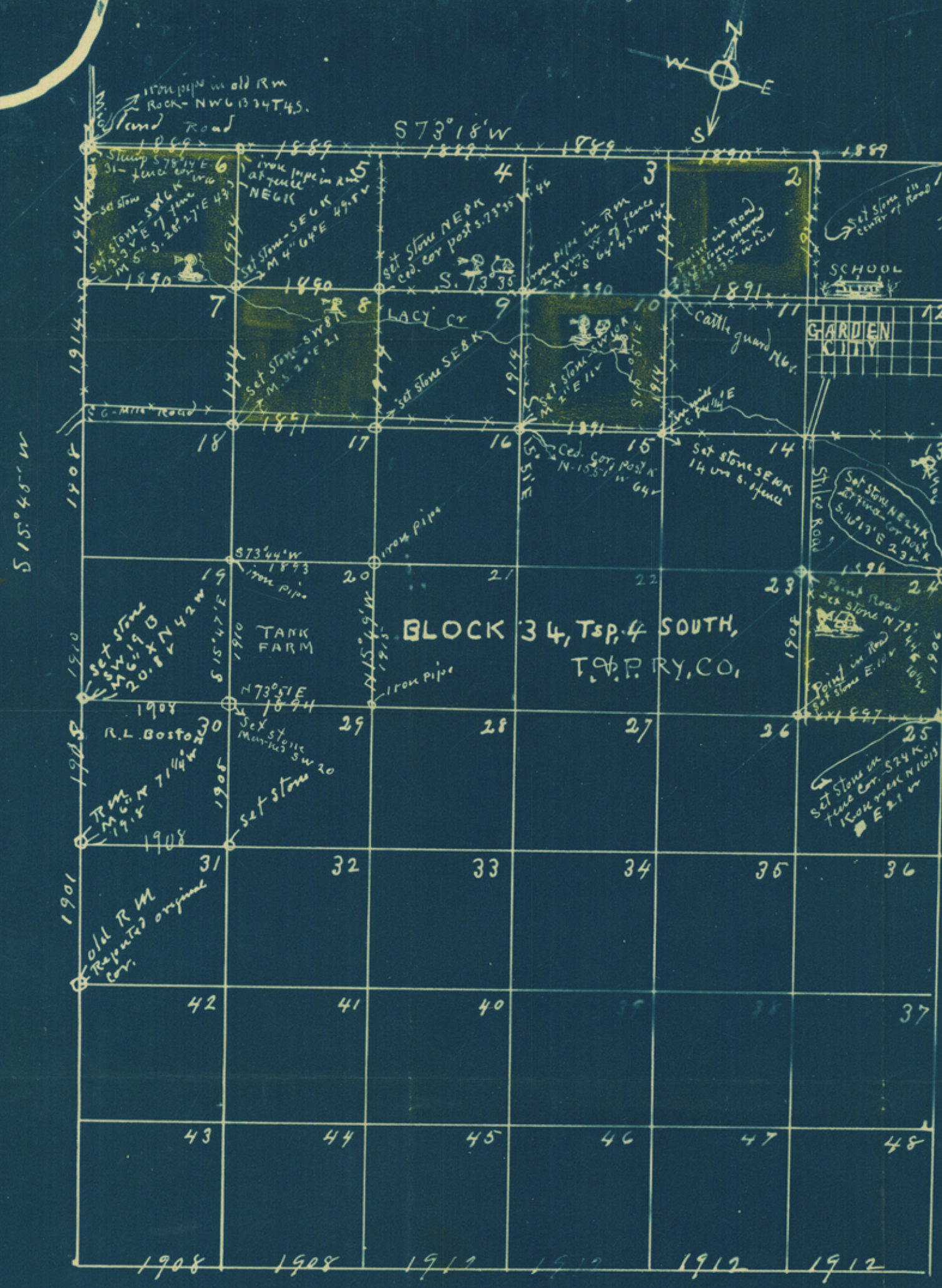
J. H. Walker, Comm.

Dated Feb 20, 1935, Atlee

File Clerk

Descriptive: a

4



LEGEND:
 SCALE: 1500 FT. =
 1 INCH
 VARIATION: 11° 10' E,
 LOCAL OBSERVATION
 ON POLARIS

BLOCK 34, Tsp. 4 SOUTH,
 T.P. RY. CO.

THE STATE OF TEXAS
 COUNTY OF GLASSCOCK

I hereby certify that the within^{ing} foregoing Map was made by me from actual surveys on the ground, and the same truly & correctly shows the lines, corners, position and boundaries of sects, 2, 6, 8, 10, & 24, in BLOCK No. 34, Tsp. 4 South, (in name of Henry Currie) T. P. Ry. Co. in Glasscock County, Texas. Witness my hand and seal at Garden City, this the 20th day of February, 1935.

W. F. Nellis
 Licensed State Land
 Surveyor