

REPORT OF PROCEEDURE AND FINDINGS IN MAKING CORRECTED SURVEY
OF SEC. #46. BLK. #33. TSP. #2-S. GLASSCOCK COUNTY, TEXAS.

Reference is made to R. E. Morris sketch showing all of Block #33, Tsp. #2-S, and to the pencil sketch attached hereto.

The West boundary of this survey (#46) being a part of the line through the Block from the S. W. of #46 to the N. W. of #3, the total length of this line was checked to determine what excess or shortage existed.

The S. W. corner of #46 having been established by my survey of section #10, Blk. #33-Tsp.#3-South in December 1934, the position of the set stone and marked I. P. at the N. W. of #3 was checked with reference to the N. E. Block corner and the original stone mound corners at the E. center and S. E. corner of #1. These angles and distances checked with Morris' plat. The line from N. W. of #3 to S. W. of #46 was then established and angles at N. W. of #3 were also found to check with Morris' plat. In this connection it was noted that Seay, in his resurvey of the West half of this Block in 1903 calls for the N. W. of #3 as "a large, set stone in angle of lane." This is exactly the case. The only difference being that a 2" I. P. marked "California Oil Co." has been driven beside the stone, presumably by Morris in survey of 1929.

From the N. W. of #3 the line was then measured South with the following results.

At 1887.1 varas an I. P. for S. W. #3 offset 10.8 varas E. under R/W fence.
At 3778.2 varas an I. P. for S. W. #10 offset 10.8 varas E. under R/W fence.
At 5669.3 varas an old ~~car~~ spring in center of intersecting lanes for S.W.#15.
At 7548.8 varas an I. P. for S. W. #22 offset 10.8 varas E. under R/W fence.
At 9432.3 varas an I. P. for S. W. #27 offset 10.8 varas E. under R/W fence.
At 10376.0 varas an I.P. for S.W. of N. $\frac{1}{2}$ of #34. offset 10.8 V. E. under R/W.F.

The last distance checks exactly with that given by Morris, and at this point my total distance checks his within 5.2 varas. A difference, when distributed, of approximately 1.0 vara per mile.

The measurement was then continued Southward, without finding any more corners, to the S. W. of #46. My total distance for the eight miles being 15,141.65 varas as against Morris' 15,100.00 varas. The difference of 41.7 varas plus 5.2 varas at the S. W. corner of the N. $\frac{1}{2}$ of #34, a total of 46.9 varas occurring between that corner and the S. W. of #46.

Having checked Morris reasonably close at the five and one half mile point I assumed that my own chainmen had made an error and immediately remeasured the entire eight miles from South to North. This check was made with care, but it disclosed no material difference with my first measurement. Since no corners existed between the S. W. of the N. $\frac{1}{2}$ of #34 and the S. W. of #46 the distance found was divided by three and the West boundaries of #34-#39-#46 made 1903.1 varas each.

The S. E. of #46 having already been established by my survey of sec. #10 Blk. #33, Tsp. #3 South, it remains only to establish the N. E. of #46. This corner is, or should be, in view of the shortage prevailing in this Block, the common corner of #38-#39-#46-#47. Section #38 was Patented in 1922 for 638.0 acres. A two acre square school lot being excepted from the N. E. corner in effect, giving to the section 640.0 acres. (Morris' plat does not appear to take this into consideration.) To re-establish the corners full consideration was given to the Patent and the entire section resurveyed. No difficulties were encountered as the corner monuments called for in the Field Notes are all in place with no evidence of ever having been disturbed.

In the center of the two acre tract at the N. E. corner the foundations of the old school house still exist, as well as remnants of the fence which once enclosed the tract. The ends of this fence intersect the N. and E. boundaries of #38 exactly in accordance with the Field Notes. That is, S. 77 W. and S. 13 E. 106.26 varas each way from the old stone mound in the fence corner at the N. E. corner of the section. This indicates that it is the section corner called for in the Field Notes. In addition, there has been driven, in the center of the mound, a 2" I. P. marked "California Oil Co." This seems to indicate that it is also one of Morris' corners. To prove this a line was run from this corner Eastward along the fence and at 1888.2 varas (Morris' measurement.) a marked I. P. as called for by Morris at S. E. of #36 was found. This tie is shown on my corrected plat.

From the N. E. of #38 the line off of the stone mound under the fence at the S. E. corner was picked up and projected Northward. From this point the line Northward is clearly visible for four miles. For the first mile it closely follows an existing fence, and thereafter follows the center of old state highway #9. This then, it would seem, was the line T. M. Lightfoot used to establish the East boundary of #38.

Turning ninety degrees from this line I ran Westward and at 1901.0 varas found a large, old stone mound under the East and West fence. This mound was 6.5 varas Eastward from the old fence corner and is so indicated on my plat. I then turned ninety degrees and ran Southward, and at 1901.0 varas found another large, old stone mound. At this point I drove a 2" I. P. turned ninety degrees and ran Eastward 1901.0 varas, missing a closure on the stone mound at the S. E. corner by 1.5 varas in distance and 00-01' in angle. I then ran a random line Eastward on the same course to a connection with the set stone marked "T" at the S. E. of #37 and from this calculated a corrected course and distance for the tie shown on my plat.

From the N. W. of #38 I then ran a direct connection to the I. P. at the S. E. and N. E. corners of the N. $\frac{1}{2}$ of #34, and from the S. E. corner to a closure on the S. W. corner of the tract. This closure checked Morris' length for the South boundary of the tract very closely, and provided me with an additional check on my own work.

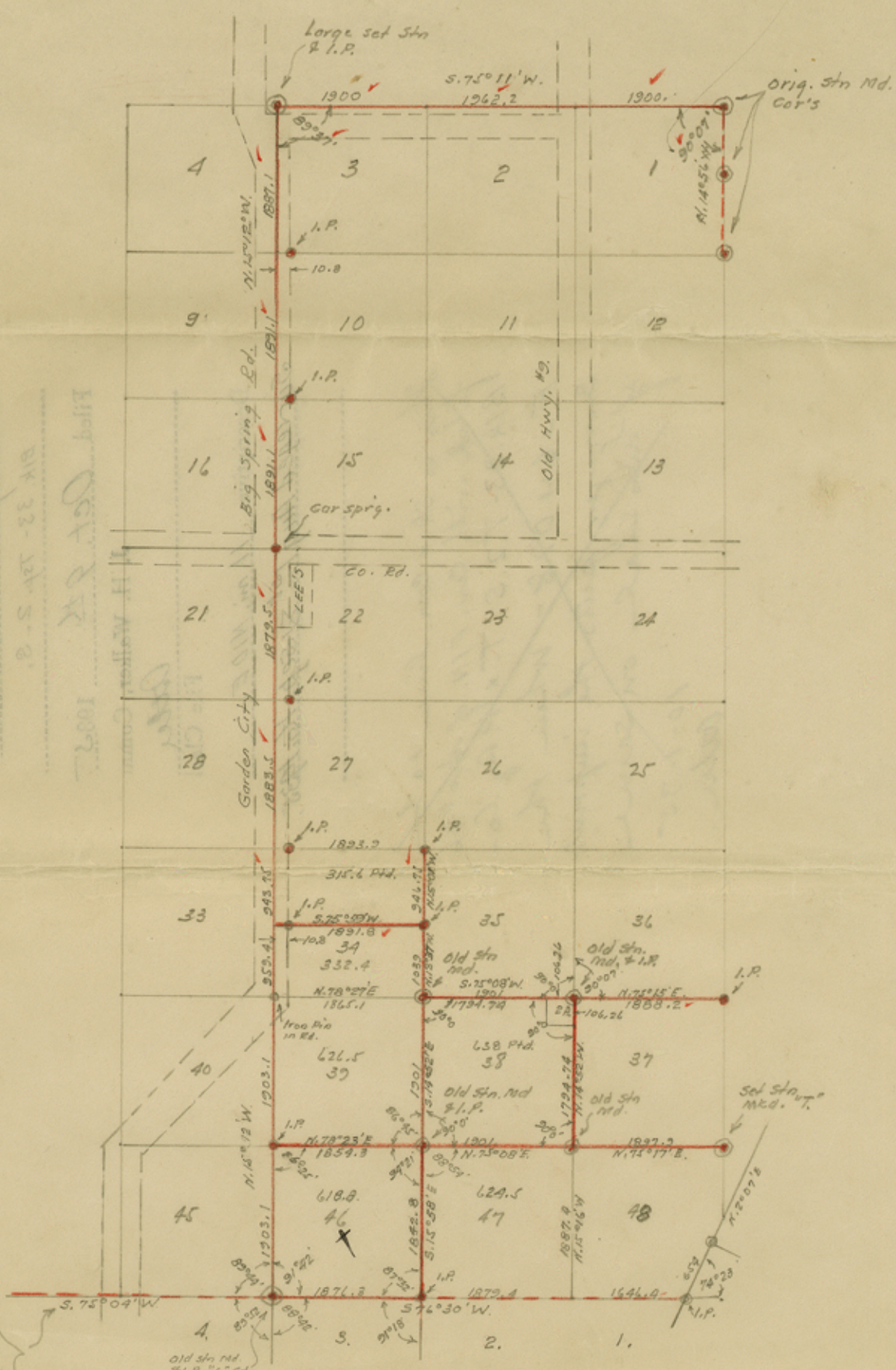
The North boundary of #46 was then run to the S. W. corner of #38. Thence to the S. E. corner previously established. Thence to the S. W. corner and place of beginning.

Surveyed Aug., 1st, and Sept. 16th 1935.

R. W. Butler

 Licensed State Land Surveyor.
 Big Spring, Texas.





Filed Oct 28 1935
 Div 33 - 1st S. 3.
 P. W. Baker
 Glasscock County
 Sketch File No. 12

All Bearings are based on this one given by F. Seay for this line 1903 + 1913

SKETCH OF EAST HALF OF BLOCK #33. TSP. #2 SOUTH. GLASSCOCK COUNTY, TEXAS.

Surveyed Aug, 1st, and Sept. 16th 1935.

P. W. Baker

Licensed State Land Surveyor.
 Big Spring, Texas.



Sketch File No. ~~15~~ **17** 15

Glasscock County

by R.W. Baker

Bik. 33- Tsp. 2- S.

Filed Oct. 9th 1935

J. H. Walker, Comm

Atter

File Clerk

Descriptive: 11. mi, N10E.

Surveyed Aug 1st & Sep. 16, 1935.

~~This is Sk. & Con. line to be
filed with Cer. FIN. of No. 46
Bik. 33-T. 2. S. T. & P. Ry. Co.
F-64078 - when the
Surveyor puts the imprint
of his seal on same~~

10-1-35
Atter



GLASSCOCK COUNTY, TEXAS.
EAST HALF OF BLOCK NO. 3. TSP. 2S SOUTH.
OF
SECTION

1935.
Surveyed Aug. 1st, and Sept. 16th
R.W. Baker
Licensed State Land Surveyor.
Big Spring, Texas.

a # counter 24185