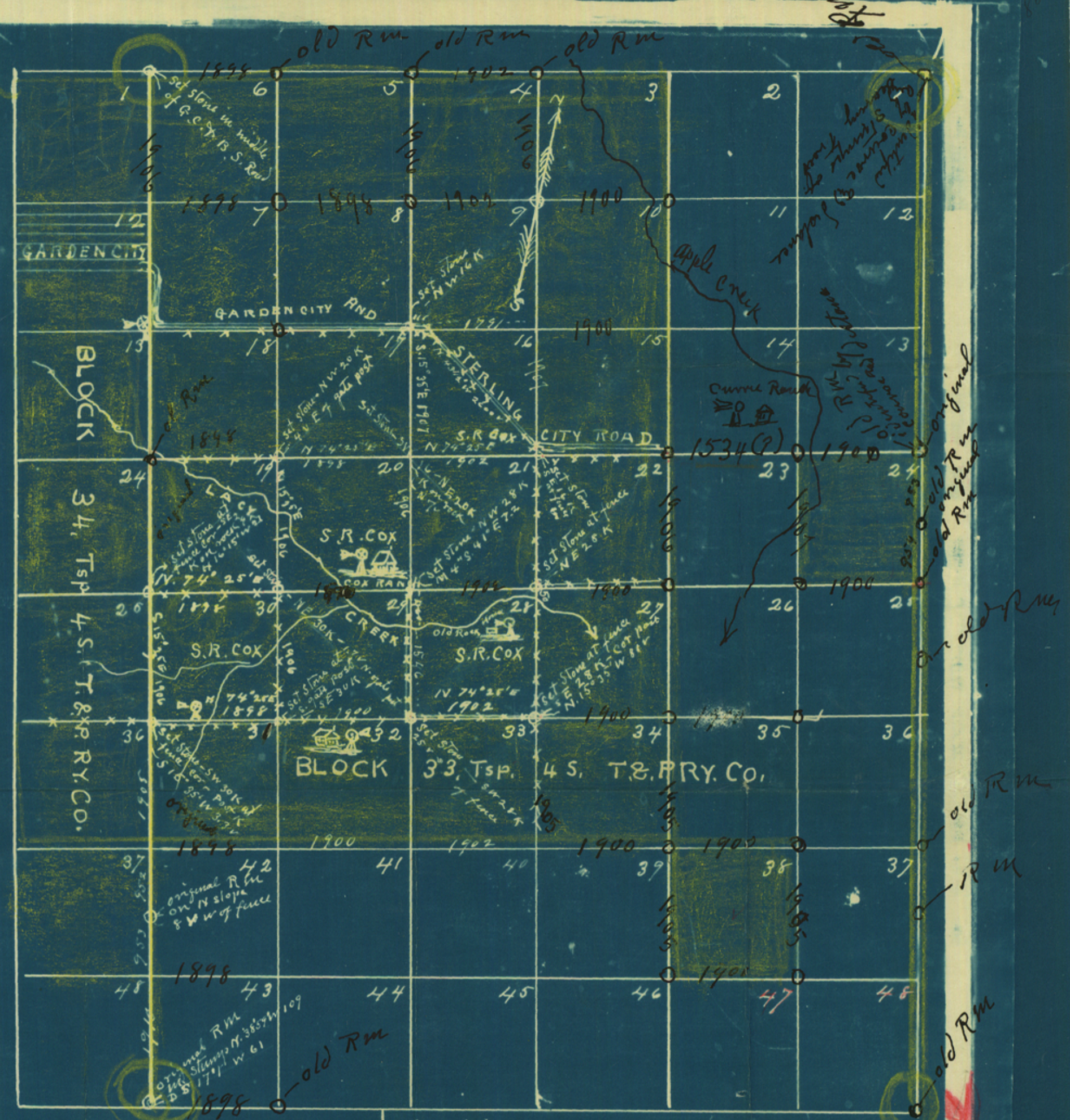


Surveys tinted yellow were reurveyed  
 by me. Circles around block corners indicate  
 that I have checked the corners on the  
 ground. W. F. Rittler 5/1/38



LEGEND:  
 SCALE: 1500 YRS = 1 INCH  
 VARIATION: 10° 10' E  
 LOCAL OBSERVATION ON POLARIS  
 FENCE = \*\*\*

The state of Texas }  
 County of Glasscock }  
 I hereby certify that  
 the within and foregoing <sup>map</sup> truly and correctly  
 shows the lines, boundaries, corners and posi-  
 tion of sections 16, 20, 28 and 30, BLOCK 33,  
 Tsp. 4 S., T. & P. Ry. Co. in the name of S. R. COX, in Glas-  
 cock county, compiled from actual surveys by me on the ground.  
 Witness my hand and seal at Garden city, Texas, this the  
 5<sup>th</sup> day of March, 1935.  
 W. F. Rittler  
 Licensed State Land  
 Surveyor.

1321

Sk. File No. 20  
Glasscock County

**RECEIVED**

Sk. by W.F. Kell's  
Blk. 33 Tsp. 4. S.

MAY 3 - 1938

Filed May 3, 1938

W.H. McDonald,  
BASCOM GILES, Com'r

REFERRED TO MAP.

Utter  
File Clerk

County 29194