

The 26<sup>th</sup> day of March 1892

Louis M. Rupert  
S. C. S.

That and files of Preemptions on the abandoned Hall  
League 16 miles E. N. of the town of Gonzales in Gonzales county

Magnetic variation  $9\frac{3}{4}$  E  
That 2000 to the inch Wm



Cremet Allen  
League and Labor  
John Reed 512 ac. Survey  
Richard Heath  
3/4 of a league and Labor

Mr Jacob Kuechler Dear Sir

You will see from the above plat the particular location  
of each Survey that I have made on the abandoned  
Hall League, since I have been in office also the  
particular location of the the Staff 1/3 League also  
the pleasant position the John Reed 512 acre Survey



which is very different to the way they stand upon the maps of the country. on them the State 1/3 is made to conflict with the John Smith 1/4 and the James Stewart 1/3 League you will readily perceive the impossibility of a conflict with either by examining the field notes of the State one third for it says emphatically. Beginning at the S E corner of the James Stewart 1/3 a survey in Bastrop district which corner is most clearly defined by standing in the line between the two districts of Bastrop and Gonzales I have been there repeatedly and have made it the point to locate all of my surveys from. his States field notes says thence S 6 W 3/4 to his S E corner which I know to be a fact having located the <sup>14</sup> Christopher Preemption from said beginning corner of the State 1/3 which is the S E corner of the James Stewart 1/3 in Bastrop and from his States S E corner and the John Reed's N E corner which found 500 rods N 80 W of the said S E corner of the State 1/3 I located the G. M. Statham Preemption on vacant land between the Reed Survey and the Richard Heath 3/4 League and Labor.

Having ascertained the particular location of the John Reed Survey as here on represented I readily located the S W corner of the Hugh S State 1/3 League from which I commenced on the land, W to fill up the



Sketch of Proemp  
tions around the slope  
1/3 Layer based on  
the cement Allen

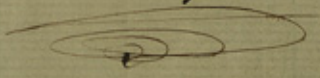
Layer  
Rea & other surveys

---

The  
Guzales Proemp

Sketch of the

Field May 31<sup>st</sup> 1866



counter 24371

4300  
2425  

---

1875

Guzales sketch 3

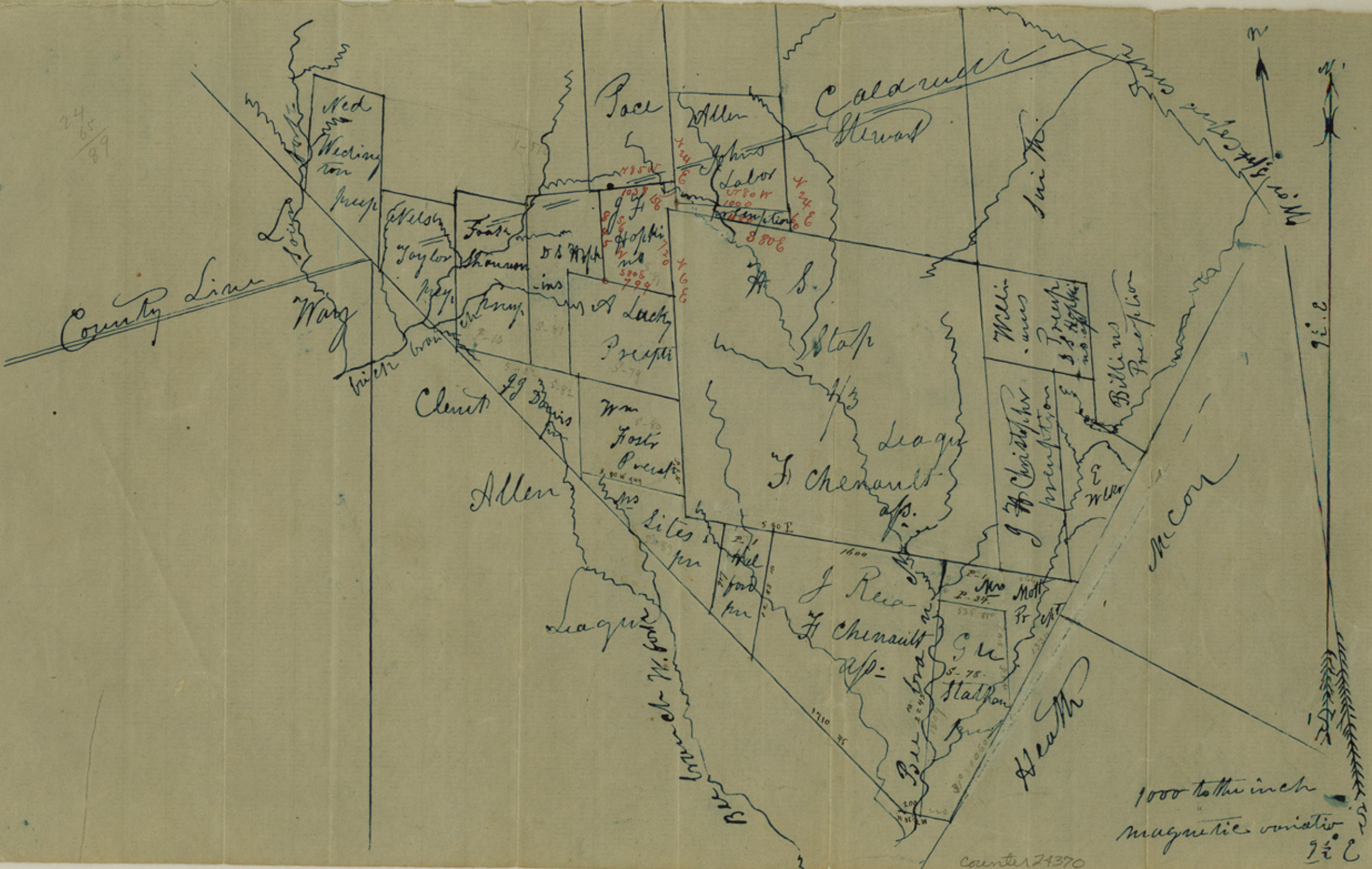
1590  
770  

---

620



24  
65  
89



1000 to the inch  
 magnetic variation  
 9 1/2 ° E

counter 24370



The Law requires all payments for University, School and Asylum Lands, and purchases made under various Acts to be made to the State Treasurer—they must not be sent to this office.

In correspondence relating to lands, always give Name of Original Grantee, with class and quantity, and County in which it is located.

OT-SK. 12/15/93



J. J. Tolson, Designer

# GENERAL LAND OFFICE

W. L. McGAUGHEY, COMMISSIONER.

WM BRAMLETTE, CHIEF CLERK.

AUSTIN, Texas.

Sketch #3  
Gonzales Co.

12/15/93  
78

counter 24369

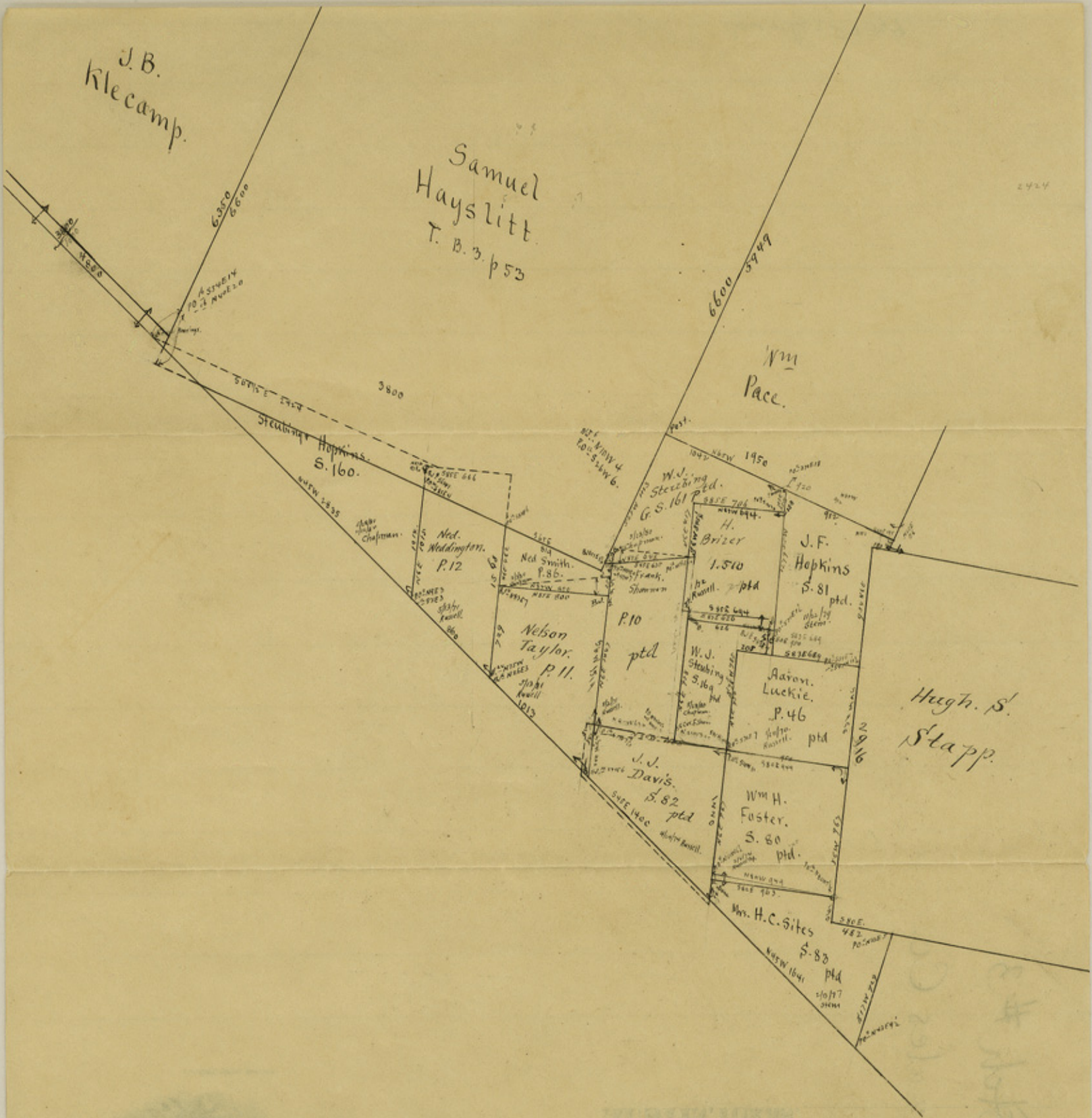


J. B. Klecamp.

Samuel Hayslitt  
T. B. 3 p 53

Wm Pace.

Hugh S. Stapp.



Genl Land Office 12/13/93.



File 3.

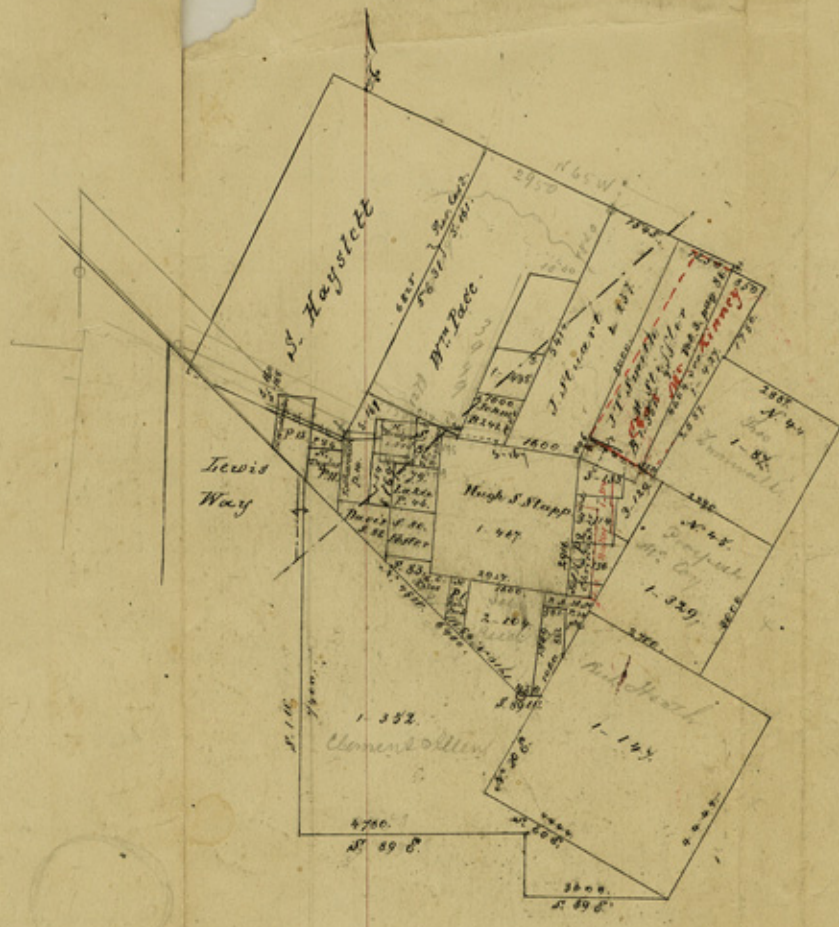
Gonzales Co.

Platted in Office  
June 20/74.

Counter 24367

Plotted in Office

of 20<sup>th</sup> 41 by Est. Hodge



46<sup>th</sup> 1916  
508 466



810  
 750  
 967  
 189  
 ---  
 2916



Counter 24365



Sketch File 3.

Gonzales & Caldwell Co

filed Aug. 26<sup>th</sup> 1872

County 24364

March 29/72



vacancy as filed upon and I assure you on my oath of office that I found the lines and corners called for in the Stofield notes on the ground as here in represented yet the space on the map is left vacant and liable to be filed on as for lies out of this county parties in Coldwell might file and be the reason of much litigation The Reason of my being thus for vicarior is that the term of 3 years will soon run out and several of the parties will apply as soon as they are allowed for patents to their Town ptions and files you will notice that I have included the two small files of our friend Jacob Stenbiny and have set up no plat in the field notes but have tested the whole survey by Latitudes and departures from which you will see that the survey comes within the prescribed limits of closing all of which is here with submitted Respectfully

St. Pauls 1854

James M. Ruppel  
 Surveyor Gonzales County



Gonzales. County - 3 -

Sundry sketches, Reports,  
Explanations, etc,  
Sundry Dates, etc,

WM. H. McDONALD  
COMMISSIONER  
GENERAL LAND OFFICE  
AUSTIN, TEXAS



Counter 24372