

File ~~23~~ 18<sup>23</sup>

Crayson County  
N.W. Corner

Plotted in office May 10<sup>th</sup> 72

*R. Klappenbach*  
Klappenbach's  
office SK. of Surs. in NW  
part of County.

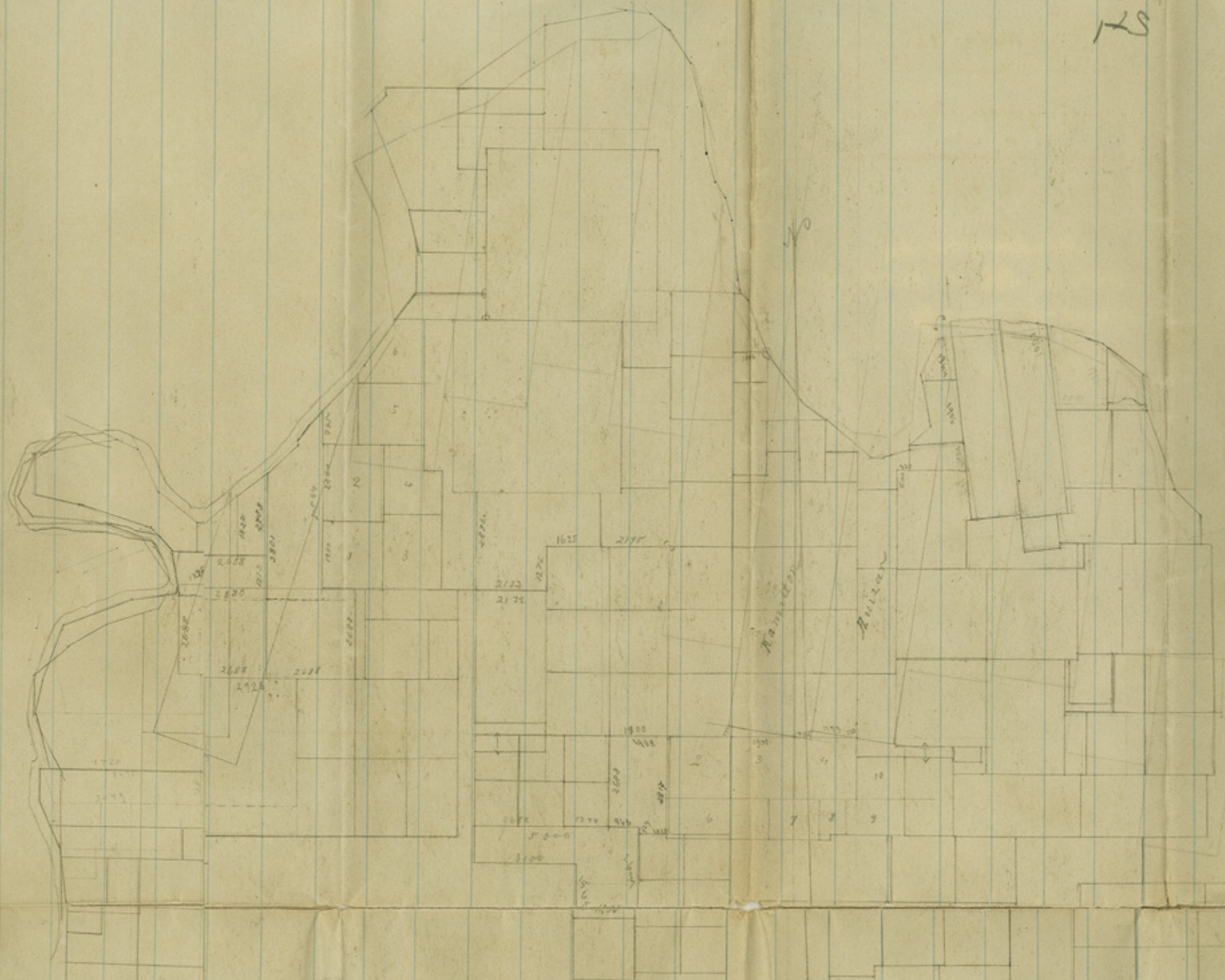
Dated May 10, 1872.

ST<sup>2</sup>

Counter 24503



125



Cooke Co. | Grayson Co.

S  
S

counter 24509