

Field Notes of the county line between Upshur & Gregg counties, as run by J. M. Glaser county Surveyor for Upshur county, and A. S. Taylor county surveyor for Gregg county on the 4th 5th 6th & 7th days of July 1882

Beginning in Prairie creek where the most Northern Gilmer and Marshall road crosses said creek, 1322 m North and 230 m East from the S.E. corner of a survey made in the name of Chas H Cooper a ^{white} ~~white~~ oak bears N32 $\frac{1}{2}$ E 10 m distant marked V.C. a Sweet Gum bears S24E 6 m distant marked G.C. Thence running S37 $\frac{1}{2}$ ^W at 440 m. Cooper's East boundary line at 870 m prairie creek c N at 920 same 1100 same at 1730 m Coopers South boundary line 775 m west from S^W corner at 1 mile a pine tree marked 1M V.C. G.C. at 1 m & 1450 m J. F. Davison's South boundary line. 278 m E from S.W. corner at 2 miles a Stone pile a Post oak marked G.C. a pine marked V.C. at 2 m & 700 m Drury Reed's East boundary line 347 m North from S.E. corner at 2 m & 180 m creek c E. S.E. at 3 m & 460 m Reed's S. boundary line 266 m W from S^E corner at 2 m & 1380 m Jas Mc Rea's N boundary line 700 m west from S^E corner at 3 miles a Stone pile for corner at 3 m & 740 m Mr. Rea's S. boundary line 100 m East from S W corner at 4 miles a pine tree marked 4M V.C. & G.C. 4 m & 1340 m branch branch c N W at 5 miles a pine tree marked 5M V.C. G.C. at 5 m & 1400 m Doves Sausages North boundary line 1030 m East from S W corner at 5 miles 1570 m to a Stone pile for a corner. 12 miles S37E from the Town of ^{Silmer}

8# 15. 25. 20 66215

and 990 are East and 90 are South from the N.W. cor of Saul Sanchez survey
 in the direction of Longview, from which a pine bears
 S 61 1/2 E 3 3/4 are distant marked G.C. a pine bears S 62 1/4 W 3 are distant
 marked U.C. Thence running S 68 W at 1110 are
 Sanchez West by line 510 are South from N.W. cor at 1 mile
 tree marked 1 M & U.C. & G.C. at 1 m & 1425 are Gilmer &
 Longview old road at 2 on Stone pile at 3 miles a stone
 pile at 3 m & 500 are S.W. Hooper's West by line 2470 are
 South from N.W. cor at 4 miles a stone pile at 4 m & 1270
 are A. T. Mc Gee's East by line 730 N from S.E. cor at 4 m
 & 1800 are Moody creek ^{cb} at 5 miles a tree marked 5 M at
 5 m & 40 are Mc Gee's West by line 470 are North from S.W. cor
 at 6 miles a tree marked 6 M at 6 m & 300 are H. H. Edwards
 West by line 2060 are South from N.W. cor at 7 miles a
 tree marked 7 M at 7 m & 970 are W Goodwin's East by line
 270 are North from S.E. corner at 8 miles a tree marked
 8 M U.C. G.C. at 8 m & 440 are Harmon Hockett's West by line
 290 are South from N.W. cor at 8 m 1300 are Glass creek c d
 at 8 m & 1500 are J & S R R at 8 m & 1650 are David Choate's
 West by line 720 are South from N.W. corner at 9 miles
 at tree marked 9 M at 9 m & 1270 are Sabine River 50 are
 West from the S.E. cor. of a survey made in the name
 of Gen. W. Hampton. Thence following the ^{main} River as
 a line to the N.W. cor of Rusk county and the N.E. corner
 of Smith county

G. B. Tilman } chain

Thos A. Graves } men

J. M. Glase

Surveyor for Upshur Co

per J. S. Taylor
S. Taylor Surveyor for
Gregg Co

Tx^A

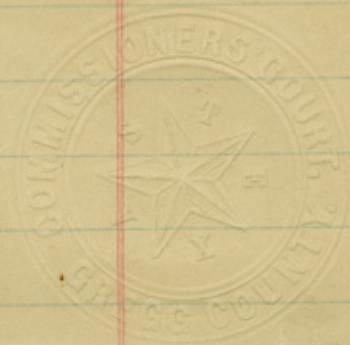
(Endorsed) Field notes of Survey of
Boundary line between Gregg
and Upshur Counties Texas

Filed in open County Commissioners
Court August 14th A.D. 1882.

J. W. Levy County Clerk of Gregg
Co Texas

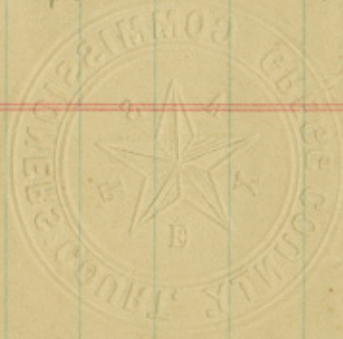
The State of Texas } J. W. Levy County Clerk
County of Gregg } in and for Gregg County
Texas, do hereby Certify that the foregoing field
notes and attached map is a true and cor-
rect copy of the original now on file in my
Office. And recorded in the Minutes of the County
Commissioners Court of Gregg County, Texas,
to Certify which I herewith sign my
name and Affix the Seal of said
Commissioners Court. At Office in
Longview Gregg County, Texas, This
17th day of August A.D. 1882.

J. W. Levy County Clerk of Gregg County Texas
By ~~Richard~~ Deputy County Clerk of Gregg County Texas

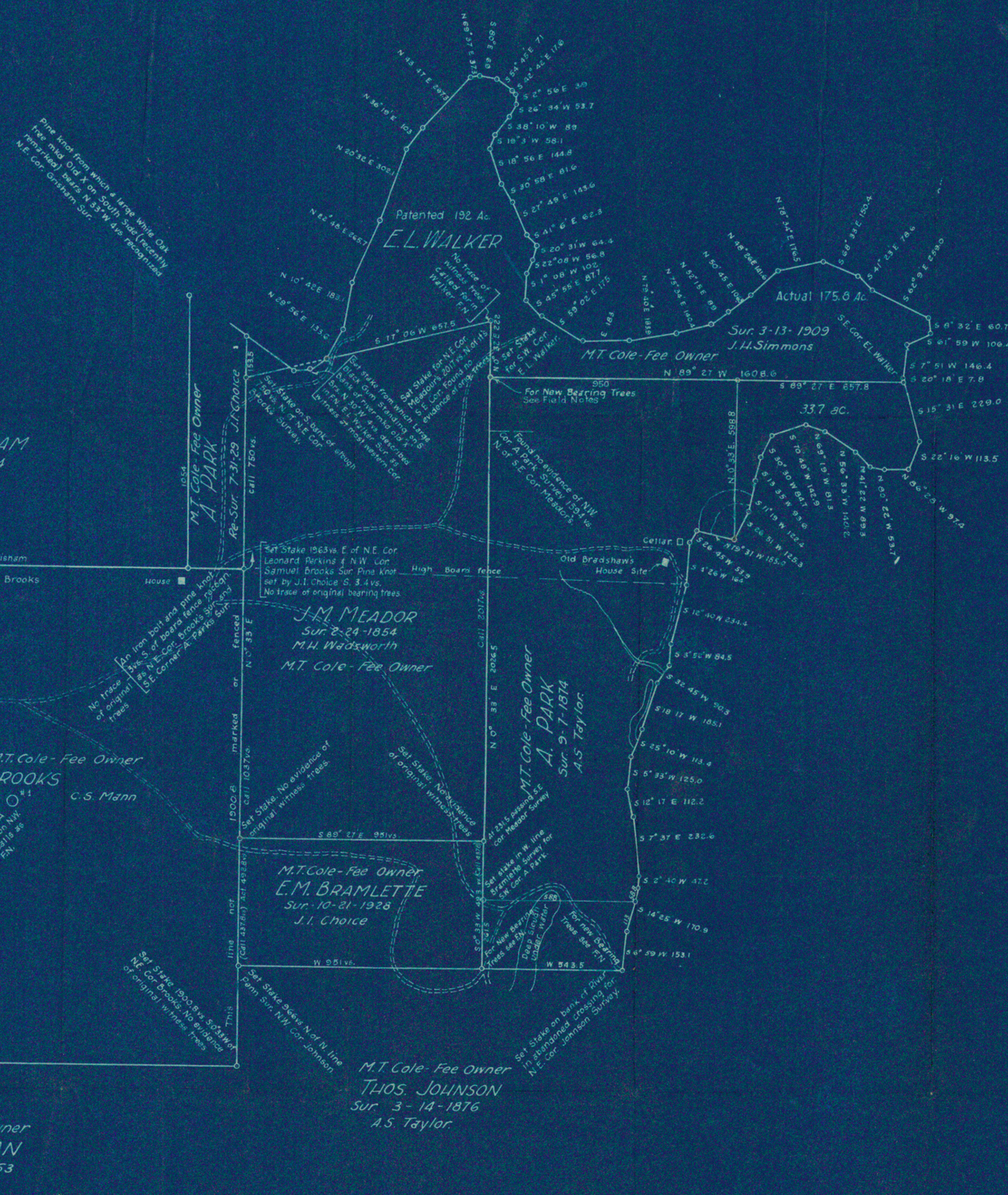


county 24585

8-1882
Gregg upshur



Gregg Co. St. File #8



E.H. GRISHAM
 Sur. 12-8-1854
 M.H. Wadsworth

J.M. MEADOR
 Sur. 2-24-1854
 M.H. Wadsworth
 M.T. Cole - Fee Owner

SAMUEL BROOKS
 Sur. May-1-1840
 C.S. Mann
 M.T. Cole - Fee Owner

E.M. BRAMLETTE
 Sur. 10-21-1928
 J.I. Choice
 M.T. Cole - Fee Owner

THOS. JOHNSON
 Sur. 3-14-1876
 A.S. Taylor
 M.T. Cole - Fee Owner

J.A. DUNCAN
 Sur. April 12-1853
 M.H. Wadsworth
 M.T. Cole - Fee Owner

LEONARD PERKINS
 Dr. C.C. Crews

I, R.G. Armstrong, a licensed land surveyor, do hereby certify that this sketch shows surveys in Gregg Co. Texas, as I surveyed same on or about May 2nd to June 11, 1931.

R.G. Armstrong
 LICENSED LAND SURVEYOR