



1800
620
1376
1380

5095
134
516
777

377
1180
1557

1113
1344
280
1379
1166

Am

Counter 24626

24

Sketch File No. 3
of the North East Part of
Crimes County

N¹

Plotted in Office
by
C.C. Strennie
April 15/71

Counter 24627

Sheet No. 3
of the North East Part of
Green County



Plotted in Office
by
G. C. Sweeney
April 1871.

County 24633

County 24633

File 3.

Grimes County

N.E. Corner.

filed Dec. 19/72

March 1873

office SK. by R Brontze

Dec. 18, 1872-

Filed Dec 19, 1872

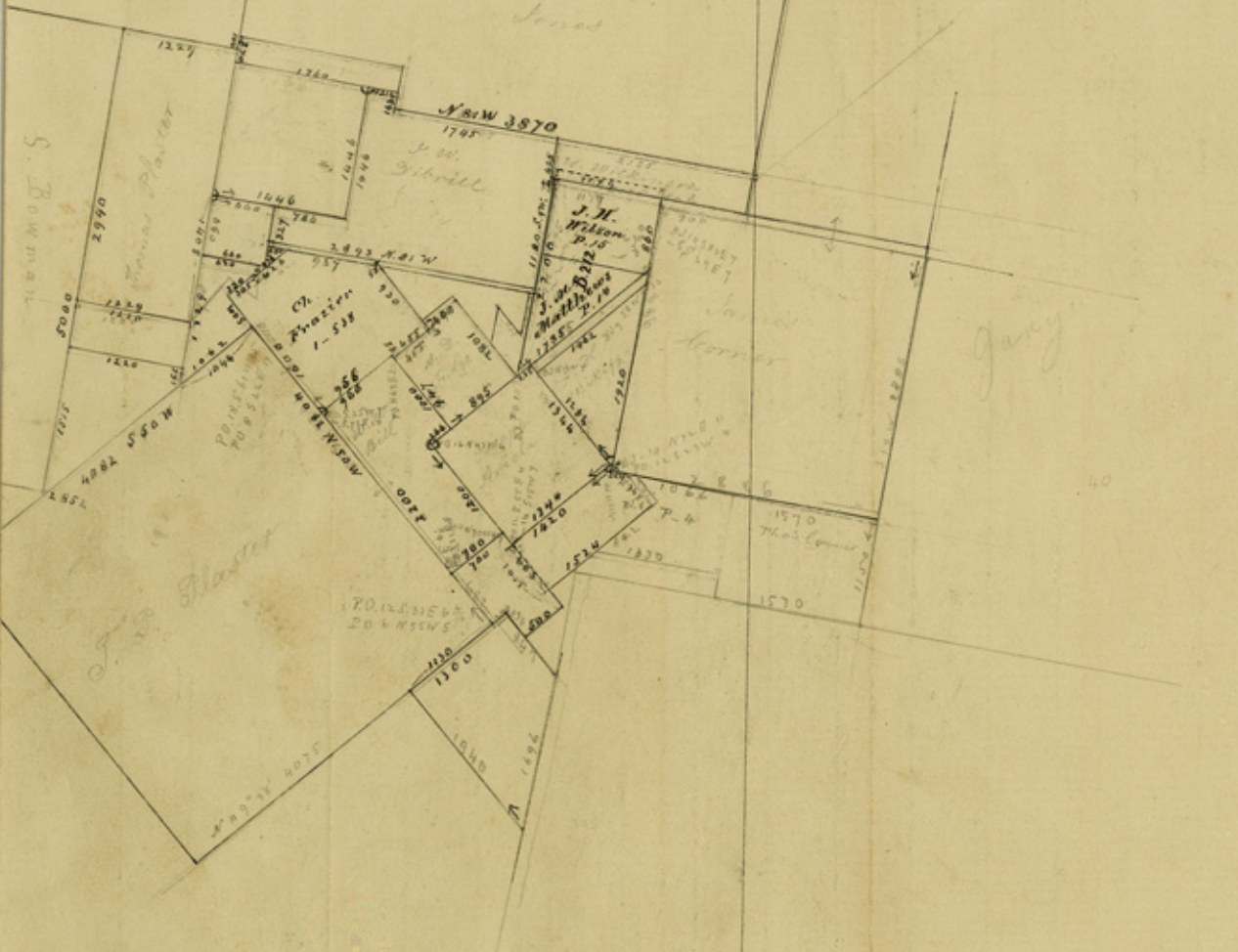
surveys in NE Cor. of Co.

plotted in Office Feb. 18/72

R. Proctor

F. Schenck March 1873

Allen G.
Jones



1150
860
290

guy

40

54

counter 24631

File #. ~~1~~ 3.

Grimes County
N. E. Corner
Filed February 25th 1871.

counter 24630

Plotted in General Land Office
February 25/71 by A. H. Kenna

X



Jm. Bowman
J.

95
976
107

1100
53
947
967
20

counter 24629

23

Stremme's 2 Sketches in N.E
part of Grimes Co,
Plotted in office April 15, 1871,

counter 24628

*Sketch File N: 3
of the North East Part of
Grimes County*



*Plotted in Office
by
C. C. Stremme
April 15/71.*

counter 24634

ED JAC 1/11/71